



# Model: JDI-FST15 15 Gallon Fuel Station

(UN/DOT Approved)  
Operator's Manual



151 Snyder Ave.  
Barberton, OH 44203  
Toll-Free: 800-433-0708  
[www.johndow.com](http://www.johndow.com)  
[customerservice@johndow.com](mailto:customerservice@johndow.com)

12/2018

INSTRUCTIONS PERTAINING TO THE RISK OR INJURY TO PERSONS.

IMPORTANT SAFETY INSTRUCTIONS. SAVE THESE INSTRUCTIONS.



READ THIS MANUAL CAREFULLY BEFORE INSTALLING,  
OPERATING OR SERVICING THIS EQUIPMENT



## DANGER GASOLINE – EXTREMELY FLAMMABLE

- VAPORS CAN EXPLODE
- HARMFUL OR FATAL IF SWALLOWED
- If swallowed, do not induce vomiting. Call physician immediately.
- Keep out of reach of children.
- Avoid prolonged breathing of vapors.
- Do not siphon by mouth.
- Do not store in vehicle or living space.
- Store and use in well-ventilated area.
- Vapors can be ignited by a spark or flame source many feet away.
- Keep away from flame, pilot lights, stoves, heaters, electric motors and other sources of ignition.
- Keep container closed.
- Do not smoke near or while using this product.



## WARNING

- When using this product basic precautions should always be followed. Read all instructions before using this product. Provide close supervision to reduce the risk of injury.
- Ensure that all fittings and connections are tightened and leak free.
- **DO NOT** modify this tank, fittings, valves, or caps.
- Place container in horizontal position on ground when filling.
- Discharge static electricity before fueling by touching a metal surface away from the nozzle.
- Keep nozzle in contact with the container while filling. **DO NOT** use a nozzle lock-open device.
- **DO NOT** get back in vehicle while refueling. Re-entry could cause a static build up.
- Fill slowly to prevent the build up of static charges.
- If fire starts, do not remove nozzle. Back away immediately.
- Closely monitor flow to prevent spills and overfilling.
- Perform the entire closure procedure before using the fuel cart to transport fuel.
- Secure or strap container to trailer or truck bed. **DO NOT** place inside a vehicle trunk or inside passenger compartment.
- **DO NOT** use electronics or mobile phones while using this product.
- Regulations for the transportation of gasoline vary from state to state, even locally. It is the vehicle operator's responsibility to review and comply with all federal, state, and local regulations.
- Review and comply with all building and fire codes concerning the proper storage of fuel. It is the owner's/user's responsibility to comply with all building and fire codes.
- **DO NOT** store in direct sunlight.



## CAUTION

- Use this product for "one type of fuel only" to avoid possible contamination or damage to equipment or motor vehicles.
- Use care when maneuvering to prevent injury or loss of control. Seek assistance to avoid strain or injury when required.

### Capacity and Dimensions:

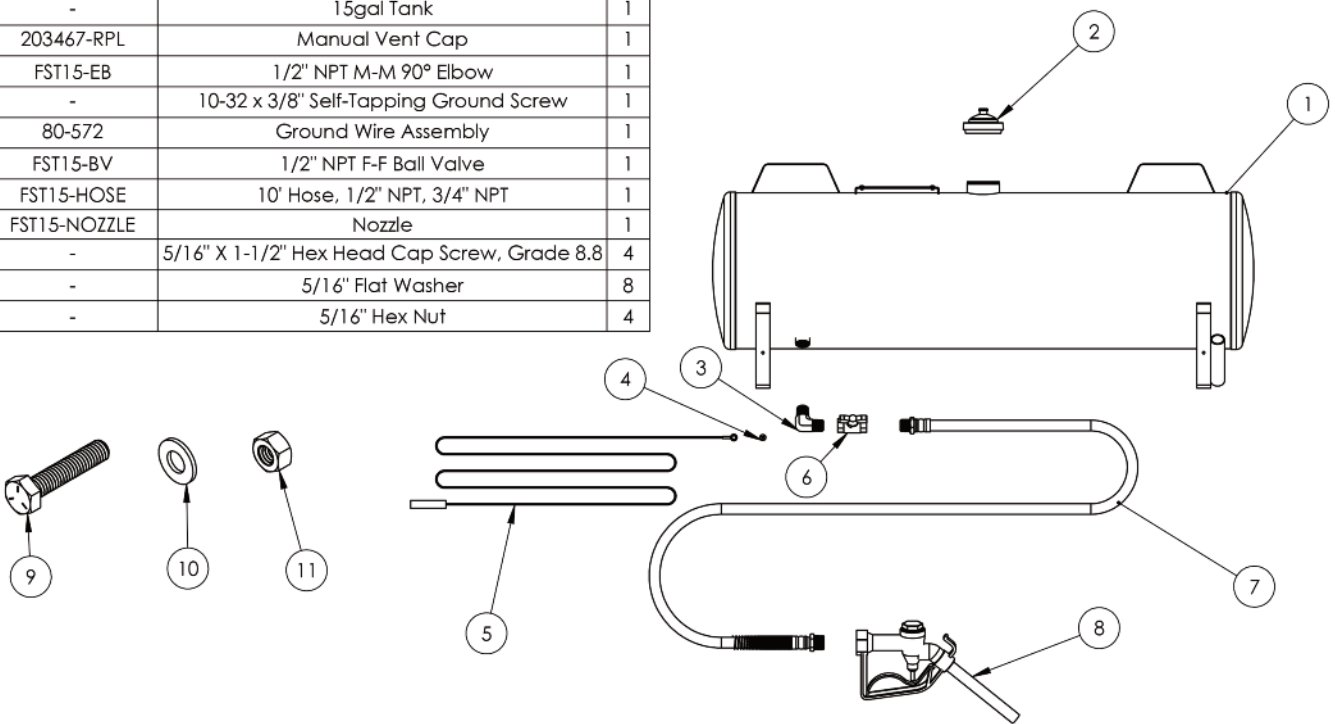
Nominal capacity:	15.0 gal. (57 liters)
Maximum fill capacity:	14.0 gal. (53.2 liters), 93% of actual to allow room for expansion
Tare weight:	29 lb. (13.2 kg)
Gross weight	(14.0 gal./53.2 liters of gasoline): 116 lbs. (52.6 kg)
Dimensions:	38.3" x 11.15" x 15.9" (975 x 285 x 405 mm)
Certification:	UN/DOT approved and marked

## Tools Required:

Flat Head Screwdriver or 5/16" (or 8mm) Nut Driver  
 Adjustable Wrench  
 7/8" and 1-1/16" Wrench  
 PTFE Tape (included)

## Contents:

ITEM NO.	REPLACEMENT PART NO.	DESCRIPTION	QTY
1	-	15gal Tank	1
2	203467-RPL	Manual Vent Cap	1
3	FST15-EB	1/2" NPT M-M 90° Elbow	1
4	-	10-32 x 3/8" Self-Tapping Ground Screw	1
5	80-572	Ground Wire Assembly	1
6	FST15-BV	1/2" NPT F-F Ball Valve	1
7	FST15-HOSE	10' Hose, 1/2" NPT, 3/4" NPT	1
8	FST15-NOZZLE	Nozzle	1
9	-	5/16" X 1-1/2" Hex Head Cap Screw, Grade 8.8	4
10	-	5/16" Flat Washer	8
11	-	5/16" Hex Nut	4



## Intended Use:

This product is a UN/DOT approved packaging for the transport of gasoline by motor vehicle and to gravity dispense fuel into gasoline powered portable equipment, vehicle fuel tanks, or other approved containers. **NOT** for use for rail, air, or marine transportation.

## Assembly Instructions:

1. Remove ground screw from tank leg using screwdriver or nut driver. Assemble green ground wire to tank by placing screw thru the connector and reattaching to tank leg. Make certain connection is securely tightened.
2. Assemble cap onto fill neck. Make sure cap is secure by turning completely to stop position.
3. Wrap 1/2" fitting of hose with PTFE tape. Thread onto ball valve. Tighten with wrenches.
4. Wrap 3/4" fittings on hose with PTFE tape. Thread nozzle onto hose end. Tighten with wrenches.

## To Dispense from Container:

1. Attach the ground wire clip end to frame of the equipment receiving the fuel to bond the fuel station to the equipment being filled. Bonding will place both the fuel station and receiving equipment at the same static charge potential.
2. Slowly crack the fill cap to vent any internal pressure.
3. Open the ball valve.
4. Place the dispensing nozzle into the receiving fuel tank that is being filled. The nozzle must remain inside the receiving tank during the fill process.
5. Fuel is gravity dispensed through the nozzle. Remove the locking clip from the nozzle. Squeeze nozzle handle to begin flow, release to stop.
6. Monitor flow and liquid levels to prevent spills.
7. When finished raise nozzle and hose above tank. Open nozzle to allow fuel to drain from the hose to the tank. Release and close nozzle, close fill cap. Place wire clip through nozzle handle to prevent unintentional opening.

## To Close for Transportation:

1. Raise nozzle and hose above tank. Crack fill cap vent. Open nozzle to allow fuel to drain from the hose to the tank. Release and close nozzle, close fill cap vent.
2. Verify that all closures are fully closed. The top cap to be turned clockwise 90 degrees until secure. The ball valve handle to be fully closed with the handle 90 degrees to the valve body.
3. Place wire clip through nozzle handle to prevent unintentional opening.

## To Mount or Secure Before Transportation:

1. Secure the container onto a trailer or truck bed in the horizontal position only. **DO NOT** place inside a vehicle trunk or inside the passenger compartment.
2. The container is designed to be permanently mounted to a trailer or bed of vehicle by bolting the legs to the frame using the included (4) 5/16" x 1-1/2" bolts, (8) 5/16" flat washers and (4) 5/16" hex nuts.
3. The container may be temporarily secured with a ratchet style polyester cargo tie down straps having a 300 lb. minimum working load (WL). **DO NOT** use friction of cam lock style straps.
4. Secure by routing the cargo straps over the tank through the top brackets. **DO NOT** attach cargo tie down straps to the ball valve or route the straps directly against the fill cap.
5. It is the vehicle operator's responsibility to comply with all federal, state, and local regulations for the transportation of fuel including the use of placards where required.

## Storage:

1. It is the user's responsibility to review and comply with all local and state building and fire codes regarding allowed quantity of fuel that may be stored and the approved storage locations.
2. Keep out of reach of children.
3. Store in well-ventilated area.
4. Keep away from flame, pilot lights, stoves, heaters, electric motors and other sources of ignition.
5. **DO NOT** store inside a residence, living space or basement.
6. **DO NOT** store in an attached garage that is connected to residence or dwelling.
7. **DO NOT** store in vehicle passenger compartment or vehicle trunk.
8. **DO NOT** store in direct sunlight.