

PREP



- 1** Thoroughly clean the surface where InstaTrim will be installed. Remove old caulk, grout and loose debris.
- 2** Wipe down the area with a damp cloth, using isopropyl alcohol or acetone to help ensure adhesion. **BE SURE TO FOLLOW INSTRUCTIONS ON REVERSE IF YOU ARE REMOVING SILICONE FROM THE SURFACE.**
- 3** Let the surface dry completely. Surface must be clean and dry before installing.

INSTALLATION



Peel back the liner to expose adhesive.

CAUTION: Do not pull or stretch InstaTrim while you work as this may cause the ends to peel back.



Gently press InstaTrim into the corner every 4"-6" to secure positioning.

NOTE: Once positioned, firmly press into place along the entire strip.



Trim the finished end of the strip using a scissors or razor blade.

NOTE: Splicing instructions on reverse, videos on website also.

More instructions on reverse. How-to videos and troubleshooting help can also be found on our website: www.instatrim.com

IMPORTANT TIPS

- Remove all traces of old silicone caulk before applying InstaTrim. Please follow instructions on reverse side.
- Use InstaTrim at room temperature.
- Avoid stretching InstaTrim as you work to avoid the ends from peeling back.
- Adding an extra 1/8" before cutting will ensure a tight fit.
- A small dab of permanent glue may help to adhere spliced ends where adhesive has been cut away.

WE'RE HERE TO HELP

Please contact us directly, **info@instatrim.com** if you have questions or would like to share photos of your project with us.

Manufactured, sold and distributed by CornerFlex, Inc., Scandia, MN 55073-USA
© 2020, CornerFlex, Inc. All Rights Reserved. InstaTrim® is a registered trademark of CornerFlex, Inc.
U.S. Patent Nos: 9,765,960 - 9,783,999 - 10,054,304 - 10,550,584



INSTATRIM.COM



How-To Videos

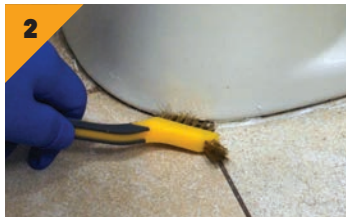


REMOVE OLD SILICONE

*** InstaTrim WILL NOT adhere to leftover silicone residue. ***



Using a sharp blade or caulk removal tool, cut caulk away from the surface and peel away as much old caulk as you can.



Using acetone or silicone remover with a stiff brush or scrubby sponge, scrub all remaining silicone oils and residue from surface. **Do not use mineral spirits.**



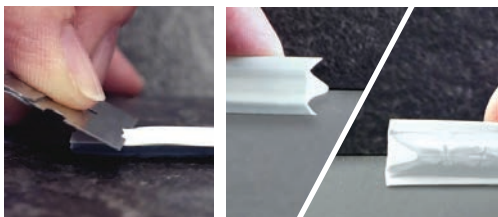
Wipe surface with a soft cloth and acetone or silicone remover again to remove any remaining oils and residue. Let dry completely.

NOTE: Always use ventilation in enclosed areas with any solvent cleaning solution.

SPLICING TWO ENDS



Cut the finish end of the 1st strip at a 45° angle.



Cut the beginning end of the 2nd strip at a 45° angle in the opposite direction so the ends will overlap and create a smooth transition between the strips.



Optional: Apply a small dab of permanent glue where the adhesive has been cut away.

SPLICING CORNERS



One end of the strip will butt against the adjacent wall.



Cut the beginning end of the next strip to make a 45° compound angle.



Overlap the strip that is in place and continue installation.



Optional: Apply a small dab of permanent glue where the adhesive has been cut away.

How-to Videos and Other Helpful Tips Online at www.instatrim.com