

**COSTWAY®**



**USER'S MANUAL**  
**CHILDREN'S ELECTRONIC MOTORCYCLE**  
**TY327786**

THIS INSTRUCTION BOOKLET CONTAINS **IMPORTANT** SAFETY INFORMATION. PLEASE READ AND KEEP FOR FUTURE REFERENCE.

**Please give us a chance to make it right and do better!**

Contact our friendly customer service department for help first.

Replacements for missing or damaged parts will be shipped ASAP!

**Follow Costway**

Visit us: [www.costway.com](http://www.costway.com)



# Contact Us!

## Do NOT return this item.

Contact our friendly customer service department for help first.



# Before You Start

Please read all instructions carefully and keep it for future reference.

### Warnings:

**Attention!** Use it with protective equipment.

**Attention!** Not use it in the traffic.

**Attention!** The product is not suitable for the children under 3 years.

### General Warnings:

- ⚠ The product must be installed and used under the supervision of an adult.
- ⚠ Read through each step carefully and follow the proper order.
- ⚠ Remove all packaging, separate and count all parts and hardware.
- ⚠ Please ensure that all parts are correctly installed, incorrect installation can lead to a danger.
- ⚠ We recommend that, where possible, all items are assembled near to the area in which they will be placed in use, to avoid moving the product unnecessarily once assembled.
- ⚠ Ensure a secure surface during construction, and place the product always on a flat, steady and stable surface.
- ⚠ Please use the product carefully, as the product requires great skill, avoid accidents by the user or others, by fall or collision.
- ⚠ Please wear suitable protective equipment during use, e.g. protective helmet, gloves, knee pads, elbow pads etc.



## WARNING

Must be assembled by an adult.

- Suitable for 3+ Years
- Maximum user weight: 66 LBS

## About Your New Vehicle

On the purchase of your new Ride-On.

This ride-on car will provide your child with many miles of riding of enjoyment. To help assure you and your rider a safe ride we ask you to please read this manual carefully, and keep it for future reference.

Follow the recommendations in this manual, they are designed to improve the safety and operation of your ride-on car and its rider.

## Specification

Battery	12V7AH X1
Charger	12V900mA
input	Depend on local voltage
Motor	2 * 550-RPM12000

Suitable age:	3+ Years
Charge time:	8~12 hours
Load capacity:	Under 66 lbs.
Size of car:	45.5" x 19.5" x 30"
Speed:	3-7 km/h

## BATTERY INFORMATION

- Non-rechargeable batteries are not to be recharged.
- Rechargeable batteries are to be removed from the toy before being charged.
- Rechargeable batteries are only to be charged under adult supervision.
- Different types of batteries or new and used batteries are not to be mixed.
- Batteries are to be inserted with the correct polarity.
- Exhausted batteries are to be removed from the toy.
- The supply terminals are not to be short-circuited.

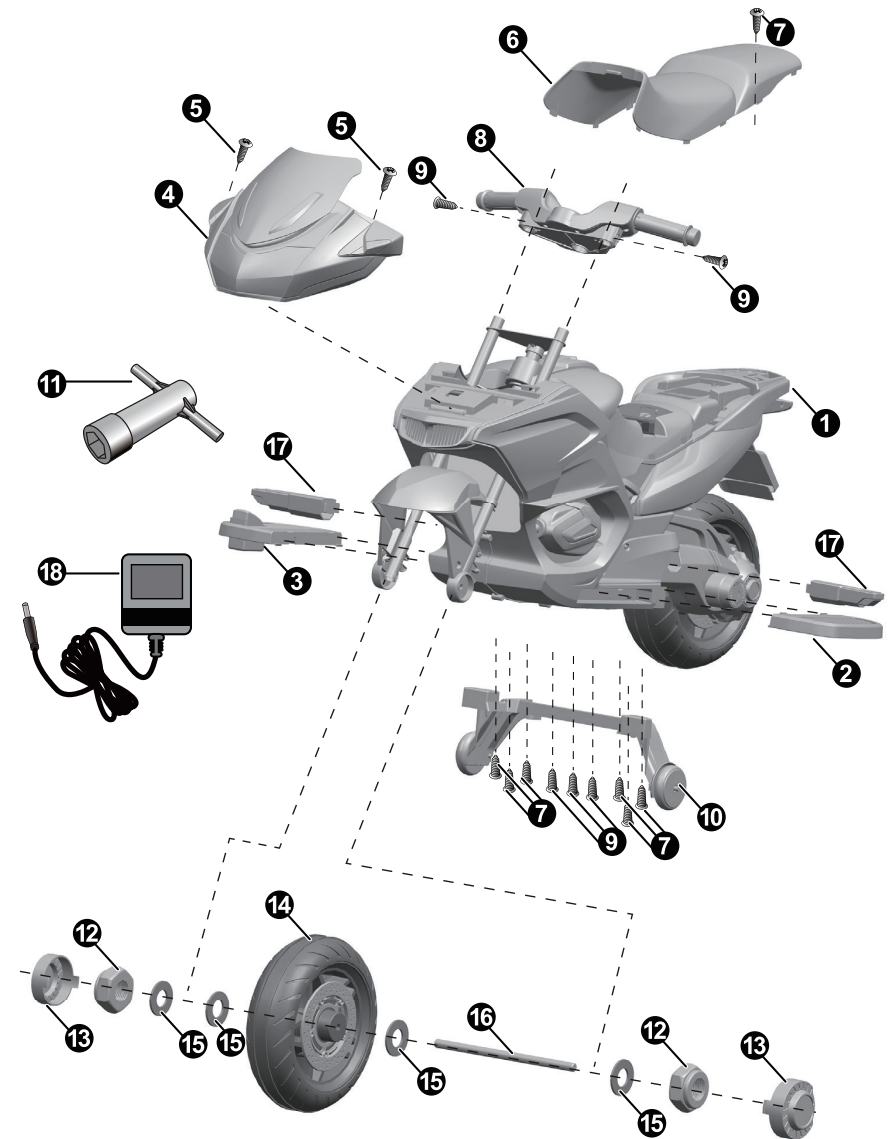
## Parts List

NO.	PART NAME1	Q'TY (PCS)
1	Vehicle body	1
2	Front foot pedal L	1
3	Front foot pedal R	1
4	Face guard	1
5	Ø4x16 screw	2
6	Seat	1
7	Ø4x12 screw	7
8	Handle bar	1
9	Ø4x30 screw	5
10	Side wheel	1
11	Spanner	2
12	Lock nut	2
13	Hub cap	2
14	Front wheel	1
15	Ø12 washer	4
16	Front axle	1
17	Rear foot pedal	2
18	Charger	1

• Assembly tools required (not included):



## Parts Diagram



## Safety



### PREVENT INJURIES AND DEATHS:

- NEVER LEAVE CHILD UNATTENDED. ADULT DIRECT SUPERVISION IS REQUIRED. Always keep child in view when child is in vehicle.
- This toy should be used with caution since skill is required to avoid falls or collisions causing injury to the user or third parties.
- Protective equipment should be worn.
- Never use in roadways, near cars, or on near steep inclines or steps, swimming pools or other bodies of water.
- Always wear shoes, always sit on the seat.
- Not to be used in traffic.
- This toy is unsuitable for children under 36 months due to its maximum speed; Maximum user weight is 66 lbs.
- This toy has no brake.

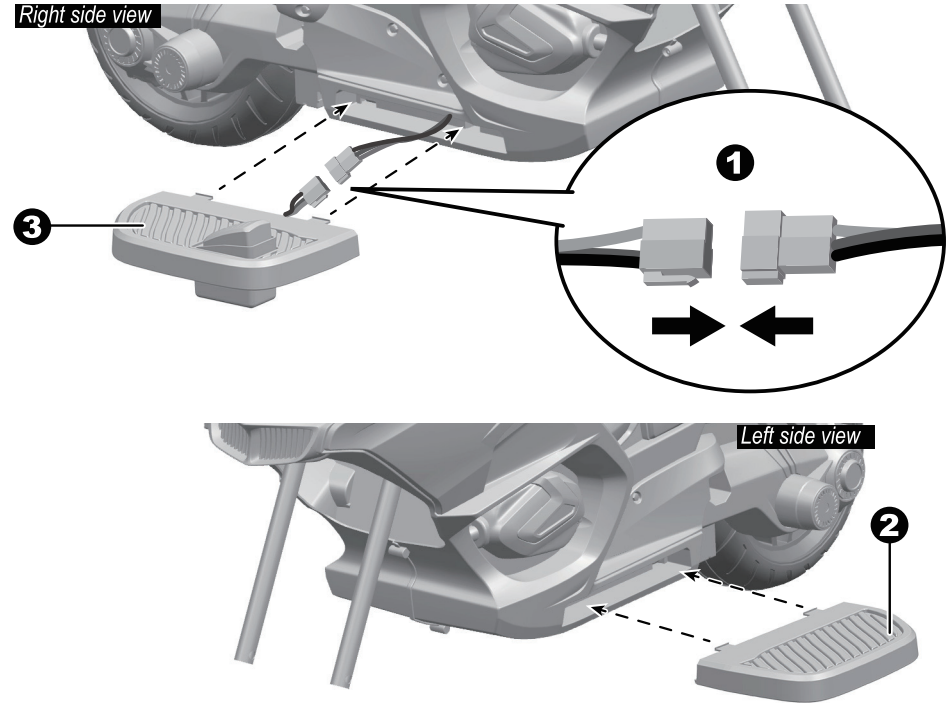
### **WARNING:**

- CHOKING HAZARD! Not suitable for children under 36 months.
- Must be assembled by an adult.

## Rules for Safe Riding

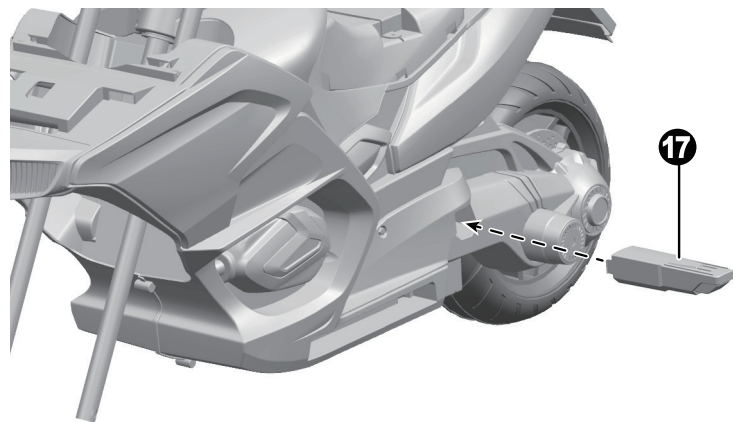
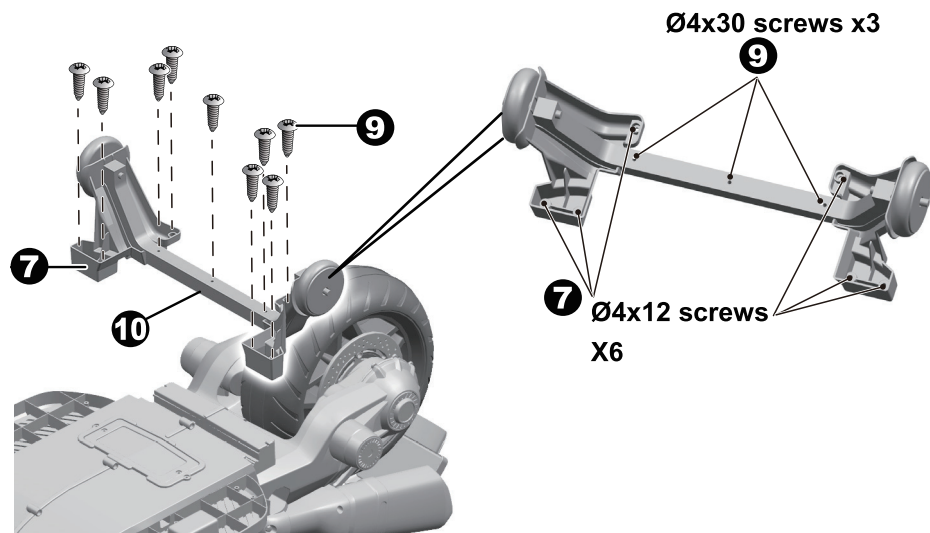
- Keep Children within Safe Riding Areas:
  - Never use in roadway, near motor vehicles, on lawn space, on or near steep inclines or steps, swimming pools or other bodies of water;
- Use the toy only on flat surfaces. Such as inside your house, garden or playground.
- Never use in the dark. A child could encounter unexpected obstacles and have an accident. Operate the vehicle only in the daytime or a well-lit area.
- It is prohibited to change the circuit or add other electric parts
- Inspect wires and connections of the vehicle periodically.
- Do not let any child touch the wheels or be near them when the car is moving .

## Attach the Foot pedals



1. Insert the connector on the foot pedal R into the connector on the vehicle body.
2. Insert the tabs on the foot pedal R into the groove on the Right side of the vehicle body.
3. Insert the tabs on the foot pedal L into the groove on the Left side of the vehicle body.

## Attach the Side Wheel, Rear Foot Pedals & Front Fender



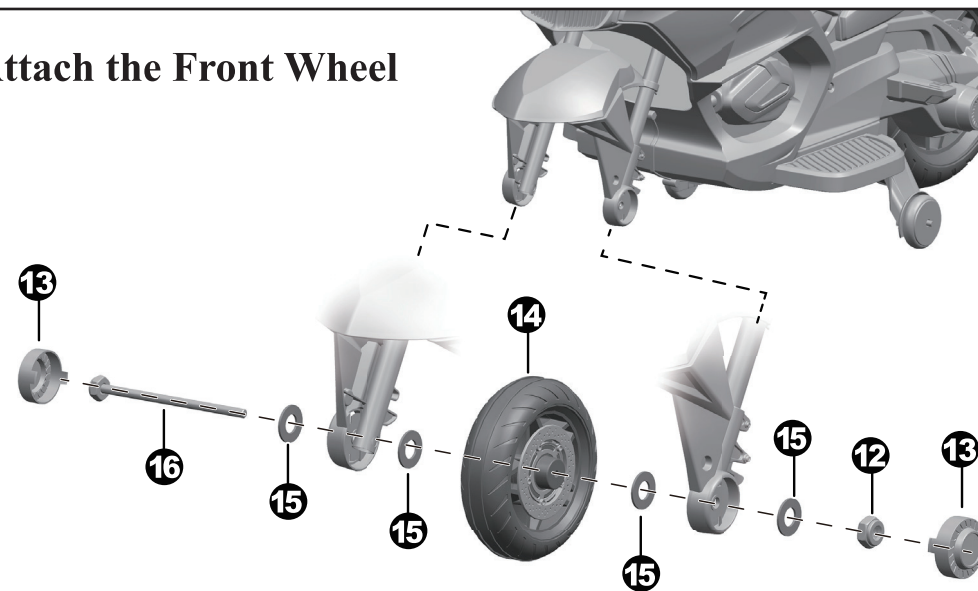
Turn the vehicle body upside down.

1. Fit the side wheel to vehicle body.
2. Insert Ø4x12 screws \*6, Ø4x30 screws\*3 and tighten with a screwdriver.

Turn the vehicle body upright.

3. Fit the rear foot pedal into the hole on the vehicle body. Push it until you hear it “click” into place. Repeat for the other rear foot pedal.

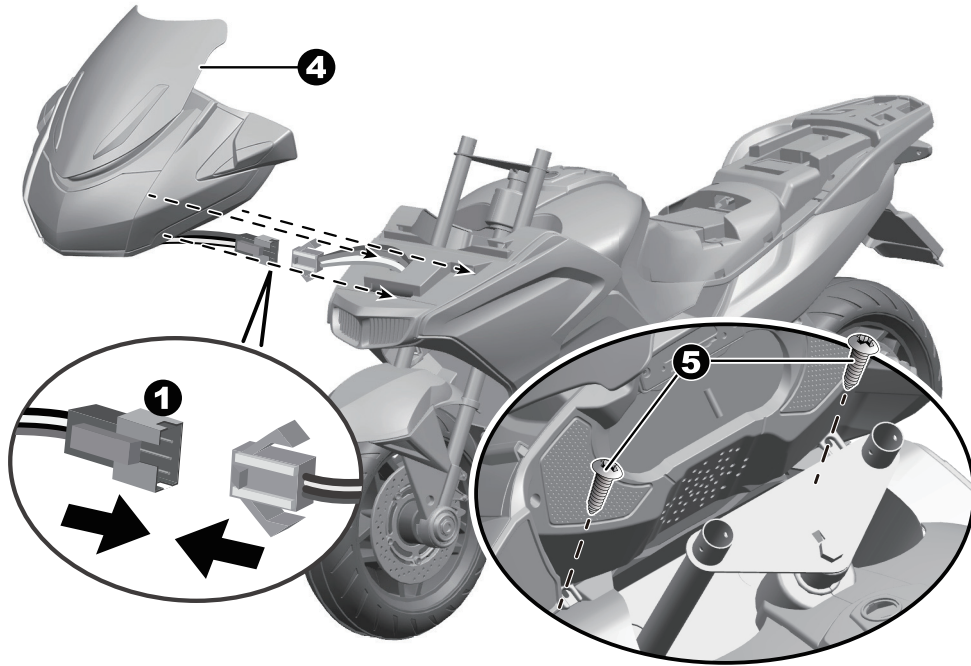
## Attach the Front Wheel



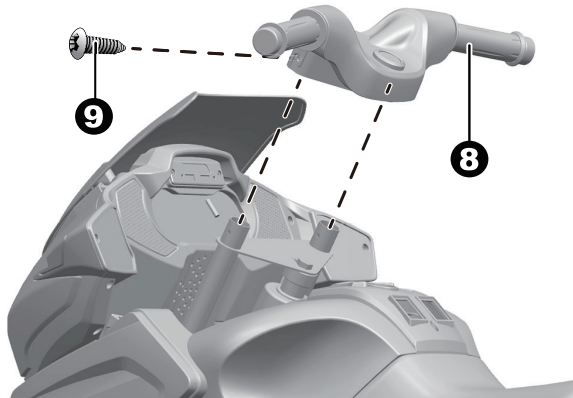
1. Remove a lock from the front axle with two spanners.
2. Slide a Ø12 washer onto the front axle.
3. Slide the front axle through the hole on the right side of the front fender, and out the hole on the right side of the handle bar fork.
4. Slide a Ø12 washer onto the front axle.
5. Slide the front wheel onto the front axle.
6. Slide a Ø12 washer onto the front axle.
7. Continue push the front axle till it passes through the hole on the left side of the handle bar fork, and out through the hole on the right side of the front fender.
8. Slide a Ø12 washer onto the front axle.
9. Tighten a locknut onto the end of the front axle. Hint: An extra spanner has been provided to hold the lock nut on the other side of the front axle while tightening the lock nut on the other side.
10. Fit the hub caps to the both sides of the front fender.



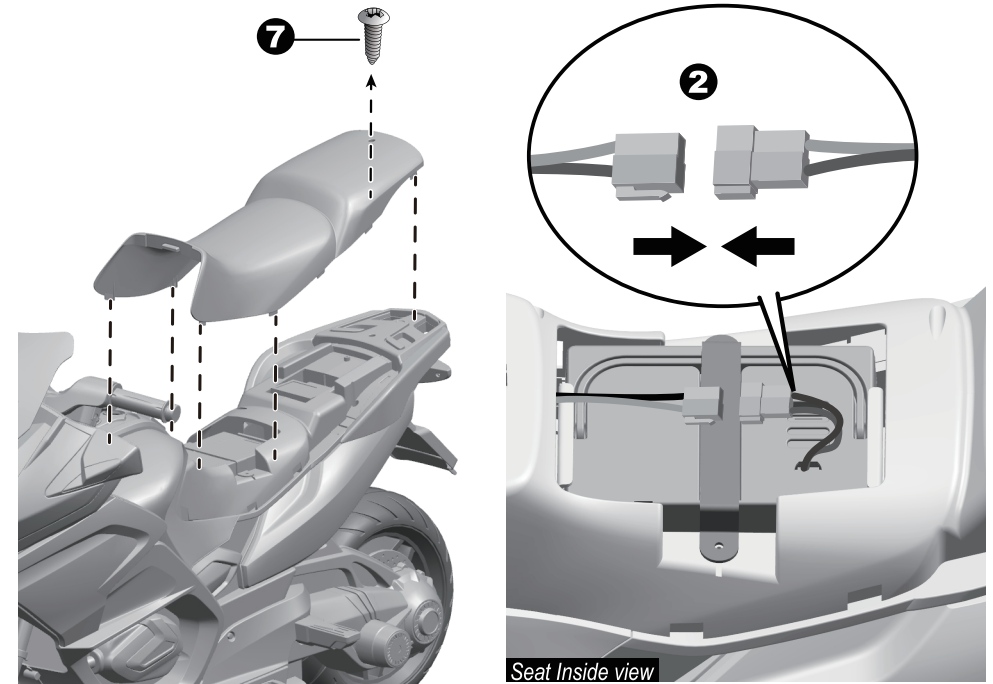
## Attach the Face Guard & Handle bar



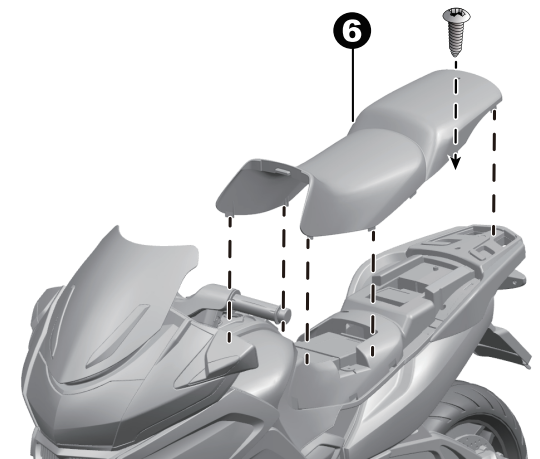
1. Plug the connector on the face guard into the connector on the vehicle body.
2. Fit the tabs on the face guard into the grooves on the vehicle body, push it until it into place.
3. Insert two Ø4x16 screws and tighten.
4. Fit the handle bar onto front fork,
5. Insert two Ø4x30 screws and tighten with a screwdriver.



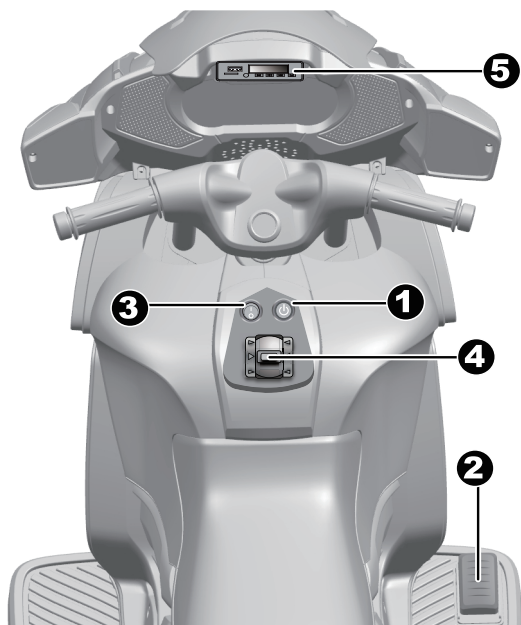
## Connect the Power Supply



1. Loosen the screw on the top of the seat with a screwdriver, and remove it.
2. Plug the red connector on the vehicle body into the red connector from the battery.
3. Replace the seat.

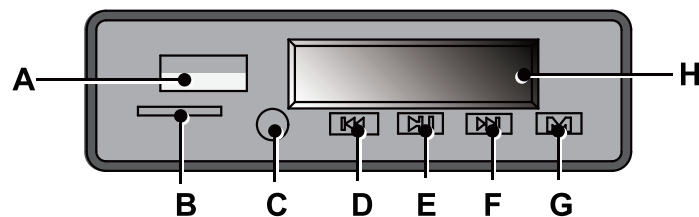


## Use your New Ride-on



1. Power button:  
Turn the power on and off.
  2. Foot pedal:
    - To move the vehicle, press the pedal down.
    - To brake or slow down, release pressure from the pedal.
  3. Lights switch:  
Turn the front lights on and off.
  4. Forward/Reverse lever:
    - To move the vehicle forward in high speed, shift the lever to top position.
    - To move the vehicle forward in normal speed, shift the lever to middle position
    - To move the vehicle backward in low speed, shift the lever to bottom position
- HINT: The vehicle is designed to operate in low speed only in reverse.

## 5. Mp3 player:



- A. USB slot
- B. TF card slot (Read mp3 format only)
- C. AUX input
- D. Previous / Increase volume
- E. Play / Pause
- F. Next / decrease volume
- G. Change the audio input (If you insert two or more audio input devices). It also controls the bluetooth (if equipped) and FM functions (if equipped).
- H. Display screen: It displays the power level of the battery when the vehicle stops. When the numerical value is less than 12, recharge the battery please.

## Charging



### WARNING:

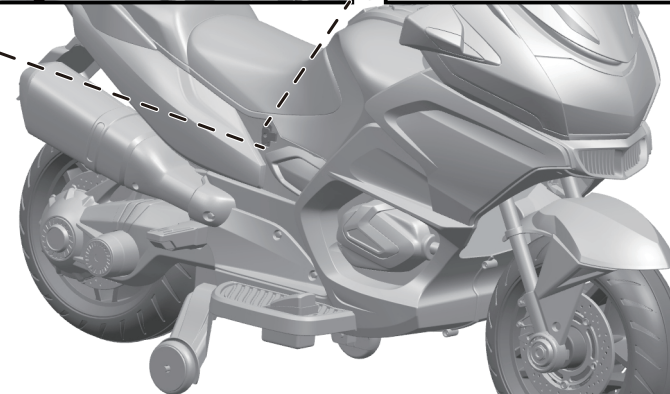
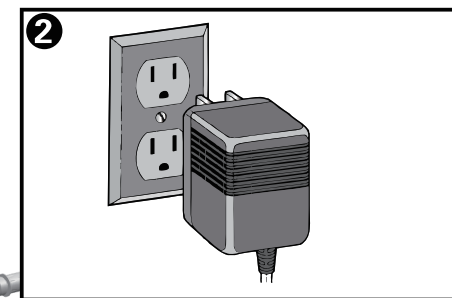
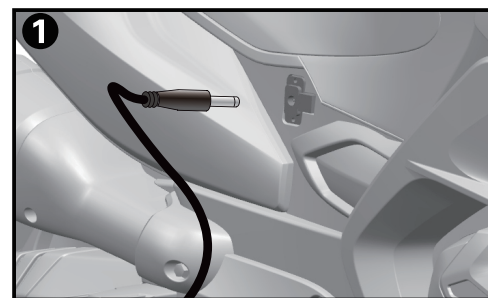
ONLY AN ADULT CAN CHARGE  
AND RECHARGE THE BATTERY!



### WARNING:

This product with Charging Protection: when charging, all functions will be cut off! Only an adult can charge and recharge the battery!

- The POWER SWITCH must be turned in OFF position when charging.
- Before the first use, you should charge the battery for 4-6 hours. Do not recharge the battery for more than 10 hours to avoid overheating the charger.
- When the vehicle begins to run slowly, recharge the battery.



1. Plug the charger port into the input socket. (above the right foot pedal)
2. Plug the charger plug into a wall outlet. The battery will begin charging.

## Troubleshooting Guide

Problem	Possible Cause	Solution
Vehicle does not run	Battery low on power	Recharge battery.
	Thermal fuse has tripped	Reset fuse, see <Fuse>
	Battery connector or wires are loose	Check that the battery connectors are firmly plugged into each other. If wires are loose around the motor contact your distributor please.
	Battery is dead	Replace batterycontact your distributor please.
	Electrical system is damaged	Contact your distributor please.
	Motor is damaged	Contact your distributor please.
Vehicle does not run very long	Battery is under charged	Check that the battery connectors are firmly plugged into each other when recharging
	Battery is old	Replace batterycontact your distributor please.
Vehicle runs sluggishly	Battery low on power	Recharge batterycontact your distributor please.
	Battery is old	Replace batterycontact your distributor please.
	Vehicle is overload	Reduce weight on vehicle.
	Vehicle is being used in harsh conditions	Avoid using vehicle in harsh conditions ,see <Safety>.
Vehicle needs a push to go forward	Poor contact of wires or Connectors	Check that the battery connectors are firmly plugged into each other. If wires are loose around the motor, contact your distributor please.
	“Dead Spot” on motor	A dead spot means the electric power is not being delivered to the terminal connection and the vehicle needs repair.Contact your distributor please.
Difficult shifting from forward to reverse or vice-versa	Attempting to shift while the vehicle is motion	Completely stop the vehicle and shift, see <Use Your New Ride-on>
Loud grinding or clicking noises coming from motor or gear box	Motor or gears are damaged	Contact your distributor please.
Battery will not recharge	Battery connector or adapter connector is loose	Check that the battery connectors are firmly plugged into each other.
	Charger not plugged in	Check that the battery charger is plugged into a working wall outlet.
	Charger is not working	Contact your distributor please.
Charger feels warm when recharging	This is normal and not a cause for concern	

Completely read through this manual and the troubleshooting guide table before calling. If you still need help resolving the problem Contact your distributor please.

## Maintaining

- It is parents' responsibility to check main parts of the toy before using, must regularly examine for potential hazard, such as the battery, charge,cable or cord, plug, screws are fastening enclosure of other parts and that in the event of such damage, the toy must not be used until that damage had been properly removed.
- Make sure the plastic parts of the vehicle are not cracked or broken.
- Occasionally use a lightweight oil to lubricate moving parts such as wheels.
- Park the vehicle indoors or cover it with a tarp to protect it from wet weather.
- Keep the vehicle away from sources of heat, such as stoves and heaters. Plastic parts may melt.
- Recharge the battery after each use. Only an adult can handle the battery. Recharge the battery at least once a month when the vehicle is not being used.
- Do not wash the vehicle with a hose. Do not wash the vehicle with soap and water. Do not drive the vehicle in rainy or snowy weather. Water will damage the motor, electric system and battery.
- Clean the vehicle with a soft, dry cloth. To restore shine to plastic parts, use a non-wax furniture polish. Do not use car wax. Do not use abrasive cleaners.
- Do not drive the vehicle in loose dirt, sand or fine gravel which could damage the moving parts, motors or the electric system.
- When not using, all the electrical source should be turn off. Turned off the power switch and disconnect the battery connection.

## Fuse

The battery features a thermal fuse with a rest fuse that will automatically trip and cut all power to the vehicle if the motor, electric system or battery is overloaded. The fuse will reset and power will be restored after the unit is turned OFF for 20 seconds and then turned ON again. If the thermal fuse trips repeatedly during normal use, the vehicle may need repair. Contact your distributor please.

To avoid losing power, follow these guidelines:

- Do not overload the vehicle.
- Do not tow anything behind the vehicle.
- Do not drive up steep slopes.
- Do not drive into fixed objects, which may cause the wheels to spin, causing the motor to overheat.
- Do not drive in very hot weather, components may overheat.
- Do not allow water or other liquids to come in contact with the battery or other electric components.
- Do not tamper with the electric system. Doing so may create a short, causing the fuse to trip.



## Disposal Of Battery



- Your sealed lead-acid battery must be recycled or disposed of in an environmentally sound manner.
- Do not dispose of your lead-acid battery in a fire. The battery may explode or leak.
- Do not dispose of a lead-acid battery in your regular, household trash. The incineration, land filling or mixing of sealed lead-acid batteries with household trash is prohibited by law.

Our products are suitable for ASTM F963; GB6675; EN71 and EN62115 standard.

## Welcome to visit our website and purchase our quality products!

Your suggestions and comments for COSTWAY are really important to us!

We sincerely solicit you to go back to our shop and leave a good rating in just a simple click. It would be quite encouraging if you could kindly do so like below:

★★★★★ Great products so far

February 24, 2019

Great products so far. Fast delivery, easy setup, and working without any issues.

**With your inspiring rating, COSTWAY will be more consistent to offer you EASY SHOPPING EXPERIENCE, GOOD PRODUCTS and EFFICIENT SERVICE!**

**US office: Fontana, California**

**UK office: Ipswich**



- \* Reward Points
- \* Exclusive Customer Service
- \* Personalized Recommendations
- \* Permanent Shopping Cart
- \* Order History

## 5 Star Rating



We would like to extend our heartfelt thanks to all of our customers for taking time to assemble this product and giving us valuable feedbacks.

THANK  
YOU  
😊