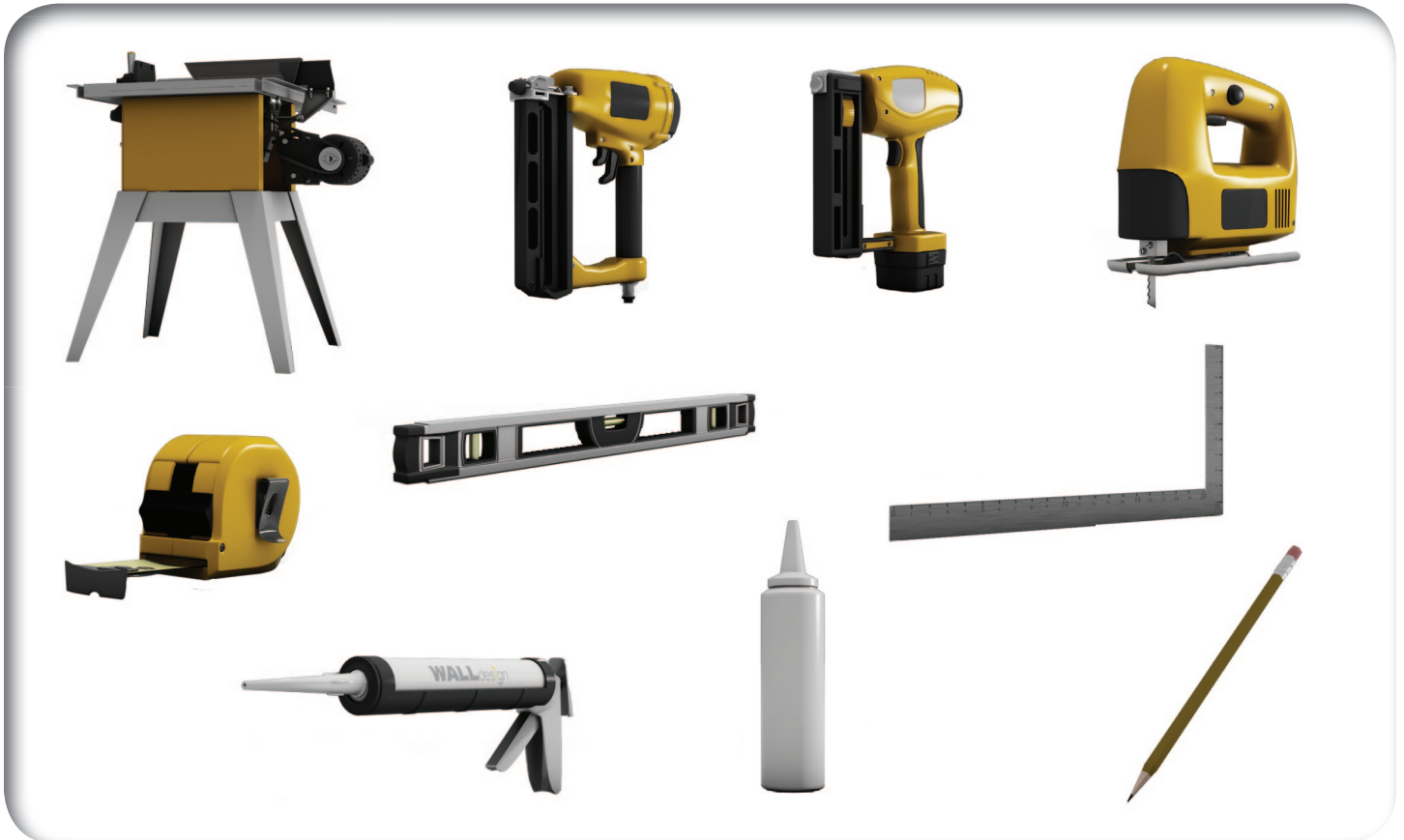


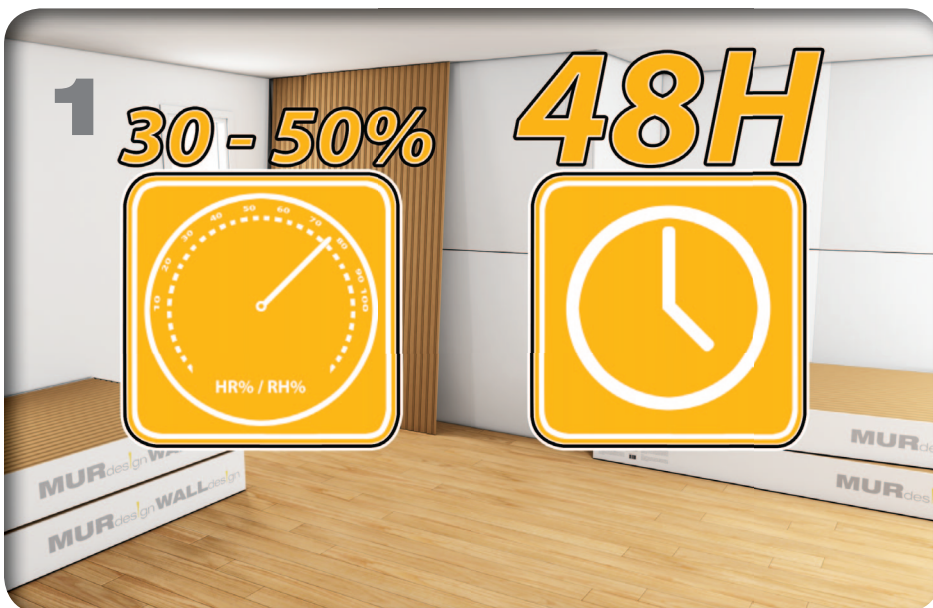
WALLdesign

Installing your WallDesign Panels

The following are illustrations of all the tools and accessories needed to successfully install your WallDesign panels.



Installation technique

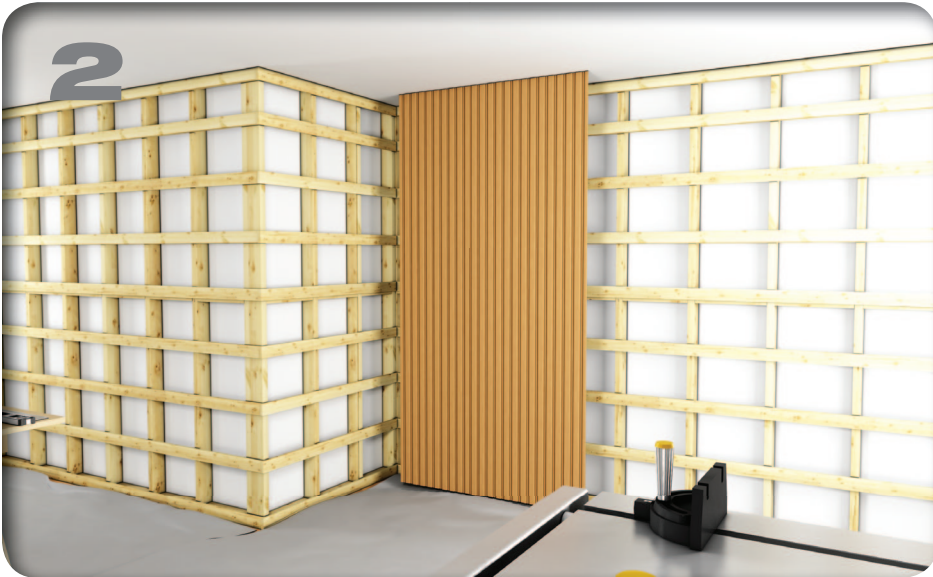


A few simple precautions will guarantee a problem-free installation of your long-lasting panel.

Take into account the humidity level of the room in which you will be installing the panels. In the case of wood-based products, the humidity level has an impact on the wood's expansion and contraction.

The room's relative humidity must not be less than 30% or higher than 50%.

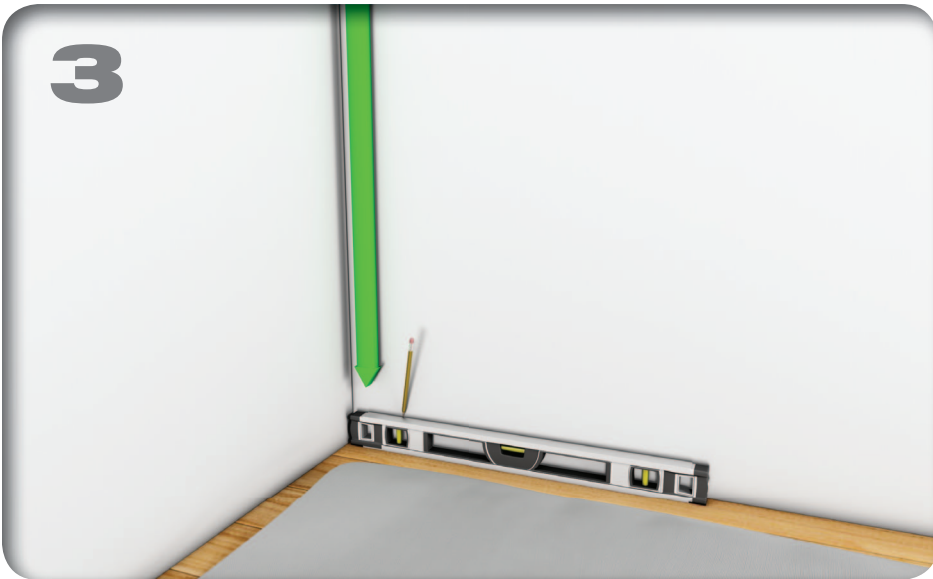
Above all, store your WallDesign panels for a period of 48 to 72 hours in the room where you plan to install them: it is essential that they acclimatize to the room temperature and humidity. Lay the panels flat on their 2.438-m (8-ft) lengths against the wall to allow for adequate ambient air flow between the panels.



Even the simplest installations require some preparation.

Your walls must be as level as possible.

They also need to be clean, dry and firm. This preparation is crucial to obtaining optimal results. The panels can be directly installed on studs, but we strongly recommend adding furring strips horizontally, which will enhance the joints' quality and provide increased solidity. For below-grade installations or exterior walls, use a 4-mil vapour barrier underneath each panel.



A strong start will guarantee successful results.

Always work with a level.

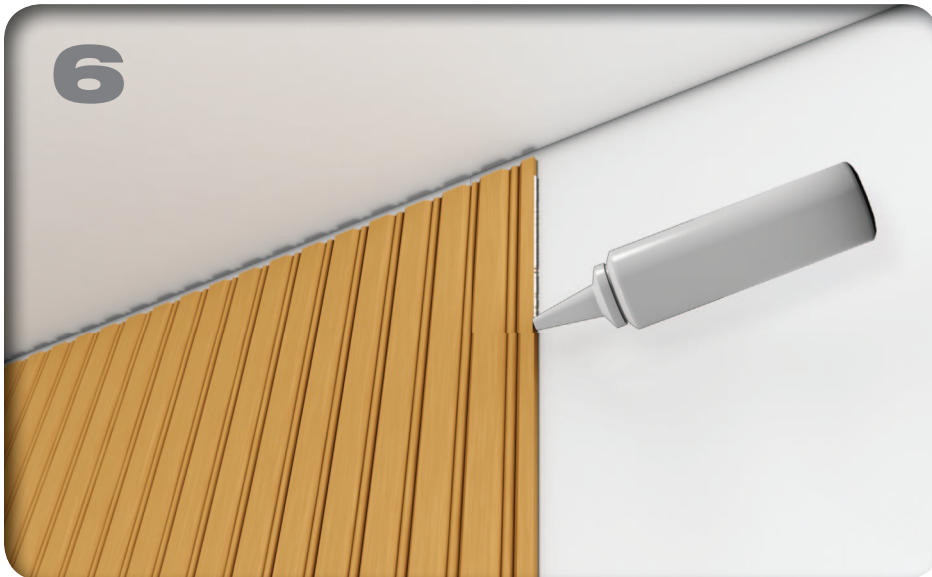
At the base of the wall, draw a reference line using your level. This will enable you to make sure that your panels are straight, even if your walls are not square. Leave a 0.476-cm (3/16-in) gap against corners, windows and doors, and at the top and bottom of each panel.



The panels must be securely fastened.

Before securing the panels, dry-fit them first to make sure they fit properly.

Use a construction or panel adhesive on the back of each panel. A 0.635-cm (1/4-in) adhesive bead will be enough, as long as you apply it all around to the back-side perimeter and forming a repetitive “S” pattern to the rest of the back side for a drywall application. For a direct-to-stud/furring strip application, apply the same 0.635-cm (1/4-in) adhesive bead to each stud or furring strip. **Finish securing each panel using a brad nailer.** Make sure to do the nailing in the grooves so that the nails are less visible; this will provide a smoother finish.



In construction, joints are always somewhat touchy areas.

Reinforce each joint with this helpful hint.

Apply a wood glue-type adhesive to the joint to prevent the panels from separating after their installation. Afterwards, simply remove the excess glue according to the manufacturer's instructions.

7 Cutting

All WallDesign panels are made from HDF, the same component that goes into laminate flooring. To cut a panel, use a laminate flooring blade on a table saw with the finish side up. If you want to use another type of power saw such as a portable circular saw or an outlet, measure and mark down the perimeter to be cut; drill a hole into each corner of the perimeter, and use a jigsaw with a fine toothed blade to cut the outlet.

8 Maintenance

Wash the wall panels using a clean cloth and mild soap. Avoid using a stronger soap, as it may alter the paint finish.

Miscellaneous

You can complete your decor with trim and chair rails.

Miter cutting can be done on a tail cutter for a clean finish on the outside or inside corners.

If you want to re-paint your panels, you will first need to scuff the surface lightly to make sure the new paint adheres well to the panels.

For a ceiling application, leave a 0.635-cm (1/4-in) gap all around the perimeter. Use a strong, high-quality construction adhesive and drive more nails than in a wall application.

You're off to a good start.

Continue installing your panels.

Different finishing options are available. The panels can be installed on a full wall or you can leave a space for mouldings. The inner and outer corners can be simply glued one over the other or you can choose to install them at a 45 degree angle, which provides a more refined cachet to your final results.

For panels at the base of your walls, you can easily coordinate them with your wall panels and install a chair rail to create a dramatic effect to your decor.

**Now, sit back and admire your work... and, especially, enjoy !
WallDesign is a plus, not only for your walls, but for your quality of life !**

walldesign.ca