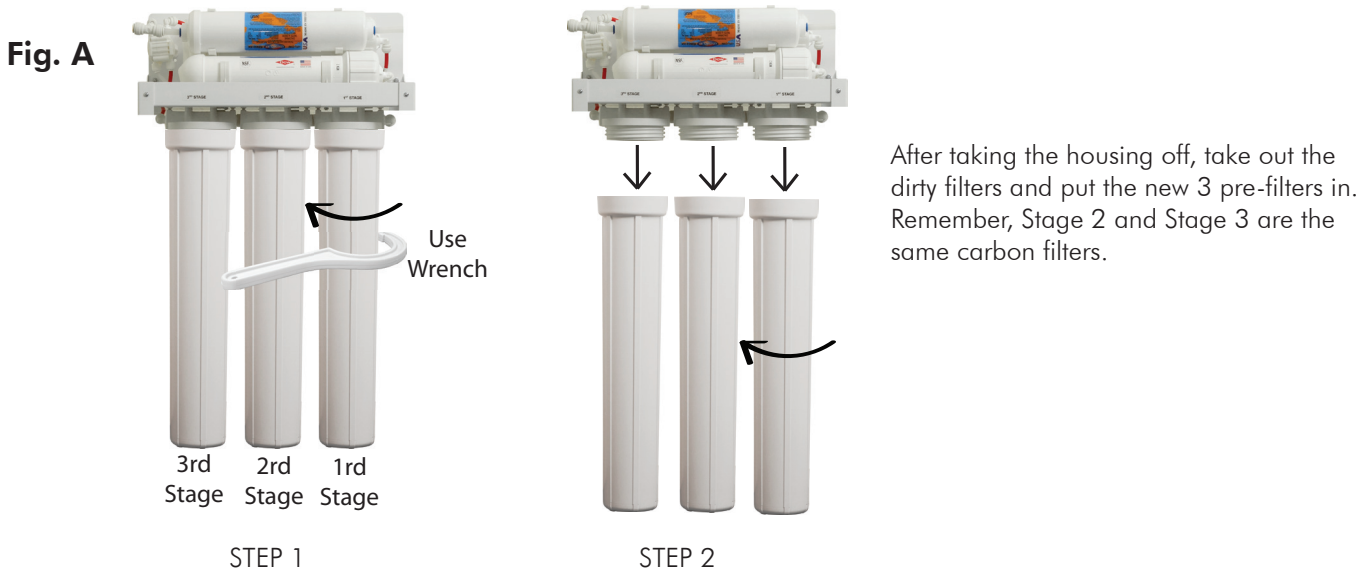


APEC R.O. Lite Commercial System Filter Change Instruction

How To Replace Stages 1, 2, 3 Pre-Filters: (FILTER-SET-LITE)

- 1) **Turn OFF** cold water supply to RO system. Turn OFF tank's ball-valve. Lift up RO faucet lever briefly to relief the built-up pressure inside the RO system. This will make opening the housings easier.
- 2) **Open housing:** Have the RO standing upright. Slip the plastic wrench onto the #1 housing. Looking down from a top view, you should open the housing turning clockwise. If necessary, lay the RO down on the floor to get a better leverage. If the housing is too tight, use a hammer and tap on the wrench handle to help turn the wrench.
- 3) Discard 3 used filters, wash housings with mild soap, rinse off. Put 3 new filters into their respective housing: sediment filter in stage-1, carbon block filter in stages 2 & 3.
- 4) Close up the housing. Make sure each housing has a black O-ring in the thread groves. Use wrench to tighten each housing.
- 5) **Remember: Turn ON the cold water supply and OPEN the tank valve after you finished changing filters!**
- 6) **Check for leaks!**

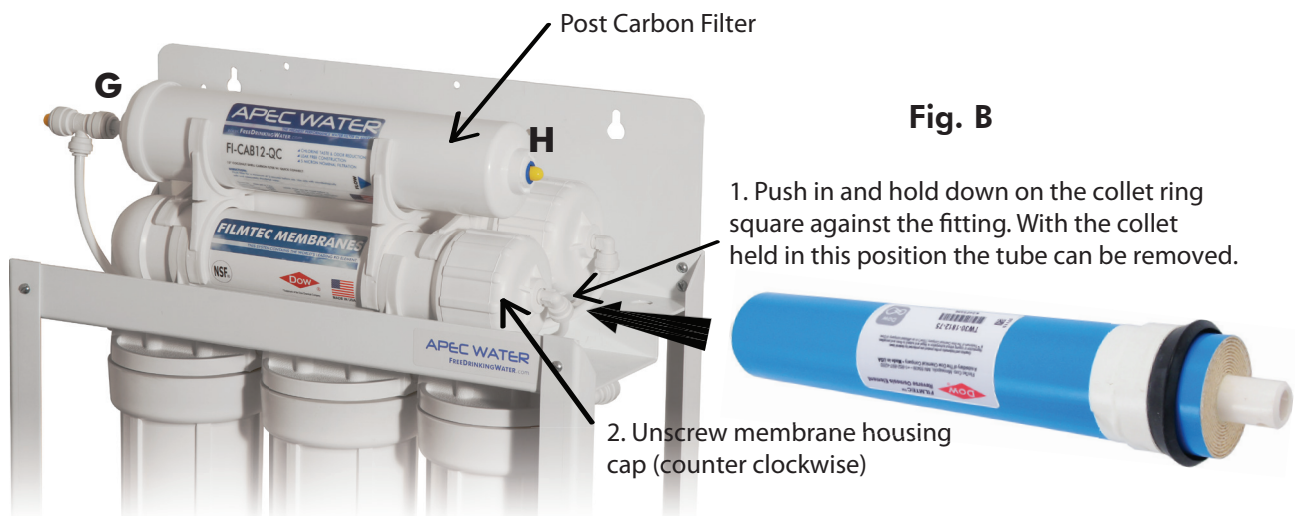


How to Replace Stage-4 Membrane: (MEM-90)

There are several membranes (2 to 4 depending on model) provided with your system. Please insert the membrane into each housing one-by-one to prevent mis-connecting the tubing. The number of housing matches with the number of membranes provided. Each housing is labeled as: "MEM-1", "MEM-2", "MEM-3", "MEM-4" depending on your RO model.

- 1) Turn OFF the cold water supply to RO system. Turn OFF tank ball-valve. Lift up RO faucet lever briefly to relief the built-up pressure inside the RO system. This will make opening the housings easier.
- 2) See **Fig.B** Locate the Membrane housings on the system and start with "MEM-1" housing first. Remove the tubing from the housing's cap. To remove tubing, Push In and Hold Down on the collet ring square against the fitting. With the collet held in this position the tube can be removed. Open up the cap (turn counter-clockwise). Remove the used membrane and discard. Insert the new membrane using a pair of pliers. Push membrane into housing. Avoid touching the Membrane with your hands to prevent contamination!
- 3) **Important!** Make sure the "double-ring" end of the membrane goes into the housing first. The membrane cannot filter water if it's inserted in the WRONG direction!
- 4) Close the housing cap. Reconnect the tubing to the cap before going onto the next housing.
- 5) Proceed to insert the other membranes in the same manner.
- 6) **Check for leaks!**
- 7) **Drain the first tank of water** (through faucet) to flush out the new membrane!
The 2nd tank of water is ready for use.

Note: Make sure the membrane's end with 2 black-rings goes into housing first!



How to Replace Last Stage Post Carbon Filter: (FI-CAB12-QC)

Replace this last filter at the same time you replace the membrane.

- 1) Locate the last stage carbon filter. See **Fig.B**
- 2) Remove the OLD filter: Disconnect the input tubing at Point G. and tubing at Point H. Discard the old filter. See **Fig.B**

To disconnect: Push in and hold down on the collet ring square against the fitting. With the collet held in this position the tubing can be removed.

- 3) Remove the 2 end plugs from the new filter to open up the parts.
- 4) Reconnect the input and output tubing. Make sure the "Flow ➡" on the filter is pointing to the pure water **output direction**.
- 5) **Check for leaks.**