

## SANISHOWER



- Ideal for medium-duty applications
- Fast and easy way to add an additional sink and/or shower

Part# 010

## SANISWIFT



- Ideal for residential applications
- Multiple inlets for various installations such as a sink, shower or even a washing machine (indirect)

Part# 021

## SANIVITE



- Ideal for heavy-duty residential and commercial applications
- Multiple inlets for various installations such as a kitchen sink, dishwasher or even a washing machine (indirect)

Part# 008

## SANICOM 1



- Ideal for heavy-duty residential and commercial applications
- Capable of handling hot water from commercial kitchens, dishwashers or even washing machines.

Part# 018

# SANIFLO

A PUMP COMPANY SINCE 1958

US — TOLL FREE:  
www.saniflo.com  
1-800-571-8191

CANADA — TOLL FREE:  
www.saniflo.ca  
1-800-363-5874

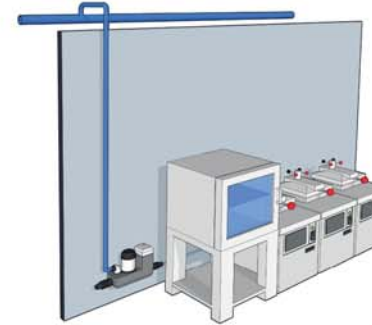
# SANIFLO

A PUMP COMPANY SINCE 1958



## POSSIBLE APPLICATIONS

The powerful 1-HP Sanicom I pump is used to evacuate hot water from commercial kitchens. The perfect solution for applications where the water temperature can cause problems.



View of restaurant inside shopping mall



Ovens located far away from main drain pipe



### CHALLENGE:

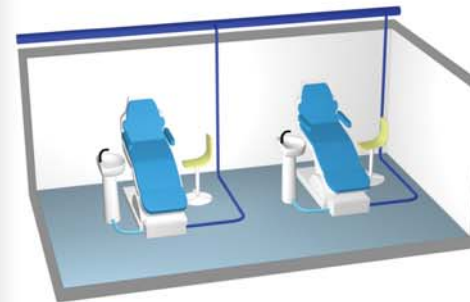
- Kitchen ovens required a connection to the main sewer in order to discharge waste water created by steam and by automatic self cleaning cycle.
- The kitchen was located in a building that had the drain far and above floor level without means of gravity.



### SOLUTION:

- Several pumps were installed, each for a different ovens in different restaurant locations.
- The pump had no issues with the temperature of the waste water since the Sanicom I can handle up to 194°F.

When the owner of a dentist office needed to add dental chairs to a new location, several Sanishower drain pumps made it possible.



New redesigned and improved dentist office



Dental chair equipped with Sanishower drain pumps



### CHALLENGE:

- The existing sewer lines were too far away from the desired chair location and traditional gravity was an expensive proposition.
- Bound by traditional plumbing limitations, the office renovation would result in thousands of dollars in labor intensive traditional plumbing works.



### SOLUTION:

- Resistant to higher temperatures, the Sanishower drain pumps are ideal for applications requiring the removal of hot water.
- With the installation of several Sanishower drain pumps, the new fit-out project was completed in only a few days.

# SANISHOWER

Medium Duty



Part# 010



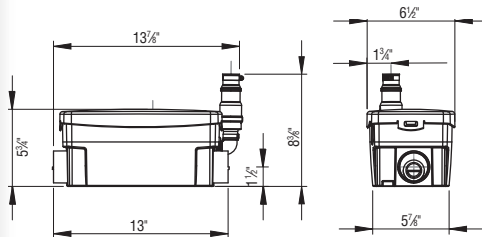
↑ 12 ft. ↑   ← 100 ft. →



The SANISHOWER gives you a fast and easy way to add an additional sink or shower to your home.

- Ideal for medium duty applications. Pre-assembled system with low inlets and built-in check valves.
- Easy to install and small enough to fit under a shower base.

<b>Discharge rate at 12":</b> 14 gal/min (50 liters/min)	<b>Power supply:</b> 115 V - 60 Hz
<b>Discharge rate at 3":</b> 20 gal/min (77 liters/min)	<b>Amperage:</b> 5.5 A
<b>Discharge pipe diameter:</b> 3/4"	<b>HP:</b> 0.2
	<b>Temperature:</b> Maximum 104°F (110°F Max.)



# SANISWIFT

Residential Grade



Part# 021



↑ 14 ft. ↑   ← 140 ft. →

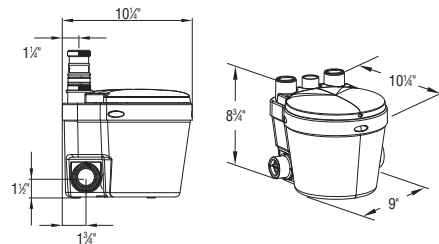


The SANISWIFT can handle multiple fixtures to solve the most difficult installations. Saniswift sets the standard as the ultimate drain pump.

- Ideal for residential applications. Pre-assembled system with low inlets and built-in check valves
- Powerful and economical pump with multiple inlets for various installations

<b>Discharge rate at 14":</b> 18 gal/min (70 liters/min)*	<b>Power supply:</b> 115 V - 60 Hz
<b>Discharge rate at 3":</b> 24 gal/min (89 liters/min)*	<b>Amperage:</b> 4.5 A*
<b>Discharge pipe diameter:</b> 1" - 1.5"	<b>HP:</b> 0.3
	<b>Temperature:</b> Maximum 140°F

\*Measured using 1" discharge. Information will vary once the discharge size is increased. Consult with factory.



# SANIVITE

Commercial Grade



Part# 008



↑ 16 ft. ↑   ← 150 ft. →

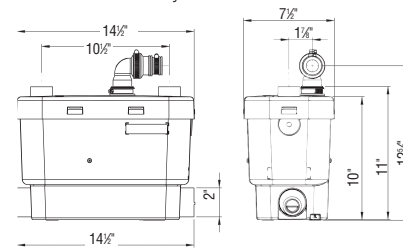


The SANIVITE is the perfect quiet solution to install a kitchen or sink on the ground level or in the basement.

- Ideal for heavy-duty applications as it can handle hot water and grease buildup
- Pre-assembled system with low inlets and built-in check valves for various installations

<b>Discharge rate at 16":</b> 18 gal/min (68 liters/min)*	<b>Power supply:</b> 115 V - 60 Hz
<b>Discharge rate at 3":</b> 29 gal/min (110 liters/min)*	<b>Amperage:</b> 4.5 A*
<b>Discharge pipe diameter:</b> 1" - 1.5"	<b>HP:</b> 0.4
	<b>Temperature:</b> Maximum 140°F

\*Measured using 1" discharge. Information will vary once the discharge size is increased. Consult with factory.

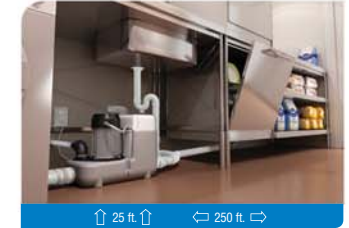


# SANICOM 1

Commercial Grade



Part# 018



↑ 25 ft. ↑   ← 250 ft. →



The SANICOM 1 drain pump is used to pump gray water away from a variety of fixtures in commercial and residential applications.

- Ideal for heavy-duty residential and commercial applications
- Powerful 1-HP drain pump meant for applications where hot water can be an issue as it is capable of handling up to 194°F.

<b>Discharge rate at 25":</b> 17 gal/min (64 liters/min)	<b>Power supply:</b> 120 V - 60 Hz
<b>Discharge rate at 3":</b> 33 gal/min (125 liters/min)*	<b>Amperage:</b> 10 Amps (Max)
<b>Discharge pipe diameter:</b> 1"	<b>HP:</b> 1
	<b>Temperature:</b> Maximum 194°F

