

# Installation Diagram

## Replacing Your Filters

To insure your system keeps performing at its best, only use original OEM Certified filters. Using untested filters will reduce the performance of your system and void its warranty.

To change your filter(s), turn off your main water line to your system and follow **steps 5 - 7** in the **System Installation** section.

**Change your filter(s) every 4 - 6 months** (depending on usage and water quality).

### SCAN TO ORDER

Scan your system model number below to purchase replacement filters

 LWHS-D	 LWHGAC	 LWH-D	
 MWSH-D	 MWH-D	 MWSH-D20	 MWH-D20
 MWSH-D-WELL	 MWH-D-WELL	 MWSH-D20-WELL	 MWH-D20-WELL

### Operational Parameters

Installation needs to comply with state and local plumbing regulations. These systems are intended to be used with cold water only.

	Maximum	Minimum
Operational Temperature	100°F (37.8°C)	40°F (4.4°C)
Operating Pressure	75psi (5.98 kg/cm <sup>2</sup> )	20psi (1.406 kg/cm <sup>2</sup> )
pH Parameters	10	5



support@ifilters.com  
www.ifilters.com



# Installation Guide

Whole House Filtration Systems  
LWH & MWH Series



# Thank you and congratulations on the purchase of a quality, state of the art iFilters Water Treatment System.

All of our filtration systems are designed in California USA and are made from quality NSF Approved filters and components.

### System Inspection Before Starting

Remove the system and all the components out of the box, take note of all parts. Inspect the system housings, fittings and connections carefully, make sure nothing was damaged during transit. If any part is cracked or damaged, please **do not proceed** with the installation and contact iFilters or your distributor for an exchange or diagnosis.

### Components List

LWH / MWH Series Systems include:

- 2 Stainless Steel Mounting Screws or Lag Bolts & Washer.
- 1 Bracket (preinstalled on some systems).
- 1 Housing Wrench.

### Tools Recommended For Installation

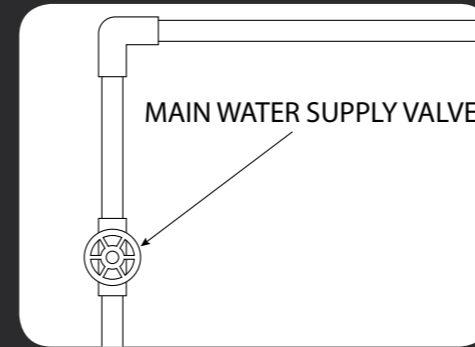
- Variable Speed Drill
- Drill Bit
- Bolt Bit
- Adjustable Wrench
- Teflon Tape
- Pen or Pencil

### System Maintenance

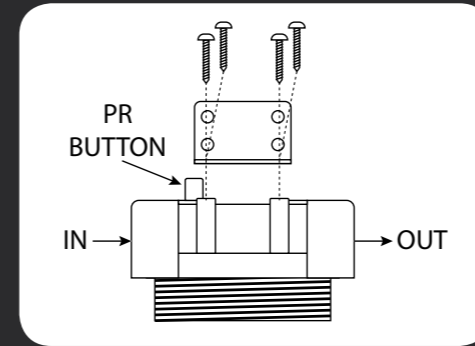
All of our system require little maintenance. The only regular maintenance required is filter replacement every 4 - 6 months (depending on usage and water quality in your area). It is important to change out your filters at the recommended intervals as indicated in this sheet to keep your system working properly. When replacing any of the filter elements, pay special attention to the housing it belongs to as installing the filters incorrectly will impact the performance of the system.

## System Installation

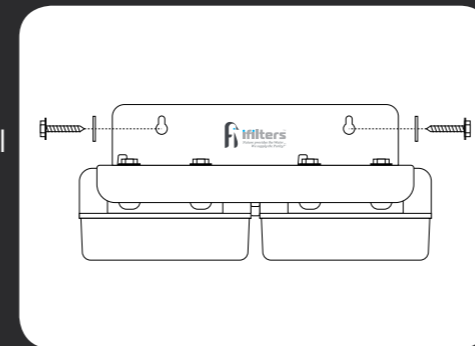
**1** Shut off the main water line to your home.



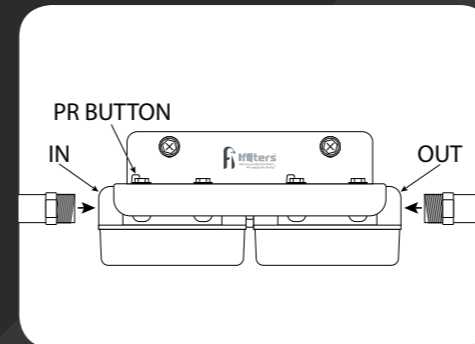
**2** Install the Housing Cap onto the Bracket using the included Stainless Steel Screws or Lag Bolts and Washer. \*Pre-installed on some systems.



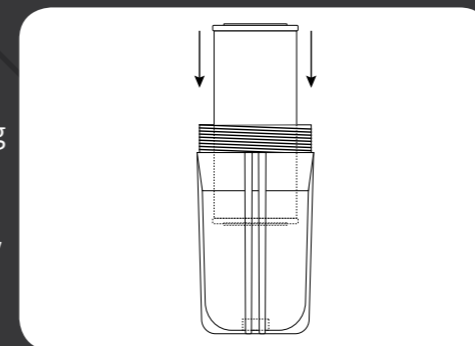
**3** Install system to wall using the included Stainless Steel Screws. (Lag Bolts and Washers on MWH Series).



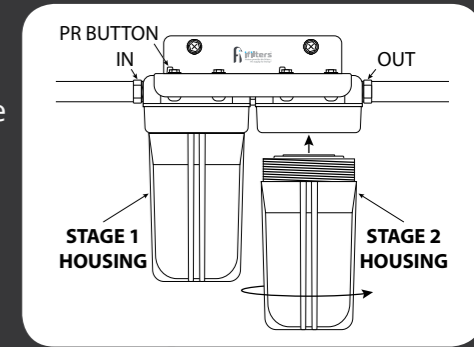
**4** Attach your incoming supply plumbing to the "IN" Port on the system. Attach the plumbing going into your home to the "OUT" port on the system. **DO NOT** solder while system is connected.



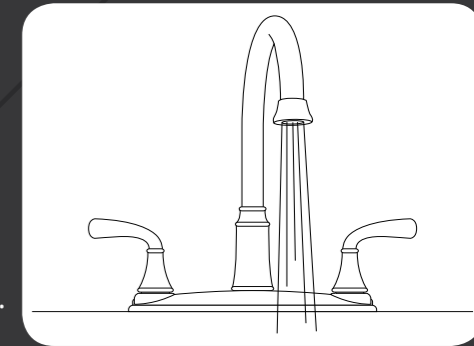
**5** Unwrap cartridges and insert into each of the correct housings, centering on the stand pipe in the bottom of the housing. Stage 1 is closes to the "IN" port on the system.



**6** Install housing(s) onto the corresponding head and turn clockwise until snug. (DO NOT OVERTIGHTEN)



**7** 1) Turn main water supply on and open nearest faucet to the system to flush filters (5 minutes). 2) Remove any screens on the faucet. 3) Check system for leaks. 4) **System is now ready.**



**Optional Add Ons:** Ball Valves, Bypass, Ground Jumper Wire, Water Softener, Post Filter, and UV Filter are not included.

**Warning:** The plastic components of the system will interrupt the continuity of the grounded (conductive) plumbing system. A grounded "jumper wire" bridging the equipment to the plumbing system must be installed prior to systems use. Consulting a Licensed Plumber is highly recommended (see Installation Diagram).

Do not use with water that is microbiologically unsafe or of unknown quality without adequate disinfection before or after the system.

**Caution:**

- Filtration System must be protected against freezing and extreme heat, which can cause the housing(s) to crack and the components to fail and may cause water leakage. Filtration system should not be installed in direct sunlight since UV ray make housings and other components brittle.
- It is important that the O-ring be properly seated or a water leak could occur as the O-ring provides the water-tight seal between the cap and the housing.
- To prevent possible water damage, housings should be replaced every 4 years (5 years for clear housings).