



ALL-IN-ONE HEAT AND HOT WATER

95% AFUE Qualifies for top rebates across the US²

PERFECT FOR REPLACING A BOILER

Compatible with any hydronic heating devices including Rheem® Hydronic Air Handlers

OUTDOOR RESET SENSOR (INCLUDED)

Tracks outdoor temperatures and overrides the heating set point as needed to keep the home comfortable when weather changes

AUTO BOOST FEATURE

If the thermostat set point has not been achieved in a reasonable time, the combi will auto boost the hydronic loop to reach the desired temperature more quickly

RCBH199DVLN¹ & RCBH180DVLN¹

Indoor Direct Vent Only
18,000-199,000 BTU/h
Natural and LP Gas

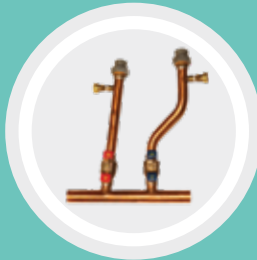
Accessories



CONDENSATE NEUTRALIZER

For safe disposal of condensate³

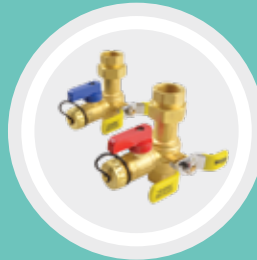
SP1215
(Optional)



PRIMARY MANIFOLD ACCESSORY

Make installations easier with pre-assembled manifold kit

RTG20318
(Optional)



SERVICE VALVES

Enable easy isolation of the pump for annual maintenance

RTG20220AB
(Sold Separately)



VENTING TERMINATION KITS

Allow for an easy installation with concentric or horizontal venting kits

SP20245 – 3" Concentric
SP20286 – 3" Low-Profile

¹ For Propane models, replace the **N** with **P** when ordering.

² See local offers for details.

³ Check your local plumbing codes.





NEW! Prestige® High Efficiency Combination Boiler



AFUE	Up to 95% – Qualifying for top rebates across the US*
Venting Type	Vents with Schedule 40 PVC, CPVC, PP
Max Vent Run	2"(50ft) / 3"(100ft)
Dimensions	28.7" H, 17.3" W, 14.8" D
Weight	90 lbs.
Warranty	Heat Exchanger: 10 Years
	Parts: 5 Years
	Labor: 1 Year
Ultra Low NOx	All Natural Gas Models
Glycol Mix	Up to 50%

*See local offers for details.

Description	199,900 BTU Max.	180,000 BTU Max.
Natural Gas	RCBH199DVLN	RCBH180DVLN
Propane	RCBH199DVLP	RCBH180DVLP

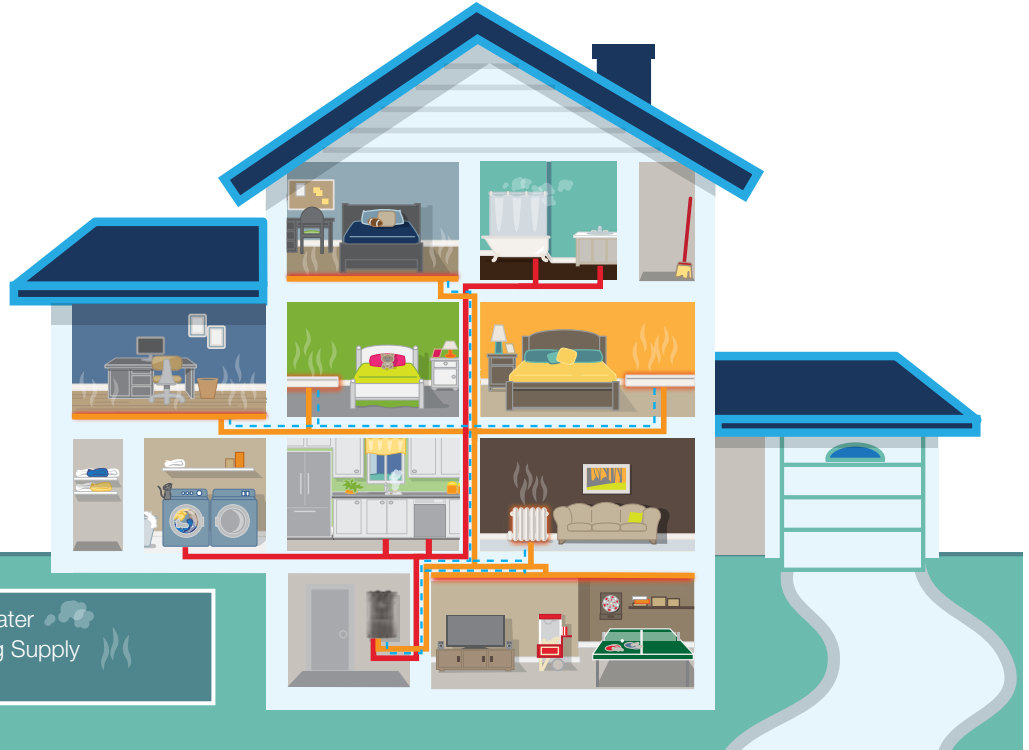
Description	Turndown Ratio Heating Mode	Turndown Ratio Domestic Hot Water	Max GPM	GPM at 77°F Rise
RCBH199DVLN/P	6.7:1	11:1	9.9	4.5
RCBH180DVLN/P	5.6:1	10:1	9.0	4.1

SMALL UNIT BIG HEAT

Continuous domestic hot water and hydronic home heating in one space-saving solution

WORKS WITH:

- Hydronic Baseboard Heating
- Radiant Flooring
- Radiators
- Hydronic Air Handlers



In keeping with its policy of continuous progress and product improvement, Rheem reserves the right to make changes without notice.

Rheem Water Heating • 1115 Northmeadow Parkway, Suite 100
Roswell, Georgia 30076 • 1.800.621.5622

Rheem Canada Ltd./Ltée • 125 Edgeware Road, Unit 1
Brampton, Ontario L6Y 0P5 • 1.800.268.6966