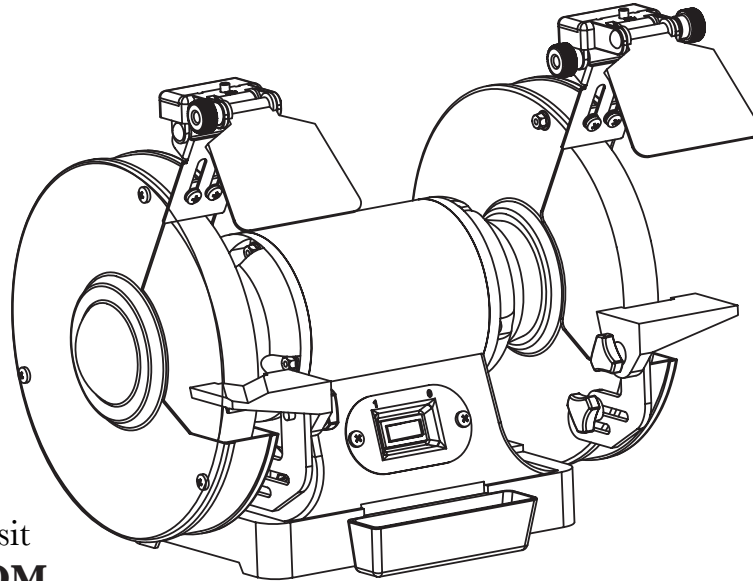




8-INCH BENCH GRINDER WITH LED LIGHTS



For replacement parts visit
WENPRODUCTS.COM


Model # 4282
bit.ly/WENvideo

IMPORTANT:

Your new tool has been engineered and manufactured to WEN's highest standards for dependability, ease of operation, and operator safety. When properly cared for, this product will supply you years of rugged, trouble-free performance. Pay close attention to the rules for safe operation, warnings, and cautions. If you use your tool properly and for intended purpose, you will enjoy years of safe, reliable service.

NEED HELP? CONTACT US!

Have product questions? Need technical support?
Please feel free to contact us at:

 **800-232-1195** (M-F 8AM-5PM CST)

 techsupport@wenproducts.com

 **WENPRODUCTS.COM**



TABLE OF CONTENTS

Technical Data	2
General Safety Rules	3
Specific Safety Rules For Bench Grinders.....	5
Electrical Information	7
Unpacking	8
Know Your Bench Grinder	9
Assembly	10
Operation	12
Maintenance.....	14
Exploded View & Parts List.....	16
Warranty	18

TECHNICAL DATA

Model Number:	4282
Motor:	120V, 60 Hz, 4.8A
Wheel Speed:	3450 RPM (no load)
Grinding Wheel Size:	8 in. x 1 in.
Arbor Size:	5/8 in.
Wheel Grits:	#60 (Medium Grit, Left Wheel) #36 (Coarse Grit, Right Wheel)
Net Weight:	30.5 pounds
Product Dimensions:	14 x 10 x 11.75 inches

Compatible with:

- WEN 4288 Cast Iron Bench Grinder Pedestal Stand
- WEN 858WW 8-Inch Crimped Benchtopy Steel Wire Wheel

GENERAL SAFETY RULES

Safety is a combination of common sense, staying alert and knowing how your item works.

SAVE THESE SAFETY INSTRUCTIONS.



WARNING! Read all safety warnings and all instructions. Failure to follow the warnings and instructions may result in electric shock, fire and serious injury. To avoid mistakes and serious injury, do not plug in your tool until the following steps have been read and understood.

WORK AREA SAFETY

1. Keep work area clean and well lit. Cluttered or dark areas invite accidents. Do not work on floor surfaces that are slippery with sawdust or wax. Keep the ground clear of tripping hazards.
2. Do not operate power tools in explosive atmospheres, such as in the presence of flammable liquids, gases or dust. Power tools create sparks which may ignite the dust or fumes.
3. Keep bystanders at a safe distance from the work area. Never allow children or pets near the tool.

ELECTRICAL SAFETY

1. Do not expose power tools to rain or wet conditions. Water entering a power tool will increase the risk of electric shock.
2. Power tool plugs must match the outlet. Never modify the plug in any way. Modified plugs with non-matching outlets will increase the risk of electric shock.
3. Check all power supplies periodically. Do not use defective cords. Damaged or entangled cords increase the risk of electric shock. Never use the cord for carrying, pulling or unplugging the power tool. Keep cord away from heat, oil, sharp edges or moving parts.

PERSONAL SAFETY

1. Stay alert. Watch what you are doing and use common sense when operating a power tool. Do not use a power tool while you are tired or under the influence of drugs, alcohol or medication. A moment of inattention while operating power tools may result in serious personal injury.
2. Do not wear loose clothing, gloves, neckties, or jewelry (rings, watches, etc.) when operating the tool. Inappropriate clothing and items can get caught in moving parts and draw you in. Always wear non-slip footwear and tie back long hair.
3. Use personal protective equipment. Always wear safety goggles at all times that comply with ANSI Z87.1. Use ear protection such as plugs or muffs during extended periods of operation. Wear work gloves to protect your hands. Wear a face mask or dust mask to fight the dust.
4. Keep proper footing and balance at all times and do not overreach when operating the power tool.



WARNING: Dust generated from certain materials can be hazardous to your health. Always operate the tool in a well-ventilated area and wear a dust mask. Use dust collection systems when processing wood and plastics. Dust extractors or dust bags must not be connected when processing metals.

GENERAL SAFETY RULES

POWER TOOL USE AND CARE

1. Avoid accidental start-ups. Make sure the power switch is in the OFF position before connecting the plug to a power source or carrying the tool.
2. Check power tool for damaged parts. Check for misalignment of moving parts, jamming, breakage, improper mounting, or any other conditions that may affect the tool's operation. Do not use the power tool if the switch does not turn ON/OFF. Any part that is damaged should be properly repaired or replaced before use.
3. Do not force the tool to do a job for which it was not designed. Use the correct power tool and accessories and follow the instructions for your application to prevent hazardous situations.
4. Remove adjustment tools. Always make sure all adjustment tools or wrenches are removed from the tool before turning on the power tool.
5. Keep guards in place and in working order before operating the tool. All protection and safety devices must be in place after completing repair and maintenance procedures.
6. Never leave a running tool unattended. Do not leave the tool until it has come to a complete stop.

POWER TOOL MAINTENANCE

1. Always disconnect the power cord plug from the electrical outlet when making adjustments, changing parts, or storing power tools. Such preventive safety measures reduce the risk of starting the power tool accidentally.
2. Maintain power tools properly. Safely store power tools out of the reach of children. Always keep tools clean and in good working order. Follow instructions for lubricating and changing accessories.
3. Only have your power tool serviced by a qualified repair person using only identical replacement parts. Use of any other part can cause personal injury and damage to the tool.

CALIFORNIA PROPOSITION 65 WARNING

This product and some dust created by power sanding, sawing, grinding, drilling, and other construction activities may contain chemicals, including lead, known to the State of California to cause cancer, birth defects, or other reproductive harm. Wash hands after handling.

Some examples of these chemicals are:

- Lead from lead-based paints.
- Crystalline silica from bricks, cement, and other masonry products.
- Arsenic and chromium from chemically treated lumber.

Your risk from these exposures varies depending on how often you do this type of work. To reduce your exposure to these chemicals, work in a well-ventilated area with approved safety equipment such as dust masks specially designed to filter out microscopic particles.

SPECIFIC RULES FOR BENCH GRINDERS



WARNING: Do not plug in or operate this tool until the entire manual has been read and understood. Failure to do so may result in personal injury or machine damage.

1. Use only the correct grinding wheels that meet the following requirements:
 - The speed rating of the wheel is greater than 3450 RPM.
 - The wheel complies with ANSI B7.1.
 - The size of the wheel is 8 inches in diameter and 1 inch thick with a 5/8-inch arbor. Do not use wheels with incorrect arbor size.
2. Always inspect grinding wheels prior to use for cracks or missing pieces. If imperfections are present, replace wheel immediately before use. Never use wheel washers or screws that are defective or incorrect.
3. Thoroughly inspect the grinder. Do not use the bench grinder if the flange nut or arbor hex nut is missing or if the spindle shaft is bent. Use only flanges furnished with this bench grinder.
4. Never touch a grinding wheel or other moving parts during operation or immediately after use. It takes approximately 3 minutes for the wheels to come to a stop after the tool is switched off.
5. Do not overtighten the wheel nut. Do not use an impact wrench to make adjustments to the grinding wheel nuts, as it could cause damage to the wheel, which could cause severe injury.
6. Risk of injury due to accidental starting. Do not use in an area where children may be present.
7. Always secure the bench grinder by bolting it down to its supporting surface to prevent the grinder from tipping over, sliding, or walking during operation.
8. Do not remove the wheel guard, unless changing a grinding wheel. Ensure the cover is replaced before using the grinder. Always use the guards, spark deflectors and eye shields during operation.
9. Check the ON/OFF switch of your tool. Do not use tool if switch does not turn it on and off. Have defective switches replaced by an authorized service center.
10. Stand beside the bench grinder during start-up, not directly in front. Never stand or have any part of your body in line with the path of the wheel.
11. Never start the grinder when the wheel is in contact with the workpiece.
12. Always hold the workpiece firmly against the work rest.
13. Always ease the workpiece against the abrasive wheel when starting to grind. A harsh impact can break the wheel. Use light pressure when starting to grind. Too much pressure on a cold wheel can cause the wheel to crack.
14. Do not use the grinding wheel to cut anything.
15. Do not apply excess stress to the grinding wheel. Excessive pressure may damage the tool, cause the motor to overheat, and prematurely wear down the grinding wheel.

SPECIFIC RULES FOR THE BENCH GRINDER

16. New wheels may require dressing to make them round. Use a grinding wheel dressing tool (not included) to shape or remove glaze from grinding wheels.
17. Keep the distance between the wheel and tool rest at most a 1/8-inch (3.2 mm) space. Adjust the work rest accordingly as the wheel grinds down to a smaller diameter with use over time.
18. Guard against electrical shock by preventing body contact with grounded surfaces. For example: pipes, radiators, ranges, refrigerator enclosure, etc.
19. Never reach to pick up a workpiece, a piece of scrap, or anything else that is in or near the grinding path of the wheel.
20. Avoid awkward operations and hand positions where a sudden slip could cause your hand to move into the wheel. Always make sure you have good balance.
21. Do not turn the switch on and off rapidly. This could cause the wheel to loosen and create a hazard. Should this ever occur, stand clear and allow the wheel to come to a complete stop. Disconnect your grinder from the power supply and retighten the wheel nut securely.
22. Frequently clean grinding dust from beneath the grinder.
23. If any part of this grinder is missing, broken, bent, or damaged in any way, or if any electrical component fails to perform properly, shut off the power switch, remove the machine plug from the power source and have the damaged, missing, or failed parts replaced before operation.

ELECTRICAL INFORMATION

GROUNDING INSTRUCTIONS

IN THE EVENT OF A MALFUNCTION OR BREAKDOWN, grounding provides the path of least resistance for an electric current and reduces the risk of electric shock. This tool is equipped with an electric cord that has an equipment grounding conductor and a grounding plug. The plug **MUST** be plugged into a matching outlet that is properly installed and grounded in accordance with ALL local codes and ordinances.

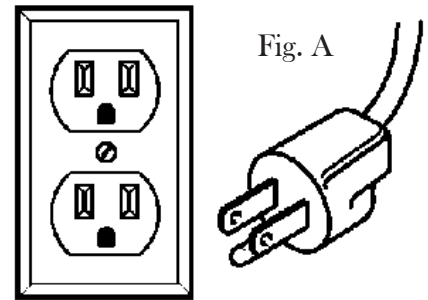
DO NOT MODIFY THE PLUG PROVIDED. If it will not fit the outlet, have the proper outlet installed by a licensed electrician.

IMPROPER CONNECTION of the equipment grounding conductor can result in electric shock. The conductor with the green insulation (with or without yellow stripes) is the equipment grounding conductor. If repair or replacement of the electric cord or plug is necessary, **DO NOT** connect the equipment grounding conductor to a live terminal.

CHECK with a licensed electrician or service personnel if you do not completely understand the grounding instructions or whether the tool is properly grounded.

USE ONLY THREE-WIRE EXTENSION CORDS that have three-pronged plugs and outlets that accept the tool's plug as shown in Fig. A. Repair or replace a damaged or worn cord immediately.

CAUTION: In all cases, make certain the outlet in question is properly grounded. If you are not sure, have a licensed electrician check the outlet.



WARNING: This tool is for indoor use only. Do not expose to rain or use in damp locations.

EXTENSION CORD GUIDELINES

Make sure your extension cord is in good condition. When using an extension cord, be sure to use one heavy enough to carry the current your product will draw. An undersized cord will cause a drop in line voltage resulting in loss of power and overheating. The table below shows the correct size to be used according to cord length and nameplate ampere rating. When in doubt, use a heavier cord. The smaller the gauge number, the heavier the cord.

Make sure your extension cord is properly wired and in good condition. Always replace a damaged extension cord or have it repaired by a qualified person before using it.

Protect your extension cords from sharp objects, excessive heat and damp/wet areas.

Use a separate electrical circuit for your tools. This circuit must not be less than a #12 wire and should be protected with a 15 A time-delayed fuse. Before connecting the motor to the power line, make sure the switch is in the OFF position and the electric current is rated the same as the current stamped on the motor nameplate. Running at a lower voltage will damage the motor.

WARNING: This tool must be grounded while in use to protect the operator from electric shock.

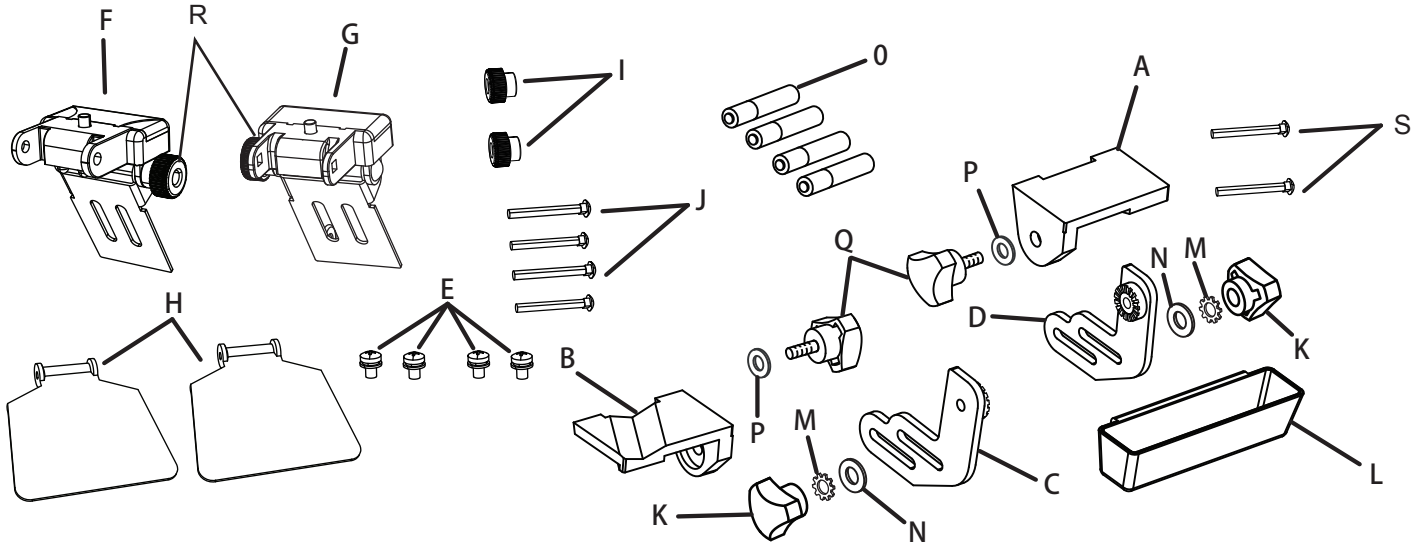
AMPERAGE	REQUIRED GAUGE FOR EXTENSION CORDS			
	25 ft.	50 ft.	100 ft.	150 ft.
4.8 A	18 gauge	16 gauge	16 gauge	14 gauge

UNPACKING

Carefully remove the tool and any accessories from the box. Make sure that all items listed in the packing list are included. If any part is damaged or missing, please contact our customer service at (800) 232-1195, M-F 8-5 CST.

PACKAGING LIST

The following items are included with the tool:



- | | | | |
|----|--|----|--------------------------|
| A. | Right Work Rest | J. | Carriage Bolts (4) |
| B. | Left Work Rest, Grooved | K. | Bracket Knobs (2) |
| C. | Left Work Rest Bracket | L. | Coolant Tray |
| D. | Right Work Rest Bracket | M. | Lock Washers (2) |
| E. | Phillips Screws with Lock Washers & Flat Washers (4) | N. | Flat Washers (2) |
| F. | Left Spark Deflector with LED Assembly | O. | AAA Batteries (4) |
| G. | Right Spark Deflector with LED Assembly | P. | Flat Washers (2) |
| H. | Eye Shields (2) | Q. | Work Rest Knobs (2) |
| I. | Eye Shield Lock Knobs (2) | R. | Deflector Lock Knobs (2) |
| | | S. | Bracket Bolts |

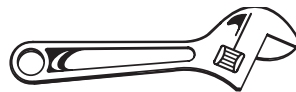
TOOLS NEEDED

The following tools (not included or drawn to scale) are needed for assembly:

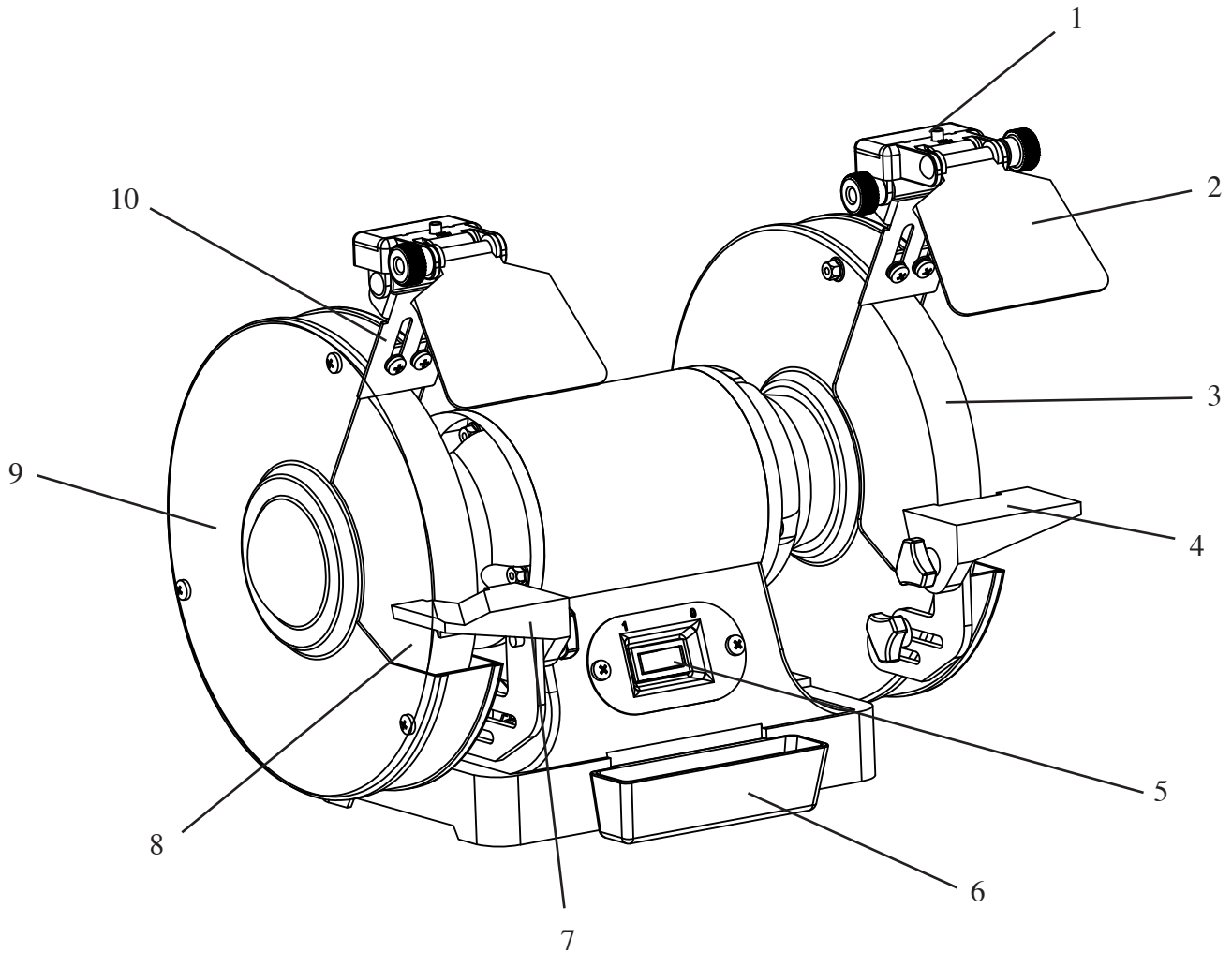
- Phillips Screwdriver



- Adjustable Wrench
or 15/16 (24 mm) crescent or socket wrench



KNOW YOUR BENCH GRINDER



- | | |
|---------------------------|-----------------------------|
| 1. LED Light Switch | 6. Coolant Tray |
| 2. Eye Shield | 7. Left Work Rest (Grooved) |
| 3. Grinding Wheel 36 Grit | 8. Grinding Wheel 60 Grit |
| 4. Right Work Rest | 9. Wheel Guard |
| 5. ON/Off Switch | 10. Spark Deflector |

ASSEMBLY



WARNING: Do not connect to power supply until assembly is complete. Failure to comply could result in accidental starting and personal injury.

MOUNTING THE SPARK DEFLECTORS (Fig. 1)

1. Attach the spark deflector plates onto the LED assembly using a carriage bolt (J) and deflector lock knob (R).

2. Position the spark deflector assembly (F) onto the wheel cover with its lower edge about 1/16 of an inch from the grinding wheel.

3. Mount the spark deflector assembly using two Phillips screws (E), lock washers and flat washers from under the spark deflector plate. Tighten the screws securely using a Phillips screwdriver.

4. Repeat the steps above for attaching the other spark deflector.

ATTACHING THE EYE SHIELDS (Fig. 2)

1. Place the eye shield (H) onto the spark deflector assembly (G) and align the holes.

2. Insert the carriage bolt (J) through the holes of the spark deflector (G) and eye shield (H). Tighten with the eye shield knob (I).

3. Repeat the steps above for installing the other eye shield.

MOUNTING THE WORK RESTS (Fig. 3)

1. Install the wheel bracket (D):

From the outside of the wheel cover, insert the bracket bolt (S) through the wheel cover hole and the lower slot of the work rest bracket (D). Secure it with the flat washer (N), lock washer (M) and bracket knob (K). Tighten the knob.

2. Install the work rest (A):

Install the work rest on the inside of the wheel cover by inserting the work rest screw through the flat washer (P), the work rest (A), the upper slot of the work rest bracket and the wheel cover. Tighten the knob.

3. Repeat the steps above to install the other work rest.

NOTE: Adjust the distance between the wheel and the work rest to maintain 1/16 in. or less separation as the diameter of the wheel decreases with use.

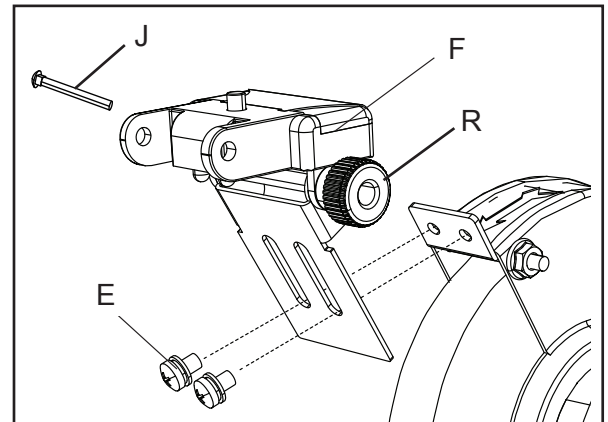


Fig. 1

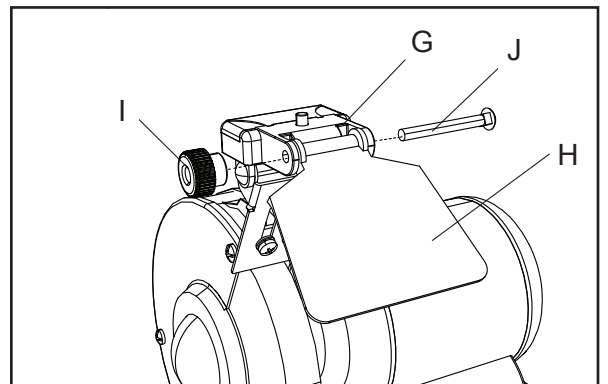


Fig. 2

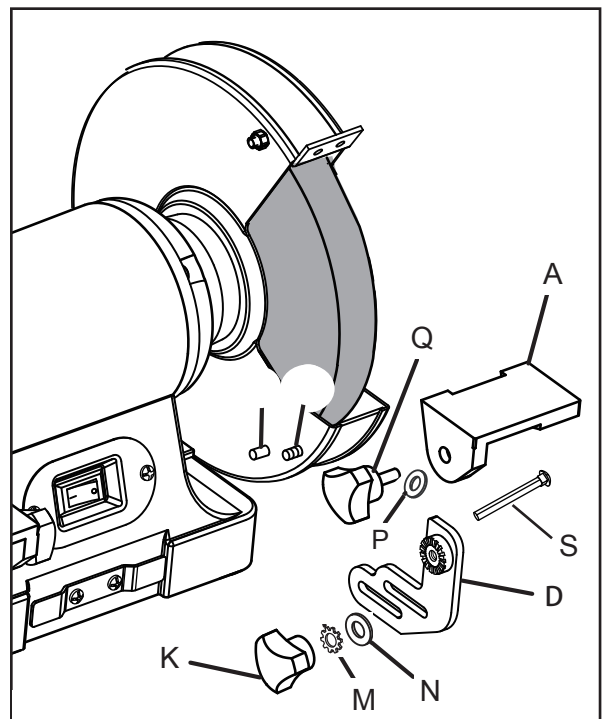


Fig. 3

ASSEMBLY

INSTALLING THE COOLANT TRAY (Fig. 4)

Place the coolant tray (L) over the coolant tray bracket then firmly push tray down onto the bracket to secure it in place.

INSTALLING THE LED BATTERIES (Fig. 5 & 6)

1. The LED light switch is on top of the spark shield assembly. Make sure that the LED button has been pushed to the OFF position when installing batteries.

2. Remove the battery covers from the top of the LED assemblies.

3. Install the AAA batteries (O) inside the battery compartments according to the polarity indicators, then replace the battery covers.

4. Repeat the steps above for the other LED light.

MOUNTING TO THE WORK SURFACE (Fig. 7)

The bench grinder should be firmly attached to a reliable work surface using mounting hardware (not included) through the base of the grinder's mounting holes. This will prevent the bench grinder from vibration, walking or tipping during operation.

NOTE: This bench grinder is compatible with the WEN 4288 Cast Iron Bench Grinder Pedestal Stand.

1. Prepare 1/4 in. bolts, flat washers, lock washers and hex nuts (not included). The bolt length should be 1-1/2 in. longer than the thickness of the workbench.

2. Locate and mark the holes where the grinder is to be mounted onto the work surface. **NOTE:** If mounting to a work bench, drill four 3/8 in. diameter holes through the workbench.

3. Place the bench grinder onto the workbench, aligning holes in base with holes in the workbench.

4. Insert four 1/4 in. diameter bolts and washers and attach with nuts securely.



WARNING: Always make sure your bench grinder is securely mounted to a workbench. Failure to do so could result in an accident resulting in possible serious personal injury.

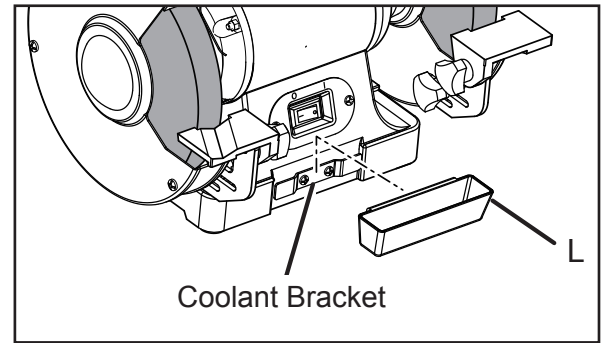


Fig. 4

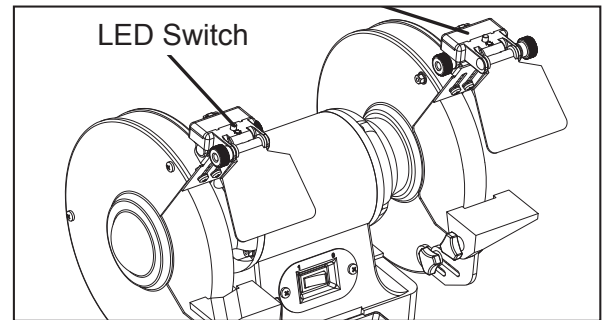


Fig. 5

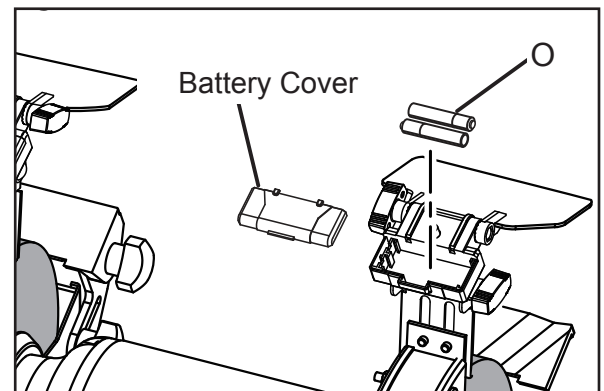


Fig. 6

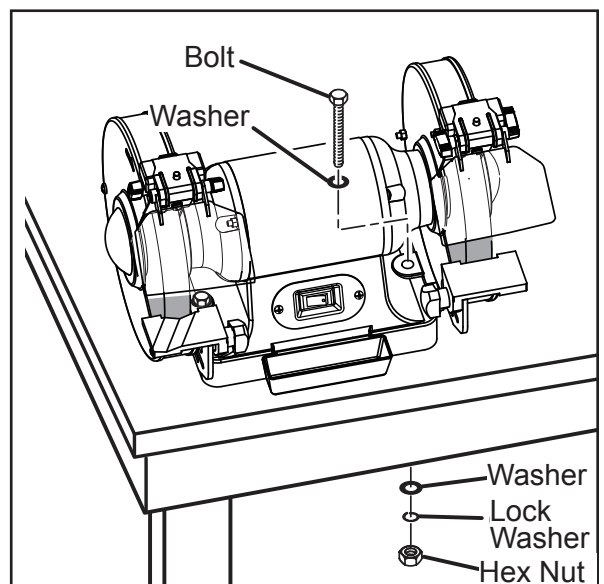


Fig. 7

OPERATION



WARNING: Always wear eye protection with side shields marked to comply with ANSI Z87.1. Failure to do so could result in objects being thrown into your eyes resulting in possible serious injury.

USING THE COOLANT TRAY (Fig. 8)

The coolant tray allows you to cool overheated workpieces. Fill the tray half way with water or appropriate coolant before operation.

Periodically empty out the coolant tray. Rinse it of any metal filaments and refill it with clean water to prevent buildup on the wheel itself. Your cleaning schedule should depend on frequency of use.

BASIC OPERATION

1. To operate the bench grinder, always wear safety glasses and stand to the side of the grinder (as opposed to in front) before turning the tool on.

2. Turn the ON/OFF switch to “I”. Once the tool is up and running, allow it to reach full speed before grinding. This will take about 15 seconds (Fig. 9).

3. Hold the work piece firmly against the tool rest. Hold very small pieces with pliers or other suitable clamps.

4. Choose the suitable grinding wheel for you operation. The 60-grit wheel is good for small material removal and sharpening. The 36-grit wheel is good for rapid material removal and tool reshaping.

5. Feed the work piece smoothly and evenly into the grinding wheel. Move the workpiece back and forth at an even pace to make for even grinding and prevent burning any one area of the surface.

NOTE: Sparks are normal during grinding operations. Protect yourself and the surrounding environment from flying sparks.

6. Move the work piece slowly and avoid forcing the workpiece against the grinding wheel. If the wheel tends to slow down from excessive force, you should occasionally release the pressure to let the wheel return to full speed.

NOTE: Excessive pressure may damage the tool, cause the motor to overheat, and prematurely wear down the grinding wheel.

7. Grind only on the face of the grinding wheel; never on the side of it.

8. Regularly place the hot end of the workpiece into the coolant tray to cool it off.

9. Turn the ON/OFF switch to “O”. The wheels will take about 3 minutes and 20 seconds to come to a full stop. Avoid contact with the bench grinder’s housing until it has stopped and cooled down completely. Unplug the tool from the power source.

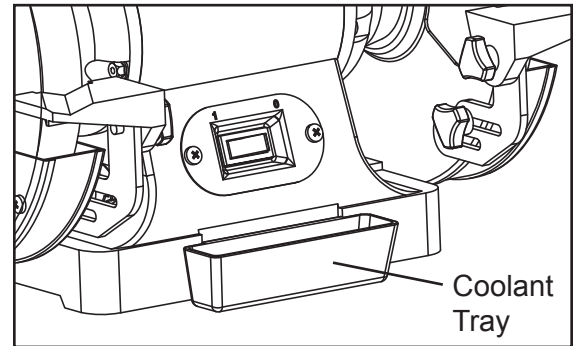


Fig. 8

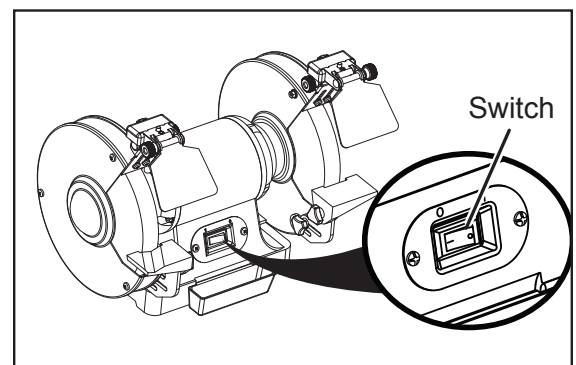


Fig. 9

OPERATION

SHARPENING LAWN MOWER BLADES (Fig. 10)

Lawn mower blades are usually sharpened on only one edge and dressed up slightly on the other. Perform this sharpening process on both cutting ends of the blade.

After sharpening, be sure to balance the blade by removing additional material from the heavy end. Unbalanced blades can cause serious crank shaft damage to your lawn mower. There are a number of inexpensive cone balancers on the market for this purpose. Alternatively, you can balance the blade using a screwdriver that is secured onto a vise as shown.

NOTE: Always remove spark plug wires or battery from the mower before servicing the blades to prevent accidental startups.

SHARPENING CHISELS & FLATHEAD SCREWDRIVERS (Fig. 11)

The end of a properly sharpened chisel or screwdriver will be a perfectly flat rectangle, perpendicular to the center line of the shank. The two sides and two faces will taper outward from the end. Hold each face of the screwdriver against the wheel to true it up, then ease the end straight into the stone to grind it true.

SHARPENING DRILL BITS (Fig. 12)

Use the grooved work rest to provide angled support to drill bits during grinding operation. The angled groove running through the work rest allows for a cradle for drill bits during sharpening operations.

For better sharpening results, you can use a sharpening jig (available at most hardware stores). Begin on one side of the point at the existing angle, then twist the bit while maintaining contact with the grinding surface. Sharpen only the tip of the drill bit.

SHARPENING KNIVES

Working from the heavy end of the blade towards the tip to remove metal from both faces of the knife.

SHARPENING SCISSORS

If possible, take the scissors apart to make the sharpening operation easier and safer. Remove material only from the outside surface and work from the heavy end of the blade toward the tip.

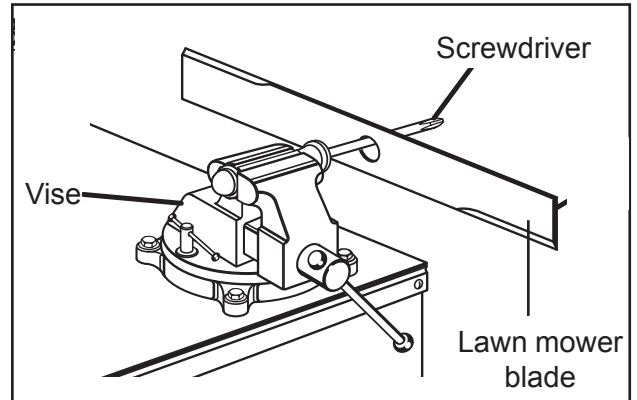


Fig. 10

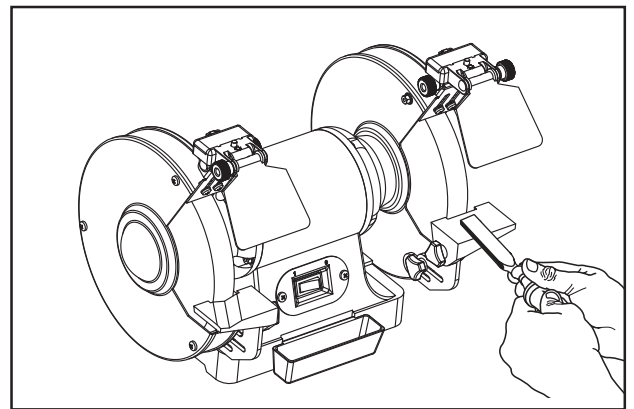


Fig. 11

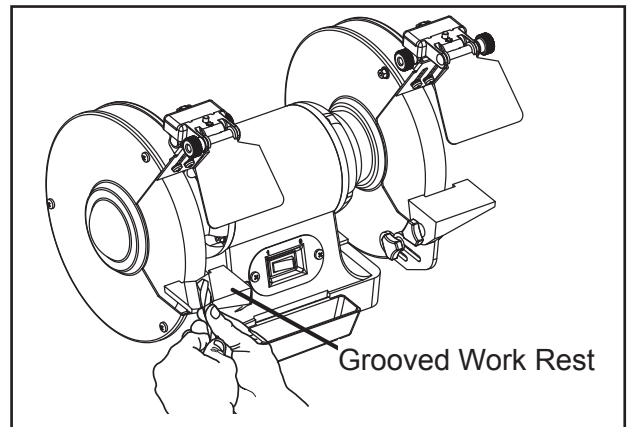


Fig. 12

MAINTENANCE



WARNING: For your own safety, turn the switch OFF and remove the plug from the electrical outlet before adjusting or performing maintenance inspection work on the bench grinder.

GENERAL CLEANING AND MAINTENANCE

1. Regularly check the tool and use a soft brush to remove accumulated dust. Wear safety goggles to protect your eyes while cleaning.
2. If the body of the grinder needs cleaning, wipe it down with a soft, damp cloth. A mild detergent can be used. Do not use alcohol, petrol or other similar cleaning agents. Do not make contact with the grinding wheels with any damp cloth.



WARNING: Do not at any time let brake fluids, gasoline, petroleum based products, penetrating oils, etc., come in contact with plastic parts. Chemicals can damage, weaken or destroy plastic which could result in serious personal injury.

3. Always make sure the eye shields are transparent and not blocking the view of the grinding wheel.
4. All of the bearings in this tool are lubricated with sufficient amount of high grade lubricant for the life of the unit under normal operating conditions. Therefore, no additional lubrication is required.

POWER CORD REPLACEMENT

If replacement of the power supply cord is necessary, this must be done by an authorized service center in order to avoid a safety hazard.

CHANGING THE GRINDING WHEEL (FIG. 13)

In normal use, grinding wheels may become cracked, grooved, rounded at the edges, chipped, out of true or loaded with foreign material. Grinding wheels should be inspected before each use. Cracked wheels should be replaced IMMEDIATELY. While any of the other conditions can be remedied with a dressing tool (not included).

To replace a grinding wheel:

1. Ensure that the machine is powered off and unplugged.
2. Loosen the bracket knob and remove the work rest bracket assembly from the wheel cover. Repeat for the other side.
3. Using a Phillips head screwdriver, remove the two remaining bolts and nuts from the wheel cover. Repeat for the other side.
4. Using two 24 mm wrenches, loosen the arbor hex nut found on the outside edge of the grinding wheel. The left side hex nut is loosened by using a clockwise wrench rotation while the right side hex nut is loosened with a counterclockwise rotation.

If you are having difficulty with the two-wrench method, you may try holding one wheel while loosening the nut. Wear gloves if you decide to use this method to avoid scraping your hand or fingers. Remove the arbor hex nut and outer wheel flange.

MAINTENANCE

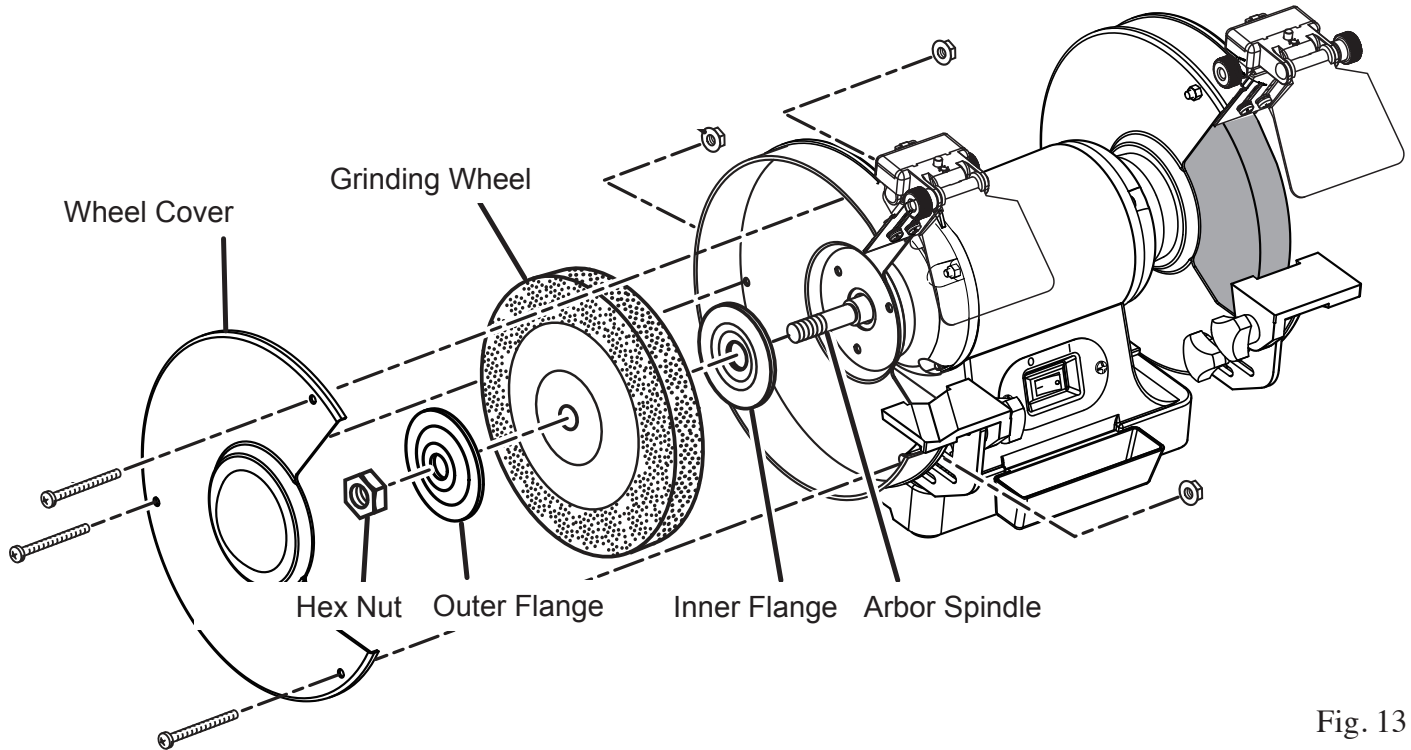


Fig. 13

5. Replace the grinding wheel with a new grinding wheel that has a speed rating higher than 3450 RPM. The outer diameter of the wheel should be 8 inches and the arbor size should be $5/8$ of an inch. Do not remove labels from the grinding wheels.

6. Once the wheel has been replaced, re-attach the outer flange and the arbor hex nut.

CAUTION: Do not overtighten the nut, or use an impact driver to tighten. This can cause damage to the grinding wheels, which could cause personal injury.

7. Replace the wheel cover and secure with the bolts and knobs. Replace the work rest assemblies. Make sure all guards, shields and work rests are correctly positioned before operation.

USING A WIRE OR BUFFING WHEEL

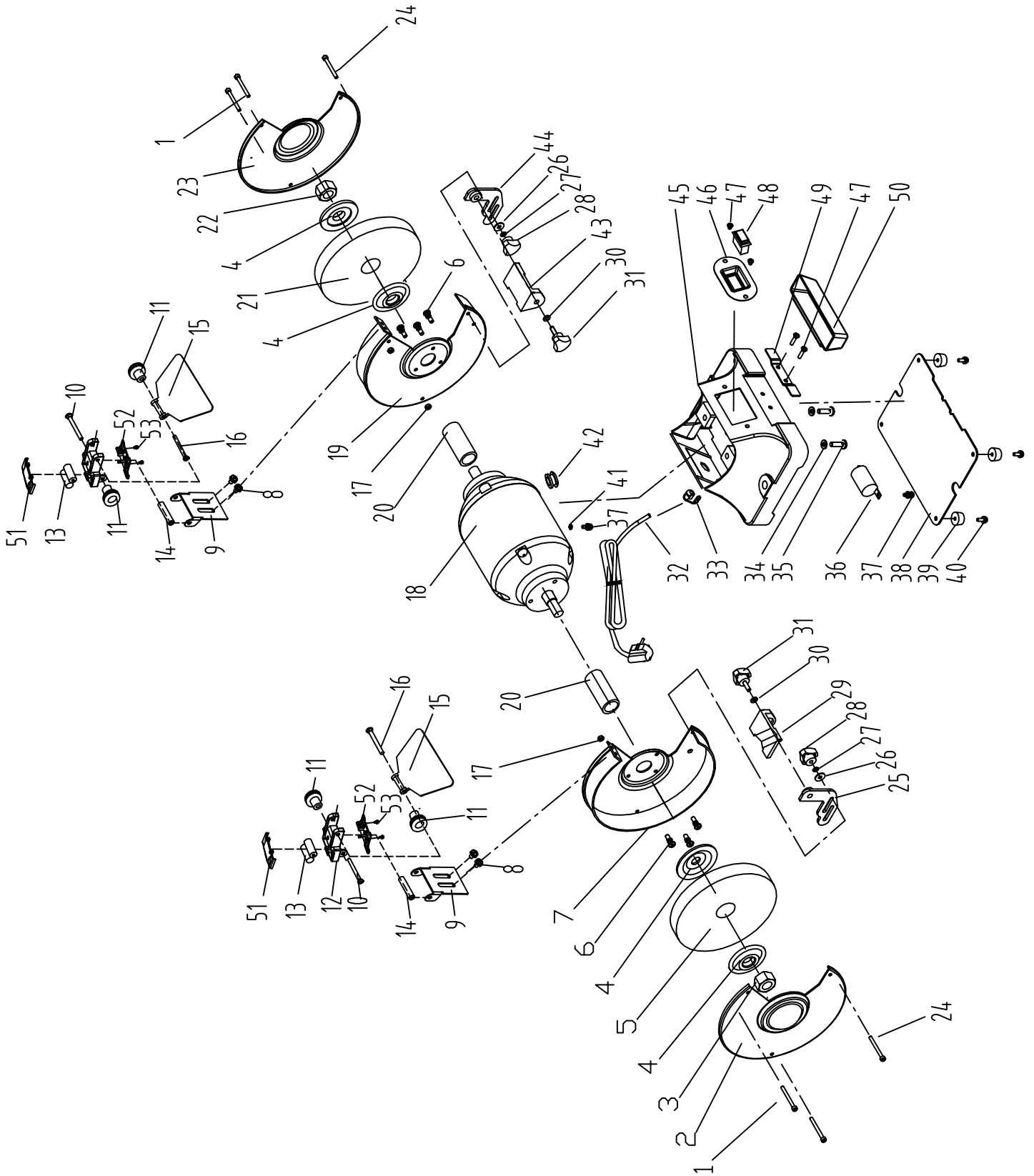
A wire or buffing wheel can be installed onto either side of the grinder as needed. You know what is the perfect wire wheel for your WEN bench grinder? The WEN 858WW 8-Inch Crimped Benchtopy Steel Wire Wheel, with $5/8$ -inch arbor and .011-inch wire. Purchase your wire wheel today at wenproducts.com.

More spacers may be required when using wire wheels, depending on the wheel's thickness. **NOTE:** The first spacer should always go onto the arbor shaft, between the innermost wheel flange and the body of the grinder. If needed, a second spacer should go between the outermost wheel flange and the arbor hex nut. Always use the included wheel flanges even if using a wire or a buffing wheel.

STORAGE

Store the bench grinder and the grinding wheels to prevent them from the potential hazards of moisture, contaminants and other damage.

EXPLODED VIEW AND PARTS LIST



EXPLODED VIEW AND PARTS LIST

No.	Part No.	Description	Qty.
1	4286-001	M5x48 Screw	4
2	4286-003	Left wheel guard cover	1
3	4286-004	M16 I type hex nut	1
4	4282-004	Flange	4
5	4282-005	60# Grinding Wheel φ200×25×φ15.88	1
6	4276-013	M5x10 Screw	6
7	4282-007	Left wheel guard plate	1
8	4282-008	M5x8 Screw	4
9	4282-009	Eyeshield support	2
10	4282-010	M5x60 Bolt	2
11	4282-011	Locking knob	4
12	4282-012	Lamp assembly	2
13	4282-013	Battery	4
14	4282-014	Washer	2
15	4282-015	Eyeshield	2
16	4282-016	M5x55 Bolt	2
17	4276-008	M5 Hex nut	4
18	4282-018	Motor	1
19	4282-019	Right wheel guard plate	1
20	4282-020	Shaft bushing	1
21	4282-021	36# Grinding wheel φ200×25×φ15.9	1
22	4286-056	M16 I type hex nut	1
23	4286-057	Right wheel guard cover	1
24	4286-002	M5x51 Bolt	2
25	4286-019	Left fixing work rest	1
26	4286-020	φ5 Big flat washer	2

No.	Part No.	Description	Qty.
27	4282-027	φ5 Toothed locking washer	2
28	4282-028	M5 Locking nut	2
29	4286-022	Left movable work rest	1
30	4286-014	φ6 Flat Washer	2
31	4282-031	M6×17 Tool rest locking knob	2
32	4276-043	Power cord with plug	1
33	4276-041	Cord clamp	1
34	4282-034	φ8 Spring washer	2
35	4282-035	M8×20 Hex bolt	2
36	4282-036	25UF/300V Capacitor	1
37	4276-033	M4x8 Screw	2
38	4282-038	Bottom plate	1
39	4286-038	Rubber feet	4
40	4286-039	M5x16 Screw	4
41	4276-024	φ4 Toothed locking washer	2
42	4282-042	Cord bushing	1
43	4286-052	Right movable work rest	1
44	4286-053	Right fixing work rest	1
45	4282-045	Base	1
46	4282-046	Switch plate	1
47	4282-047	M4x8 Screw	4
48	4282-048	Switch	1
49	4282-049	Coolent tray clamp	1
50	4282-050	Coolent tray	1
51	4282-051	Battery cover	2
52	4282-052	Lamp cover	2
53	4282-053	ST2.9X8 Screw	4

NOTE: The part numbers have been consolidated with our existing bench grinders WEN 4276 and WEN 4286.

LIMITED TWO YEAR WARRANTY

WEN Products is committed to building tools that are dependable for years. Our warranties are consistent with this commitment and our dedication to quality.

LIMITED WARRANTY OF WEN CONSUMER POWER TOOLS PRODUCTS FOR HOME USE

GREAT LAKES TECHNOLOGIES, LLC (“Seller”) warrants to the original purchaser only, that all WEN consumer power tools will be free from defects in material or workmanship for a period of two (2) years from date of purchase. Ninety days for all WEN products, if the tool is used for professional use.

SELLER’S SOLE OBLIGATION AND YOUR EXCLUSIVE REMEDY under this Limited Warranty and, to the extent permitted by law, any warranty or condition implied by law, shall be the repair or replacement of parts, without charge, which are defective in material or workmanship and which have not been misused, carelessly handled, or misrepaired by persons other than Seller or Authorized Service Center. To make a claim under this Limited Warranty, you must make sure to keep a copy of your proof of purchase that clearly defines the Date of Purchase (month and year) and the Place of Purchase. Place of purchase must be a direct vendor of Great Lakes Technologies, LLC. Third party vendors such as garage sales, pawn shops, resale shops, or any other secondhand merchant void the warranty included with this product. Contact techsupport@wenproducts.com or 1-800-232-1195 to make arrangements for repairs and transportation.

When returning a product for warranty service, the shipping charges must be prepaid by the purchaser. The product must be shipped in its original container (or an equivalent), properly packed to withstand the hazards of shipment. The product must be fully insured with a copy of the warranty card and/or the proof of purchase enclosed. There must also be a description of the problem in order to help our repairs department diagnose and fix the issue. Repairs will be made and the product will be returned and shipped back to the purchaser at no charge.

THIS LIMITED WARRANTY DOES NOT APPLY TO ACCESSORY ITEMS THAT WEAR OUT FROM REGULAR USAGE OVER TIME INCLUDING BELTS, BRUSHES, BLADES, ETC.

ANY IMPLIED WARRANTIES SHALL BE LIMITED IN DURATION TO TWO (2) YEARS FROM DATE OF PURCHASE. SOME STATES IN THE U.S., SOME CANADIAN PROVINCES DO NOT ALLOW LIMITATIONS ON HOW LONG AN IMPLIED WARRANTY LASTS, SO THE ABOVE LIMITATION MAY NOT APPLY TO YOU.

IN NO EVENT SHALL SELLER BE LIABLE FOR ANY INCIDENTAL OR CONSEQUENTIAL DAMAGES (INCLUDING BUT NOT LIMITED TO LIABILITY FOR LOSS OF PROFITS) ARISING FROM THE SALE OR USE OF THIS PRODUCT. SOME STATES IN THE U.S. AND SOME CANADIAN PROVINCES DO NOT ALLOW THE EXCLUSION OR LIMITATION OF INCIDENTAL OR CONSEQUENTIAL DAMAGES, SO THE ABOVE LIMITATION OR EXCLUSION MAY NOT APPLY TO YOU.

THIS LIMITED WARRANTY GIVES YOU SPECIFIC LEGAL RIGHTS, AND YOU MAY ALSO HAVE OTHER RIGHTS WHICH VARY FROM STATE TO STATE IN THE U.S., PROVINCE TO PROVINCE IN CANADA AND FROM COUNTRY TO COUNTRY.

THIS LIMITED WARRANTY APPLIES ONLY TO PORTABLE ELECTRIC TOOLS, BENCH POWER TOOLS, OUTDOOR POWER EQUIPMENT AND PNEUMATIC TOOLS SOLD WITHIN THE UNITED STATES OF AMERICA, CANADA AND THE COMMONWEALTH OF PUERTO RICO. FOR WARRANTY COVERAGE WITHIN OTHER COUNTRIES, CONTACT THE WEN CUSTOMER SUPPORT LINE.