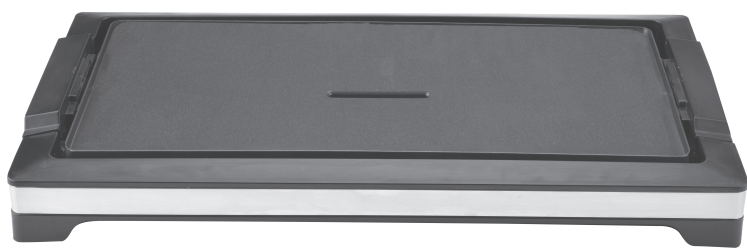


Golden Prairie
Family Griddle
User Guide

Model: AEA-155P



PLEASE READ THIS USER GUIDE
CAREFULLY BEFORE USING THE PRODUCT



IMPORTANT SAFEGUARDS

When using electrical appliances, basic safety precautions should be always taken, including the following:

1. DO NOT touch hot surfaces. Use handles or knobs.
2. To protect against electrical hazards, DO NOT immerse the cord, plugs, or the appliance in water or other liquid.
3. Close supervision is necessary when any appliance is used by or near children. Unplug from outlet when not in use and before cleaning. Allow cooling before putting on or taking off parts, and before cleaning the appliance.
4. All servicing should be performed by an authorized service representative.
5. The use of accessories or attachments not recommended by the manufacturer may cause hazards.
6. DO NOT let cord hang over the edge of table or counter, or touch hot surfaces.
7. DO NOT place on or near a hot gas or electric burner, or in a heated oven.
8. DO NOT move the unit when it is still hot.
9. Always attach the plug to the appliance first, then plug the cord in the wall outlet. To disconnect, turn the switch off, then remove the plug from the wall outlet.
10. This appliance is for Household Use Only. DO NOT use the appliance for anything other than its intended use.
11. The device is not intended to be operated with an external timer or separate remote control system.
12. DO NOT leave the unit unattended while in use.
13. DO NOT touch the metallic parts of the unit while the appliance is operating. These can become very hot.
14. Always unplug the grill immediately after using and allow cooling before cleaning and storing.
15. Always place the grill on a heat-resistant surface.
16. Never place anything between the grill plate and the food i.e.:dish, aluminum foil, etc.
17. This product is for household use only. Do not use outdoors.
18. CAUTION: This appliance generates heat during use. Proper precautions must be taken to prevent the risk of burns, fires or other damage to property caused by touching the sides or top while in use or during cooling.
19. This appliance has a polarized plug (one blade is wider than the other). To reduce the risk of electric shock, this plug is intended to fit into a polarized outlet only one way. If the plug does not fit fully into the outlet, reverse the plug. If it still does not fit, contact a qualified electrician. Do not attempt to modify the plugin anyway. (for the appliance with 2 pins polarized plug.)
20. If the supply cord is damaged, it must be replaced by the manufacturer or its service agent, or a similarly qualified person in order to avoid a hazard.

The appliance is only to be operated in the closed position.
Save these instructions.
This product is for household use only.

W12AN783A0801.1

- 1) The marked electrical rating of the cord or extension cord should be at least as great as the electrical rating of the appliance;
- 2) If the appliance is of the grounded type, the extension cord should be a grounding 3-wire cord
- 3) The longer cord should be arranged so that it does not drape over the countertop or table top where it can be pulled on by children or tripped over unintentionally.

PRODUCT	Electric Healthy Grill
Model	AEA-155P
PLATE SIZE	20.27 "× 9.84 "
RATED POWER	1800W
INPUT VOLTAGE	120V~60Hz
ORIGIN	MADE IN CHINA

5

BEFORE FIRST USE

1. Carefully unpack your Appliance. Remove all packaging materials.
2. Place the Appliance on a flat, level surface close to a 120 volt wall outlet.
3. Wipe off Cooking Plate with a damp cloth so that they are clean and free of any manufacturing oils that might be left on the surface.
4. Wipe the outside of the Appliance hosing with a soft damp cloth. NEVER immerse the Griddle, power cord and Thermostat Connector in water or any other liquid.
5. Plug into the wall outlet and heat for 5-10 minutes. This will burn off any residue from the manufacturing process.

NOTE: There may be a small amount of smoke or odor during this time but it will not last longer than a few minutes.

USING YOUR APPLIANCE

1. Plug the attached power cable into a 120V AC electrical outlet to preheat. The red POWER ON light will illuminate.
2. While preheating, prepare food. When the Red light is OFF, (about 5~10 minutes) the appliance is preheated and ready for cooking.

Your Golden Prairie Griddle has Adjustable Heat Control. Select your desired level on the control knob. The approximate temperature setting for each level is as follows:

- 1 - 210°F
- 2 - 260°F
- 3 - 320°F
- 4 - 375°F
- 5 - 430°F

3. Since your appliance uses non-stick cooking plates, the use of oil is not necessary. However, depending on the recipe, some food be more difficult to remove, and thus it is recommended to brush the bottom of the cooking plates with vegetable oil so that your food is easier to remove after cooking.
4. Place food on the grill and allow your appliance to cook. The red light will cycle on and off as the unit maintains cooking temperatures.

NOTE: While cooking the steam will be emitted from the food. This is normal.

5. After 5 to 10 minutes, allow your food to cool for 1 minute while the unit is still plugged in. Wearing a protective oven mitt or potholder, remove the food using a heat proof plastic or wooden spatula. To protect the premium quality non-stick surfaces, use only heat proof plastic or a wooden spatula to remove food. The use of metal utensils may damage non-stick cooking plates.

NOTE: If additional foods are to be cooked, wear a protective oven mitt and wipe the unit clean with a dry cloth or paper towel. Keep the appliance closed to retain heat.

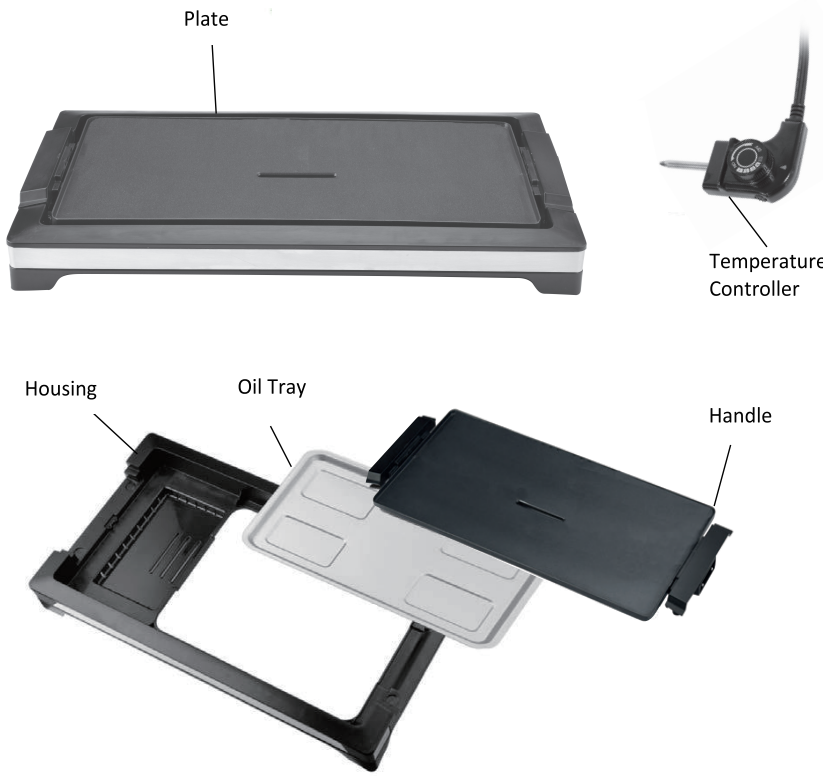
6. When cooking is complete, unplug the power cord from the electric outlet.
7. Do not clean the unit until it has completely cooled off.

3

ADDITIONAL SAFETY INSTRUCTION

- a) A short detachable power-supply cord is to be provided to reduce the risk resulting from becoming entangled in or tripping over a longer cord.
- b) If an extension cord is used:
 - 1) The marked electrical rating of the cord or extension cord should be at least as great as the electrical rating of the appliance;
 - 2) If the appliance is of the grounded type, the extension cord should be a grounding 3 - wire cord;
 - 3) The longer cord should be arranged so that it does not drape over the countertop or tabletop where it can be pulled on by children or tripped over unintentionally.

COMPONENT PARTS



2

CLEANING AND MAINTENANCE

Caution: Do not immerse the appliance, its cord or its plug in water.

Before cleaning, when you are finished using your appliance, unplug the power cord from the wall outlet and allow it to cool completely. In order to prevent food residue buildup, clean your table grill after each use.

Wipe the inside and the wells of your appliance with a clean, soapy sponge or cloth. Remove soapy residue with a damp cloth and dry thoroughly. To remove sticky stains use a nylon brush or similar utensil safe for nonstick surfaces. Do not use steel wool or scouring pads. Do not use abrasive cleansers. Wipe the exterior with a clean, damp cloth.

The cooking plates should be cleaned and conditioned before each heating. Brush the cooking plates with a clean, soft pastry brush or cloth. To condition the plates, lightly coat the cooking surfaces with solid vegetable shortening or vegetable oil.

WARNING: The appliance is very hot during use. Never use plastic or nylon utensils that are not marked heat-proof as they may melt and damage the non-stick cooking surfaces.

1. Remove stubborn stains with a plastic mesh puff or pad. A clean round kitchen brush or a toothbrush works well to remove baked-on batter from the molds. For best results, use only products with directions stating they are safe for cleaning non-stick cooking surfaces. Do not use steel wool or coarse scouring pads. Do not clean when unit is hot or in use.
2. The exterior finish should be cleaned with a non-abrasive cleaner and a soft, damp cloth. Dry thoroughly.

POLARIZED PLUG INSTRUCTIONS

This appliance has a polarized plug (one blade is wider than the other). To reduce the risk of electric shock, this plug is intended to fit into a polarized outlet only one way. If the plug does not fit fully into the outlet, reverse the plug. If it still does not fit, contact a qualified electrician. Do not attempt to modify the plug in anyway.

POWER CORD INSTRUCTIONS

- a) A short power-supply cord (or detachable power-supply cord) is provided to reduce the risk of becoming entangled in or tripping over a longer cord.
- b) Longer detachable power-supply cords or extension cords are available and may be used if care is exercised in their use.
- c) If a long detachable power-supply cord or extension cord is used:

4