



5" - 6" LED Downlight INSTALLATION GUIDE DLC-1000e / DLC-1020e / DLC-1040e

Before You Begin Read these instructions completely and carefully.

⚠ WARNING

RISK OF ELECTRIC SHOCK. LED RETROFIT KIT REQUIRES INSTALLATION KNOWLEDGE OF LUMINAIRES ELECTRICAL SYSTEMS. IF NOT QUALIFIED, DO NOT ATTEMPT INSTALLATION. CONTACT A QUALIFIED ELECTRICIAN.

RISK OF FIRE OR ELECTRIC SHOCK. INSTALL THIS KIT ONLY IN THE LUMINAIRES THAT HAVE THE CONSTRUCTION FEATURES AND DIMENSION SHOWN IN THE PHOTOGRAPHS AND/OR DRAWING.

DO NOT MAKE OR ALTER ANY OPEN HOLES IN AN ENCLOSURE OF WIRING OR ELECTRICAL COMPONENTS DURING KIT INSTALLATION.

TO PREVENT WIRING DAMAGE OR ABRASION, DO NOT EXPOSE WIRING TO EDGES OF SHEET METAL OR OTHER SHARP EDGES.

THIS DEVICE IS NOT INTENDED FOR USE WITH EMERGENCY EXITS.

COMPATIBILITY DIMENSIONS OF HOUSING 5-6 IN. (DIA) X MIN 5 (H) IN.

Components Supplied

- One LED Retrofit Downlight
- One Installation Guide

The unit covered in this report are intended to retrofit Type IC or NON-IC recessed mount Listed luminaires with instructions to remove the existing trim. The minimum dimensions of luminaires are tabulated below. These products are intended to be used in dry or damp locations. These products are classified as to FIRE and SHOCK hazards only. This device complies with Part 15 of the FCC Rules. Operation is subject to the following two conditions: (1) This device may not cause harmful interference, and (2) the device must accept any interference received, including interference that cause undesired operation.

Prepare Electrical Wiring

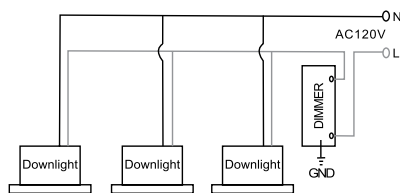
Grounding Instructions: The grounding and bonding of the overall system shall be done in accordance with National Electric Code (NEC) article 600 and local codes.

Dimming: The LED luminaires can be dimmed with many standard incandescent dimmers, however an electric low voltage version of a standard dimmers (with natural connection) is recommended for many applications. Updates in dimmer technology and special conditions may apply depending on the dimmer and type being used. To be assured of the latest information regarding luminaires and dimmers compatibility, please contact dimmer manufacturer.

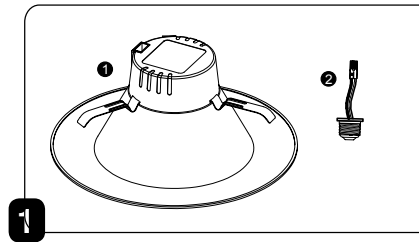
Electrical Requirements

The LED driver must be supplied with 95-132 VAC, 60Hz.

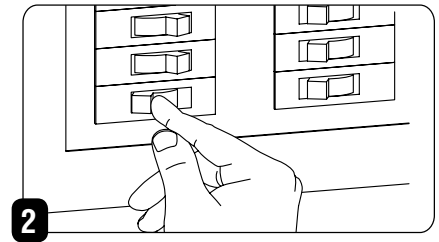
Electrical Connection



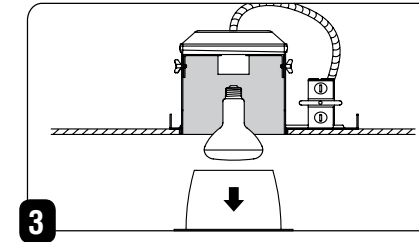
Installation



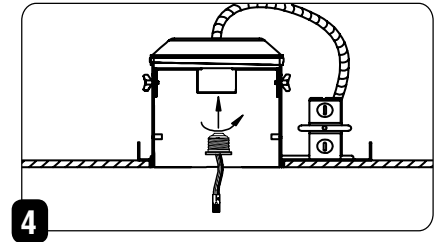
Remove Downlight from the packaging and check that the mounting clips are firmly attached. Contents include 1- Downlight, and 2- Socket adapter



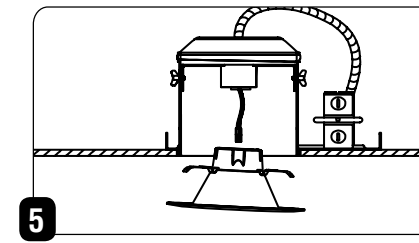
Before starting the installation process, TURN OFF POWER at the source of the housing(s) that you are installing fixture(s).



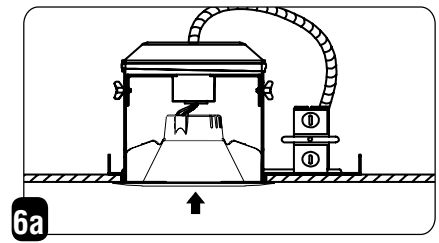
Remove existing trim and bulb, revealing the existing socket.



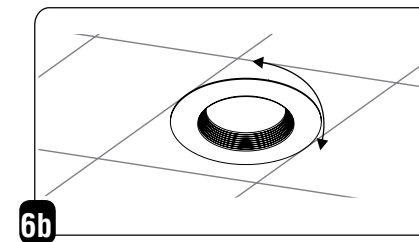
Thread the **socket adapter** into the socket.



Plug in the **female connector** of the retrofit trim into the **male connector** of the socket adapter assembly.



Push Downlight fixture into recessed housing.



Spin the downlight a bit, to ensure the trim is flush against the ceiling.

