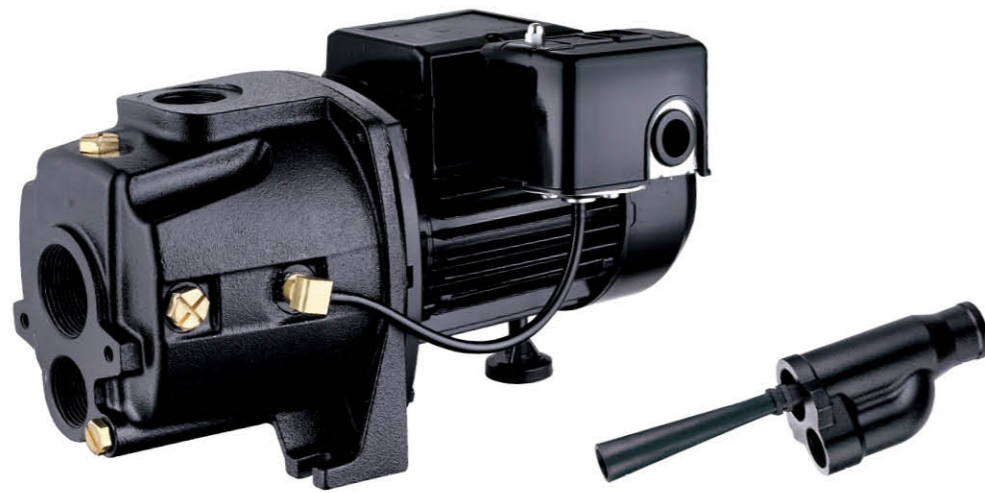
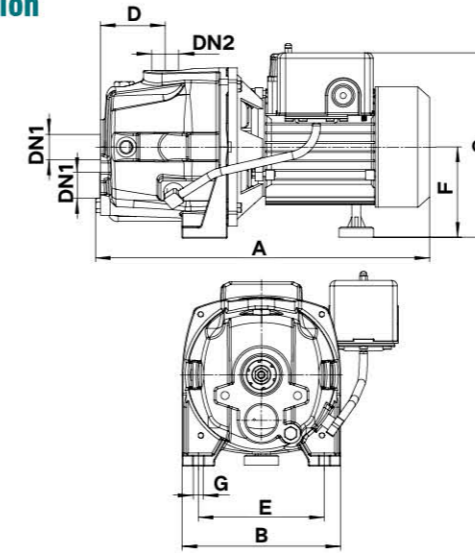


# CONVERTIBLE WELL PUMP

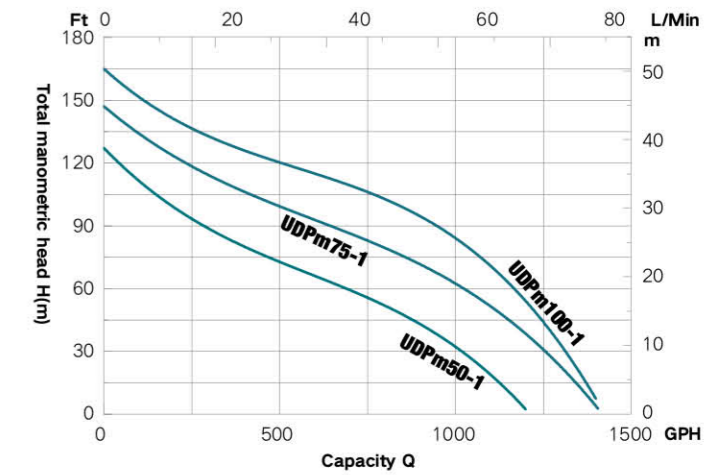


## Dimension

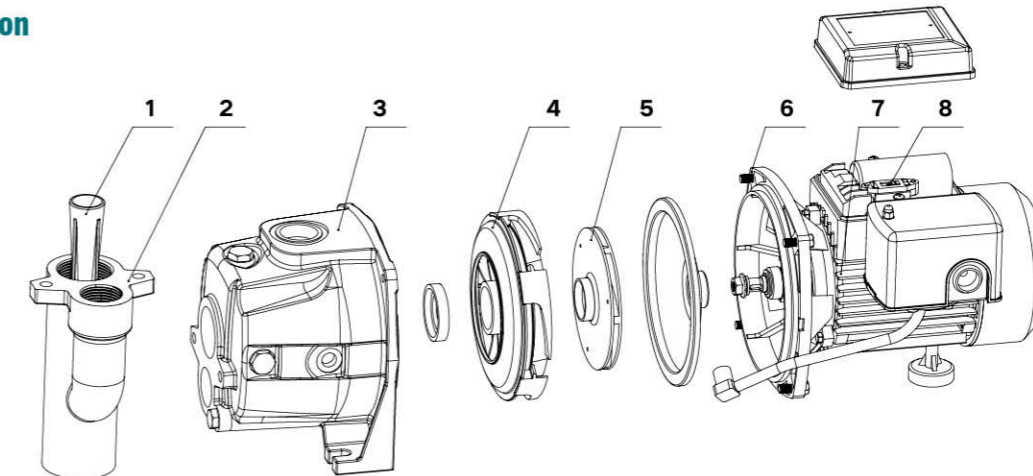


MODEL	DN1	DN2	A(in)	B(in)	C(in)	D(in)	E(in)	F(in)	G(in)
UDPM50-1	NPT 1 1/4xNPT1	NPT1	13.07	8.35	7.09	2.76	4.92	3.54	0.39
UDPM75-1	NPT 1 1/4xNPT1	NPT1	13.98	8.82	7.95	2.76	5.67	3.66	0.39
UDPM100-1	NPT 1 1/4xNPT1	NPT1	13.98	8.82	7.95	2.76	5.67	3.66	0.39

## Hydraulic Performance Curves



## Dimension



- 1 Nozzel PPO
- 2 Injector HT200
- 3 Pump body HT200
- 4 Guide vane PPO
- 5 Impeller PPO
- 6 Bracket ZL102
- 7 Electric machinery
- 8 Voltage change-over switch

## Package information

Model	GW(lbs)	L(in)	W(in)	H(in)
UDPM50-1	26.5	14.57	10.24	8.58
UDPM75-1	34.6	15.55	11.42	9.13
UDPM100-1	36.4	15.55	11.42	9.13



## Features and benefits

- Durable cast iron volute
- Built-in automatic thermal overload protector
- Pressure switch is pre-set at 30-50 PSI for automatic operation
- Dual voltage (115V/230V) motor, factory set for 230V
- Ejector is included when used in deep well
- For use on shallow well applications water level is 25ft or deep well applications water level is 60ft
- 1-1/4"NPT suction with 1"NPT discharge

## Pump Performance

Model	HP	Voltage	AMP	Discharge NPT(In)	GPH of water@Total Ft.of Head					Max. Head Ft
					5FT	35FT	70FT	100FT	130FT	
UDPM50-1	1/2	115/230V	8.8/4.4	1 in	1100	950	650	200	-	128
UDPM75-1	3/4	115/230V	12.6/6.3	1 in	1400	1220	900	430	125	147
UDPM100-1	1	115/230V	15.4/7.7	1 in	1400	1320	1050	790	310	164

CIRCULATION PUMP  
GARDEN SUBMERSIBLE PUMP  
LAWN PUMP  
WELL PUMP  
BATHTUB PUMP