

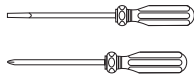
WESTBRASS

Fine Decorative Plumbing Since 1935

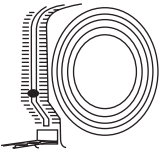
D325H or 79317H

Bathwaste & Overflow Desbordamiento de baño Dren

**YOU MAY NEED:
USTED PUEDE NECESITAR:**



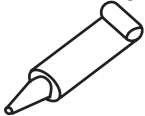
**Screwdriver
El destornillador**



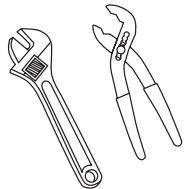
**Tape measure
Cinta métrica**



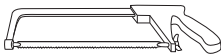
**Important: Use PTFE tape or silicone seal on screws.
Importante: Use cinta PTFE o sellador de silicón en las tornillos.**



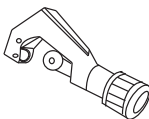
**Silicone Sealant: Use Silicone sealant under base of strainer.
Sellador de silicón: Si el lavamanos está desnivelado use sellador de silicón debajo de la base del borde.**



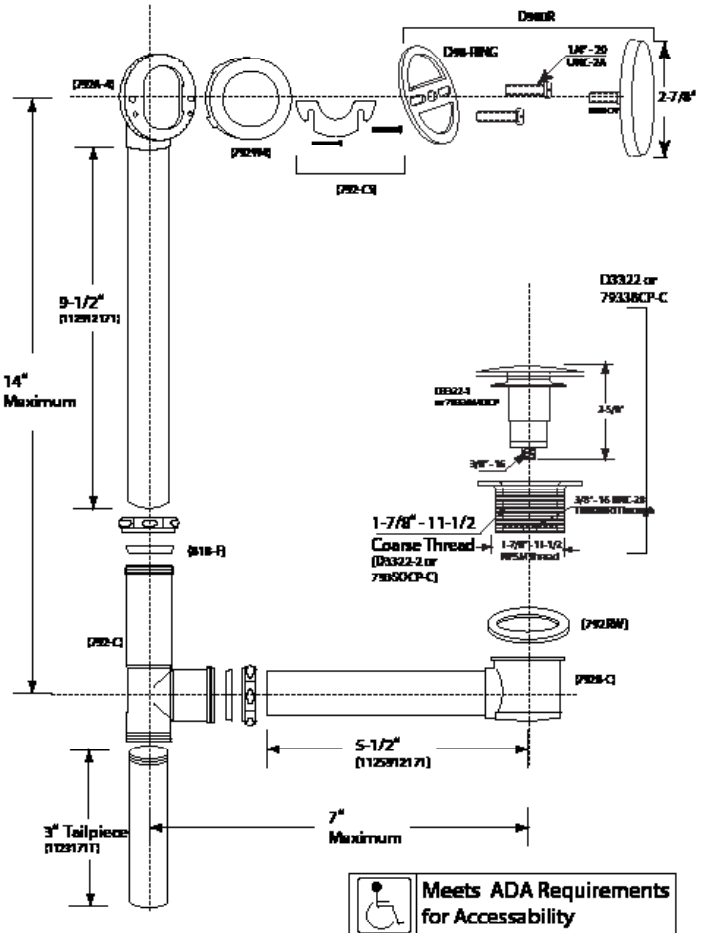
**Pliers: For removal and installation.
Alicates: Para quitar y instalación**



**Hacksaw
Sierra**

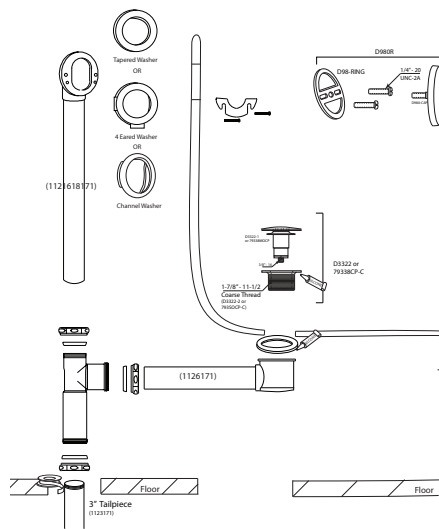


**Tubing Cutter
Cortador de Tubos**



Installation Instructions:

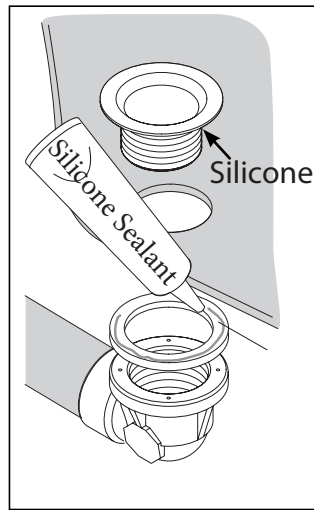
1. Measure and dry fit all connections. Use tubing cutter or hacksaw to cut tubes as required.
2. Place chosen rubber gasket on overflow top elbow. Caulk with silicone.
3. Wrap screws with PTFE tape or apply silicone. Attach ring to bottom ears with 792-CS screws and draw tight.
4. Place shoe elbow under tub, using rubber washer between bottom of tub and shoe elbow. Apply a thin bead of silicone between washer and tub.



Instrucciones de Instalación

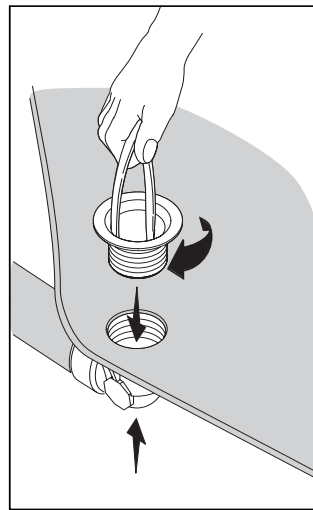
1. Medir y en forma seca todas las conexiones. Uso del cortador de tubos y sierra para cortar tubos según sea necesario.
2. Coloque la junta de goma de 4 orificios en el codo superior del rebosadero. Calafatear con silicona.
3. Envuelva los tornillos con cinta de PTFE o aplique silicona. Fije el anillo a las orejas inferiores con los tornillos.
4. Coloque el codo del zapato debajo de la bañera, usando una arandela de goma entre el fondo de la bañera y el codo del zapato. Aplique una fina gota de silicona entre la lavadora y la tina.
5. Enrosque el filtro a través de la bañera en el codo del zapato. Limpie el exceso de silicona con una toalla limpia.

5. Screw in strainer through the tub into shoe elbow. Wipe off any excess silicone with a clean towel.
6. Wrap Tailpiece with PTFE Tape or use thread compound and thread into bottom of TEE 702-C.
7. Attach TEE using nuts and ferrules.
8. Thread in drain stopper into bottom shoe.
9. Securely screw overflow cover into top elbow.
10. Check for leaks.



Silicone seal locations

Lugares de sellado de silicona



Tighten using Pliers or a plug wrench

Apriete utilizando alicates o una llave de bujías

6. Envuelva la cola con la cinta del PTFE o utilice el compuesto del hilo e hilo en la parte inferior de la TEE 702-C.
7. Conecte el TEE usando tuercas y virolas.
8. Enrosca en el elevador y enrosca el tapón en el zapato inferior.
9. Enrosque firmemente la cubierta del desbordamiento en el codo superior.
10. Compruebe si hay fugas.

CARE & MAINTENANCE

With the exception of living finishes, all Westbrass decorative finishes are protected by the strongest finish treatments available while maintaining their luxurious appearance. While some finishes are more durable than others, no finish is indestructible. Polished Chrome, Satin Nickel and PVD Polished Brass finishes are the most durable. All other finishes are electroplated; some are then coated to enhance the gloss and durability. "Living" finishes are uncoated, designed to be exposed to the air and other elements, with the intention to age and change in their natural beauty. All of our finishes, plated and living, require some care in use.

TO CLEAN:

Do not allow your product to come into contact with any cleansers fortified with ammonia, bleach, grease-cutters or other surfactant chemicals. Soft Scrub, Dawn Liquid Soap, Palmolive or any other combined cleaners contain certain chemical components that will dissolve and remove the finish's protective coating, and eventually the finish itself. Use only plain warm water and mild soap on a soft cloth or sponge. Avoid using any sponge with a scouring pad to clean your product. It is not necessary to rub hard to remove spots.

TO PROTECT:

An occasional application of Carnauba wax (without cleaners), like that found in Flitz Faucet Wax, Turtle Wax for Clear Coat Car Finishes or McGuire's Premium Wax, will enhance the finish lustre, reduce hard water spots and add an extra layer of protection to your finish.

WARRANTY

Finishes:

All sink and tub/shower drains, strainers and other trims have a 1 year warranty in the following finishes:

- | | | |
|-------------------------|----------------------|-------------------------------|
| (01) PVD Polished Brass | (26) Polished Chrome | (07) Satin Nickel |
| (12) Oil Rubbed Bronze | (50) Powder Coated W | (62) Powder Coated Flat Black |

Other Westbrass finishes, including living finishes and other electroplated finishes carry no warranty.

Functional Warranty:

The functionality of all products is warranted for a period of one year. Ceramic disc valves on any water delivery merchandise are warranted for one year. Warranties are guaranteed to the original purchaser only. Product problems attributable to abuse, misuse, improper installation, hard water, neglected maintenance or accidental damage are not covered by this warranty. Modifying the product in any way voids the warranty. The use of plumber's putty on our products also voids the warranty. Silicone

sealing compounds should be used instead. No repairs or replacements will be made under such circumstances except at customer's expense. Liability under warranties expressed or implied is limited to repair or replacement of defective goods only. In no event will Westbrass be liable for incidental or consequential damages (such as labor charges). This warranty does not cover labor charges, whether based on breach of express or implied warranty, breach of contract, negligence or any other legal theory.