

18 ft Swag Light Kit

CAUTION: Switch off the electricity at source before working with any ceiling fan, lighting fixture, or portable lamp and associated wires; either remove the fuse or switch off the circuit breaker.

Do Not hang ceiling fans on swag hooks.

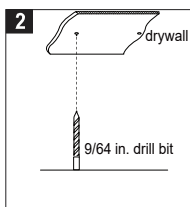
This swag kit enables you to reposition your light fixture or ceiling fan to be installed in the most efficient or pleasing location by powering your fixture from a wall receptable rather than a ceiling electrical box.

The Kit Consists Of:

- | | |
|--|----------------------------|
| 1-15 ft of Chain | 2-Swag Hooks with Fittings |
| 1-3 ft of Chain | 2-Toggle Wing Nuts |
| 1-20 ft of Cord, Cord Switch and Plug | 2-Wood Screws |
| 1-Loop with Fittings to Attach to Canopy | 2-Threaded Bolts |
| 1-Nipple | 2-Wire Connectors |
| 1-Hex Nut | 2- Rubber Washers |
| 1-Bushing | |

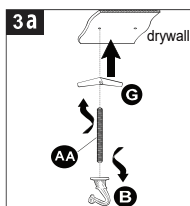
ASSEMBLY INSTRUCTIONS: Do not use swag hooks in radiant ceiling.

1. Turn off power.
2. Determine if ceiling is drywall or wood. If drywall, use a 9/64 in. drill bit (not included) to drill a pilot hole at approximate locations for each hook (B). Continue to step 3a.
NOTE: If ceiling is wood or if drilling will occur in ceiling studs, no pre-drilling is necessary. Proceed to Step 3b.



3. Install swag hooks

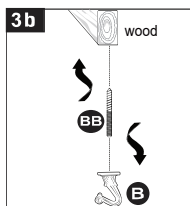
a) For drywall installation: Screw the threaded bolt (AA) completely into the hook (B). Partially screw the toggle wing nut (G) onto the threaded bolt (AA), turning toggle wing nut (G) so ends of toggle wing nut (G) close against threaded bolt (AA). Then insert toggle wing nut (G) into pre-drilled hole in the ceiling. Turn hook (B) until the base of the hook is flush against the ceiling. Skip to Step 4.



Hardware Used

- | | | |
|----|---------------|-----|
| AA | Threaded Bolt | x 2 |
|----|---------------|-----|

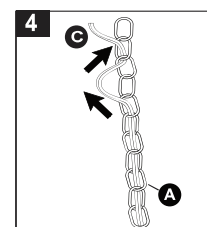
b) For wood installation: Screw the flat end of the wood screw (BB) into the hook (B). Insert the pointed end of the wood screw (BB) directly into the ceiling. Turn until the base of the hook (B) touches the ceiling.



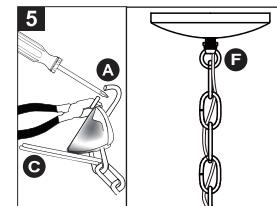
Hardware Used

- | | | |
|----|------------|-----|
| BB | Wood Screw | x 2 |
|----|------------|-----|

4. Feed electrical cord (C) through chain links in 15 ft. length of chain (A). Start with stripped end of cord and pass it through every fourth or fifth chain link until cord has passed completely through the length of chain. If your lighting fixture location requires more than 15' of chain, you may add all or part of the additional 3' length provided. Both the line switch and cord plug will pass through the chain links if you find it necessary.

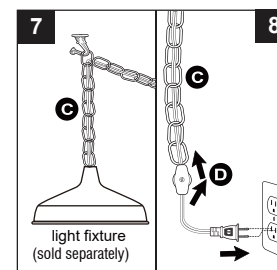


5. Screw loop (F) onto threaded pipe protruding from canopy (canopy not provided) add electrical cord will pass through it. Use pliers, a flathead screwdriver and a soft cloth (not included) to open first link of chain, and then fasten to loop in canopy. Close chain link. Pass stripped end of cord through loop. Pull approx. 6" of wire through canopy. Tie a knot in cord 4" to 5" from stripped ends.



(Knot will rest against loop fitting inside canopy and provide a "strain relief" for the electrical connections.)

6. Connect electrical cord (C) to a compatible light fixture (sold separately). If fixture is provided with ground wire, connect fixture ground wire to outlet box ground wire with wire connector.



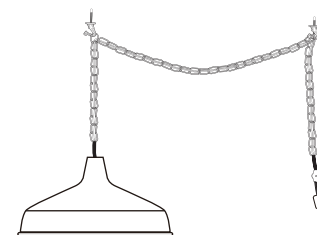
7. Drape chain to first swag hook. Drape only the chain on the hooks. Do Not Drape Electrical Cord on Hooks. Drape chain to second swag hook, Do Not Plug Cord Into Receptacle.



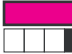
8. Plug power cord into a wall outlet.
NOTE: Use cord switch (D) to turn light fixture ON/OFF.

FOR ASSISTANCE, CALL:
SI NECESITA AYUDA, LLAME AL:
1-877-527-0313
HOMEDEPOT.COM



MADE IN VIETNAM
HECHO EN VIETNAM
DISTRIBUTED BY:
DISTRIBUIDO POR:
HOME DEPOT
2455 PACES FERRY RD.
ATLANTA, GA 30339



	A DIVISION OF 	DATE 04.22	ROUND 0
BRAND: Commercial Electric	PART	<div>PRINTED COLORS</div> <div> Dieline CMYK</div> <div><div>XXXXX</div><div>XXXXX</div><div>XXXXX</div><div>XXXXX</div></div>	
DESC.: Lamp Accessories	UPC #:		
PACKAGE TYPE: Insert Paper	SKU #:		
4.4375" w x 7" h	DESIGNER: TP		