

Parts

Parts

Required Tools

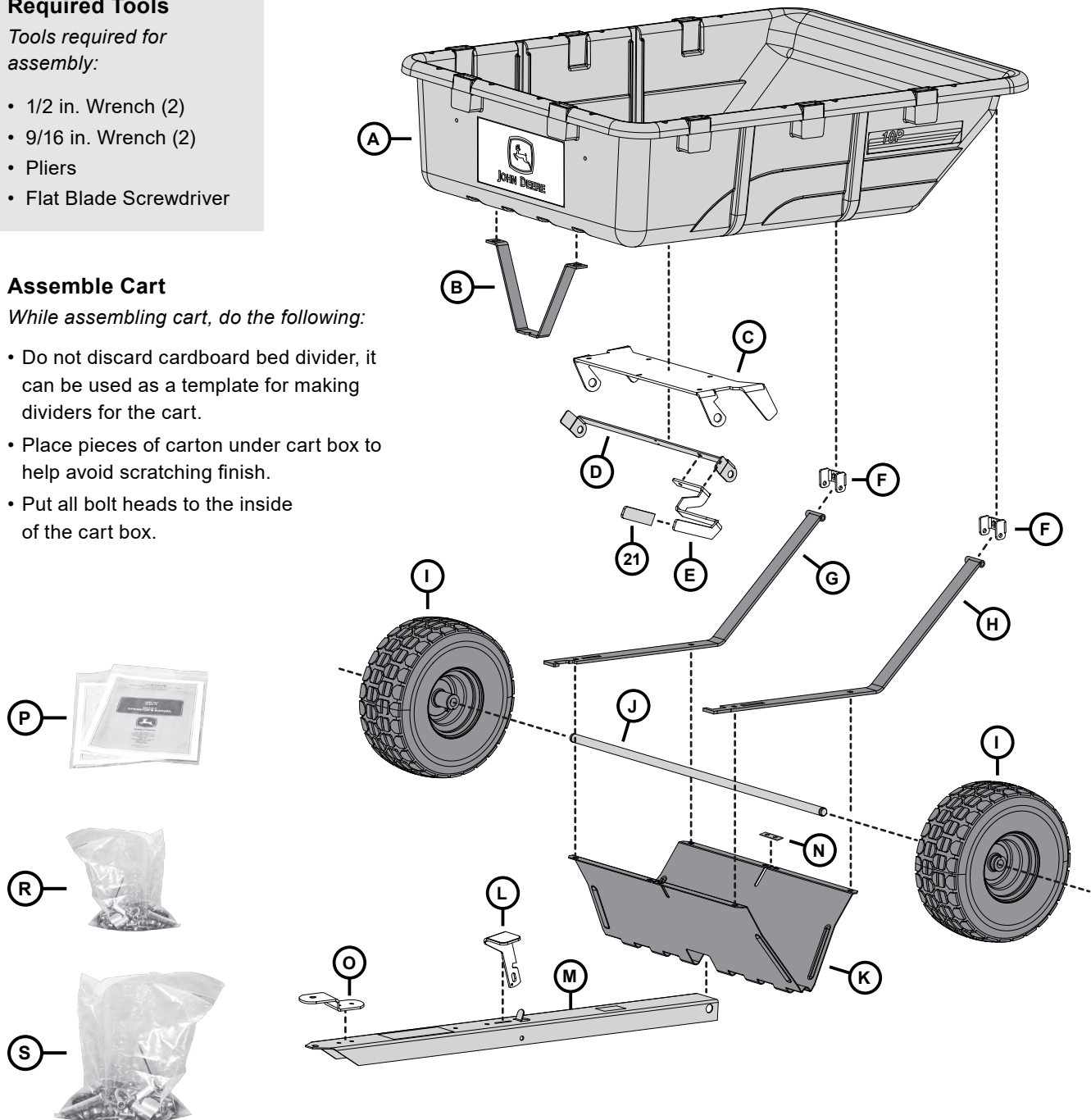
Tools required for assembly:

- 1/2 in. Wrench (2)
- 9/16 in. Wrench (2)
- Pliers
- Flat Blade Screwdriver

Assemble Cart

While assembling cart, do the following:

- Do not discard cardboard bed divider, it can be used as a template for making dividers for the cart.
- Place pieces of carton under cart box to help avoid scratching finish.
- Put all bolt heads to the inside of the cart box.



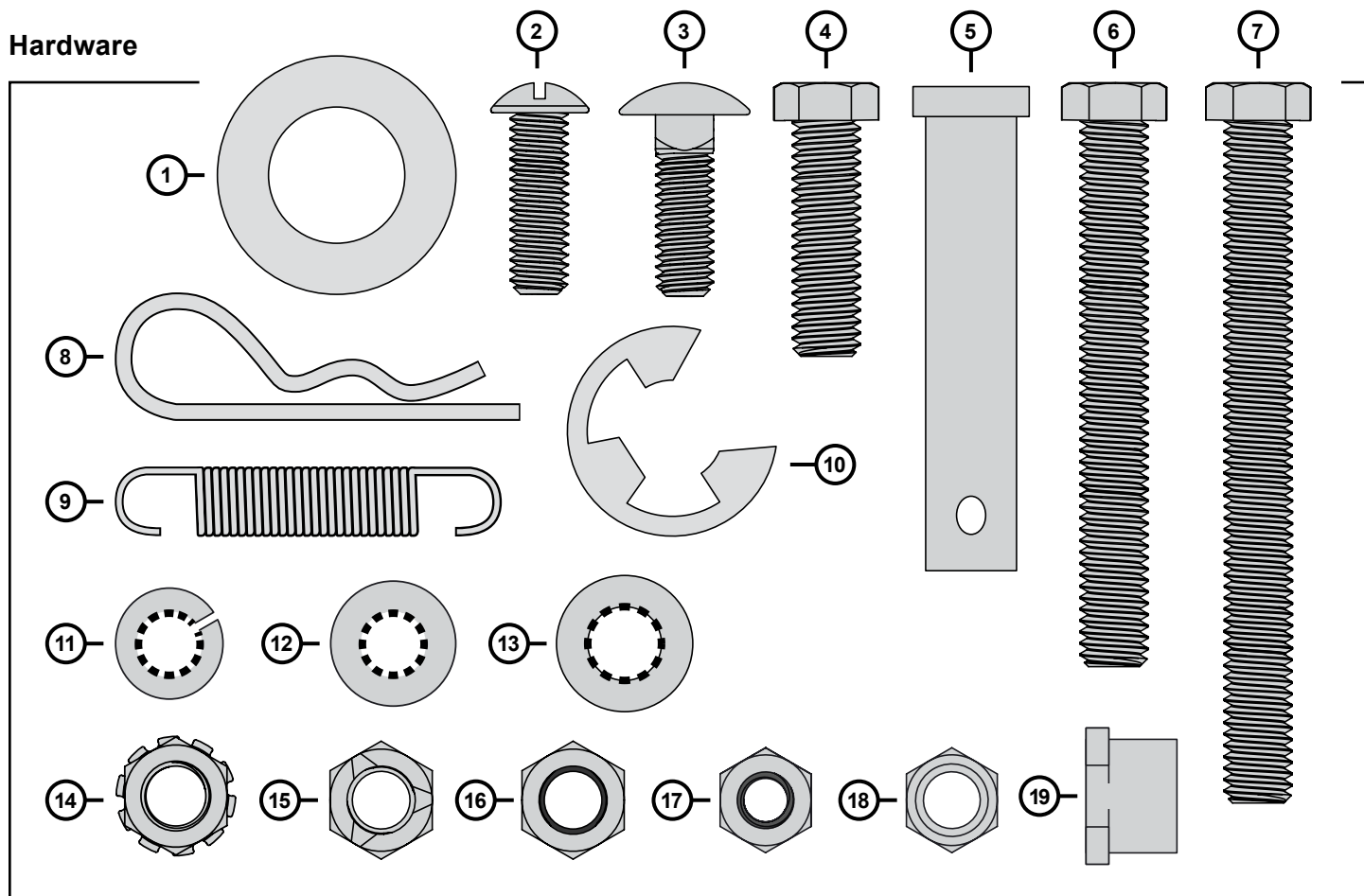
Parts

Ref.	Part Description	Qty.	Ref.	Part Description	Qty.
A.	Cart	1	H.	Pivot Arm, Left	1
C.	Rocker Base Plate	1	I.	Wheel	2
D.	Rocker Motion Bracket	1	J.	Axle	1
E.	Rocker Handle	1	K.	Axle Support	1
F.	Pivot Bracket	2	M.	Drawbar	1
G.	Pivot Arm, Right	1	N.	Support Bracket	1
R. Sm. Hardware Bag <i>(Contents Below)</i>			S. Lg. Hardware Bag <i>(Contents Below)</i>		
3.	Bolt; 5/16 x 1 in.	8	B.	Lock Bracket	1
4.	Bolt; Hex Head, 3/8 x 1 1/4 in.	2	L.	Foot Pedal	1
6.	Bolt; Hex Head, 3/8 x 3 in.	2	O.	Clevis	1
11.	Washer; Lock, 5/16 in.	6	P.	Manual	1
13.	Washer; Flat, 3/8 in.	2	20.	Spring, Latch	1
16.	Nut; Nylon Lock, 3/8 in.	4	Q. Hardware Pack <i>(Contents Below)</i>		
17.	Nut; Nylon Lock, 5/16 in.	2	1.	Bushing, 3/4 in.	4
18.	Nut; Hex Head, 5/16 in.	6	2.	Screw; Slotted Head, 5/16 x 1 in.	12
19.	Bushing; Hex Head, 3/8 x 1/2 in.	2	5.	Clevis Pin, 1/2 x 2-1/2 in.	1
21.	Grip; Flat	1	7.	Bolt; Hex Head, 3/8 x 3 3/4 in.	1
			8.	Hairpin Cotter	1
			9.	Spring	1
			10.	Retaining Ring, 3/4 in.	2
			11.	Washer; Lock, 5/16 in.	12
			12.	Washer; Flat, 5/16 in.	10
			14.	Nut; Keps w/ Star Washer, 3/8 in.	2
			15.	Nut; Hex Head Locking, 3/8 in.	1
			18.	Nut; Hex Head, 5/16 in.	12

Parts

Illustrations on this page are to-scale for easier identification of hardware during assembly.
Simply lay the hardware directly on top of the illustrations below to verify you're using the correct parts.

Hardware



1.	Bushing, 3/4 in.	4	14.	Nut; w/ Star Washer, 3/8 in.	2
2.	Screw; Slotted Head, 5/16 x 1 in.	12	15.	Nut; Hex Head Locking, 3/8 in.	1
3.	Bolt; 5/16 x 1 in.	8	16.	Nut; Nylon Lock, 3/8 in.	4
4.	Bolt; Hex Head, 3/8 x 1 1/4 in.	2	17.	Nut; Nylon Lock, 5/16 in.	2
5.	Clevis Pin, 1/2 x 2-1/2 in.	1	18.	Nut; Hex Head, 5/16 in.	16
6.	Bolt; Hex Head, 3/8 x 3 in.	2	19.	Bushing; Hex Head, 3/8 x 1/2 in.	2
7.	Bolt; Hex Head, 3/8 x 3 3/4 in.	1			
8.	Hairpin Cotter	1			
9.	Spring	1			
10.	Retaining Ring, 3/4 in.	2			
11.	Washer; Lock, 5/16 in.	18			
12.	Washer; Flat, 5/16 in.	10			
13.	Washer; Flat, 3/8 in.	2			

Not illustrated to-scale:

20.	Spring, Latch	1
-----	---------------	---

