

EDG43 INSTRUCTION MANUAL



READ ALL INSTRUCTIONS AND WARNINGS BEFORE USING THIS PRODUCT.

This manual provides important information on proper operation & maintenance. Every effort has been made to ensure the accuracy of this manual. These instructions are not meant to cover every possible condition and situation that may occur. **We reserve the right to change this product at any time without prior notice.**

IF THERE IS ANY QUESTION ABOUT A CONDITION BEING SAFE OR UNSAFE, DO NOT OPERATE THIS PRODUCT!

DO NOT RETURN THIS PRODUCT TO THE RETAILER!

If you experience a problem, have questions or need parts for this product, call Customer Service at **1-888-287-6981, Monday-Friday, 8 AM - 4 PM Central Time.** A copy of the sales receipt is required.

FOR CONSUMER USE ONLY – NOT FOR PROFESSIONAL USE.

KEEP THIS MANUAL, SALES RECEIPT & APPLICABLE WARRANTY FOR FUTURE REFERENCE.

CONTENTS

1. SAFETY	2
2. GAS & OIL MIXTURE.....	6
3. SPECIFICATION	10
4. MAINTENANCE AND STORAGE	10
5. TROUBLESHOOTING	13

SAFETY

OWNER'S RESPONSIBILITY

Accurate assembly and safe and effective use of the edger is the owner's responsibility.

Read and follow all safety instructions.

Carefully follow all assembly instructions.

Maintain the edger according to directions and schedule included in this operator's manual.

Ensure that anyone who uses the edger is familiar with all controls and safety precautions.

SPECIAL MESSAGES

Your manual contains special messages to bring attention to potential safety concerns, machine damage as well as helpful operating and servicing information. Please read all the information carefully to avoid injury and machine damage.

NOTE: General information is given throughout the manual that may help the operator in the operation or service of the machine.

IMPORTANT SAFETY PRECAUTIONS

Please read this section carefully. Operate the edger according to the safety instructions and recommendations outlined here and inserted throughout the text. Anyone who uses this edger must read the instructions and be familiar with the controls. This symbol points out important safety instructions which if not followed could endanger your personal safety. Read and follow all instructions in this manual before attempting to operate this equipment.

Keep hands, feet, hair and loose clothing away from any moving parts on engine and edger.

Do not allow children to operate this power edger. Do not allow adults to operate the edger without proper instruction.

Do not operate any power equipment under the influence of alcohol or drugs.

Keep all screws, nuts and bolts tight.

Engine should be turned off and cool, spark plug wire must be removed from spark plug before any repairs are attempted.

Temperature of muffler and nearby areas may be hot areas. Avoid these areas.

Never run engine indoors or in an enclosed area. Engine exhaust contains carbon monoxide, an odorless and deadly gas.

Do not let anyone who does not fully understand the manual thoroughly to operate the edger.

When operating the edger, make sure to keep bystanders 50 ft away.

CAUTION

CAUTION INDICATES YOU, OR YOUR EQUIPMENT, CAN BE HURT IF THE SAFETY INSTRUCTIONS THAT FOLLOW THIS WARNING ARE NOT OBEYED

IMPORTANT

INDICATES HELPFUL INFORMATION FOR PROPER ASSEMBLY, OPERATION, OR MAINTENANCE OF YOUR EQUIPMENT.

WARNING

PROP 65 WARNING: ENGINE EXHAUST FROM THIS PRODUCT CONTAINS CHEMICALS KNOWN TO THE STATE OF CALIFORNIA TO CAUSE CANCER, BIRTH DEFECTS, OR OTHER REPRODUCTIVE HARM.

ENGINE SAFETY PRECAUTIONS

WARNING: Carbon Monoxide Poisoning

All engines contain carbon monoxide in their exhaust. Carbon monoxide is a deadly, colorless, tasteless, odorless gas which may be present even if you do not smell or see any engine exhaust. Levels of carbon monoxide, which can be deadly, can be present for days in an enclosed area that has poor ventilation. Any level of carbon monoxide, if inhaled, can cause headaches, drowsiness, nausea, dizziness, confusion and eventually death. If you experience any of these symptoms, seek fresh air and medical attention immediately.

WARNING: Preventing Carbon Monoxide Poisoning

Never run engine indoors.

Never ventilate engine exhaust indoors. Carbon monoxide can reach dangerous levels.

Never run engine outdoors where exhaust fumes may be pulled into a building.

Never run engine outdoors in a poorly ventilated area where the exhaust fumes maybe trapped and not easily taken away. (Examples include: areas where hills surround your working area.)

Never run engine in an enclosed or partially enclosed area. (Examples include: buildings that are enclosed on one or more sides, under tents, carports or basements.)

Always run the engine with the exhaust and muffler pointed in the direction away from the operator.

Never point the exhaust muffler towards anyone. People should always be many feet away from the operation of the engine and its attachments.

WARNING: Gasoline Fires or handling Fuel Safely

Fuel and fuel vapors are highly flammable. Never use fuel where a spark or flame may be present. Never use fuel where a potential source of ignition could occur. (Examples include: hot water or space heaters, clothes dryer, electric motors, etc.)

Keep flames and sparks away from engine and fuel to prevent fires. Fuel fires spread very quickly and are highly explosive.

WARNING: Prevention of Gasoline Fires

Never fill your fuel tank with fuel indoors. (Examples include: basement, garage, barn, shed, house, porch, etc.)

Always fill fuel tank outside in a well ventilated area.

Never remove the fuel cap or add fuel with the engine running. Stop engine and allow to cool before filling.

Never drain fuel from engine in an enclosed area.

Always wipe up excess (spilled) fuel from engine before starting. Clean up spilled fuel immediately.

Allow spilled fuel to dry, after wiping and before starting.

Allow fuel fumes/vapors to escape from the area before starting engine.

Test the fuel cap for proper installation before starting and using engine.

Always run the engine with fuel cap properly installed on the engine and gas cap vent screw unscrewed.

Replace fuel cap that allows gas to spill or leak.

Never smoke while refilling engine fuel tank.

Prevent fire and explosion caused by static electric discharge. Use only non-metal, portable fuel containers approved by the Underwriter's Laboratory (U.L.) or the American Society for Testing & Materials (ASTM).

Do not store engine with fuel in fuel tank indoors. Fuel and fuel vapors are highly explosive.

When storing, screw down gas cap vent screw tightly.

Never pour fuel from engine fuel tank.

Never siphon fuel by mouth to drain fuel tank.

Always have an adult fill the fuel tank.

Never allow an adult or anyone under the influence of drugs or alcohol to fill engine.

Never allow children to fill the engine.

BURNS AND FIRES

The muffler, muffler guard and other parts of the engine become extremely hot during the operation of the engine. These parts remain extremely hot after the engine has stopped.

WARNING: Prevention of Burns and Fires

Never remove the muffler guard from the engine.

Never touch the muffler guard because it is extremely hot and will cause severe burns.

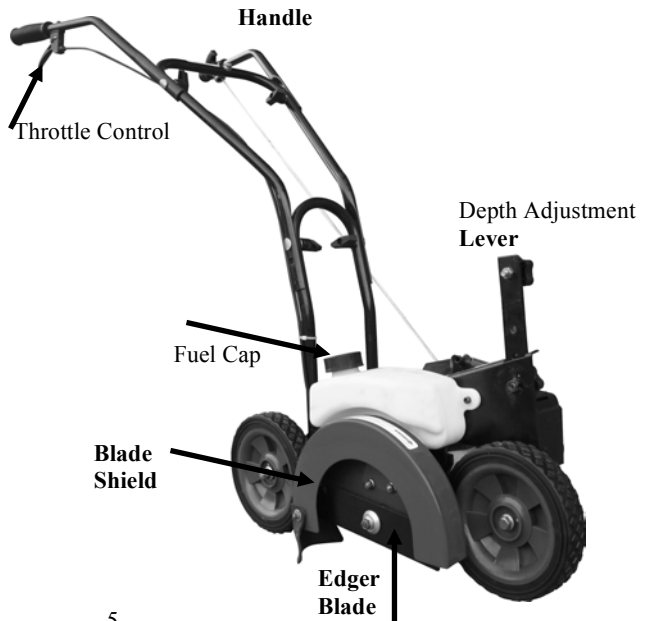
Never touch parts of the engine that become hot after operation.

Always keep materials and debris away from muffler guard and other hot parts of the engine to avoid fires.

CAUTION

HOT GASES ARE A NORMAL BY-PRODUCT OF A FUNCTIONING CATALYTIC CONVERTER.
FOLLOW ALL SAFETY INSTRUCTIONS TO PREVENT BURNS AND FIRES.

PARTS LOCATION



PREPARING ENGINE FOR STARTING

GAS AND OIL QUALITY

To operate the engine, we recommend using quality 2 cycle oil to ensure that the engine operates correctly throughout the life of the engine. Use unleaded regular gas only.

Mixture

Run edger with a GAS/OIL ratio 50:1

GAS	OIL	RATIO
1 gallon	2.5 ounces	50:1
2 gallons	5 ounces	50:1
5 gallons	13 ounces	50:1

MIXING FUEL AND FILLING GAS TANK

Mixing Fuel

Fuel must be mixed in a container outside in a well ventilated area.

Fill certified fuel container 1/4 full of recommended fuel.

Add recommended amount of 2 cycle oil.

Screw container cap on straight and tight.

Shake the container to mix fuel and oil.

Unscrew gas cap slowly to vent, add the remainder of fuel requirements.

Wipe away any spilled fuel or oil and allow to evaporate before moving or transporting.

CAUTION

DO NOT ALTER/MODIFY ENGINE OR EDGER:

AVOID INJURY! NEVER ALTER OR MODIFY THE ENGINE FROM THE FACTORY. SERIOUS INJURY OR DEATH MAY OCCUR IF ENGINE IS MODIFIED OR ALTERED.

AVOID INJURY! WHEN WORKING ON OR REPLACING PARTS FOR THE ENGINE OR EDGER YOU MUST ALWAYS DISCONNECT SPARK PLUG WIRE FROM THE SPARK PLUG AND KEEP IT AWAY FROM THE SPARK PLUG.

AVOID INJURY! ALWAYS WEAR HEARING PROTECTION WHILE OPERATION ENGINE.

AVOID INJURY! PLEASE DO NOT START YOUR EARTH EDGER UNTIL YOU HAVE READ THE PREVIOUS SECTION OF THIS MANUAL. IF YOU HAVE READ THESE, FOLLOW THE STEPS BELOW TO START YOUR EARTH EDGER.

AVOID INJURY! NEVER STORE ENGINE WITH GAS IN THE TANK INDOORS. FUEL AND FUEL VAPORS ARE HIGHLY FLAMMABLE.

AVOID INJURY! NEVER MIX FUEL AND OIL DIRECTLY IN ENGINE GAS TANK. USE ONLY NON-METAL, PORTABLE FUEL CONTAINERS APPROVED BY THE UNDERWRITER'S LABORATORY (U.L.) OR THE AMERICAN SOCIETY FOR TESTING & MATERIALS (ASTM).

AVOID INJURY! AN ADULT MUST ALWAYS HANDLE AND FILL THE ENGINE WITH FUEL.

AVOID INJURY! ALWAYS HANDLE FUEL IN A WELL VENTILATED AREA, OUTDOORS, AWAY FROM FLAMES OR SPARKS.

IMPORTANT

THIS ENGINE USED A GAS/OIL MIXTURE. DO NOT RUN ON STRAIGHT GAS ONLY, ENGINE DAMAGE WILL RESULT.

Filling Gas Tank

Shut-off engine and allow engine to completely cool before refilling the gas tank.

Move to a well ventilated area, outdoors, away from flames and sparks.

Clean debris from area around the gas cap.

Loosen gas cap slowly. Carefully add fuel without spilling.

Do not fill gas tank completely full, allow space for fuel to expand.

Immediately replace gas cap and tighten. Wipe off spilled fuel and allow to dry before starting engine.

Never run engine indoors. Exhaust fumes are deadly.

USING THE SCREW TYPE, MANUAL VENTING GAS CAP

Your edger is equipped with a screw type, manual venting gas cap.

Before starting the engine, turn the screw in the top of the gas cap all the way open (counterclockwise) to its venting position. To ensure that gas will not spill during use, check that the gas cap is screwed on tightly and the gas cap screw is in the venting position.

After using the edger and before putting away or transporting it in a vehicle, screw the gas cap screw on (clockwise) tightly. This will prevent gas from leaking during storage. The gas cap will not leak gas during storage if the gas cap is tight and the screw at the top is tight.

NOTE: When storing unit in an upright position for pro-longed periods of time in warm weather, vent gas cap to prevent gas from leaking from carburetor.

CAUTION

AVOID INJURY! ALWAYS HANDLE FUEL IN A WELL VENTILATED AREA, OUTDOORS, AWAY FROM FLAMES OR SPARKS.

AVOID INJURY! DO NOT START ENGINE IF FUEL IS SPILLED. WIPE OFF EXCESS FUEL AND ALLOW TO DRY. REMOVE ENGINE FROM AREA A TO AVOID SPARKS.

STARTING AND STOPPING ENGINE

Move engine to a well ventilated area, outdoors, to prevent carbon monoxide poisoning. Move to an area away from flames or sparks, to avoid ignition of vapors if present. Remove all debris from air cleaner holes and gas cap to ensure proper air flow.

COLD ENGINE START

Starting engine for first time or after engine has cooled off after running out of fuel.

Open gas cap vent screw all the way(counterclockwise).

Move choke lever to RUN or OFF position.

NOTE: Choke must be in the RUN/OFF position when pushing or using the primer bulb

Prime unit until primer hose is filled with gas.

NOTE: When using the primer bulb, allow the bulb to return completely to its original position between pushes

Move choke lever to CHOKE or ON position.

NOTE: CHOKE position is defined by moving the choke lever as far to the ON position as possible.

Push rocker switch to the ON position.

Squeeze throttle control wide open with right hand. Grasp starter handle with left hand and pull out slowly, until it pulls slightly harder. Without letting starter handle retract, pull rope with a rapid full arm stroke. Let it return to its original position very slowly until unit fires or runs. Repeat this step every time the starter rope is pulled.

NOTE: If engine fails to start after 5-6 pulls, push primer 1 time and pull starter rope.

After engine starts running, move choke lever to HALF CHOKE position until unit runs smoothly **NOTE:** *HALF CHOKE is defined when the choke lever is between CHOKE and RUN or ON and OFF.*

Move choke lever to RUN or OFF position and move throttle to desired speed.

NOTE: Run at full throttle when possible. Do not let unit idle for extended periods.

To stop engine, push rocker switch to OFF position.

WARM ENGINE START:

Open gas cap vent screw all the way(counterclockwise).

Move choke lever to CHOKE or ON position

NOTE: CHOKE position is defined by moving the choke lever as far to the ON position as possible.

CAUTION

AVOID INJURY! ALWAYS HANDLE FUEL IN A WELL VENTILATED AREA, OUTDOORS, AWAY FROM ALAMES OR SPARKS.

AVOID INJURY! DO NOT START ENGINE IF FUEL IS SPILLED. WIPE OFF EXCESS FUEL AND ALLOW TO DRY. REMOVE ENGINE FROM AREA TO AVOID SPARKS.

AVOID INJURY! IF EDGER IS MOUNTED TO ENGINE, ALL SAFETY GUARDS MUST BE SECURELY ON TO AVOID SERIOUS INJURY.

AVOID INJURY! STARTER ROPE CAN CAUSE AN UNANTICIPATED JERK TOWARDS ENGINE. PLEASE FOLLOW INSTRUCTIONS TO AVOID INJURY.

AVOID INJURY! NEVER LEAVE ENGINE RUNNING WHILE UNATTENDED. TURN OFF AFTER EVERY USE

AVOID INJURY! NEVER CARRY POWERHEAD AND EDGER BETWEEN HOLES WHILE ENGINE IS RUNNING.

WARNING

AVOID INJURY! MAKE SURE THE UNIT IS IN A STABLE POSITION BEFORE PULLING THE STARTER HANDLE.

AVOID INJURY! WHEN THE UNIT STARTS TO FIRE OR RUN, RELEASE THE THROTTLE CONTROL MOMENTARILY WITH YOUR RIGHT HAND AND RETURN YOUR LEFT HAND TO THE HANDLEBAR POSITION TO MAINTAIN CONTROL AND STABILITY OF THE UNIT WITH BOTH HANDS.

HOT ENGINE START:

Open gas cap vent screw all the way (counterclockwise).

Continue with Cold Engine Starting.

If engine does not fire, refer to Step 2 of Warm Engine Starting.

DO NOT attempt to start engine in the following ways:

DO NOT use starting fluid DO NOT spray flammable liquids or vapors into air cleaner, carburetor or spark plug chamber.

DO NOT remove spark plug and pull on starter rope. Flammable fuel can spray out & ignite from a spark from spark plug.

SPECIFICATION

Subject to change without prior notice.

Engine Type	Forced Air-cooled 2-Stroke
Displacement	43cc
Max. Output	1.1kW
Fuel	Gas/Oil Mixture (50:1)
Fuel Tank Capacity	27 ounces
Ignition System	C.D.I.
Starting System	Recoil
Gear Ratio	5:1
Max. Engine Speed	8500 r/min
Clutch Engine Speed	3700 r/min
Blade Speed	1200-1700 RPM
Spark plug type/ model	BM6A (Champion CJ8)

MAINTENANCE AND STORAGE**Air Filter**

Never run engine without air cleaner properly installed. Added wear and engine failure may occur if air cleaner is not installed. Service air cleaner every 3 months or after 20 hours of operation. Clean filter daily in extremely dusty conditions

Steps for Cleaning Air Filter

Wash in warm water with mild soap until dirt and debris are removed. Press filter when washing, do not twist.

Rinse in warm water until soap and dirt are removed.

Dry filter by wrapping in a clean cloth and pressing filter until it is dry.

Apply oil to the entire filter.

Remove excess oil.

Attach the filter and air cleaner cover to the engine.

CAUTION

AVOID INJURY! ENGINE MUST BE TURNED OFF AND COOL, AND SPARK PLUG WIRE MUST BE REMOVED FROM SPARK PLUG BEFORE CHECKING AND ADJUSTING ENGINE OR EQUIPMENT.

AVOID INJURY! TEMPERATURE OF MUFFLER AND NEARBY AREAS MAY EXCEED 150F DEGREES (65C) AVOID THESE AREAS.

AVOID INJURY! CHECK EDGER OFTEN FOR LOSSE NUTS AND BOLTS. KEEP THESE ITEMS TIGHTENED.

AVOID INJURY! NEVER STORE ENGINE WITH FUEL IN THE TANK INSIDE A BUILDING. POTENTIAL SPARKS MAY BE PRESENT FOR IGNITION OF FUEL AND FUEL VAPORS.

AVOID INJURY! AN ADULT MUST ALWAYS DO MAINTENANCE AND REPAIR ON ENGINE AND EDGER.

AVOID INJURY! ENGINE MUST BE SHUT-OFF, COOL, AND SPARK PLUG WIRE REMOVED BEFORE ANY REPAIR OR MAINTENANCE CAN BE DONE.

Spark Plug

The recommended spark plug is a BM6A which cross references to a Champion CJ8.

Check spark plug every 50 operating hours.

Disconnect the spark plug cap, and clean any debris from around the spark plug area.

Remove spark plug and replace if any of the following occur; pitted electrodes, burned electrodes, cracked porcelain, or deposits around electrodes.

After analysis, seat spark plug and tighten with spark plug wrench.

Reinstall original spark plug, tighten additional 1/2 turn.

Installing new spark plug, adjust spark plug gap to .030" and tighten additional 1/8–1/4 turn.

NOTE: Loose spark plug may overheat and damage engine. Over tightened spark plug may damage threads in the cylinder head.

Carburetor

Never tamper with factory setting of the carburetor.

TRANSPORTING YOUR EDGER

Never transport engine inside an enclosed space or vehicle. Fuel or fuel vapors may ignite causing serious injury or death.

If fuel is present in the fuel tank, transport it in an open vehicle in an upright position.

If an enclosed vehicle must be used, remove gas into an approved red fuel container. DO NOT siphon by mouth.

Run engine to use up the fuel in the carburetor and fuel tank. Always run engine in a well ventilated area.

Wipe away any spilled fuel from engine and earth edger. Allow to dry.

LONG TERM STORAGE

If your edger will not be used for more than one month, prepare it for long term storage.

Steps for Long Term Storage

Add fuel stabilizer according to manufacturer's instructions.

Run engine for 10-15 minutes to ensure that the stabilizer reaches the carburetor.

Remove the remainder of the fuel from the gas tank into an approved fuel container.

Remove edger from power head and apply a thin layer of grease to the output shaft.

Store edger and power head (engine) in a vertical position.

Remove all debris from edger and power head (engine).

CAUTION

AVOID INJURY! TO AVOID INJURY OR DEATH, NEVER SIPHON FUEL BY MOUTH.

AVOID INJURY! NEVER STORE EARTH EDGER WITH FUEL IN THE GAS TANK INSIDE AN ENCLOSED AREA OR BUILDING.

TO PREVENT ACCIDENTAL STARTING:

AVOID INJURY! ENGINE MUST BE TURNED OFF AND COOL, AND SPARK PLUG WIRE MUST BE REMOVED FROM SPARK PLUG BEFORE CHECKING AND ADJUSTING ENGINE OR EQUIPMENT.

AVOID INJURY! AN ADULT MUST ALWAYS DO MAINTENANCE AND REPAIR ON ENGINE AND EDGER.

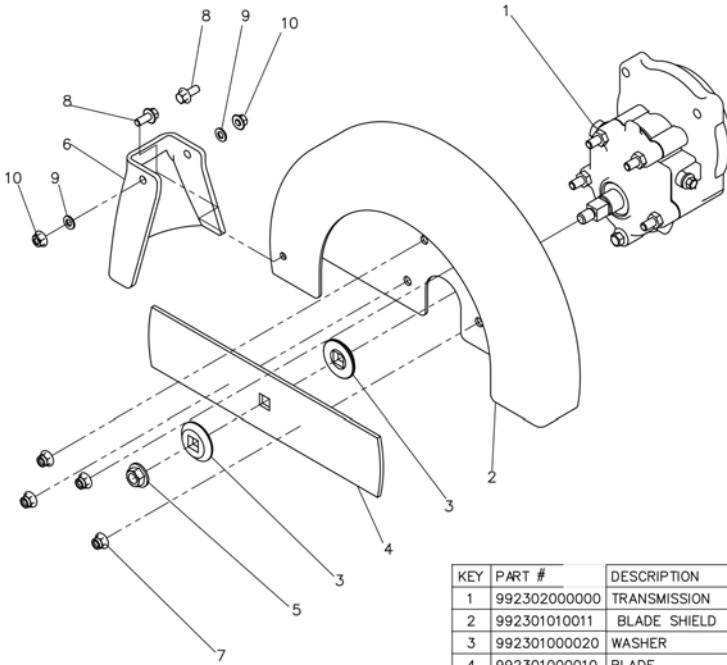
AVOID INJURY! ENGINE MUST BE SHUT-OFF, COOL, AND SPARK PLUG WIRE REMOVED BEFORE ANY REPAIR OR MAINTENANCE CAN BE DONE.

TROUBLESHOOTING

PROBLEM	POSSIBLECAUSE	REMEDY/ ACTION
Engine will not start	1. Power switch off	1. Flip switch to ON position
	2. Spark plug wire disconnected	2. Connect spark plug wire to spark plug
	3. Out of fuel	3. Refuel
	4. Spark plug wet, faulty or improperly gapped	4. Clean, replace or gap spark plug
	5. Throttle control not held wide open	5. Hold throttle control wide open then pull recoil handle
	6. Fuel line hose not positioned in bottom of gas tank	6. Push fuel line down into fuel in gas tank
Engine runs rough, floods	1. Dirty air filter	1. Clean or replace air filter
	2. Choke partially engaged	2. Turn off choke
	3. Carburetor out of adjustment	3. Call customer service
Edger cuts slowly	1. Dull blade	1. Buy new blade, or have blade sharpened at factory
	2. Damaged fish tail point	2. Replace fish tail point

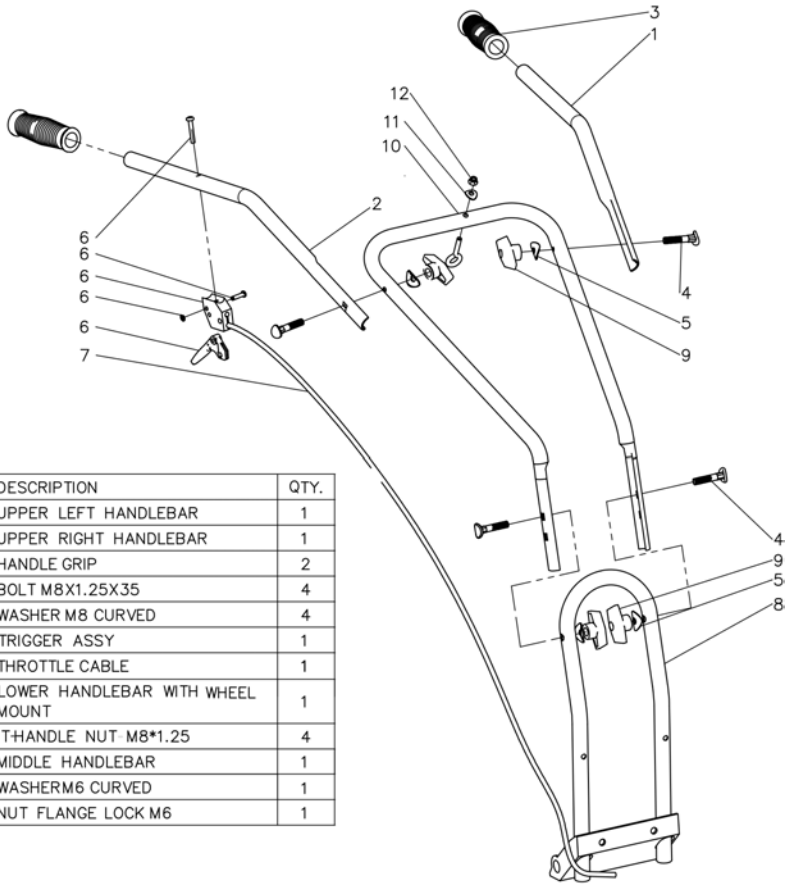
PROBLEM	POSSIBLE CAUSE	REMEDY/ ACTION
Engine is hard to start	1. Stale fuel	1. Drain old fuel and replace with fresh. Use gas stabilizer at end of season
	2. Spark plug wire loose	2. Make sure spark wire is securely attached to spark plug
	3. Dirty carburetor	3. Clean carburetor, use gas stabilizer, new gas can
	4. Throttle control not held wide open	4. Prime unit 3 more times, then hold throttle wide open when pulling recoil handle
Engine misses or lacks power	1. Clogged gas tank	1. Remove and clean
	2. Clogged air filter	2. Clean or replace
	3. Carburetor out of adjustment or bad	3. Call customer service
	4. Spark plug wet, faulty or improperly gapped	4. Clean, replace or gap spark plug
Engine runs, then quits	1. Gas cap not venting	1. Open manual venting gas cap screw all the way open (counter clockwise)
	2. Plugged fuel filter	2. Clean or replace
	3. Carburetor out of adjustment or bad	3. Call customer service
Engine revs too high	1. Carburetor out of adjustment	1. Call customer service
Edger turns at idle	1. Idle speed too high	1. Adjust idle speed lower
	2. Broken clutch spring	2. Replace spring
Edger turns, but has no power	1. Choke on	1. Turn off choke after engine is running
	2. Carburetor out of adjustment	2. Call customer service
	3. Broken transmission	3. Call customer service
	4. Worn clutch shoes	4. Replace clutch shoes and spring
	5. Worn engine lower seat	5. Call customer service
Edger jumps	1. Blade damaged	1. Replace with new blade

PARTS DIAGRAM



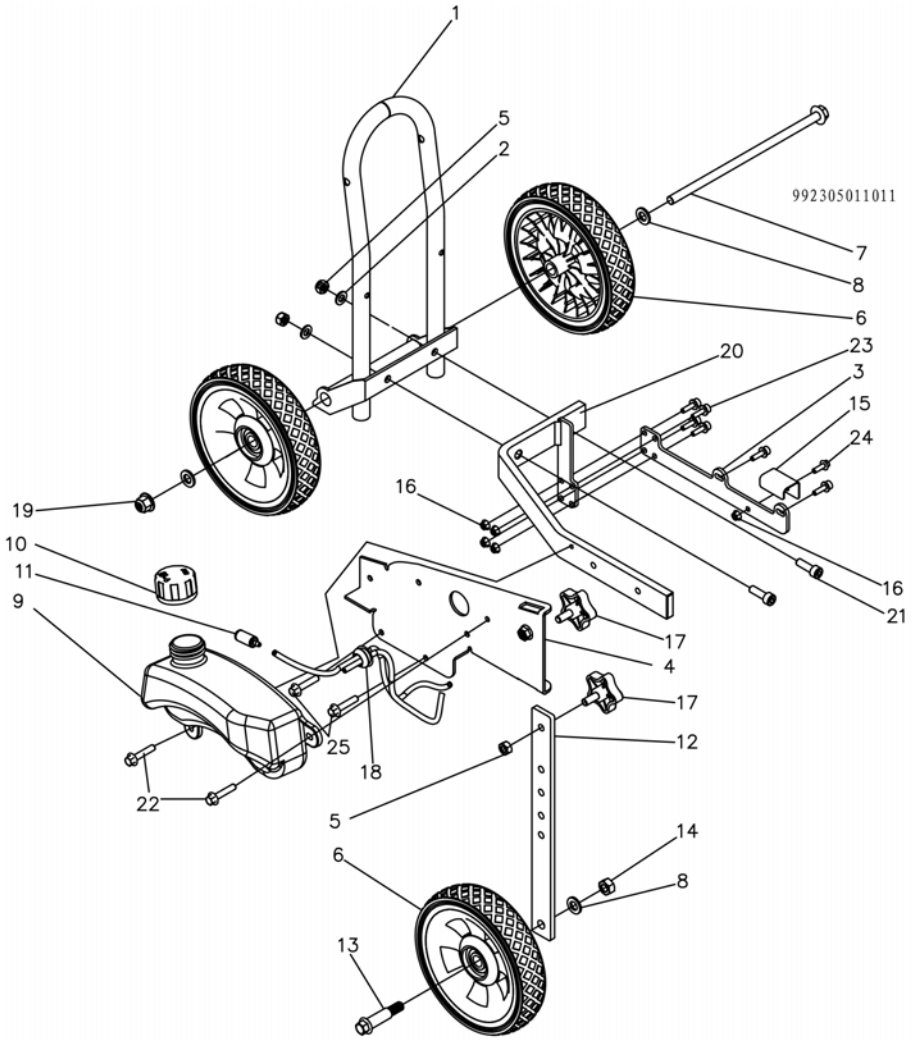
KEY	PART #	DESCRIPTION	QTY.
1	992302000000	TRANSMISSION	1
2	992301010011	BLADE SHIELD	1
3	992301000020	WASHER	2
4	992301000010	BLADE	1
5	001280008001	NUT M8	1
6	992301010020	RUBBER SHIELD DEBRIS	1
7	001410006000	NUT FLANGE LOCK M6	4
8	000330005012	BOLT M5X0.8X12	2
9	003040005000	FLAT WASHER M5 53X10X1.0	2
10	001410005000	NUT M5X0.8	2

PARTS DIAGRAM



KEY	PART #	DESCRIPTION	QTY.
1	992501010010	UPPER LEFT HANDLEBAR	1
2	992501020010	UPPER RIGHT HANDLEBAR	1
3	992501010020	HANDLE GRIP	2
4	992501010020	BOLT M8X1.25X35	4
5	992501000030	WASHER M8 CURVED	4
6	994319022000	TRIGGER ASSY	1
7	992303010000	THROTTLE CABLE	1
8	992304000030	LOWER HANDLEBAR WITH WHEEL MOUNT	1
9	992501000040	THANDLE NUT M8*1.25	4
10	992303000010	MIDDLE HANDLEBAR	1
11	992301000030	WASHERM6 CURVED	1
12	001410006000	NUT FLANGE LOCK M6	1

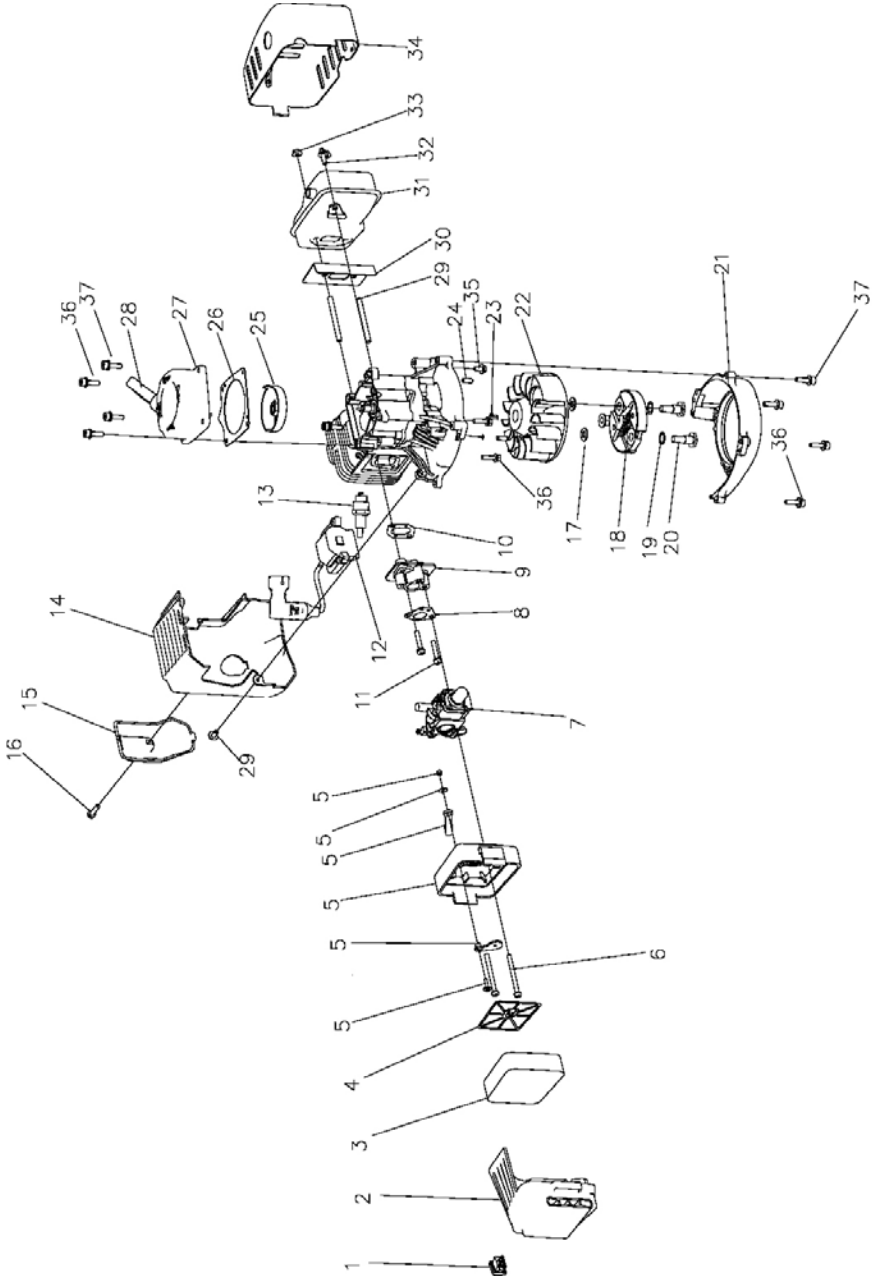
PARTS DIAGRAM



PARTS LIST

KEY	PART#	DESCRIPTION	QTY.
1	992304000030	LOWER HANDLEBAR WITH WHEEL MOUNT	1
2	003020008000	FLAT WASHER M8 8.4*16*1.6	2
3	992304000010	LOWER ENGINE MOUNT	1
4	992304000021	WHEEL BRACKET	1
5	001230008000	NUT M8*1.25	3
6	992504000010	WHEEL	3
7	000330010236	BOLT M10*1.26*236	1
8	003020010000	FLAT WASHER M10 10.5*20*2	3
9	992305011011	FUEL TANK	1
10	144113010020	GAS TANK CAP	1
11	142113011040	FUEL FILTER	1
12	992304010010	HEIGHT ADUSTER BAR	1
13	992304010030	BOLT M10*55	1
14	001230010000	NUT M10	1
15	992304000050	SHIELD DEBRIS	1
16	001410005000	NUT M5*0.8	8
17	992304010020	KNOB M8*16	2
18	992305011500	FUEL LINES SET	1
19	001420010000	NUT M10	1
20	992304000042	FRAME SET	1
21	002040008025	BOLT M8*1.25*25	2
22	000330006018	BOLT M6*1.0*18	2
23	007460005020	BOLT M5*20	6
24	007460005016	BOLT M5*0.8*16	1
25	000330006040	BOLT M6*1.0*40	2

PARTS DIAGRAM



PARTS LIST

KEY	PART#	DESCRIPTION	QTY.
1	142110000020	ROCKER SWITCH	1
2	144108010014	AIR FILTER COVER	1
3	144108010030	AIR FILTER ELEMENT	1
4	144108010040	REINFORCEMENT PLATE	1
5	144108110014	AIR FILTER BASE ASSY	1
6	007080005052	BOLT M5X52MM	2
7	144109010003	CARBURETOR	1
8	144109000030	GASKET	1
9	144109000010	INTAKE WINDPIPE	1
10	144109000020	GASKET	1
11	007460005028	BOLT M5X28MM	2
12	144110010005	IGNITION COIL	1
13	142110000040	SPARK PLUG (BM6A)	1
14	144118000011	SHROUD	1
15	144118000021	ENGINE SHROUD COVER	1
16	007460005020	BOLT M5X20MM	1
17	003020008000	WASHER	1
18	142110030000	CLUTCH ASSEMBLY	1
19	142110050050	SPRING WASHER	1
20	142110000030	BOLT	1
21	144102000010	ENGINE MOUNTING COVER	1
22	144110000010	FLYWHEEL	1
23	144103000101	KEY	1
24	005030205125	LOCATING PIN	2
25	142106000010	RECOILSTARTER CUP	1
26	142106000020	RECOIL SHIM	1
27	144106010007	RECOIL STARTER ASSY	1
28	144106010050	HANDLE	1
29	144107000030	STUD BOLT M6 X 62MM	2
30	144107000010	GASKET	1
31	144107010003	MUFFLER	1
32	007460005012	BOLT M5 X 12MM	1
33	001280006000	FLANGE NUT M6	2
34	144107000025	MUFFLER COVER	1

KEY	PART#	DESCRIPTION	QTY.
35	007460005012	BOLT M5X0.BX12	1
36	007460005020	BOLT M5X20MM	7
37	007460005028	BOLT M5X28	3

EMISSION CONTROL SYSTEM WARRANTY

Buffalo Corporation

Your Warranty Rights and Obligations:

The California Air Resources Board, U.S. EPA and Buffalo Corp are pleased to explain the Emission Control System Warranty on your 2017 model year outdoor power equipment engine.

California

In California, new spark-ignited small off-road equipment engines must be designed, built and equipped to meet the State's stringent anti-smog standards.

Other States, U.S. Territories

In other areas of the United States, your engine must be designed, built and equipped to meet the U.S. EPA emission standards for spark-ignited engines at or below 19 kilowatts.

All of the United States

Buffalo Corp must warrant the emission control system on your power equipment engine for the periods of time listed below provided there has been no abuse, neglect or improper maintenance of your power equipment engine. Where a warrantable condition exists, Buffalo Corp will repair your power equipment engine at no cost to you including diagnosis, parts and labor.

Your emission control system may include parts such as: carburetors or fuel injection system, ignition system, catalytic converters, fuel tanks, valves, filters, clamps, connectors, and other associated components. Also, included may be hoses, belts, connectors, sensors, and other emission-related assemblies.

Manufacturer's Warranty Coverage:

The emission control system is warranted for two years. If any emissions-related part on your engine is defective, the part will be repaired or replaced by Buffalo Corp.

Owner's Warranty Responsibility

As the power equipment engine owner, you are responsible for the performance of the required maintenance listed in your owner's manual. Buffalo Corp recommends that you retain all receipts covering maintenance on your power equipment engine, but Buffalo Corp can not deny warranty solely for the lack of receipts or for your failure to ensure the performance of all scheduled maintenance.

As the power equipment engine owner, you should however be aware that Buffalo Corp may deny your warranty coverage if your power equipment engine or a part has failed due to abuse, neglect, improper maintenance or unapproved modifications.

You are responsible for presenting your power equipment engine to distribution center or service center authorized by Buffalo Corp as soon as the problem exists. The warranty repairs should be completed in a reasonable amount of time, not to exceed 30 days.

If you have any questions regarding your warranty rights and responsibilities, you should contact Buffalo Corp customer service representative at 1-636-532-9888 or email customer service: CS @ BUFFALOTOOLS.COM .

DEFECTS Warranty Coverage:

Adopted by the Air Resources Board, Buffalo Corp warrants to the ultimate purchaser and each subsequent purchaser that the small off-road engine (SORE) (1) has been designed, built and equipped so as to conform with all applicable regulation; and (2) is free from defects in materials and workmanship that cause the failure of a warranted part to conform with those regulations as may be applicable to the terms and conditions stated below.

(a) The warranty period begins on the date the engines is delivered to an ultimate purchaser or first placed into service. The warranty period is two years.

(b) Subject to certain conditions and exclusions as stated below, the warranty on emissions related parts is as follows:

(1) Any warranted part that is not scheduled for replacement as required maintenance in your Owner's Manual is warranted for the warranty period stated above. If the part fails during the period of warranty coverage, the part will be repaired or replace by Buffalo Corp according to Subsection (4) below. Any such part repaired or replaced under warranty will be warranted for the remainder of the period.

(2) Any warranty part that is scheduled only for regular inspection in your Owner's Manual is warranted

for warranty period stated above. Any such part repaired or replaced under warranty will be warranted for the remaining warranty period.

(3) Any warranted part that is scheduled for replacement as required maintenance in your Owner's Manual is warranted for the period of time before the first scheduled replacement date for that part. If the part fails before the first scheduled replacement, the part will be repaired or replaced by Buffalo Corp according to the Subject (4) below. Any such part repaired or replaced under warranty will be warranted for the remainder of the period prior to the first scheduled replacement point for the part.

(4) Repair or replacement of any warranted part under the warranty provisions herein must be performed at a warranty station at no charge to the owner.

(5) Notwithstanding the provisions herein, warranty services or repair will be provided at all of our distribution centers that are franchised to service the subject engines.

(6) The engine owner must not be charged for diagnostic labor that leads to the determination that a warranted part is in fact defective, provided that such diagnostic work is performed at a warranty station.

(7) Buffalo Corp is liable for damages to other engine components proximately caused by a failure under warranty of any warranted part.

(8) Throughout the engine warranty period stated above, Buffalo Corp will maintain a supply of warranted parts sufficient to meet the expected demand for such parts.

(9) Any replacement part may be used in the performance of any warranty maintenance or repairs and must be provided without charge to the owner. Such use will not reduce the warranty obligations of Buffalo Corp.

(10) Add-on or modified parts that are not exempted by the Air Resources Board may not be used. The use of any non-exempted add-on or modified parts by the ultimate purchaser will be grounds for disallowing a warranty claims. Buffalo Corp will not be liable to warrant failures of warranted parts caused by the use of a non-exempted add-on or modified part.

(11) The manufacturer issuing the warranty shall provide any documents that describe that manufacturer's warranty procedures or policies within five working days of request by the Air Resources Board.

EMISSION WARRANTY PARTS LIST

(1) Fuel Metering System:

- (a) Gasoline carburetor assembly and its internal components
- (b) Carburetor gaskets
- (c) Fuel line
- (d) Clamps
- (e) Fuel tank
- (f) Fuel line fittings
- (g) Pressure regulator (if equipped)
- (h) Mixer assembly and its internal components (if equipped)

(2) Air induction system including:

- (a) Intake pipe/manifold
- (b) Air cleaner

(3) Ignition system including:

- (a) Spark plug
- (b) Ignition coil

(5) Crankcase breather assembly including

(a) Breather connection tube

(4) Catalytic muffler assembly including:

(6) Fuel tank evaporative emissions control system including:

(a) Muffler gasket

- (a) purge valves
- (b) Carbon canister
- (c) canister Mounting Brackets
- (d) Fuel Cap
- (e) Fuel Tank

(7) Miscellaneous items used in above systems including:

201702

(a) Switches

(b) Hoses, belts connectors, assemblies

(8) Air injection system

- (a) Pulse valve