

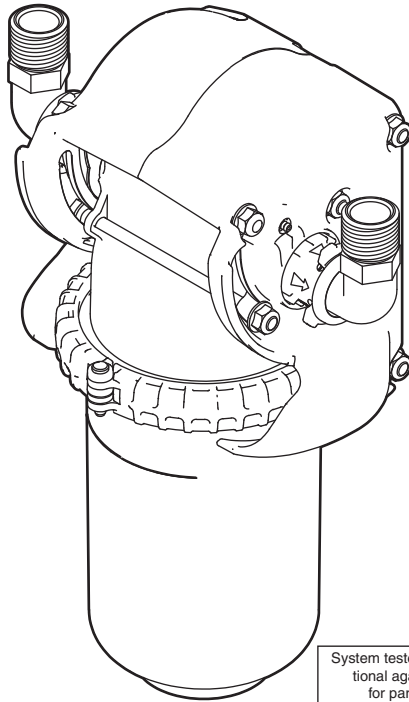


GLACIER BAY®

Item #1000 991 173
US Model #HDGEFS4

USE AND CARE GUIDE

PREMIUM HOUSEHOLD WATER FILTRATION SYSTEM



System tested and certified by NSF International against NSF/ANSI Standard 42 for particulate class III reduction.

NSF

Questions, problems, missing parts? Before returning to the store,
call Glacier Bay Customer Service
7 a.m. - 6 p.m., CST Monday - Friday

1-800-247-1087

HOMEDEPOT.COM/GLACIERBAY

201-8401460 (rev 00)

THANK YOU

We appreciate the trust and confidence you have placed in Glacier Bay through the purchase of this filtration system. We strive to continually create quality products designed to enhance your home. Visit us online to see our full line of products available for your home improvement needs. Thank you for choosing Glacier Bay!

Table of Contents

Safety Information.....	2
Warranty.....	3
Pre-Installation	4
Pre-Installation Inspection	4
Installation Location	4
Dimensions	5
Specifications	5
Performance Claims	5
Tools Required	6

Package Contents	6
Installation	7
Filter Cartridges	9
Filter Cartridge Life.....	9
Filter Cartridge Replacement	9
Troubleshooting.....	11
Replacement Parts.....	11

Safety Information

Read all instructions before installing and using your home water filtration system. Follow all steps exactly to correctly install. Reading this manual will also help you to get all the benefits from the filtration system.

This system has been tested according to NSF/ANSI Standard 42 for particulate class III reduction (5 micron to less than 15 micron). The concentration of the indicated substance in water entering the system was reduced to a concentration less than or equal to the permissible limit for water leaving the system, as specified in NSF/ANSI 42. The testing was performed using spiked tap water at a flow rate of 4 GPM (15.2 L/min.), pH of 7.5 ± 0.5 , pressure of 60 PSIG, and temperature of $68 \pm 5^\circ\text{F}$.

All plumbing must be completed in accordance with national, state and local plumbing codes. Local code information can be obtained at your local public works department. In Massachusetts, plumbing code 248 CMR 3.00 and 10.00 shall be adhered to. Consult with your licensed plumber.

To condition all water in the home, install the filtration system close to the water supply inlet, and before all other plumbing connections, except outside water pipes.

supply pipe to the filtration system.

NOTICE: All plumbing codes must be completed in accordance with national, state, and local plumbing codes. Local code information can be obtained at your local public works department.

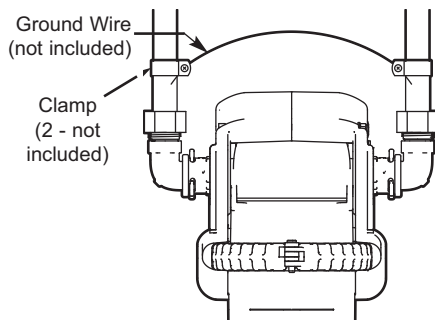
NOTICE: In the state of Massachusetts: The Commonwealth of Massachusetts plumbing code 248-CMR shall be adhered to. A licensed plumber shall be used for this installation.

GROUNDING INFORMATION (METAL PLUMBING INSTALLATIONS)



WARNING: ELECTRICAL SHOCK HAZARD. Prior to installation on metallic plumbing, securely install two grounding clamps and a #4 copper wire per installation instructions. Failure to follow these instructions can result in death or electrical shock.

The house main incoming water pipe is often used to ground electrical outlets in the home. Grounding protects you from electrical shock. Installing the water filtration system may break this ground. Before beginning installation, purchase and securely install two grounding clamps and a #4 copper wire across the location where the filter will be, tightly clamping it at both ends, as shown below.



WARNING: Do not use with water that is microbiologically unsafe or of unknown quality without adequate disinfection before or after the system.



CAUTION: Do not install the filtration system outside, or in extreme hot or cold temperatures. Temperature of the water supply to the filtration system must be between 40°F and 100°F . Do not install on a hot water line.



CAUTION: Avoid installing in direct sunlight. Excessive sun heat may cause distortion or other damage to nonmetallic parts.

NOTICE: This filtration system works on water pressures of 30 psi (minimum) to 100 psi (maximum). If your house water pressure is over the maximum, install a pressure reducing valve in the water

Warranty

Glacier Bay Water Filtration Systems- Warranty

Glacier Bay Water Filtration Systems are manufactured under the highest standards of quality and workmanship. Glacier Bay Water Filtration Systems warrants to the original purchaser that this system will be leak and drip free during normal domestic use for a period of one (1) year from date of purchase. If this system should ever develop a leak or drip Glacier Bay Water Filtration Systems will free of charge provide the parts necessary to put the system back in good working condition. A replacement for any defective part will be supplied free of charge for installation by the purchaser. Defects or damage caused by use of other than authorized parts are not covered by this warranty. This warranty shall be effective from date of purchase as shown on purchaser's receipt. Glacier Bay Water Filtration Systems shall be installed per the manufacturer's installation instructions and specifications. Some states do not allow limitations on how long a warranty lasts, so the above limitation may not apply to you. This warranty is valid for the original purchaser only and excludes industrial, commercial, or business use of the product, product misuse, and product damage due to installation error, whether performed by a contractor, service company, or yourself. Glacier Bay Water Filtration Systems will not be responsible for labor charges or for damage incurred during installation, repair or replacement, nor for incidental or consequential damages. Some states, provinces and nations do not allow the exclusion or limitation of incidental or consequential damages, so the above exclusions or limitations may not apply to you. Glacier Bay Water Filtration Systems will advise you of the procedure to follow in making warranty claims.

Simply write to Glacier Bay Water Filtration Systems at the address below. Explain the defect and include proof of purchase and you name, address and telephone number or you can also call us at 1-800-247-1087.

U.S.A

Glacier Bay Water Filtration Systems
2455 Paces Ferry Road, N.W.
Atlanta, GA 30339-4024

Canada

Glacier Bay Water Filtration Systems
900-1 Concorde Gate
Toronto, ON M3C 4H9

Pre-Installation

PRE-INSTALLATION INSPECTION

Thoroughly check the water filtration system for possible shipping damage and parts loss. Also inspect and note any damage to the shipping carton. Remove and discard (or recycle) all packing materials. To avoid loss of small parts, we suggest you keep the small parts in the parts bag until you are ready to use them.

INSTALLATION LOCATION



WARNING: Electrical Shock Hazard. Prior to installation on metallic plumbing, securely install two grounding clamps and a #4 copper wire per installation instructions. Failure to follow these instructions can result in death or electrical shock.

To filter all household water, install this home water filtration system on the household's main incoming water pipe. For a home with municipal water supply, install the filter between the home's incoming water supply and the water softener, if a water softener is being used (See Fig. 1). If the home has well water, reverse the order of the filter and the water softener (See Fig. 2).

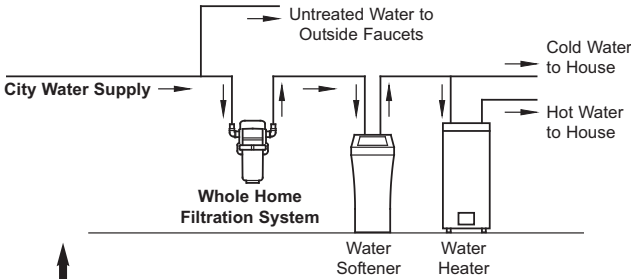


Fig. 1

OR

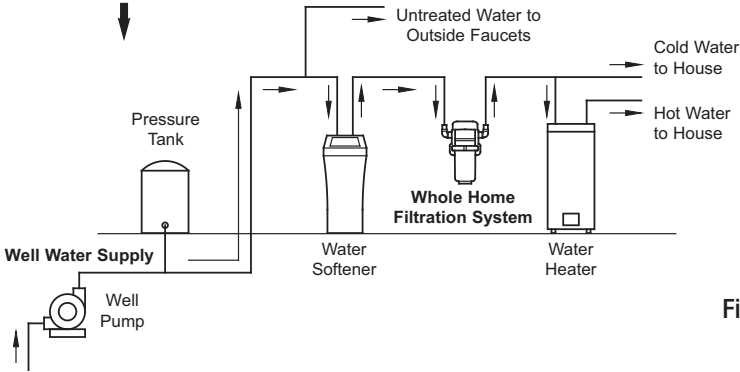
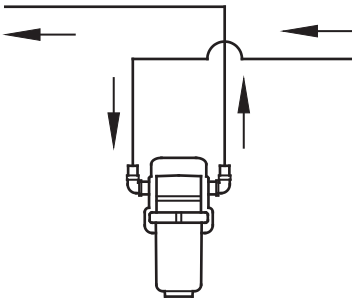


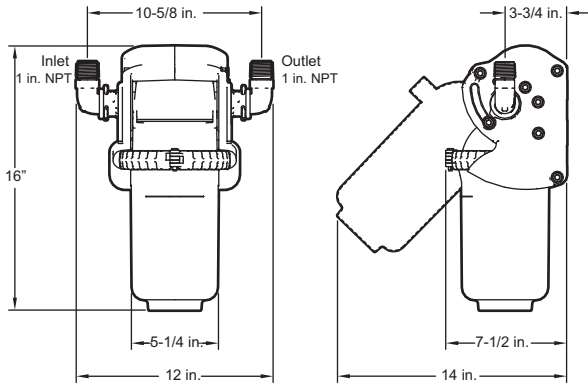
Fig. 2

In some cases, it may be necessary for plumbing to cross over to ensure the correct flow direction through the filter:



Pre-Installation (continued)

DIMENSIONS



SPECIFICATIONS

Rated Service Flow Rate @ 60 psi (414 kPa)	9.0 gpm (34.0 L/min.)
Pressure Drop @ 30 psi (207 kPa)	2 psig (13.8 kPa)
Water Pressure Limits (minimum / maximum)	30 - 100 psi (207 - 689 kPa)
Water Temperature Limits (minimum / maximum)	40 - 100 °F (5 - 38 °C)

PERFORMANCE CLAIMS

Read this performance data and compare the capabilities of this unit with your actual water treatment needs. It is recommended that, before purchasing a water treatment unit, you have your water supply tested to determine your actual water treatment needs. This filter system is designed to be used for the reduction of the performance claims listed below. Do not use where water is microbiologically unsafe or of unknown quality, without adequate disinfection before or after the system. While testing was performed under standard laboratory conditions, actual performance of the system may vary based on local water conditions. Some or all of the contaminants reduced by this unit may not be in your water supply. See elsewhere in this manual for further instructions on system installation, operating procedures, filter cartridge replacement, and warranty. The maintenance instructions must be followed for the product to perform as indicated below.

Filter cartridges should be replaced every six months. Replacement filter cartridges are available at your nearest The Home Depot store.



NOTE: Current pricing of replacement filter cartridge is approximately \$30.00 to \$60.00.

Substance	Required Influent Level	NSF Min. % Reduction Requirement ³	Average Influent Level	Avg./Max. Effluent Level	Avg./Min. Percent Removal	EPA Max. Contaminant Level ⁵
Particulates, Class III (5 to <15 micron) ¹	10,000 mg/L ²	85%	180,000 particles/mL ⁴	26/45 particles/mL ⁴	99.9%/99.9%	None

¹Micron is equivalent to micrometer (μ m).

²Milligrams per liter, which is equivalent to parts per million (PPM).

³Acceptance level for this substance is based on percent reduction, rather than maximum effluent concentration.

⁴Particles per milliliter.

⁵Environmental Protection Agency maximum contaminant level as required under the Safe Drinking Water Act.

Pre-Installation (continued)

TOOLS REQUIRED

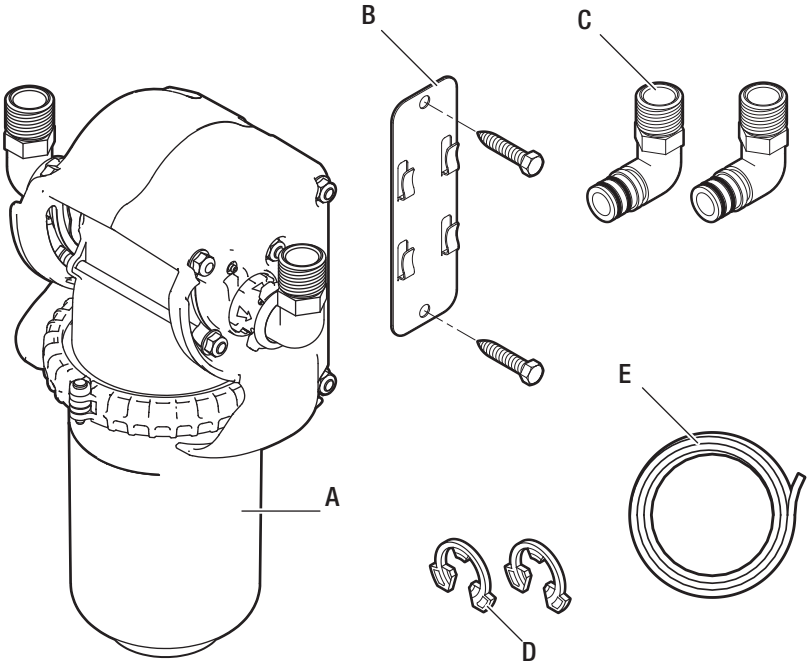


Wrench



Sealant tape

PACKAGE CONTENTS

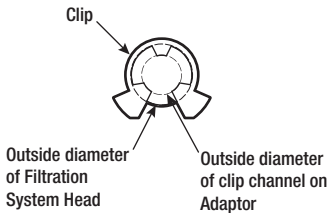
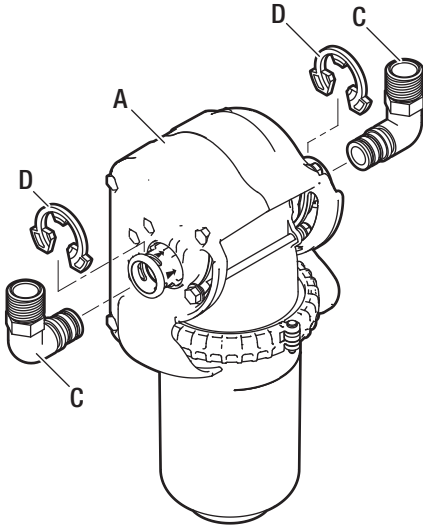


Part	Description	Quantity
A	Filtration system	1
B	Mounting bracket with 2 screws	1
C	Adaptor (1 in. male NPT thread)	2
D	Clip	2
E	Vent tube	1

Installation

1 Attaching the adaptors and clips to the filter

- Insert the adaptors (C) into the holes on each side of the filter head (A).
- Secure in place with the clips (D). Ensure all three tabs of the clips (D) go through the matching holes and fully into the channels on the adaptor (C).

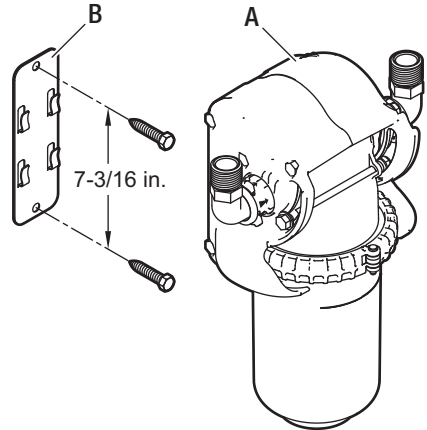


2 Mounting the filter



IMPORTANT: To operate properly, you must install this filtration system in a vertical orientation. The filtration system must also be installed with the water flow following the arrows on the filter's inlet and outlet. This corresponds to a left-to-right flow, when looking at the front of the filter head assembly.

- Use the included screws to mount the mounting bracket (B) to a strong and stable surface that can support up to 15 lbs. Allow for a few inches of space under the sump of the filter (A) to allow you to grasp and pivot it outward when replacing filter cartridges.
- Mount the filter (A) to the bracket (B) using the four notches on the bracket. When mounted, the filter should be aligned with the inlet and outlet plumbing, and not cause rigid pipes to distort.



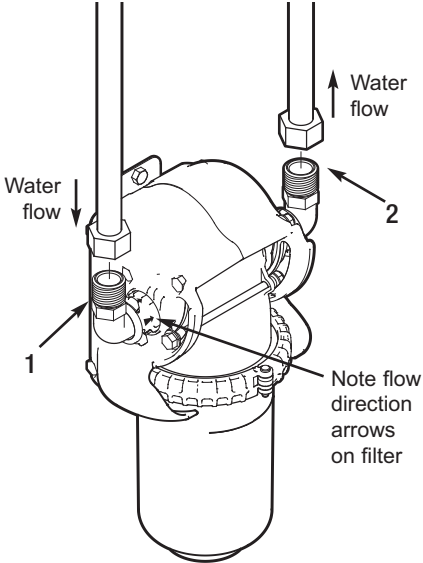
Installation (continued)

3 Connecting the water supply lines



IMPORTANT: Do not solder the metal plumbing while attached to plastic installation adaptors. Solder heat will damage the adaptors.

- Seal the inlet (1) and outlet (2) threads of the filter adaptors with several wraps of sealant tape.
- Connect the water supply lines to the inlet (1) and outlet (2) adaptors using 1 in. female NPT threaded adaptors (not included). Use caution to avoid cross-threading the adaptors.

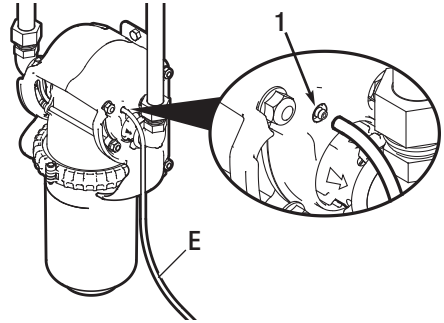


4 Installing the vent tube



IMPORTANT: The vent tube works using gravity. Do not elevate it above the vent port. Route it downward to the drain point with no humps, dips, or loops.

- Press the end of the vent tube (E) firmly over the barbed fitting (1) on the filter.
- Route the vent tube (E) down to a floor drain, laundry tub, or other suitable drain point.



Filter Cartridges

USE GLACIER BAY REPLACEMENT FILTER HDGEFF4

FILTER CARTRIDGE LIFE

Replace the filter cartridge every six months. There are several variables that determine how long a cartridge will last.

These include:

1. How much water you use, and
2. How much sediment, taste and/or odor, or other unwanted substance, is in the water.

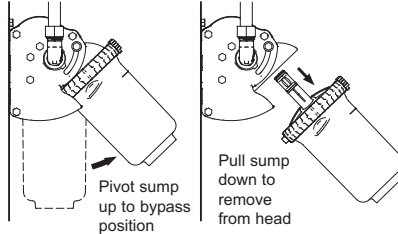
You will know it is time to replace the cartridge when you first notice the return of the unwanted sediment, taste and/or odor in your water, or when the flow diminishes or stops.

FILTER CARTRIDGE REPLACEMENT



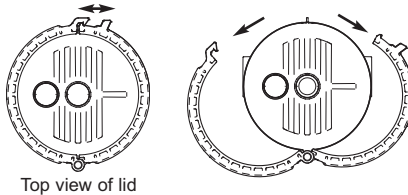
NOTE It is not necessary to shut off the water supply when replacing the filter cartridge.

1. Grasp the lower part of the sump and pull it firmly and slowly toward you, pivoting upward until it stops in the bypass/filter change position. You may notice a hissing sound, as a small amount of water (approximately 4 ounces) is expelled into the vent tube to relieve pressure in the sump.



2. Pull the sump downward out of the head. To avoid unintended water flow from the filter head, do not pivot the filter head down to the service position without the sump and replacement filter cartridge in place.
3. Take the sump assembly to a sink or level waterproof surface before opening it. Unsnap the lid clamp by pulling its latches in opposite directions. Do not pry or use tools, as this may damage the assembly.

Pull latches in opposite directions to unsnap



Top view of lid

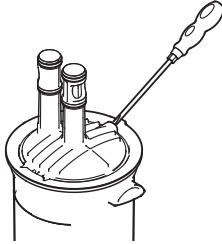
4. Swing the clamp halves open and lift the lid assembly up off the filter cartridge and sump.



NOTE Do not remove the pin that holds the clamp halves to the lid.

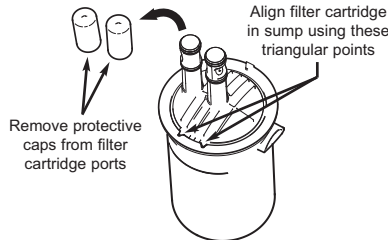
Filter Cartridges (continued)

- Remove the used filter cartridge from the sump. If you have difficulty removing the cartridge from the sump, insert a screwdriver into the slot and pry up. Dispose of the used cartridge properly.

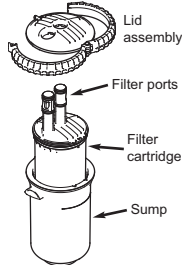


NOTE Check the sump to ensure it is dry and free of debris.

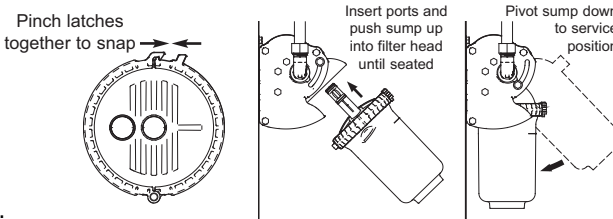
- Take the new filter cartridge out of its packaging and remove the protective caps from the ports. Filter cartridges can only be installed in one orientation, and are “keyed” to assure proper fit. Insert the new filter cartridge into the sump, and turn it until the triangular points on its top edge align with, and drop into the corresponding detents in the sump.



- Slide the lid assembly down over the replacement cartridge's ports until it sits flat on top of the sump, then lock the clamp onto the sump by pinching together the latches until they snap. The clamp will not snap unless the cartridge and sump are properly seated and aligned.



- Insert the sump assembly into the head by guiding the filter ports into the corresponding receptacles in the head and pushing the sump upward until it stops.

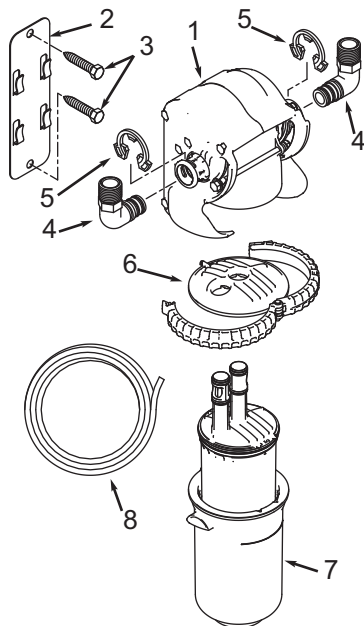


- Pivot the sump all the way down to the service position.
- Some types of filter cartridges contain activated carbon, a black powder. Open a faucet downstream from the filter to purge air and fine carbon particles from the cartridge. Flush for at least 5 minutes.

Troubleshooting

Problem	Possible Cause	Solution
The replacement filter cartridge does not fit in the filter sump.	The filter cartridge is not properly oriented.	Reorient the filter cartridge.
The lid does not fit on the filter.	The filter cartridge is not properly oriented.	Reorient the filter cartridge.
The lip clamp cannot be latched.	The filter cartridge is not properly oriented.	Reorient the filter cartridge.
Water leaks from the adaptor at the threads.	The seal in the threads is inadequate.	Reinstall the adaptor with adequate Teflon tape or plastic compatible pipe sealant on the threads.
Water leaks from the adaptor at the O-rings.	The O-ring is damaged.	Inspect and replace the O-ring if damaged.
Water drips from the outlet side of the filter head, near the vent tube.	Water is flowing back through the vent hose.	Ensure the vent hose is not elevated above the filter head.

Replacement Parts



Key No.	Part No.	Description
1	1073-21-HA	Head Assembly
2	1042-32-HE	Mounting Bracket
3	1042-32-HE	Mounting Screw (2)
4	1042-32-HB	Installation Adaptor Elbow, 1" NPT, including o-rings (2)
5	1042-32-HB	Clip (2)
6	1042-32-HD	Lid & Clamp Assembly
7	1042-32-HC	Sump
8	1042-32-47	Vent Tube, 6 ft. long
9*	HDGEFF4	Replacement Filter

* Purchase replacement filter cartridges from your local The Home Depot store.

To order replacement parts call 1-800-247-1087,
7 a.m. - 6 p.m., CST, Monday - Friday



Questions, problems, missing parts? Before returning to the store,
call Glacier Bay Customer Service
7 a.m. - 6 p.m., CST Monday-Friday

1-800-247-1087

HOMEDEPOT.COM/GLACIERBAY

Retain this manual for future use.

Manufactured by
Ecodyne Water Systems
1890 Woodlane Drive
Woodbury, MN 55125