



CORDLESS CELLULAR SHADE INSTALLATION & CARE INSTRUCTIONS

■ Know Your Shade

Hardware includes:



Bracket Hex-Head Screw Pulling Handle

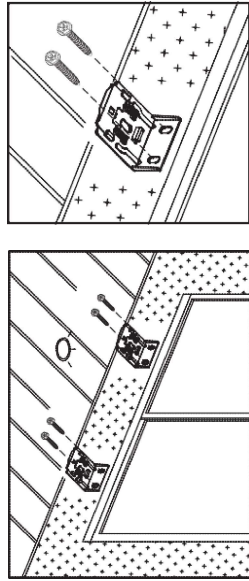
Hardware quantities included in each shade:

Shade Width	# of the Bracket	# of the Screw	# of the Pulling Handle
18" ≤ W < 54"	2	4	1
54" ≤ W < 72"	3	6	2

The brackets can be used for inside mount and outside mount.

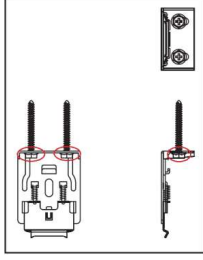
■ Outside Mount

Position the brackets above window opening. Remember to leave the brackets few inches away from each side of your window. Spread them out evenly by having same distance from each side of the window.



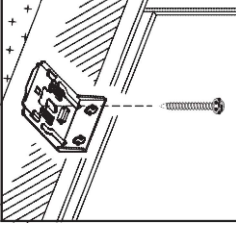
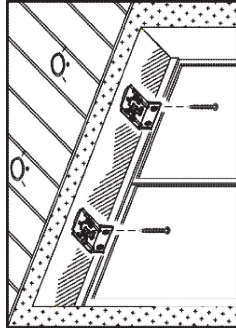
Make sure the brackets are aligned to each other. "L" shape opening should be facing down, with shorter side against the wall.

Insert 2 hex-head screws into both openings and fasten.



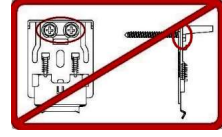
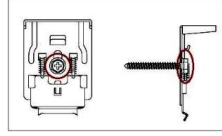
■ Inside Mount

Position the brackets along the top of the window opening in the desired location. Remember to leave few inches away from each side of your window.



Make sure both brackets are aligned. "L" shape opening should be facing down, with longer side against top of the window opening.

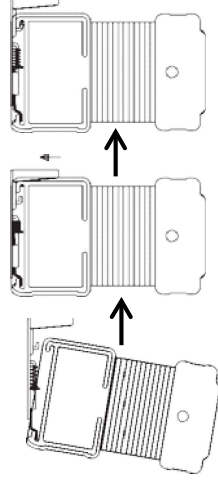
Insert 1 hex-head screws into oval opening, between 2 springs, and then fasten.



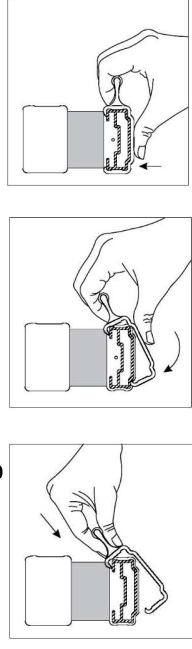
DO NOT use hex-head screws for the holes on the back of the bracket for inside mount. It will prevent your shade from clicking in place. These holes can be operated with 2 flat-head screws (Flat-head screws are not included in the package).

■ Mount the Shade to the Brackets

Install the headrail by hooking the front of the bracket and then push the shade towards back of the brackets, in a rolling motion, until clicks place.



■ Installing the Handle



The Transparent Cordless Handles should be operated from the center of the bottom rail.

For shades 54" < W ≤ 72", spread handles out evenly by having the same distance from each side of the window.

To insure proper usage of the cordless shades, be sure to extend and retract shade steadily assuring the cord to stack evenly.

**Please allow 24 hours for your shade to drop to its actual height when first installed due to the nature of the fabric.

■ Care and Clean

Wipe the shade periodically with a soft dust cloth or the dusting mitt, or vacuum with a soft brush in a lowest speed.

