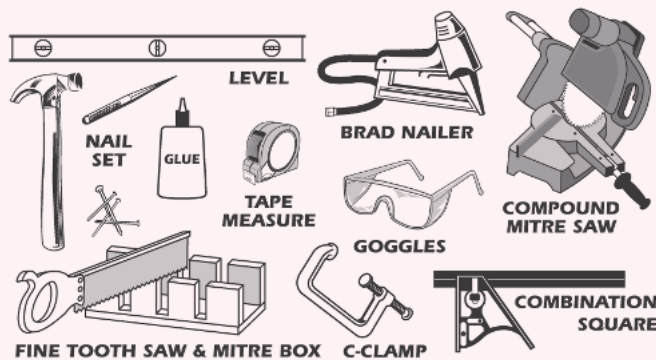


MTRIM
MOLDING INNOVATION

Installation & Cleaning Guide

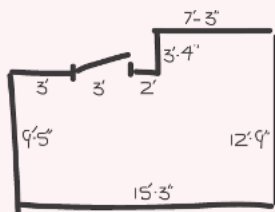
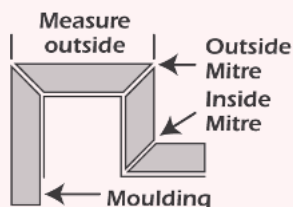
Tools needed to install moldings

- Clamps
- Framing Square
- Finishing Nails, Nail Set and Hammer or Brad Nailer
- Hearing Protection
- Level
- Miter Box, Miter Saw or Compound Miter Saw
- Pen and Paper
- Protractor Square
- Safety Glasses
- Tape Measure
- Utility knife
- Wood Filler and Glue



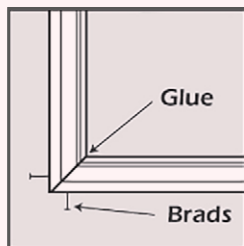
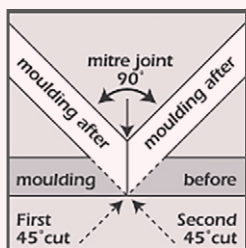
Install moldings

1



Take measures of walls, windows and openings in the room and round up to the nearest foot. It is recommended to add 15% for waste.

2



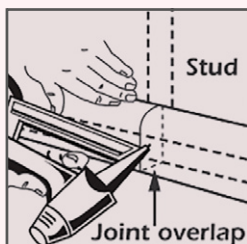
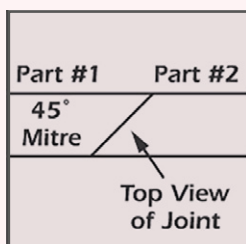
Must moldings are installed with a 90 degree angle joint. Cut 2 pieces of molding with a 45 degree angle each piece and together they make 90-degree angle. Use WPB Cement to glue the ends of the boards. On both sides place fasteners 2" from the end.

First install the longest pieces. If you are right-handed it would be better installing counterclockwise, if you are left-handed, it would be better installing clockwise.

Along the back of molding apply construction adhesive. Press molding against the wall. To secure molding, use finishing nails into place. Apply caulk in remaining gaps and smooth with putty knife or finger. Use caulk or light weight spackle to fill in holes. Use latex paint to touch up molding as needed.

Install moldings

3



How Do I Splice a Molding?

To span longer lengths, you may have to splice moldings. Mitre the joining ends at 45° angles from front to back. One member will overlap the other in a scarf joint, creating a vertical face seam in the finished installation. It is advisable to join molding pieces over wall stud for additional strength.

4

Always wear eye, ear and respiratory protection when doing any home improvement project. Cut and mill in a well-ventilated area. WPB MTrim boards are not designed for structural use.

WPB is subject to expansion and contraction. Allow the product to acclimate in the room where they'll be installed for 48 hours prior to installation.



Cleaning:

Clean the surface and back of molding of dust and dirt with a sponge or clean cloth, make sure that the molding is completely dry before installation. You can clean WPB MTrim with most major household cleaners, it should be applied and immediately wiped dry.

