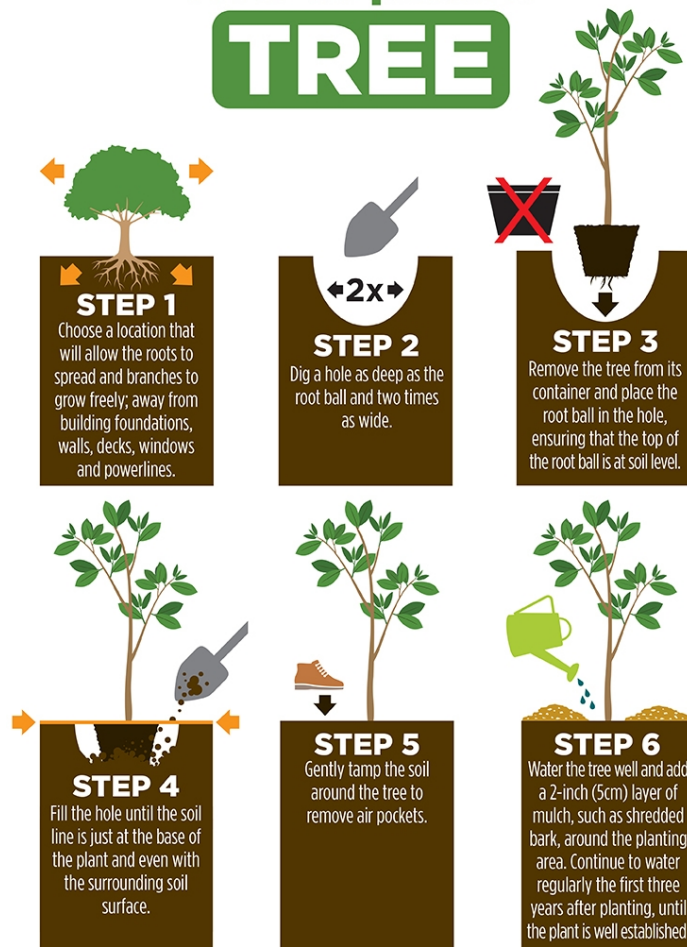


USE & CARE MANUAL

PLANTING GUIDE:

How to plant a **TREE**



STEP 1) First, decide on a planting location. Consider carefully what kind of sun, soil, and growing-space your tree or shrub will need.

STEP 2) Once you've located the perfect spot, the hole you are digging must be at least double the width and as deep as the root system you are planting.

STEP 3) The top of the root system should be level with the ground. Before placing the tree or shrub in the hole, use your hands to gently break up the root system.

STEP 4) Once the tree is in place, backfill the hole with native soil and any leftover potting material.

STEP 5) Pack down the soil to eliminate any air pockets.

STEP 6) When finished, water thoroughly.

(continued below)

PLANTING CARE:

This tree grows best in moist, richer soils that are acid or neutral. This tough and vigorous tree is very adaptable, and it grows well in most ordinary garden conditions. Water it regularly and deeply for the first few seasons, but once established it will tolerate ordinary summer dryness. If you have very alkaline soil, a tree like a Sycamore could be a better choice. It is rarely affected by pests or diseases, and it needs no special pruning – it will develop a lovely upright, spreading crown all by itself. Remove lower branches at the trunk if you need room to pass underneath, and then you will also be able to admire the beautiful bark of this tree.