

BEFORE YOU BEGIN

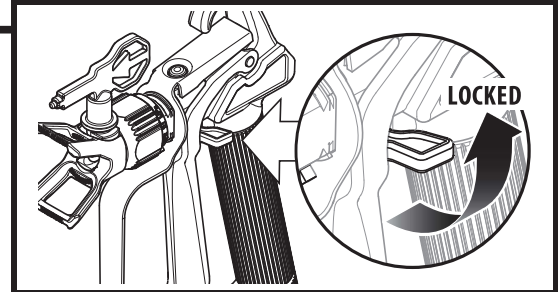


This section contains instructions that will be repeated throughout this manual. Read and understand this section before using the equipment.

SPRAY GUN TRIGGER LOCK

Engage the trigger lock whenever instructed.

The gun is locked when the trigger lock is at a 90° angle (perpendicular to the trigger in either direction).

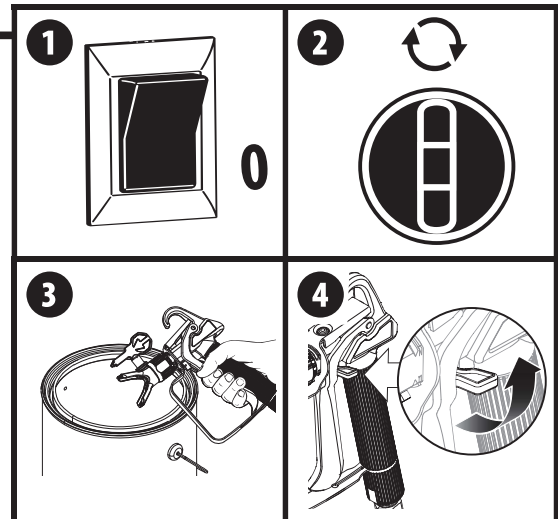


PRESSURE RELIEF PROCEDURE



Be sure to follow the Pressure Relief Procedure when shutting the unit off for any purpose. This procedure is used to relieve pressure from the spray hose.

1. Turn the power OFF (0).
2. Lock the spray gun. Turn the PRIME/SPRAY knob to PRIME.
3. Unlock the spray gun. Briefly pull the trigger to fully relieve pressure from the system.
4. Lock the spray gun.



MOVING / EMPTYING THE SPRAYER

When lifting the sprayer in order to move it or empty the tank, secure with both hands the grooved handle area on both sides of the tank.



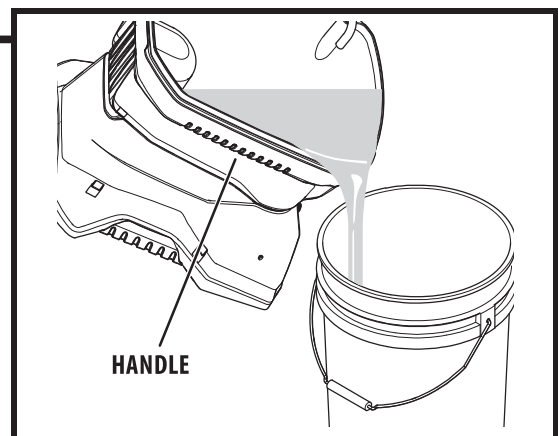
The sprayer can be heavy when filled with spraying material. Make sure to lift with your legs and not your back in order to reduce the risk of injury.

Do not use the tank lid to carry the sprayer as it may slip off, causing the sprayer to be dropped.



Do not use the hose as a strength member to pull or lift the equipment.

This pump is liquid-cooled. Do not allow the sprayer to run without paint or water in the tank.



LOAD MATERIAL



These steps will prime the system and get it ready to spray.

www.wagnercontrolpro.com/howtoCP130

YOU WILL NEED

- The material you plan to spray
- Extension cord
- Waste bucket



Recommendation: It is good practice to perform the steps on this page using water to familiarize yourself with the function of the unit as well as to ensure the unit is set up properly.



Recommendation: Always use new spray material or material that has been thoroughly strained. Old material often contains debris that can clog the system.



Take care to prevent material spills. Make sure to use drop cloths and mask anything that is in the spraying area and could accidentally be sprayed.

1. Push tab on filter twice to ensure inlet valve operation.
2. Fill the tank with spray material. Pull the return tube from the tank and hold it over a waste container.
3. Plug in the sprayer.
Turn the PRIME/SPRAY knob to PRIME.
Turn the power ON (I). Do not run the sprayer dry.
4. Allow pump to run until you see spray material flowing from the return tube (A).
5. Turn power OFF (O).
Place return tube back into position over the tank (B).
Replace the tank lid.

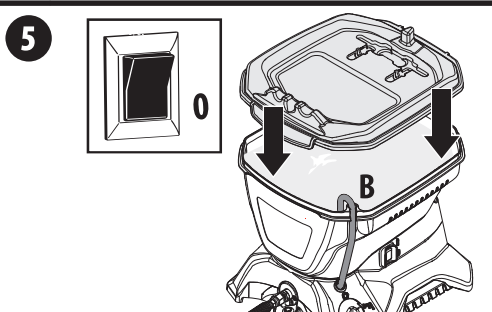
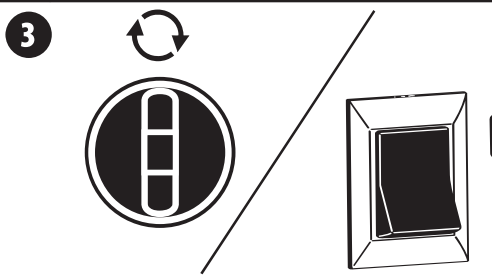
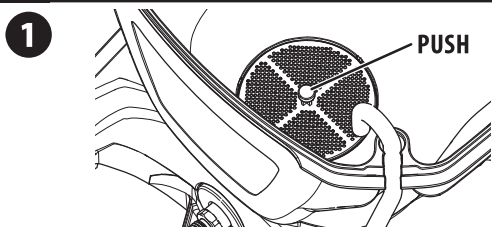


For consistent color results, add spray material regularly in order to mix it.

When the tank empties, stop spraying immediately. Refill the tank and then follow steps 3-5.



The tank lid should fit snugly over the tank, but it is not designed to be air- or liquid-tight. Do not tip the unit when it is filled with spray material.



SPRAYING



Follow these steps to deliver spray material from the tank to the spray gun.

YOU WILL NEED

- Waste bucket
- Scrap material / cardboard
- Drop cloths to protect floors and furnishings from overspray

1. Make sure the tip and spray guard are removed. Point the spray gun into a separate waste container. Unlock the spray gun trigger.

Squeeze and hold trigger for steps 2-3.

2. Turn the power ON (I).

Turn the PRIME/SPRAY knob to SPRAY.

3. Continue to squeeze trigger until the material is flowing freely through the spray gun.

4. Perform the **Pressure Relief Procedure**, page 7.

5. IMPORTANT: Make sure the washer (a) and saddle seat (b) are installed in the rear of the spray guard. Note the orientation of the saddle seat (b) based on the orientation of the spray tip.

6. Make sure the spray gun trigger is locked. Thread the spray tip guard assembly onto the gun. Tighten by hand.

7. Make sure the spray tip is rotated forward to the spray position, with the arrow on the tip facing forward.

Unlock the spray gun trigger.

8. Turn the power ON (I). Turn the PRIME/SPRAY knob to SPRAY.

Point the spray gun at a piece of scrap material/cardboard.

Pull the trigger and practice spraying (see page 10).



Motor will cycle ON and OFF while spraying to regulate pressure. This is normal.

The sprayer will not blow air. There must be spray material or water in the tank.

Do not run the sprayer without spray material or water in the tank.

