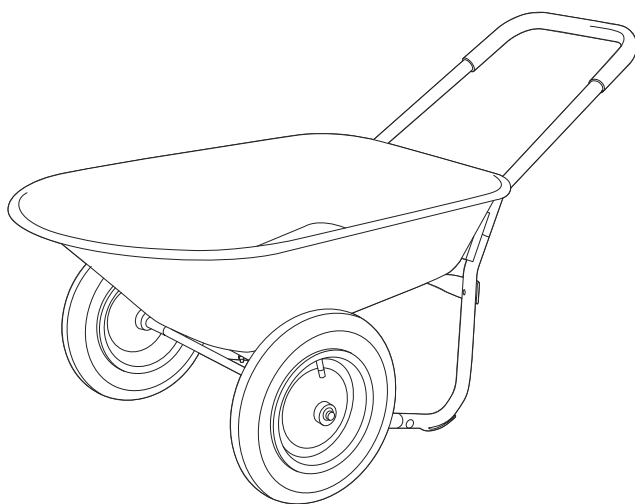




DUAL WHEEL WHEELBARROW SKU: 81021
METAL TRAY 16 INCH FLAT-FREE TIRE



ASSEMBLY
AND USER'S GUIDE

81021





TABLE OF CONTENT

TABLE OF CONTENTS	1
IMPORTANT SAFETY INSTRUCTIONS	2
OVERVIEW (PRODUCT INFORMATION)	3
PACKAGE CONTENTS.....	3
OVERVIEW (PRODUCT INFORMATION).....	5
ASSEMBLY	6
ASSEMBLY INSTRUCTION.....	6
DISCLAIMER	13
<i>DISCLAIMER</i>	13
<i>CUSTOMER SERVICE</i>	13

IMPORTANT SAFETY INSTRUCTIONS

DANGER

- Do not exceed the weight limit of 330 lbs for this item. Exceeding this may cause injury or damage.
- Do not sit or ride in this wheelbarrow.
- Do not use this item in a way inconsistent with the manufacturer's instructions.

WARNING

- Do not allow children to use this item unsupervised.
- Avoid use near sharp or hazardous objects to prevent tire damage.
- This is not a step ladder; standing on it is unsafe.
- Cease use if parts are missing, broken, or worn. Ensure repairs and replacements before reuse.

CAUTION

- Always distribute the load evenly over the surface of the tray.
- Do not load weight on the edges of the tray.
- Be aware that some parts are heavy and have sharp edges.

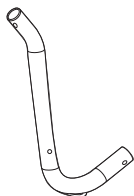
NOTE

- Firmly secure all bolts, screws, and knobs before use.
- Reconfirm that all bolts, screws, and knobs are secure every 90 days.
- Keep these instructions for future use.

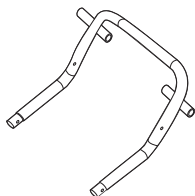
OVERVIEW (PRODUCT INFORMATION)

PACKAGE CONTENTS

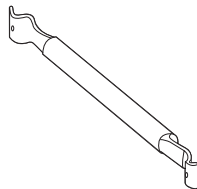
PARTS



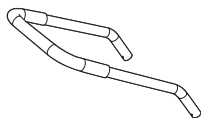
PART#: A
BACK FRAME
2 PC(S)



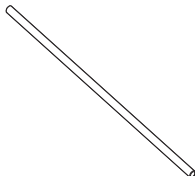
PART#: B
FRONT FRAME
1 PC(S)



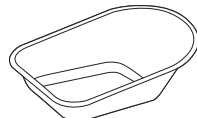
PART#: C
CENTER SUPPORT
1 PC(S)



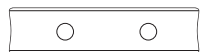
PART#: D
HANDLE
1 PC(S)



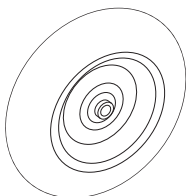
PART#: E
AXLE
1 PC(S)



PART#: F
TRAY
1 PC(S)



PART#: G
PLASTIC SPACER
2 PC(S)



PART#: H
WHEEL
2 PC(S)

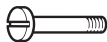
OVERVIEW (PRODUCT INFORMATION)

HARDWARE



8 x 65MM

PART#: 1
BOLT
2 PC(S)



8 x 45MM

PART#: 2
BOLT
6 PC(S)



8MM

PART#: 3
WASHER
8 PC(S)



8MM

PART#: 4
SPRING WASHER
8 PC(S)



8MM

PART#: 5
NUT
8 PC(S)



PART#: 6
AXLE WASHER
2 PC(S)



PART#: 7
COTTER PIN
2 PC(S)

TOOLS REQUIRED



SMALL
WRENCH



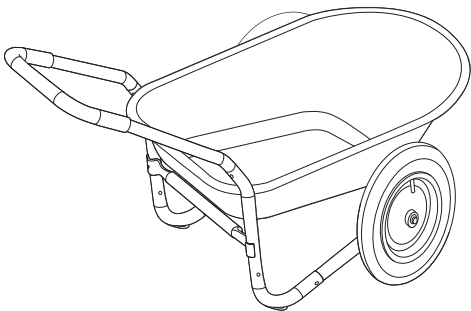
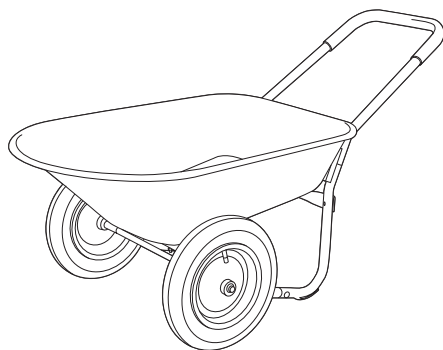
FLATEHEAD
SCREWDRIVER

OVERVIEW (PRODUCT INFORMATION)

OVERVIEW (PRODUCT INFORMATION)

FRONT VIEW

REAR VIEW



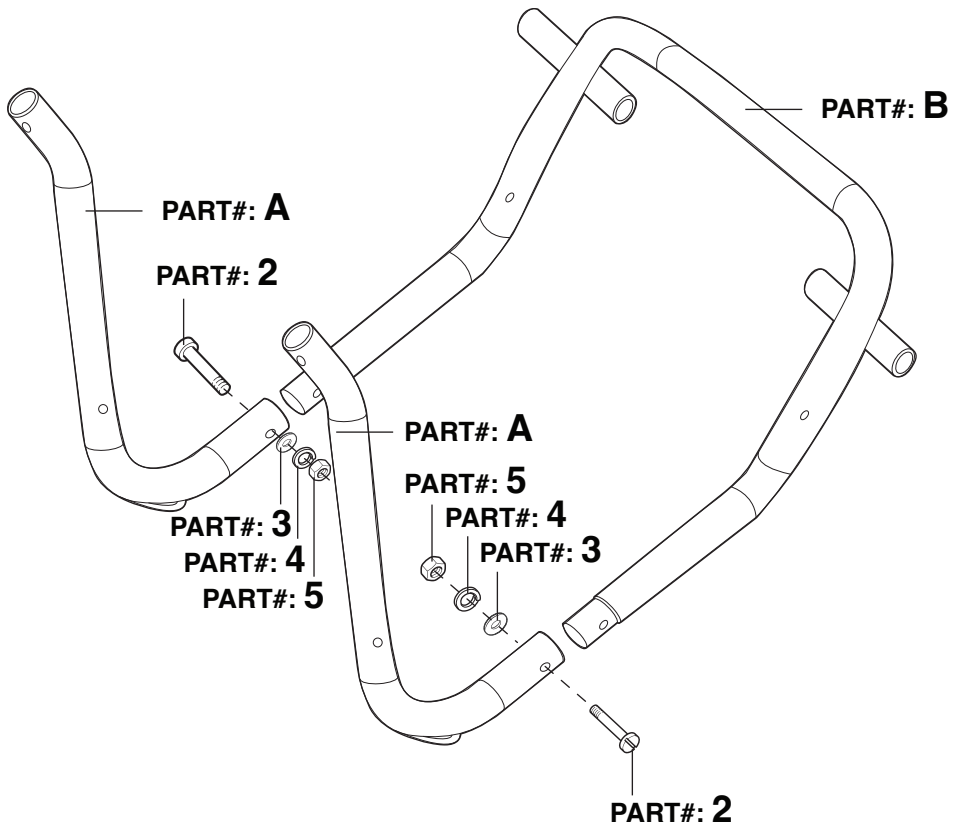
SPECIFICATIONS

Model	81021
Product Dimension	26 INCH x 57 INCH x 26 INCH
Tray Capacity	5 CUBIC FEET
Tray Material	Metal
Tray Dimension	35.5 INCH x 25.2 INCH x 8.7 INCH
Tire Size	16 INCH
Tire Type	Flat-Free Tire
Weight Capacity	440 LB(S)

ASSEMBLY INSTRUCTION

STEP 1

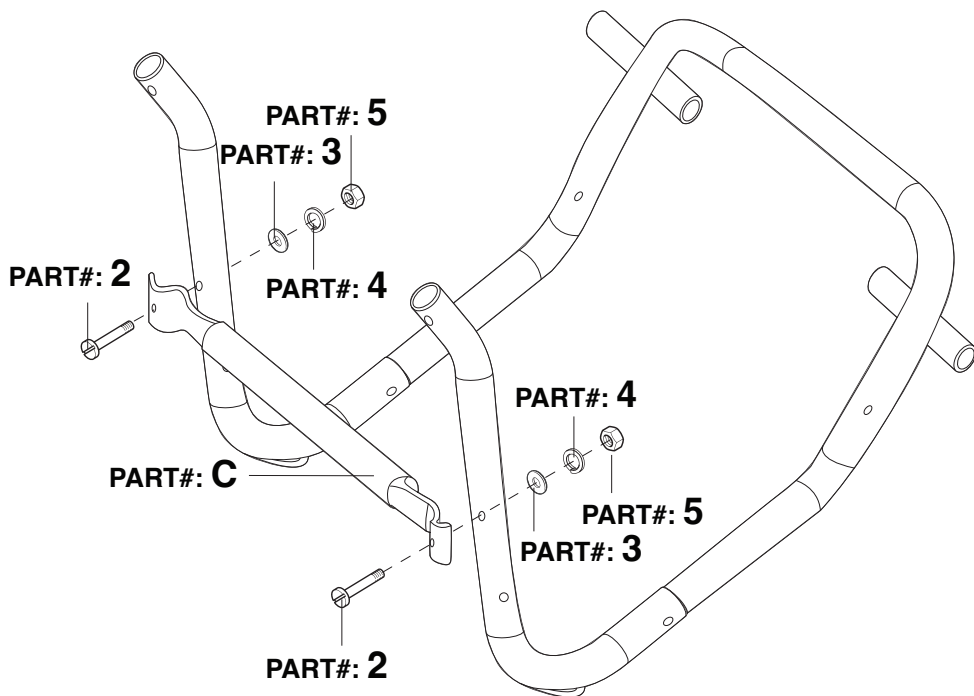
- Attach PART# A to PART# B.
- Secure with PART# 2, PART# 3, PART# 4, and PART# 5.



ASSEMBLY

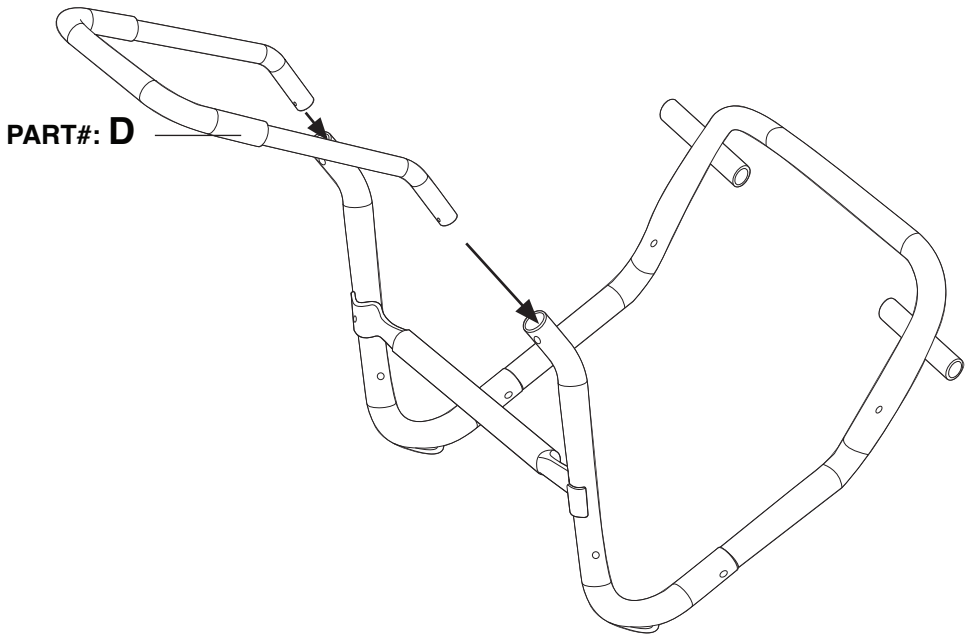
STEP 2

- Attach PART# C.
- Secure with PART# 2 , PART# 3, PART# 4 , and PART# 5 .



STEP 3

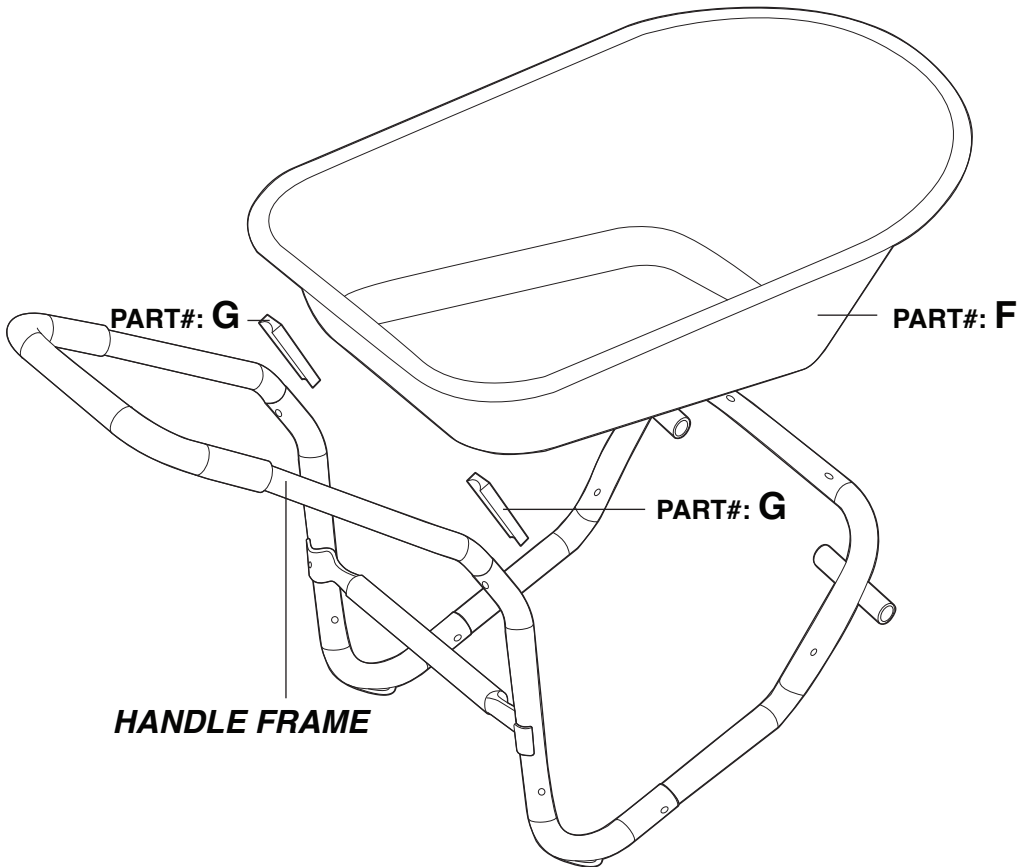
- Insert PART# D.



ASSEMBLY

STEP 4

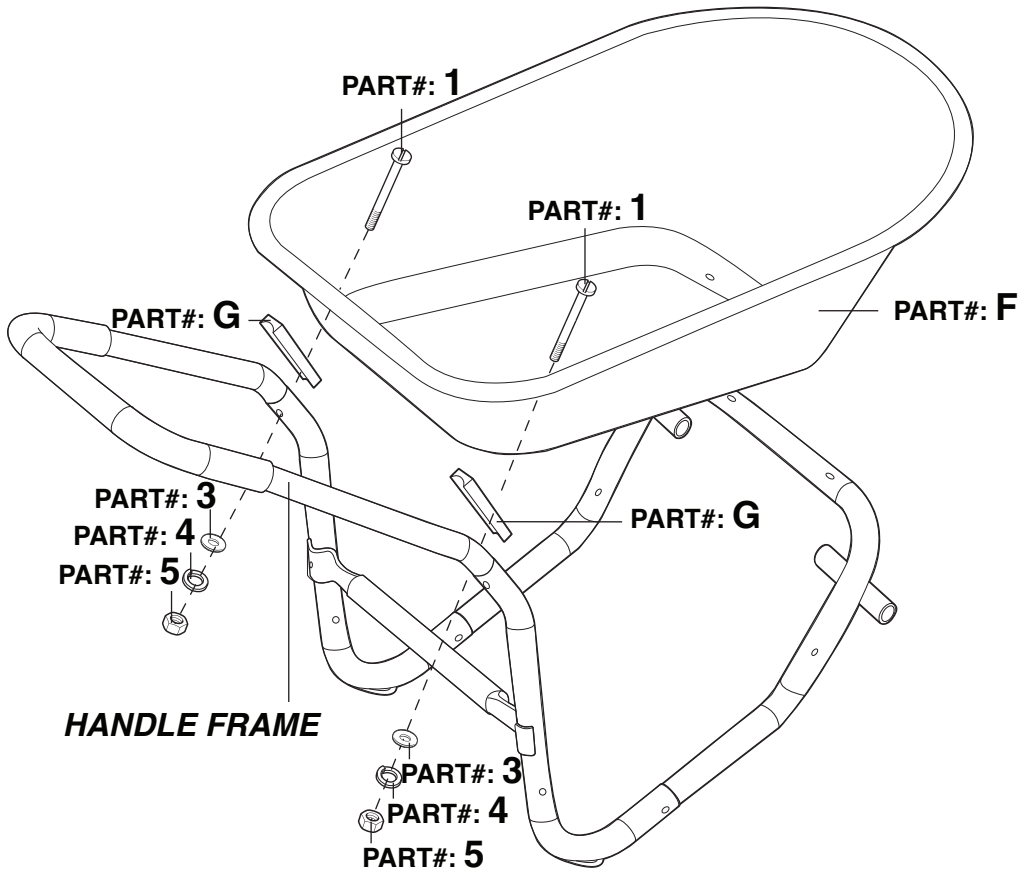
- Attach PART# F to *HANDLE FRAME*, and place PART# G between PART# F and *HANDLE FRAME*.



ASSEMBLY

STEP 5

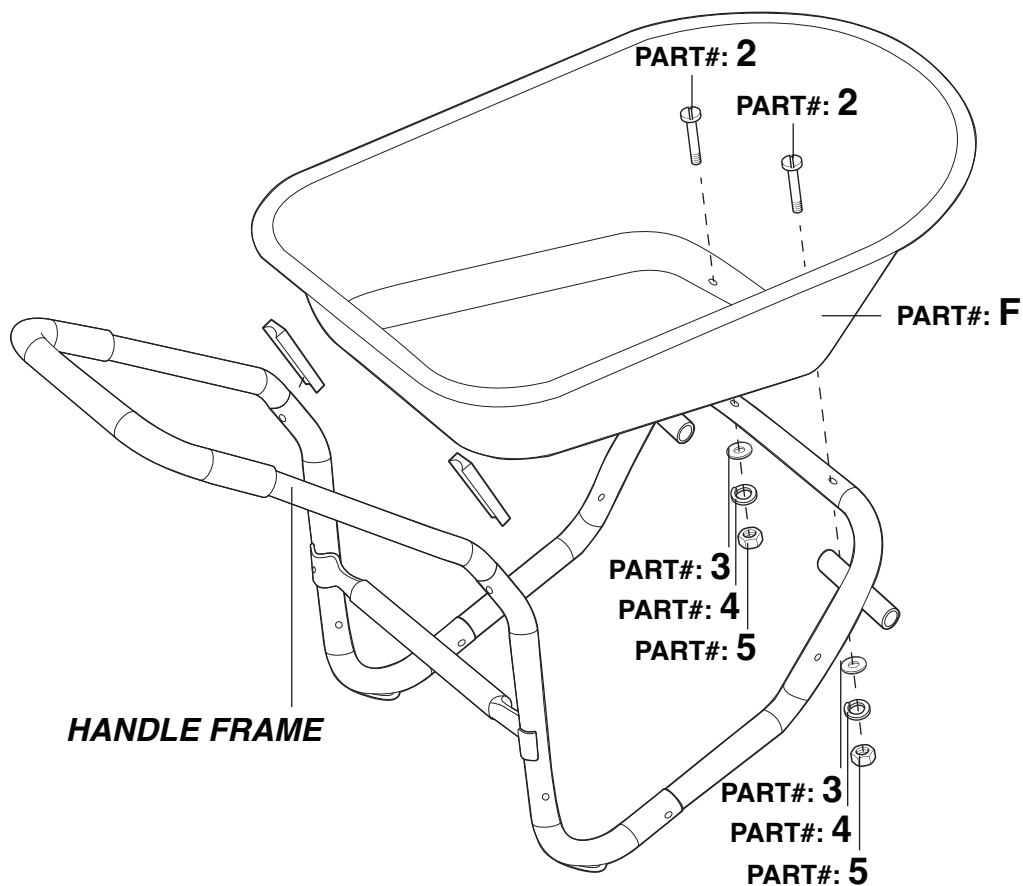
- Secure PART# F, PART# G, and *HANDLE FRAME* with PART# 1, PART# 3, PART# 4, and PART# 5.



ASSEMBLY

STEP 6

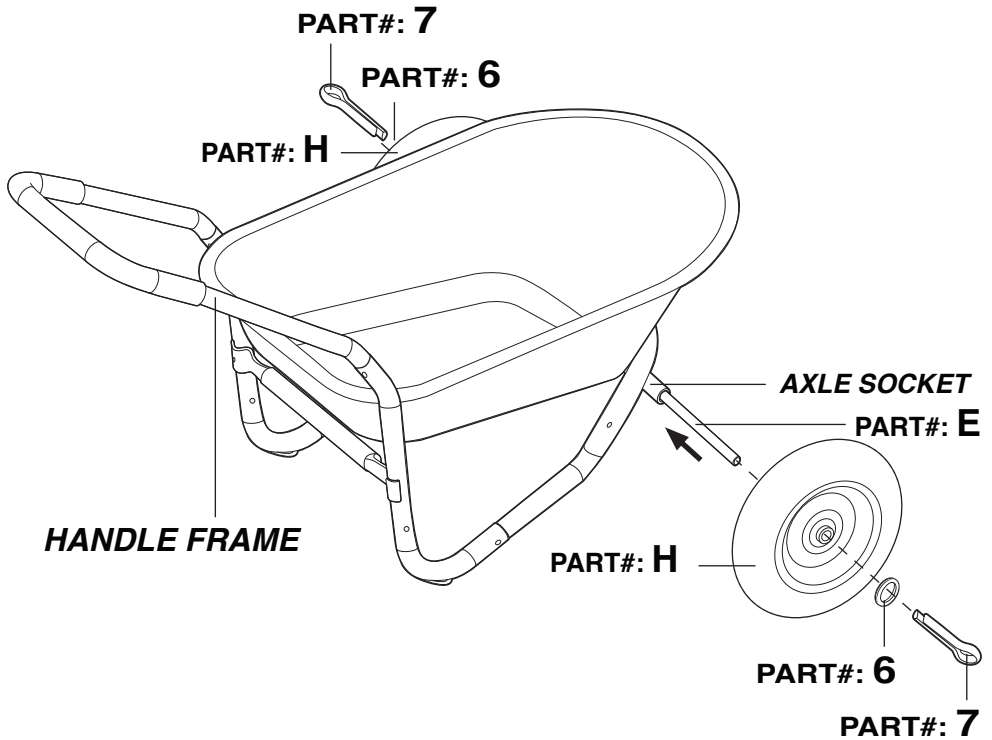
- Secure PART# F and *HANDLE FRAME* with PART# 2, PART# 3, PART# 4, and PART# 5.



ASSEMBLY

STEP 7

- Slide PART# E through the *AXLE SOCKET* on *HANDLE FRAME*.
- Attach PART# H to PART# E, secure with PART# 6 and PART# 7, and bend the pin of PART# 7 to firmly lock PART# H in place.
- Repeat the same process on the other end of PART# E.



DISCLAIMER

PLEASE READ THE FOLLOWING CAREFULLY

The manufacturer and/or distributor have provided the parts list and assembly diagram in this manual for reference purposes only. They do not make any representation or warranty to the buyer that they are qualified to make repairs to the product or replace any parts of the product. In fact, the manufacturer and/or distributor expressly state that all repairs and parts replacements should be undertaken by certified and licensed technicians, and not by the buyer.

The buyer assumes all risk and liability arising from their repairs to the original product or replacement parts or arising from their installation of replacement parts. It is strongly advised that qualified professionals handle any repairs or replacements to ensure safety and proper functioning of the product. Improper installation and operation may result in injury, property damage, or voiding of warranty. The manufacturer and/or distributor shall not be held responsible for any accidents, damages, or malfunctions resulting from the buyer's installation and operation of the product. It is essential to follow all safety guidelines and recommendations provided in this manual and to seek professional assistance if unsure about the installation or operation procedures.

CUSTOMER SERVICE

If you have any questions about ordering our pool pumps and replacement parts or pool products, please feel free to contact us using the following contact information:

Customer Service and Technical Support

Phone: (909) 628-0880

Email: customer@xtremepowerusa.com

Hours of Operation: Monday – Friday, 9AM – 4PM (CST)
