

For Residential and Commercial Applications

Job Name		Engineer / Architect	
Job Location		Wholesaler	
Submittal Date		Contractor	

V1-**A & V3-**A Speedi Plumb® Vinyl Faucet Connectors - Compression Inlet

Use: For use in potable water distribution systems in accessible locations only

Design Features:

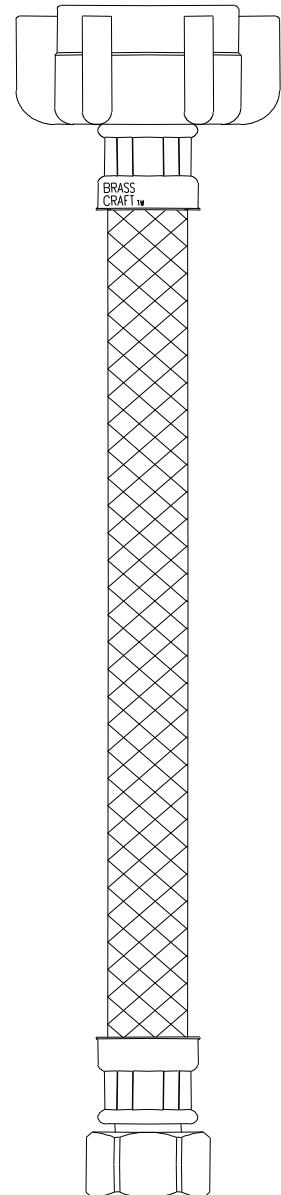
- **No kink hose.** The specially engineered reinforced PVC hose provides unique flexibility to prevent kinking and crimping
- **Strong & durable** with a tighter weave and two-layer bonded construction, outperforms conventional vinyl connectors
- **Rubber washers** provide a large pliable sealing surface and ensures a long lasting water tight connection
- **Deep threaded wing nuts** for quick and secure connections
- **8-sided pneumatic crimp** provides greater dependability for reliable nut-to-hose connections



Operating Specifications:

Temperature: 40°- 160° F, intermittent to 180° F
Pressure: 125 PSI maximum

Tubing Diameter: 0.300" ID (0.500" OD)



CONNECTOR MATERIAL SPECIFICATIONS	
Hose	<i>PVC with polyester braid reinforcement</i>
Barbs	<i>Brass</i>
Ferrule	<i>Steel, zinc plated</i>
Nut	<i>Brass, plated or polypropylene</i>
Washer	<i>Rubber</i>

Part Listing:

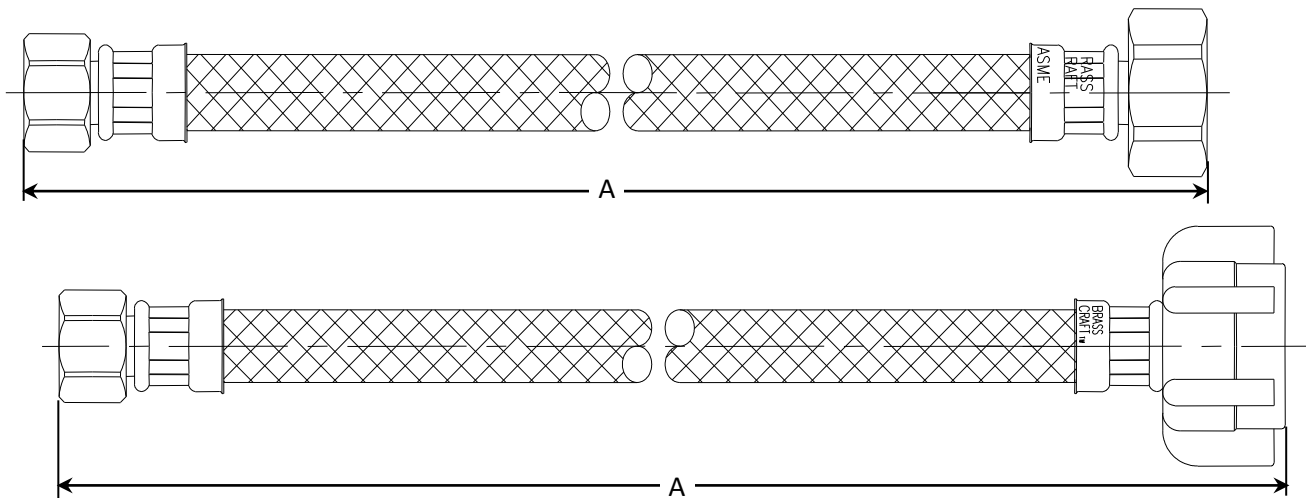
- | | | |
|--------------------------|-----------|--|
| <input type="checkbox"/> | V1-12A F | 3/8" compression x 1/2" FIP x 12" length |
| <input type="checkbox"/> | V1-12AM F | 3/8" compression x 1/2" FIP metal nut x 12" length |
| <input type="checkbox"/> | V1-16A F | 3/8" compression x 1/2" FIP x 16" length |
| <input type="checkbox"/> | V1-16AM F | 3/8" compression x 1/2" FIP metal nut x 16" length |
| <input type="checkbox"/> | V1-20A F | 3/8" compression x 1/2" FIP x 20" length |
| <input type="checkbox"/> | V1-20AM F | 3/8" compression x 1/2" FIP metal nut x 20" length |
| <input type="checkbox"/> | V1-30A F | 3/8" compression x 1/2" FIP x 30" length |
| <input type="checkbox"/> | V1-30AM F | 3/8" compression x 1/2" FIP metal nut x 30" length |
| <input type="checkbox"/> | V1-36A F | 3/8" compression x 1/2" FIP x 36" length |

This specification and all information contained herein is the confidential and exclusive property of Brasscraft Manufacturing Company and shall not be disclosed to others without the written consent of Brasscraft Mfg. Co. This specification must be returned to Brasscraft Mfg. Co. if requested.

V1-**A & V3-**A Speedi Plumb® Vinyl Faucet Connectors - Compression Inlet

Part Listing (con't):

- V1-36AM F 3/8" compression x 1/2" FIP metal nut x 36" length
- V3-12A F 1/2" compression x 1/2" FIP x 12" length
- V3-12AM F 1/2" compression x 1/2" FIP metal nut x 12" length
- V3-16A F 1/2" compression x 1/2" FIP x 16" length
- V3-16AM F 1/2" compression x 1/2" FIP metal nut x 16" length
- V3-20A F 1/2" compression x 1/2" FIP x 20" length
- V3-20AM F 1/2" compression x 1/2" FIP metal nut x 20" length
- V3-36A F 1/2" compression x 1/2" FIP x 36" length
- V3-36AM F 1/2" compression x 1/2" FIP metal nut x 36" length
- V3-48A F 1/2" compression x 1/2" FIP x 48" length



PART DIMENSIONS (Inches)	
Model	DIM. A
V1-12A	12.0 / 13.0
V1-12AM	12.0 / 13.0
V1-16A	16.0 / 17.0
V1-16AM	16.0 / 17.0
V1-20A	20.0 / 21.0
V1-20AM	20.0 / 21.0

PART DIMENSIONS (Inches)	
Model	DIM. A
V1-30A	30.0 / 31.0
V1-30AM	30.0 / 31.0
V1-36A	36.0 / 37.0
V1-36AM	36.0 / 37.0
V3-12A	12.0 / 13.0
V3-12AM	12.0 / 13.0

PART DIMENSIONS (Inches)	
Model	DIM. A
V3-16A	16.0 / 17.0
V3-16AM	16.0 / 17.0
V3-20A	20.0 / 21.0
V3-20AM	20.0 / 21.0
V3-36A	36.0 / 37.0
V3-36AM	36.0 / 37.0
V3-48A	48.0 / 49.0

Listings & Certifications:

- IAPMO listed to ASME A112.18.6 and CSA B125.6 (includes NSF/ANSI 372 and NSF/ANSI/CAN 61)



This specification and all information contained herein is the confidential and exclusive property of Brasscraft Manufacturing Company and shall not be disclosed to others without the written consent of Brasscraft Mfg. Co. This specification must be returned to Brasscraft Mfg. Co. if requested.