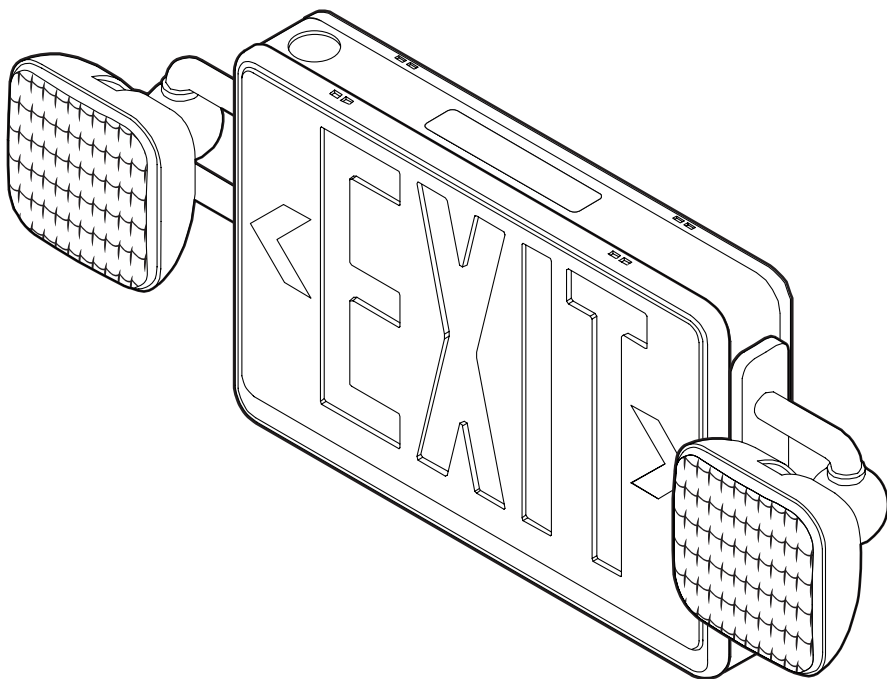


# USE AND CARE GUIDE

---

## DUAL COLOR LED EXIT/EMERGENCY LIGHT



Questions, problems, missing parts? Before returning to the store,  
call Commercial Electric Customer Service  
8 a.m. - 7 p.m., EST, Monday - Friday, 9 a.m. - 6 p.m., EST, Saturday

1-877-527-0313

[HOMEDEPOT.COM](http://HOMEDEPOT.COM)

---

### THANK YOU

*We appreciate the trust and confidence you have placed in Commercial Electric through the purchase of this emergency light. We strive to continually create quality products designed to enhance your home. Visit us online to see our full line of products available for your home improvement needs. Thank you for choosing Commercial Electric!*

# Table of Contents

Safety Information.....	2
Warranty.....	2
Pre-Installation.....	3
Installation.....	5

Maintenance.....	7
Battery Replacement.....	8
Troubleshooting.....	8

## Safety Information

### IMPORTANT SAFEGUARDS. READ AND FOLLOW ALL SAFETY INSTRUCTIONS.

When using electrical equipment, basic safety precautions should always be followed including the following:

- Make all electrical connections in accordance with local codes, ordinances, and the National Electric Code.
- This product is for indoor use only.
- Do not mount this product near a gas or electric heater.
- Use caution when servicing batteries. Battery acid can cause burns to skin and eyes. If acid is spilled on skin or eyes, flush acid with fresh water and contact a physician immediately.
- This product should be mounted in a location and at a height where it will not be readily subjected to tampering by unauthorized personnel.
- The use of accessories is not recommended by the manufacturer, and may cause unsafe conditions.
- Do not use this product for anything other than its intended use.
- All service shall be performed by qualified service personnel. This product must be installed and maintained in accordance with the applicable installation codes by a person familiar with the construction operation of the product and the hazards involved.
- Maximum mounting height is 35.31 ft (10.76 m) or the equivalent.



**WARNING:** Before beginning installation, turn off electricity by removing the fuse or turning off the circuit breaker.



**WARNING:** Disconnect power before servicing the product. All service should be performed by a qualified electrician.



**WARNING:** Changes or modifications to this unit not expressly approved by the party responsible for compliance could void the user's authority to operate the equipment.

**NOTICE:** This equipment has been tested and found to comply with the limits for a Class B digital device, pursuant to Part 15 of the FCC Rules. These limits are designed to provide reasonable protection against harmful interference in a residential installation. This equipment generates, uses and can radiate radio frequency energy and, if not installed and used in accordance with the instructions, may cause harmful interference to radio communications. However, there is no guarantee that interference will not occur in a particular installation. If this equipment does cause harmful interference to radio or television reception, which can be determined by turning the equipment off and on, the user is encouraged to try to correct the interference by one or more of the following measures:

- Reorient or relocate the receiving antenna.
- Increase the separation between the equipment and receiver.
- Connect the equipment into an outlet on a circuit different from that to which the receiver is connected.
- Consult the dealer or an experienced radio/TV technician for help.

## SAVE THESE INSTRUCTIONS

## Warranty

### WHAT IS COVERED

The manufacturer warrants this lighting fixture to be free from defects in materials and workmanship for a period of five (5) years, and five (5) years for the battery, from date of purchase. This warranty applies only to the original consumer purchaser and only to products used in normal use and service. If this product is found to be defective, the manufacturer's only obligation, and your exclusive remedy, is the repair or replacement of the product at the manufacturer's discretion, provided that the product has not been damaged through misuse, abuse, accident, modifications, alterations, neglect, or mishandling.

### WHAT IS NOT COVERED

This warranty shall not apply to any product that is found to have been improperly installed, set-up, or used in any way not in accordance with the instructions supplied with the product. This warranty shall not apply to a failure of the product as a result of an accident, misuse, abuse negligence, alteration, faulty installation, or any other failure not relating to faulty material or workmanship. This warranty shall not apply to the finish on any portion of the product, such as surface and/or weathering, as this is considered normal wear and tear.

The manufacturer does not warrant and specifically disclaims any warranty, weather express or implied, of fitness for a particular purpose, other than the warranty contained herein. The manufacturer specifically disclaims and liability and shall not be liable for any consequential or incidental loss or damage, including but not limited to any labor / expense costs involved in the replacement or repair of said product.

Contact the Customer Service Team at 1-877-527-0313 or visit [www.HomeDepot.com](http://www.HomeDepot.com).

# Pre-Installation



**IMPORTANT:** When constructing or remodeling and prior to installing, be sure to check with the local fire marshal or code enforcement office to ensure the correct color guidelines for your municipality are being followed.

## PLANNING INSTALLATION

Before beginning assembly, installation, or operation of the product, make sure all parts are present. Compare parts with the package contents list. If any part is missing or damaged, do not attempt to assemble, install, or operate the product. Contact customer service for replacement parts.



**NOTE:** Keep your receipt and these instructions for proof of purchase.

## TOOLS REQUIRED



Philips screwdriver



Wire strippers



Safety glasses



Power drill



Flat screwdriver



Wire cutters



Ladder

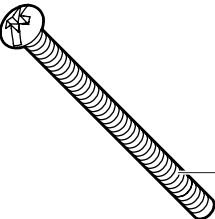


3/16" Drill bit

## HARDWARE INCLUDED



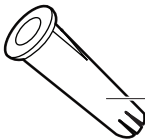
**NOTE:** Hardware not shown to actual size.



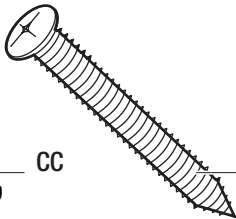
AA



BB



CC

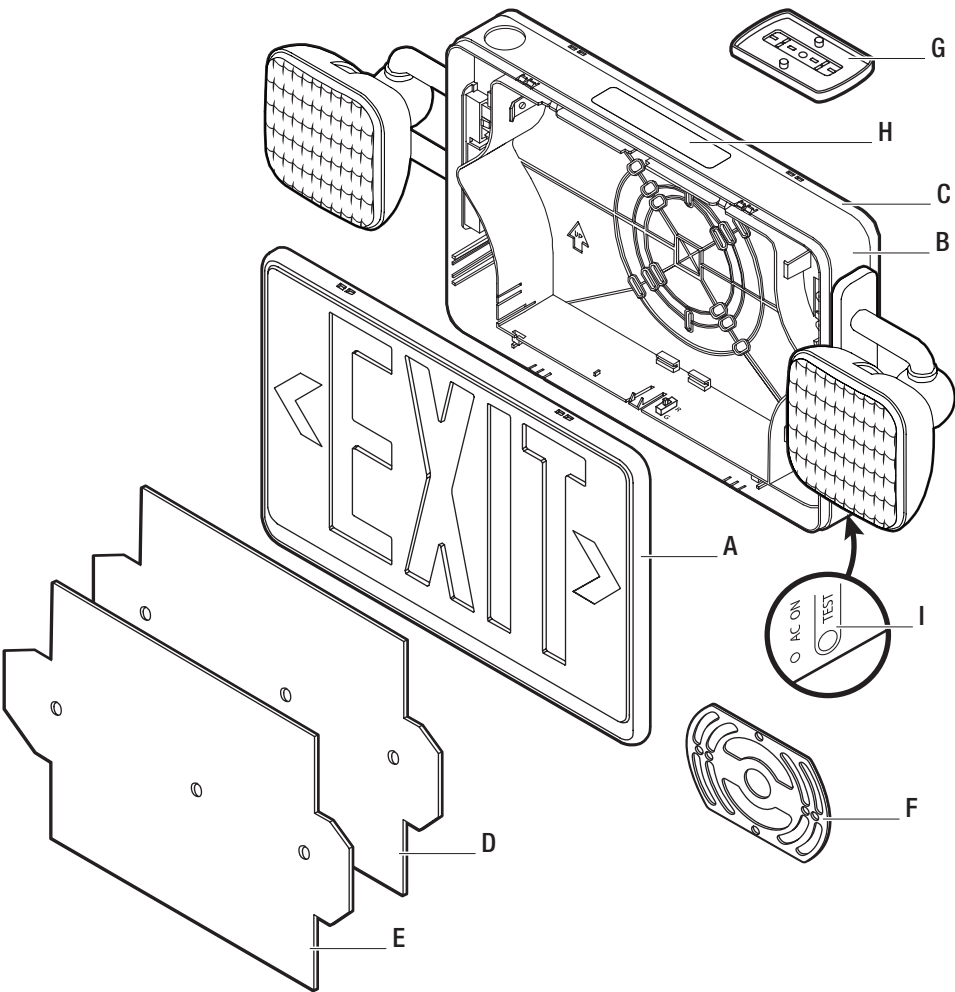


DD

Part	Description	Quantity
AA	Canopy screw	2
BB	Wire nut	3
CC	Wall anchor	2
DD	Mounting screw	2

# Pre-Installation (continued)

## PACKAGE CONTENTS



Part	Description	Quantity
A	Face plate	2
B	Exit/emergency light frame	1
C	Back plate	1
D	Red lens	2
E	Green lens	2
F	JBOX mounting plate	1
G	Canopy	1
H	Top mount access cap	1
I	Test button	1

# Installation

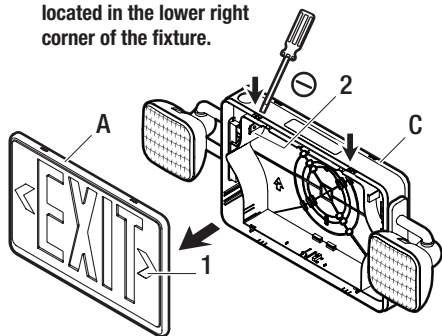
## 1 Preparing the exit/emergency light

- Remove the faceplate (A) using a flat screwdriver.
- Remove the appropriate arrow(s) (1) to indicate the direction of the exit.
- For double-sided applications, locate the lock tabs (2) and remove the backplate (C) and replace it with the second faceplate (A).
- If using this fixture with the green faceplate, follow "2 Changing the color" before replacing the rear faceplate



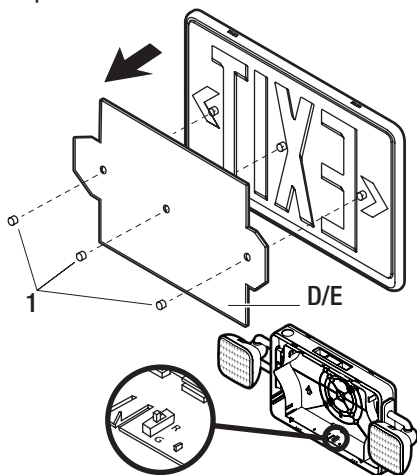
**NOTE:** Double-sided applications can only be used with a ceiling mount.

- Plug in the back-up battery to the terminal located in the lower right corner of the fixture.



## 2 Changing the color (optional)

- Remove the placard buttons (1) by twisting them back and forth while pulling up. Remove the preinstalled red lens.
- Insert the green lens (E) and replace the placard buttons by pressing them into place.
- Move the color selection switch to the "G" position.

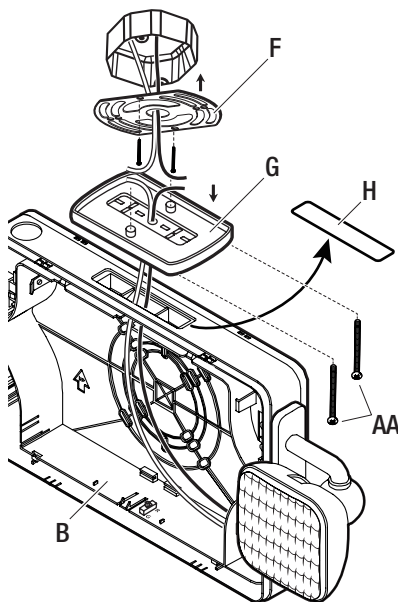


## 3 Installing the exit/emergency light on a ceiling



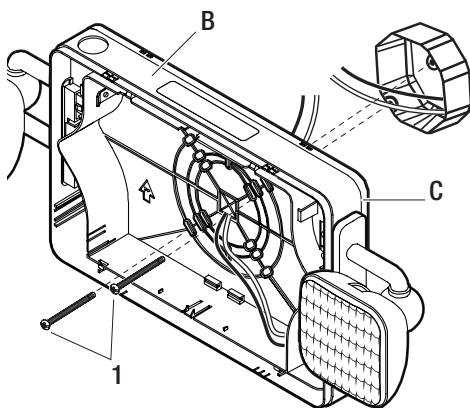
**NOTE:** For wall mount applications proceed to Step 4.

- Remove the top mount access cap (H) by pushing up from the underside.
- Pull the power supply wires from the junction box through the center hole of the JBOX mounting plate (F). Attach the JBOX mounting plate (F) to the junction box using the junction box screws (not included).
- Feed the fixture wires through the top mounting hole and through the center hole of the canopy.
- Align and insert the canopy (G) into the mounting hole on the exit/emergency light frame (B). Apply pressure to the canopy (G) until it locks into the exit/emergency light frame (B).
- Connect the wiring. Refer to "6 Connecting the wiring". Feed the wire nuts back through the center hole of the JBOX mounting plate (F) into the junction box.
- Thread the screws (AA) through the screw holes in the canopy (G) and attach the canopy to the JBOX mounting plate (F).



### 4 Installing the exit/emergency light to the wall

- Punch out the appropriate mounting pattern and wire hole on the backplate (C) to fit the junction box. Feed the wires through the wire hole.
- Connect the wiring. Refer to “6 Connecting the wiring”.
- Secure the frame (B) to the junction box using the junction box screws (not included) (1).

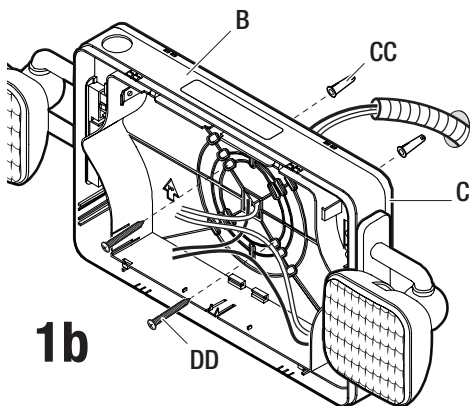
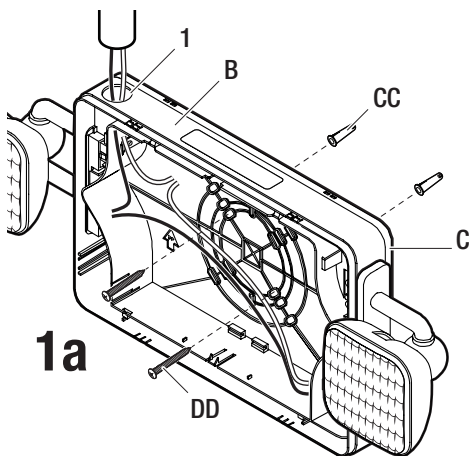


### 5 Installing the exit/emergency light with conduit



**WARNING:** This product must be installed in accordance with the applicable building codes, electric codes and ordinances. Be sure to comply with your local and state regulations. It is recommended that this product be installed be by a licensed electrician or by qualified service personnel.

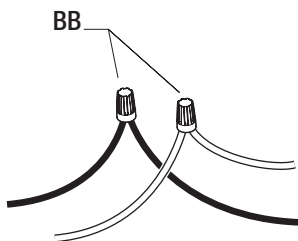
- Route the conduit power supply wires through the conduit knockout (1) (1a) or through the rear of the backplate (C) (1b) and make the conduit connection.
- Connect the wiring. Refer to “6 Connecting the wiring”.
- Using the backplate (C) as a template, mark and drill two installation holes on the wall at the desired installation location.
- Insert wall anchors (CC) into the holes.
- Attach the backplate (C) to the wall by inserting screws (DD) through the backplate (C) and into the wall anchors (DD).



## Installation (continued)

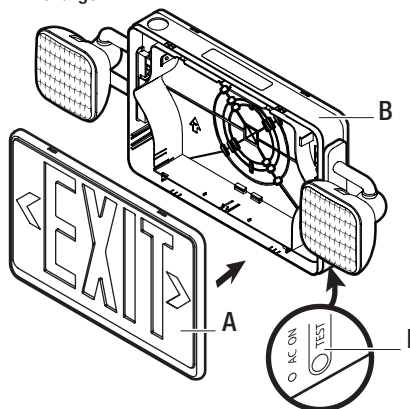
### 6 Connecting the wiring

- Make wire connections using the wire nuts (BB).
- For 120 V applications, use the black and white wires. Connect the black supply wire to the black fixture wire. Connect the white supply wire to the white fixture wire.
- For 277 V applications, use the red and white wires. Connect the red supply wire to the red fixture wire. Connect the white supply wire to the white fixture wire.
- Cap unused wires using a wire nut (BB).



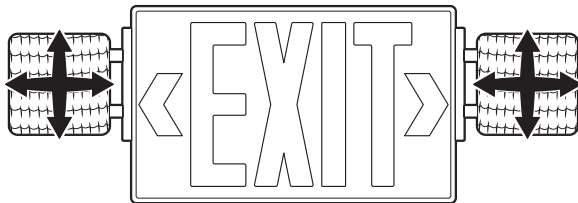
### 7 Completing the installation

- Snap the faceplate(s) (A) onto the frame (B).
- Restore power to the fixture. The Test button/AC Power light (I) and the exit light should illuminate.
- Allow 24 hours for the back-up battery to fully charge.



### 8 Adjusting the heads

- Position the emergency heads as needed to maximize the illumination of the exit path.



## Maintenance



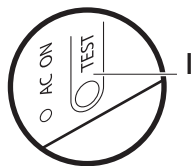
**NOTE:** National Electric Code (NEC) and NFPA life safety code regulations require that routine tests need to be performed.

### TESTING OPERATION

With AC Power applied to the unit, the EXIT sign and A/C Power LED indicator should illuminate. When pushing the TEST button (I), the LED indicator should turn off, the EXIT sign will remain illuminated and the emergency heads will illuminate.

### TESTING THE BATTERY

Test the unit's battery once per month. Additionally, every 12 months, a full 90-minute test should be performed. While disconnected from the main power supply, the EXIT sign and emergency heads should illuminate for a minimum of 90 minutes on battery back up power.

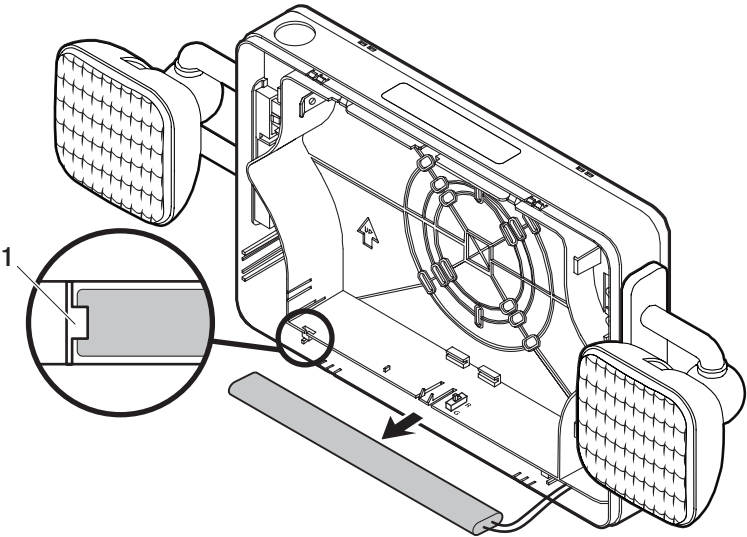


# Battery Replacement

This fixture uses a Ni-Cd Rechargeable AA700 mAh 9.6 V battery.

To remove the battery:

- Bend the battery catches away from the battery and remove the battery from the housing.
- Disconnect the battery leads from the board terminal.
- Connect the new battery to the board terminal.
- Place the new battery in the battery location and ensure it is seated behind the battery catches (1).



# Troubleshooting

Problem	Possible Cause	Solution
The LED charge indicator does not illuminate.	AC power supply is off.	Ensure the unit has AC power supply. Restore the power at the breaker/fuse box.
	The unit is incorrectly wired.	Ensure the unit is wired correctly.
	The battery isn't connected.	Ensure the battery is connected.
The LED emergency heads do not illuminate.	The battery is discharged.	Verify the unit is properly wired and connected to an AC power source. Allow the unit to charge for 24 hours and then re-test.
	The battery isn't connected.	Ensure the battery is connected.

If the above troubleshooting does not resolve the issue, contact a qualified electrician, or call Commercial Electric customer service at 1-877-527-0313.





Questions, problems, missing parts? Before returning to the store,  
call Commercial Electric Customer Service  
8 a.m. - 7 p.m., EST, Monday-Friday, 9 a.m. - 6 p.m., EST, Saturday

**1-877-527-0313**

**HOMEDEPOT.COM**

Retain this manual for future use.