



## Installation Instructions Cork Flooring Click Lock

Visit [homelegend.com](http://homelegend.com) for latest version of installation instructions.

Products Included	Approved Grade Levels	Approved Installation Method
Cork flooring with click and lock edges profile.	Above Grade. On Grade. Below Grade.	Primary Method: Floating Secondary Method: Full Spread Glue.

### CAUTION: CALIFORNIA RESIDENTS

This product can create wood dust and emit formaldehyde of which are known to the State of California to cause cancer.

### CAUTION: ASBESTOS IN EXISTING FLOOR

**Home Legend product does not contain asbestos.** Existing installed resilient flooring and asphaltic adhesive may contain **asbestos fillers or crystalline silica**. Do not sand, dry sweep, dry scrape, drill, saw, bead-blast, or mechanically chip or pulverize existing resilient flooring, backing, lining felt, asphaltic “cutback” adhesive or other adhesive. See “Recommended Work Practices for Removal of Resilient Floor Coverings” ([rfci.com](http://rfci.com)) for detailed information and instructions on removing all resilient covering structures.

### CAUTION: WOOD DUST

Sawing, sanding and machining this product can produce wood dust. It can cause respiratory, skin and eye irritation. Avoid prolonged exposure to wood dust. Power tools should be equipped with a dust collector. If possible, perform wood dust generating activities outdoors. If high dust levels are encountered, use an appropriate NIOSH-designated dust mask.

### Owner/Installer Responsibility

The owner is advised to be at home during the installation for consultation/direction. The owner and installer should discuss installation and layout to maximize satisfaction. If this is not possible, consultation should be done prior to installation.

The owner/installer assumes all responsibility for product quality of completed installation.

**PERFORM PRE-INSTALL INSPECTION. FOR CLAIMS PURPOSES, YOU ARE ALLOWED TO OPEN UP TO 4 BOXES FOR PRODUCT INSPECTION. DO NOT OPEN ALL THE BOXES. OPENING ALL THE BOXES CONSTITUTES YOUR ACCEPTANCE OF THE PRODUCT. INSPECT ALL THE PLANKS IN THESE 4 BOXES CAREFULLY. EXAMINE FLOORING FOR COLOR, FINISH AND QUALITY. IF YOU DISCOVER THAT PRODUCTS ARE DEFECTIVE, OR IF MATERIAL IS QUESTIONABLE, YOU SHOULD CONTACT THE RETAILER. IF YOU ARE SATISFIED, PROCEED WITH INSTALLATION.**

Flooring to be installed in one large area should be purchased at the same time. Product purchased at a later time than the first purchase may vary beyond your expectations.

Accessories, trims and moldings are manufactured to coordinate with the varied appearances of the floor planks. Any exact matches are coincident. Non-matching accessories are not defective products.

This product is manufactured according to strict quality standards. In the event that defects are discovered in the field, the industry standards permit a defect tolerance not to exceed 5%. The defects may be of any type, whether manufactured or natural. Order an additional 5% extra for cutting wastage and grading allowances (10% for diagonal installations).

During installation, inspect the planks continuously. Defects that can be seen from a standing position should be cut off or held out.

Installing defective planks implies acceptance.

Squeaking and clicking noises are the result of interactions among flooring, joists and subfloors when they move. Limiting the movements of the flooring system usually eliminates most of these noises. Sometimes, it is impossible to eliminate them completely and minor squeaking or clicking noises are to be accepted as normal flooring phenomenon. Minor scratches can generally be repaired with the use of putty, stain or filler. It is an industry standard practice of flooring installation and it should be accepted as normal by the home owner.

### If You Need More Information

To assure the warranty is not inadvertently voided, before proceeding with any activity that is not covered in this manual, please contact our Technical Support Department.

### Acclimation and In-service Conditions

This product does not require acclimation provided there are no extreme temperature and humidity differences between warehouse retailer, transportation and final installation site, i.e., temperature of no less than 60°F at any location and no more than 20% Relative Humidity difference between locations. Conditions in which the floor was installed should be maintained continuously thereafter.

Acceptable in-service temperature range is 60°F-80°F and relative humidity (RH) of 35%-60%. Document as much installation conditions as possible below.

Date: _____		
Relative Humidity (%): _____		
Temperature (°F): _____		
Subfloor Type: _____		
Subfloor Avg. Moisture Content (%): _____		
Acclimation Period: _____		

**Job Site Condition**

Prior to installation, the installer must ensure that at the time of installation, the job site conditions including subfloor/substrate, ambient temperature and relative humidity, and all impacting variables will not negatively affect floor. Home Legend will decline responsibility for damages associated with improper installation or poor site conditions.

**Storage and Conditions**

Do not store flooring in uncontrolled environmental conditions. For example, garages and exterior patios are not acceptable areas to store flooring. Handle and unload flooring with care and store within the environmentally controlled site in which it is expected to perform. Flooring stored on concrete slab should be elevated at least four inches to allow air circulation under cartons.

**Existing Home**

Existing home should have a consistent room temperature of 60°F-80°F and relative humidity (RH) of 35%-60%. Continual extreme deviation from these conditions will affect the dimensions of flooring. During heating season, humidity may be much lower than the acceptable range. During the heating season, a humidifier is recommended to prevent excess shrinkage in flooring due to low humidity levels. During the non-heating season, humidity levels can be maintained by using an air conditioner, dehumidifier, or by turning on your heating system periodically.

**New Construction or Remodel**

All work involving water, such as pouring basement concrete floors, drywall and plasterwork, plumbing, etc. must be completed well in advance of the floor delivery. Ensure that the building is enclosed. Where building codes allow, permanent heating and/or air conditioning systems should be operating at least five days preceding installation (this will promote proper acclimation if necessary) and should be maintained during and after installation. If it is not possible for the permanent heating and/or air conditioning system to be operating before, during and after installation, a temporary heating and/or dehumidification system that simulate normal living (occupied) conditions can enable the installation to proceed until the permanent heating and/or air conditioning system is fully operational.

Your job site should have a consistent temperature of 60°F-80°F and relative humidity (RH) of 35%-60% which should be maintained continuously thereafter.

**Basements and Crawl Spaces**

Concrete slab or ground must be dry. The ground in the crawl spaces must be completely covered using 6 mil black polyethylene. Crawl space clearance between the earth and underside of joists should be no less than 18 inches and the perimeter vent area should be equal to 1.5% of the total square footage of the crawl space or as mandated by code.

**Concrete Subfloor Requirements**

It must have minimum rated strength of 3000 psi.

It must be level to within 1/8" in a 6 foot span or 3/16" in a 10 foot span; no bumps or low spots. High spots can be removed by grinding; Gaps greater than 5/32" wide and 1/16" depressions should be filled with patching compound formulated for use in floor installation.

It must be clean; no construction debris, soil, mud and any other objects on or adhering to the floor; if necessary, scrape and sweep away before the installation; no protrusions of nails, debris, metals should remain.

New concrete slab must cure for at least 60 days. It must have a minimum 10 mil polyethylene sheet between the ground and the concrete. It must meet concrete moisture requirement below.

It must be free from moisture related conditions which can damage the installed flooring.

**Light Weight Concrete**

It is concrete which rated strength is less than 3000 psi.

Perform a quick check by drawing a nail across the top; if it leaves indentation, it is probably light concrete.

For glue-down application, the concrete must possess shear strength greater than the glue. If concrete rated psi is unknown, contact the adhesive manufacturer for guidance.

**Concrete Moisture**

All concrete subfloors should be tested for moisture content and the results documented. Visual checks are not reliable. Perform tests at locations around exterior doorways, near walls containing plumbing, near foundation walls and in the center of the room. Minimum sample size is 3 samples per 1000 square feet of area and one test for every additional 1000 square feet thereafter.

Its moisture content should meet one of the following criteria below:

- 5% when tested using Tramex Concrete Moisture Encounter
- Less than 3 pounds per 1000 square feet per 24 hours when using Calcium Chloride test (ASTM F 1869)
- 75% when using Relative Humidity Testing (ASTM F-2170).

Please note: Concrete moisture content may be acceptable the time of the test. These tests do not guarantee a perpetual “dry” concrete slab. The concrete slab moisture content can vary at other times of the year. We are not responsible for moisture related damage to installed flooring.

### **Wood Subfloor Requirements**

It must be clean; no presence of construction debris, soil, mud and any other objects on or adhering to the floor; no protrusions of nails, debris, metals should remain. If necessary, scrape and sweep the subfloor before the installation.

It must be structurally sound and stable; no movements or squeaks; no loose panels or loose nails; no signs of ply de-lamination or other damages. Repair all shortcomings before installation.

It must be flat; no visible bumps or low spots; the subfloor should be flat to within 1/8” in 6 feet span or 3/16” in 10 feet.

Test for moisture using reliable moisture meter. Perform tests at locations around exterior doorways, near foundation walls, near walls containing plumbing lines and in the center of the room. Measure 20 locations per 1000 square feet.

Moisture content of subfloor should be less than 14%.

#### *Plywood or Oriented Strand Board (OSB) Specifications*

On truss/joist spacing of 16” (406mm) O/C or less, the industry standard for single-panel subflooring is minimum 5/8” (19/32”, 15.1 mm) CD Exposure 1 plywood subfloor panels (CD Exposure 1) or 23/32” OSB Exposure 1 subfloor panels, 4’ x 8’ sheets. Expansion gap between panels should be 1/8” (3 mm). When subfloor panels spacing is inadequate, cut in the required spacing with a circular saw if the panels are not tongued and grooved. Do not cut in expansion space on joined tongue and groove of panels.

### **Particle Board or Fiber Board**

Only for floating installation.

### **Existing Floors**

Installation over existing floor requires the installer to consider potential issues related to moisture damage, adhesive failure and fastener failure. Contact the adhesive and fastener manufacturers respectively for their specific instructions, recommendations and requirements. Acceptable floor coverings include: solid hardwood, linoleum, terrazzo, ceramic tile and other “moisture sealing floors.”

Unacceptable floor coverings include: carpet, needle punch felt, edge glued linoleum and other “moisture absorbing flooring.”

### **Radiant Heated Subfloor**

This product can be installed over radiant heated subfloor. Operating surface temperature must be less than 84°F. Decrease temperature before installation. Increase temperature gradually after installation. Contact heater manufacturer for specific installation instruction.

### **Moisture Barrier and Moisture Retarder**

*Concrete Subfloor:* For floating installation, use 6 mil polyethylene film or other means with equivalent permeability. Overlap the edge seams and tape it together. If installed on above grade concrete and concrete moisture content meets concrete moisture standards, it does not require a moisture barrier. Extend moisture barrier up to the wall about 1 inch high. For direct glue installation, use moisture barrier if moisture level exceeds requirement (see Concrete Moisture section).

*Wood Subfloor:* Moisture retarder is optional.

### **Sound Control Underlayment**

It is optional. Check with sound control manufacturer for application guidelines. Generally, the less compressive underlayment is preferred.

### **Expansion Gap**

Required gap width range is 5/16” to 3/8”. It is required around the perimeter of the floor and between floor and all vertical obstructions. Do not place permanently mounted structures such as kitchen counter/cabinet on the installed floor.

### **Transition Molding**

Floating installation, transition T-molding is required in the following cases: floor spanning greater than 40 feet in length or width; doorways or passageways 5 ft. wide or less.

Note: Floor areas interrupted by wall openings greater than 5 ft. wide, or interrupted by wall sections extending out of the wall, or floor areas which are not rectangular may experience buckling or gapping if there is excessive floor expansion or shrinkage.

### **Wet Areas**

This product can be installed in kitchens, mud rooms, powder rooms, bathrooms and laundry rooms.

Do not install in saunas, swimming pool areas and other similar extreme wet areas.

Fill all expansion gaps with water repellant caulk. Do not allow water or liquids to remain on the floor and seep into the joints. To minimize moisture damage, we recommend applying a thin film of water repellant to joints between planks.

### **Adhesive**

Use premium flooring adhesive which is non-water based.

## Tools and Materials

### Basics:

Tape measure • Moisture meter (wood, concrete or both) • Chalk line & chalk • Hammer • Electric power saw • Carbide tipped saw blade for fine cut • NIOSH-designated dust mask • Hand saw or jamb saw • Eye protection • Straight edge or Spacers • Pry Bar • Mallet • Broom • Color matched wood putty • Tapping block • Pull bar

### Additional Supplies for Glue-Down Method:

Flooring adhesive • Trowels • Adhesive remover for selected adhesive • Clean rags • Weight roller • 3M Blue tape

### Safety and Health Precautions

Power tools can be dangerous. Operate in strict accordance to manufacturer's operating instructions and safety precautions. Unsafe and improper use can cause serious injuries.

Avoid inhalation and exposures to wood dust by mechanical means and by wearing personal protective equipment.

Wear appropriate personal protective equipment (PPE) which include NIOSH or OSHA approve dust masks, safety goggle and work gloves.

### Bond Failure

Bond failure is NOT flooring product defect. Most installation failures, including bond failure, result from jobsite moisture. Do not unpack or deliver flooring to the jobsite until moisture problems are corrected. Read adhesive manufacturer's instruction carefully. Certain wood flooring adhesives may have special requirements and limitations of use. Some existing floor may not be acceptable. Not following the adhesive manufacturer's recommendations can lead to installation failure or product damage and will void your warranty.

### Glue Spots on Face of Finished Floor

Adhesive can damage the floor's finish, especially when it has dried. It is extremely important to take precautionary steps NOT to leave finger prints or footprints marks on the face of the board. If glue comes in contact with the face of the board, remove immediately with the adhesive remover recommended by the adhesive manufacturer. Use clean towels, changing frequently to prevent haze and adhesive residue. If the spot removal damages the appearance of the boards, replace the board.

### Helpful Pointers

#### General Tips

- Make sure your work area is well lit. Good visibility ensures that color is consistent and that visually defective planks are detected and removed.
- Preferred minimum length of the first and last plank is 12". The remainder of the last plank can be used as a starter board on the following rows.
- Using a shorter piece at undercut door jams will help when fitting flooring in place.

#### Glue-Down Installation Tips

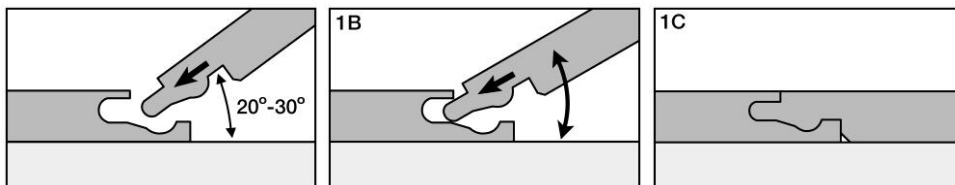
- ALWAYS REFER TO THE SPECIFIC INSTRUCTIONS ON THE FLOORING ADHESIVE LABEL. The information given here is for typical installation. Adjust it according to adhesive manufacturer's instruction.
- Dry-lay means the glue has to set before placing floor planks in it. Wet-lay means the glue does not need to set before placing floor on it.
- Use trowel design as specified by adhesive manufacturer.
- Continuously check the transfer of adhesive THROUGHOUT the installation process. If the adhesive no longer transfers to the back of the flooring material, it must be removed and new adhesive applied.
- Work your way out of the room.
- After the installation is completed, keep the floor free from daily foot traffic for a minimum of 24 hours to allow adhesive to properly cure.

#### Cutting the Last Row to Width

- Most often the entire length of the last row will need to be cut so that it is narrow enough to fit the remaining space.
- Measure the distance between the floor face edge (exclude the tongue) to the wall. Subtract  $5/16'' - 3/8''$  from this measurement for expansion gap. Draw a line. Cut through the line. Discard the excess piece. Proceed with installation.

### Click Lock Technique

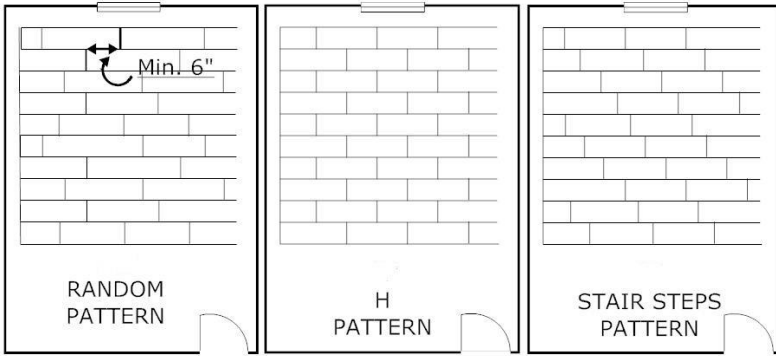
Position the second panel in the groove of the first panel at a 20° or 30° angle. Move the panel gently up and down while exerting pressure toward the first panel. The panel will automatically lock into place. See diagrams below.



## Floating Installation Procedure

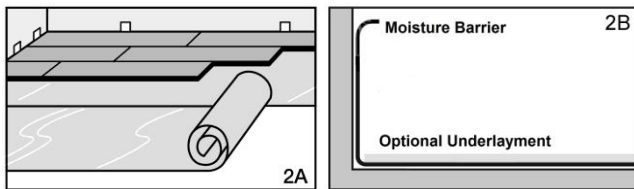
### Step 1 - Pre-install Activities

- Rack up planks from several boxes.
- Ensure that end joints are staggered at least 6" between the rows. Random or repeat pattern is a matter of preference See diagram below.
- Inspect product for defects. If material is questionable, contact the retailer immediately. Do not proceed with installation



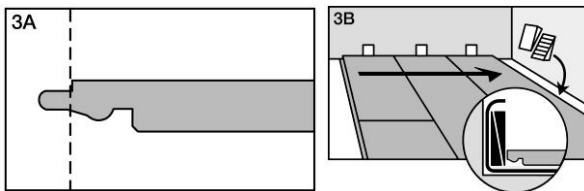
### Step 2 – Install Moisture Barrier (if on concrete) and Optional Underlayment if selected.

- For concrete, let the moisture barrier run up the wall a bit before cutting to size.
- Install the underlayment on top of the moisture barrier. Cut 1 inch from the wall. See diagrams below.



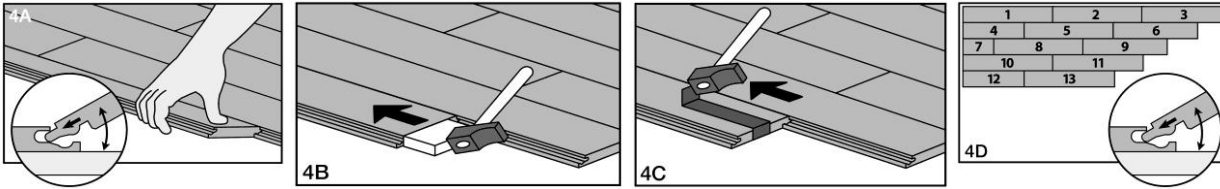
### Step 3 – Install the First Row

- Saw off the tongue from the length and width of the first plank. Create expansion gap by placing spacers between the planks and the walls for expansion.
- Saw off the tongues from only the length of the remaining planks to be installed in the first row..
- Use the angling method to connect and lock the joints between the planks. Remember to use the spacer for maintaining expansion gap. See diagrams below.



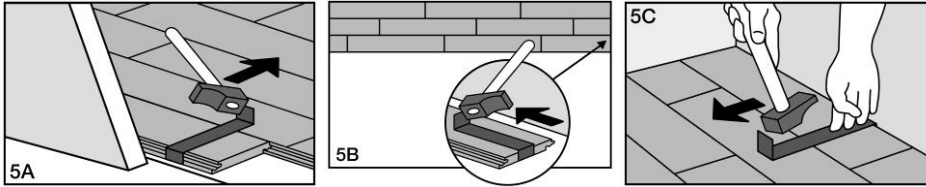
### Step 4 – Install the Remaining Rows

- Stagger the end joints by at least 6 inches. Use angling method to lock the joint along the long edge.
- Use the angling technique to lock the long edge together.
- Use either the tapping block or pull bar to drive the next plank toward the first plank until the end joints are locked.
- Repeat the steps until the row is complete. See diagrams below.



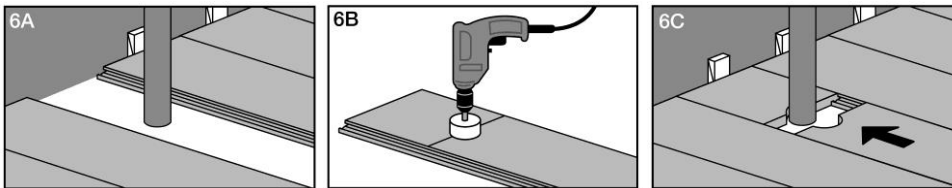
### Step 5 – Tight Spaces

- In tight spaces use the pull bar and a hammer. See diagrams below.



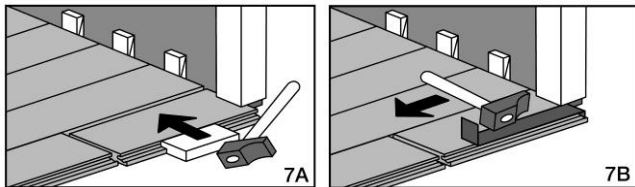
### Step 6 – Pipes

- Expansion gaps around vertical pipes is created by drilling a hole through a locked ends joint.
- Drill a hole the size of the diameter plus 3/4 inch for expansion.
- Separate the panels and rejoin them around the pipe. See diagrams.



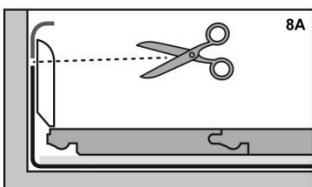
### Step 7 - Under Door Frames

- Ensure a 3/8 inch expansion gap between floor and door jamb.
- Use a tapping block and a hammer, or a pull bar and a hammer. See diagrams.



### Step 8 – Finishing Touches

- Clean the floor.
- Remove all spacers.
- Install the molding on the plastic membrane that runs up the wall from under the floor. Never fasten the molding to the floor.
- Caulk around pipes and in places where molding cannot be installed.
- Use matching putty where necessary
- Install or reinstall all wall trim pieces. Nail them through the wall, but not to the subfloor to avoid restricting the expansion gap.
- Install transition trim pieces. Nail them to the subfloor, not the flooring.
- At doorways, transitions should be used to protect the edges of the floor and to provide a decorative transition from one floor type to another.
- If the floor is to be covered, use a breathable material such as cardboard. Do not cover with plastic



## Glue Down Installation Procedure

**PLEASE NOTE:**

**ANY EXCESS GLUE WHICH GETS ONTO THE SURFACE OF THE FLOOR MUST BE REMOVED IMMEDIATELY WITH ADHESIVE REMOVER**

The steps in glue down method are very similar to the floating installation method. The only difference is the application of the glue to the subfloor prior to installation. For more detail instruction, see the floating installation section above

Step 1 – Make sure the flooring does not have an attached underlayment. Flooring with attached underlayment cannot be glued down.

Step 2 – Read ALL adhesive manufacturers instruction.

Step 3 – Read the Glue Down Installation Tips in Helpful Pointers section.

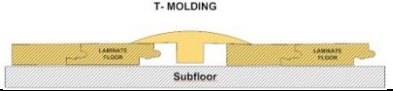
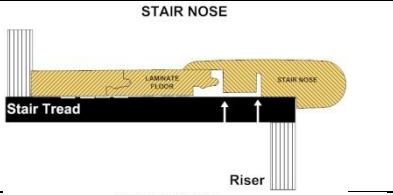
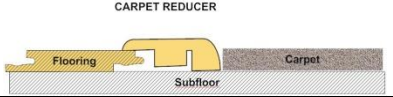
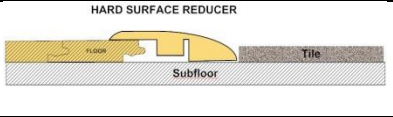
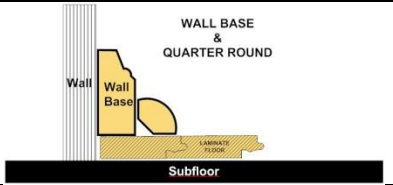
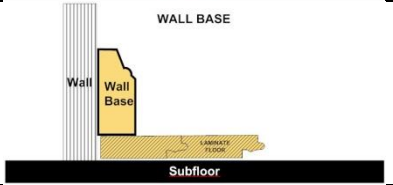
Step 4 – Spread the glue

- Spread the glue from the starting line out in the direction of the center of the room, the width of two planks. Or spread only enough glue to install what can be set within 45 minutes (15 minutes of OPEN TIME and an additional 30 minutes for actual installation. Usually about two rows width coverage). Different manufacturer may require different open time and set time.
- Repeat with the next two rows, etc.

Step 5 – Begin installation in the same way as floating installation. From beginning to finishing touch.

**Accessories**

Pictures are for illustrative purposes only. Actual product may differ from pictures.

 <p>T-MOLDING</p>	<p>T-Molding is used to create a transition between floor coverings of similar heights or to cover an expansion gap.</p>
 <p>STAIR NOSE</p>	<p>Stair Nose is used in conjunction with flooring installed on stair steps or finished edge of a higher level floor like in a sunken living room.</p>
 <p>CARPET REDUCER</p>	<p>Carpet Reducer (also called Baby Threshold or End Cap) is used to transition floor coverings of differing heights. This reducer strip is also commonly used to border a fireplace, sliding glass door and other exterior door jambs.</p>
 <p>HARD SURFACE REDUCER</p>	<p>Hard Surface Reducer is used to transition to another hard surface flooring of different heights such as tile, vinyl, concrete.</p>
 <p>WALL BASE &amp; QUARTER ROUND</p>	<p>Quarter Round is used to cover the expansion space between the Wall Base and your flooring. It can also be used them to make smooth transitions between the floor and cabinetry. It can be used with or without Wall Base molding.</p>
 <p>WALL BASE</p>	<p>Wall Base is used to give a finished look at the base of the walls. It can be used with or without Quarter Round.</p>

**Technical Support**

For installation information and technical questions not covered in this installation guide, please contact our Technical Support Representative by calling the toll free number below.

**Toll Free Number: 877-630-1800**



## Care and Maintenance

### *Daily Maintenance*

1. Sweep dust mop or vacuum your floor regularly to remove any particles that could cause abrasion or scratch your floor. CAUTION: Vacuums with a beater bar or power rotary brush head can damage a floor and should never be used.
2. Use a damp mop to remove spots and soil. Apply appropriate cleaning solution to the cleaning cloth / mop. Do NOT apply directly to the floor.
  - For lightly soiled area, clean with distilled water.
  - For moderately soiled area, use a mild solution of isopropyl alcohol and distilled water. Isopropyl alcohol is commonly referred to as rubbing alcohol and is sold in 50% to 70% concentrations. This product should be diluted by mixing one part alcohol and 2 parts distilled water.
  - For tougher spots, use a higher concentration of isopropyl alcohol and distilled water.
  - For extreme cases, a solution of nail polish remover (acetone) and distilled water can be used.

HINT: For best results, clean the floor in the same direction of the planks. When the cleaning cloth/mop becomes soiled, rinse or replace it with a clean one. Following up with a clean, dry cloth will remove residual streak marks and spots.

3. Do NOT leave any amount of liquids (water, juice, soft drinks, spills, etc.) on the floor. Clean any wet spots immediately.
4. Do NOT use a steam cleaner.
5. Do NOT use a wet mop or douse floor with water or liquid cleaners. Liquid can seep between the cracks and cause moisture damage.
6. Do NOT use any cleaning agents containing wax, oil or polish. Left over residue will form a dull film.
7. Do NOT use steel wool or scouring powder which will scratch the floor.

### *Branded or Off-the-shelf Floor Care Products*

- If none of the above are effective and you choose to use a store bought product, test the product in a non-conspicuous area (i.e., closet, corner, or scrap pieces) for potential adverse side effects.

### *Preventative Maintenance*

- Protect your floor when using a dolly for moving furniture or appliances. Protective sheets and/or plywood may be needed. Never slide or roll heavy furniture or appliances across the floor.
- Place protective pads beneath furniture legs and other heavy objects.
- Avoid excessive exposure to water from being tracked in during periods of inclement weather.
- Minimize abrasive material and dirt by placing mats on both sides of exterior doors and by using area rugs in high-traffic areas
- Rearrange furniture and rugs periodically to avoid uneven color and shade changes from light exposure.
- Use protective mats beneath rolling chairs and keep furniture casters clean.
- Keep pets' nails trimmed.
- Remove shoes with cleats, spikes or exceptionally pointy heels before walking on the floor.

### *Climate Maintenance*

- Care should be taken to control humidity levels within the 35% - 55% range. Flooring, especially hardwood and bamboo, dimensions will be affected by varying levels of humidity.
- Dry Climates: A humidifier is recommended to maintain humidity levels. Wood stoves and electric heat tend to create very dry conditions during the winter months this also will cause shrinkage in flooring.
- Humid, Wet Climates: By using an air conditioner, heater, or dehumidifier proper humidity levels can be maintained to prevent excessive expansion due to high moisture content.

### *Floor Repair*

- Very light and small surface scratches can be repaired with a staining "touch up" pen of the appropriate color.
- Slightly deeper scratches can be repaired by means of colored putty and or stains. Fill the scratches with the putty. Level with putty knife. Wipe off excess putty.
- Very deep scratches may require the replacement of the planks.

**Warranty**

This flooring product comes with a Home Legend Limited Wear Warranty. The warranty applies to original purchaser of the flooring. It warrants the original purchaser that the finish surface will not wear through for duration of the stated warranty from the date of purchase. Please contact our Customer Service Representative by calling our toll free number or send in the warranty registration below for a written copy which provides detail terms of coverage and limitations.

**WARRANTY REGISTRATION**

UPON RECEIPT OF THIS REGISTRATION FORM AND COPY OF RECEIPT, WE WILL SEND YOU A WRITTEN WARRANTY DOCUMENT. SEND THE COMPLETED FORM ALONG WITH A COPY OF PROOF OF PURCHASE TO:

HOME LEGEND, LLC  
WARRANTY REGISTRATION  
P.O. BOX 887  
ADAIRSVILLE , GA 30103

Customer Name	
Customer Address	
City, State, ZIP Code	
Phone/E-mail	
Product Model Number	
Product Description	
Date Purchase	
Retailer Name	
Retailer Address	
City, State, ZIP Code	
Installer	