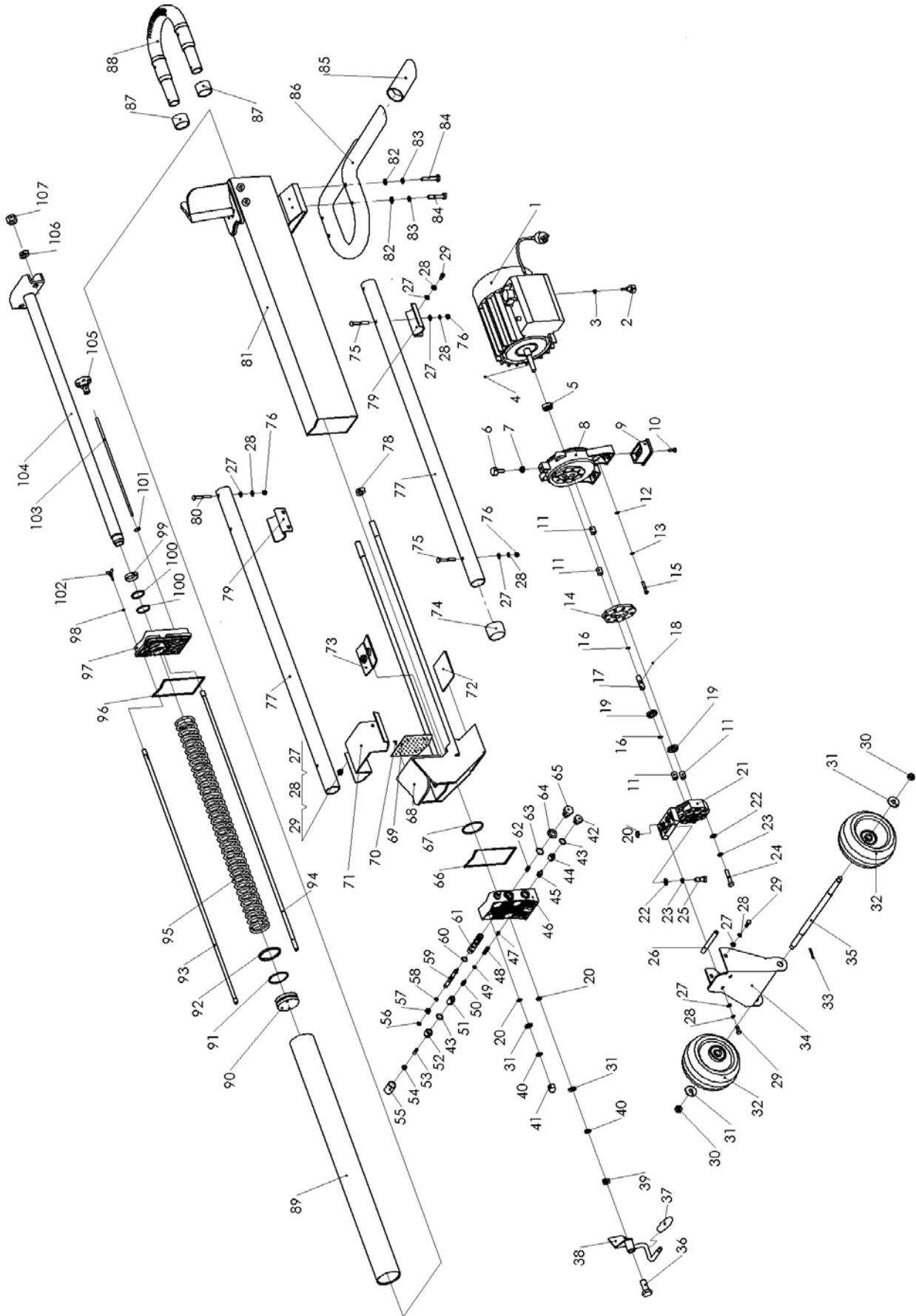


EXPLODED VIEW & PARTS LIST



Item	Stock #	Description	Qty
1	PS90-001	Motor	1
2	PS90-002	Rubber washer B	1
3	PS90-003	Nut M5	1
4	PS90-004	Column pin 2.5×4	1
5	PS90-005	Oil seal 11×26×7	1
6	PS90-006	Rubber washer A	1
7	PS90-007	Nut M8	1
8	PS90-008	Front cover	1
9	PS90-009	Front rubber feet	2
10	PS90-010	Bolt M6×12	2
11	PS90-011	Bushing	4
12	PS90-012	Flat washer 5	4
13	PS90-013	Spring washer 5	4
14	PS90-014	Clapboard	1
15	PS90-015	Bolt M5×25	4
16	PS90-016	Steel ring 10	2
17	PS90-017	Gear shaft	1
18	PS90-018	Steel ball 2.5	1
19	PS90-019	Gear	2
20	PS90-020	Oil seal 9.5×2.65G	6
21	PS90-021	Pump cover	1
22	PS90-022	Flat washer 8	9
23	PS90-023	Spring washer 8	9
24	PS90-024	Bolt M8×55	6
25	PS90-025	Bolt M8×30	3
26	PS90-026	Shaft	1
27	PS90-027	Flat washer 6	20
28	PS90-028	Spring washer 6	18
29	PS90-029	Bolt M6×12	10
30	PS90-030	Lock nut M10	2
31	PS90-031	Flat washer 10	8
32	PS90-032	Wheel	2
33	PS90-033	Cotter pin 3.2×20	1
34	PS90-034	Bracket for wheel	1
35	PS90-035	Wheel shaft	1
36	PS90-036	Bolt	1
37	PS90-037	Rubber sleeve	1
38	PS90-038	Hydraulic control lever	1
39	PS90-039	Nut M10	1
40	PS90-040	Spring washer 10	5
41	PS90-041	Nut M10	3
42	PS90-042	Hex Bolt A	1
43	PS90-043	Oil seal 11.8×1.8G	2
44	PS90-044	Hex Bolt	1
45	PS90-045	Oil valve	1
46	PS90-046	Front cover	1
47	PS90-047	Prick valve	1
48	PS90-048	Adjustment spring	1
49	PS90-049	Oil Seal 4.87×1.8G	2

Item	Stock #	Description	Qty
50	PS90-050	Shaft	1
51	PS90-051	Bush for shaft	1
52	PS90-052	Hex nut	1
53	PS90-053	Locked nut M6×20	1
54	PS90-054	Nut M6	1
55	PS90-055	Plastic cover	1
56	PS90-056	E-ring	1
57	PS90-057	Spring	1
58	PS90-058	Oil seal 5.6×1.8G	1
59	PS90-059	Journey valve	1
60	PS90-060	Oil seal 11.2×1.8G	5
61	PS90-061	Control valve (GS)	1
62	PS90-062	Spring II	1
63	PS90-063	Oil seal 14×1.8G	1
64	PS90-064	Copper washer 14	1
65	PS90-065	Orientation Bolt	1
66	PS90-066	Washer	1
67	PS90-067	Oil seal 48.7×3.55G	1
68	PS90-068	Push rod	1
69	PS90-069	Tine plate	1
70	PS90-070	Bolt M4×6	4
71	PS90-071	Front bracket	1
72	PS90-072	Down pad	1
73	PS90-073	Upper pad	1
74	PS90-074	Rubber plug	2
75	PS90-075	Bolt M6×50	4
76	PS90-076	Nut M6	6
77	PS90-077	Worktable guard	2
78	PS90-078	Nut M14	2
79	PS90-079	Bracket	2
80	PS90-080	Bolt M6×45	2
81	PS90-081	Cylinder body	1
82	PS90-082	Flat washer 8	4
83	PS90-083	Spring washer 8	4
84	PS90-084	Bolt M8×50	4
85	PS90-085	Rubber foot	2
86	PS90-086	Rear support	1
87	PS90-087	Plastic bush	2
88	PS90-088	Handle	1
89	PS90-089	Cylinder	1
90	PS90-090	Piston	1
91	PS90-091	Oil seal 46.2×3.55G	1
92	PS90-092	Piston ring	1
93	PS90-093	Stud B	3
94	PS90-094	Stud A	1
95	PS90-095	Spring	1
96	PS90-096	Gasket	1
97	PS90-097	Rear cover	1
98	PS90-098	Oil seal 3.6×1.8G	1

Item	Stock #	Description	Qty
99	PS90-099	Dustproof seal	1
100	PS90-100	Oil seal 30×2.65G	2
101	PS90-101	Oil seal 11.8×2.65G	1
102	PS90-102	Bleed screw	1
103	PS90-103	Dipstick	1
104	PS90-104	Piston bar	1
105	PS90-105	Knob	1
106	PS90-106	Nut M14	2
107	PS90-107	Lock nut M14	2