

## ***IMPORTANT:***

Clean the hood and grease filters frequently according to the following instructions.  
Replace panel filters before operating hood.

## **Exterior Surfaces**

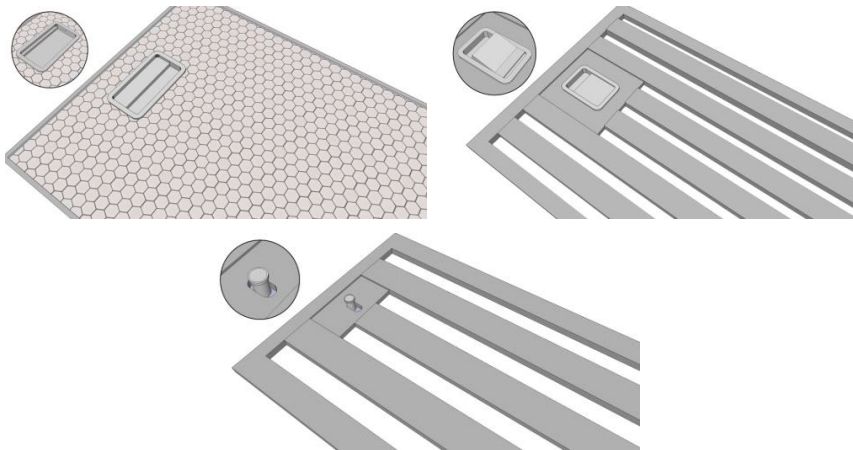
To avoid damage to the exterior surface, do not use steel wool or soap-filled scouring pads.  
Always wipe dry to avoid water marks.

## **Cleaning Method**

Use liquid detergent soap and water, or all-purpose cleanser.  
Wipe with damp soft cloth or non-abrasive sponge, then rinse with clean water and wipe dry.

## **Grease Filter and Baffle Filter**

1. Remove the filter by pulling the spring release handle and then pulling down the filter.



2. Wash metal filters as needed in dishwasher or hot detergent solution.

3. Reinstall the filter by making sure the spring release handles are toward the front. Insert aluminum filter into upper track.

4. Push the spring release handle.

5. Push up on metal filter and release handle to latch into place.