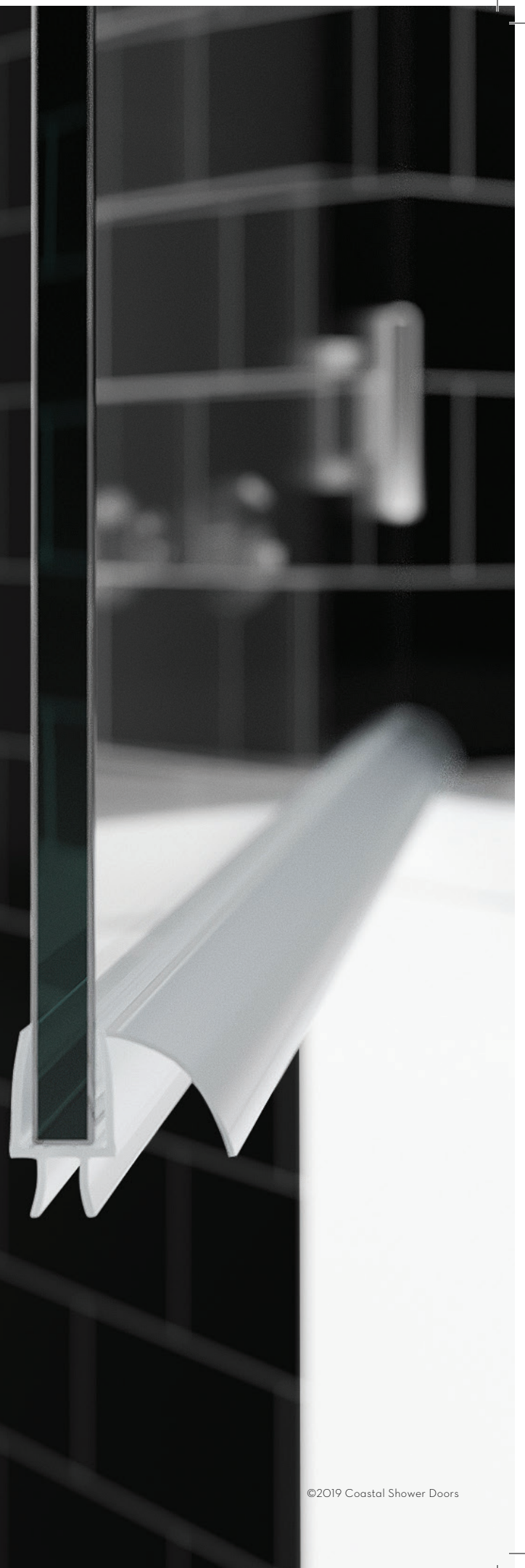




VINYL REPLACEMENT SHOWER SWEEP

Create the perfect seal that keeps water
in the shower and off the floor.

These clear, vinyl replacement sweeps keep frameless
shower doors looking brand-new, with drip rails that
drain water back into the shower instead of onto the
bathroom floor. The sweeps fit two glass sizes: 1/4"
(which also fits 3/16") and 3/8", with the ability to be
trimmed for an easy fit.





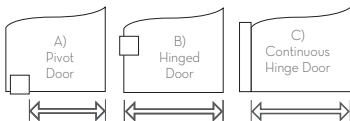
VINYL REPLACEMENT SWEEP FOR 1/4" THICK GLASS

- Drip rail slopes 45° so the water is drained back into the shower
- Easily fits into the bottom of frameless shower door
- Installs in a few minutes
- 39" length, customer trims to fit
- Sold in a case of 10

SPECIFICATIONS

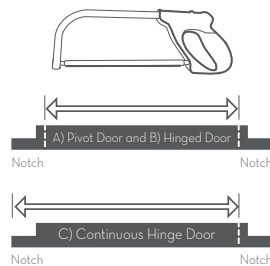
Door Type	Hinged shower door	Manufacturer Color	Clear
Width	40-in	Color Finish/Family	Clear
Height	0.25-in	Package Quantity	1
Material	Vinyl	Package Contents	40-in/ 1/4-in thick vinyl frameless door sweep

Install Instructions:



Step 1:

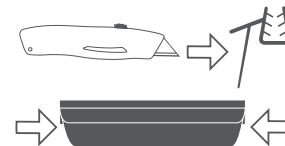
- Measure the bottom edge of your door.
- A) For Pivot Doors, measure from pivot to outer edge.
- B) For Hinged Doors, measure the entire width of the bottom edge.
- C) For Continuous Hinge Doors, notched side designed to fit around continuous hinge shower door if applicable.



Step 2:

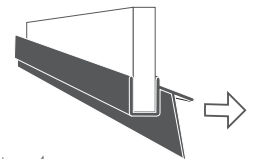
- Cut the vinyl to fit your measurement in step 1.
- A) For Pivot Doors, cut the notches off both ends.
- B) For Hinged Doors, cut the notches off both ends.
- C) For Continuous Hinge Doors, determine the notched end that will fit over the continuous hinge. Cut the opposing end to be flush with the end of the door.

To ensure a tight close, it mustn't be any shorter than your measurement. A hacksaw with a 32-TPI blade is recommended.



Step 3:

- Use a utility knife to deburr the edges on each end. Create a radius on each corner of the drip edge.



Step 4:

- Install the sweep by pressing it firmly into place along the bottom edge of the door. Make sure to face the drip edge inward to keep the water within the shower stall.



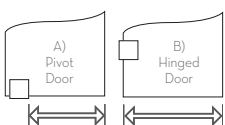
VINYL REPLACEMENT SWEEP FOR 3/8" THICK GLASS

- Drip rail slopes 45° so the water is drained back into the shower
- Easily fits into the bottom of frameless shower door
- Installs in a few minutes
- 39" length, customer trims to fit
- Sold in a case of 10

SPECIFICATIONS

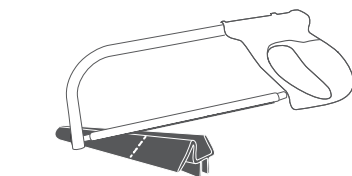
Door Type	Hinged shower door	Manufacturer Color	Clear
Width	40-in	Color Finish/Family	Clear
Height	0.375-in	Package Quantity	1
Material	Vinyl	Package Contents	40-in/ 3/8-in thick vinyl frameless door sweep

Install Instructions:



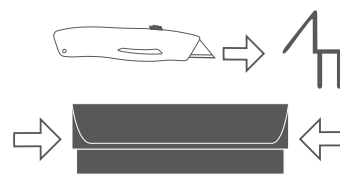
Step 1:

- Measure the bottom edge of your door.
- A) For Pivot Doors, measure from pivot to outer edge.
- B) For Hinged Doors, measure the entire width of the bottom edge.



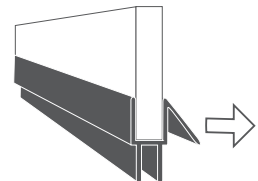
Step 2:

- Cut the vinyl to fit your measurement in step 1. To ensure a tight close, it mustn't be any shorter than your measurement. A hacksaw with a 32-TPI blade is recommended.



Step 3:

- Use a utility knife to deburr the edges on each end. Create a radius on each corner of the drip edge.



Step 4:

- Install the sweep by pressing it firmly into place along the bottom edge of the door. Make sure to face the drip edge inward to keep the water within the shower stall.