

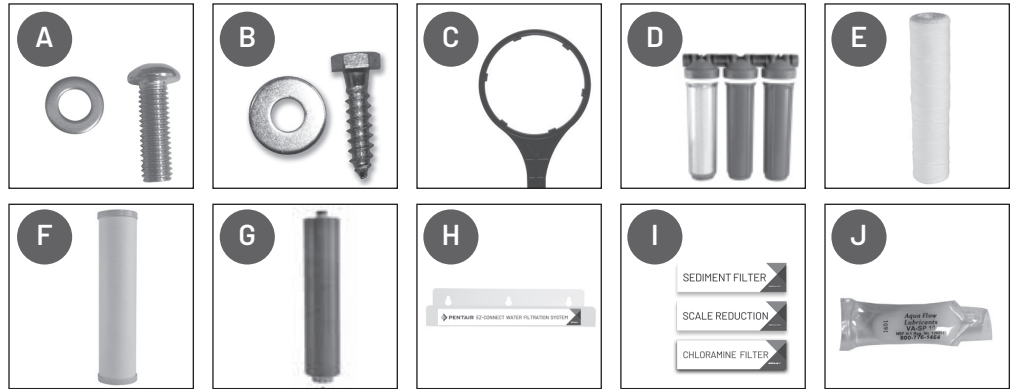
EZ-CONNECT 3-STAGE COMBO SYSTEM - 20"

PSE-500-P

Installation Instructions

PARTS OF THE SYSTEM

- A) Twelve (12) Machine Bolts & Washers
- B) Three (3) Lag Bolts & Washers
- C) One (1) Spanner Wrench
- D) Three (3) 20" Housings w/Covers
- E) One (1) Sediment Cartridge
- F) One (1) Chloramine Cartridge
- G) One (1) NaturSoft® Cartridge
- H) One (1) Mounting Bracket
- I) Three (3) Decals
- J) One (1) Silicone Grease

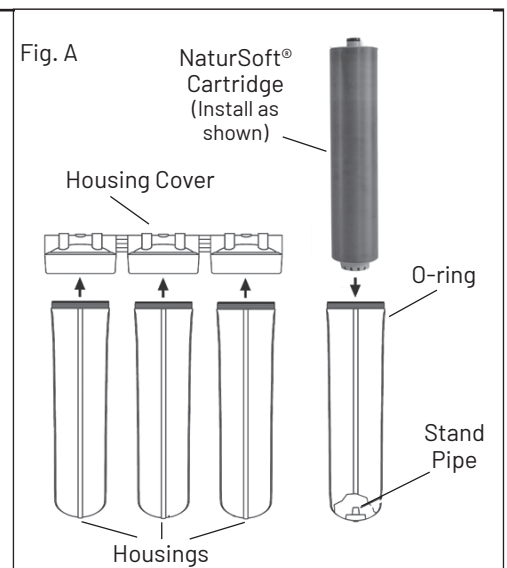


PRODUCT OPERATION AND SPECIFICATIONS

Specification Description	PSE-500-P
Rated Service Flow	5 gpm
Minimum Working Pressure	25 psi
Maximum Working Pressure	80 psi
Operating Temperature	36°F - 120°F
PH Range	6 - 11

ASSEMBLY

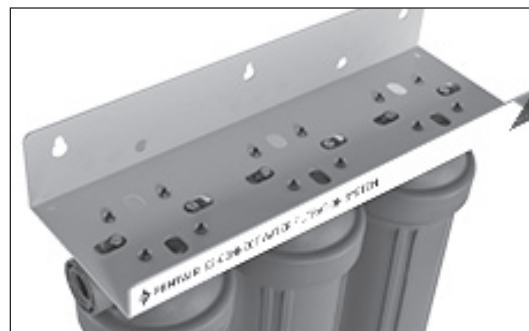
1. Unpackage and account for all items before starting installation.
2. Determine location and water flow direction for system.
3. Install covers onto bracket orientating the Inlet and Outlet correctly. Use four (4) bolts and washers in each cover to attach.



INSTALLATION

1. Install bracket to wall using appropriate fasteners (3 qty, 5/16" x 2" stainless lag bolts included).
2. Once the bracket is mounted, attach plumbing to the Inlet and Outlet with 1" male threaded adaptations (not included).
(Plumbing a shut off valve prior to and a bypass around the unit first is recommended).
3. Apply corresponding decals to each of the covers as shown.
4. Unwrap filter cartridges and insert into each of the housings, centering on the stand pipe.
5. Thread housings onto the corresponding covers counter clockwise (do not overtighten).
6. Slowly turn on water main to fill housings.
7. Open the nearest faucet and run water for 10 minutes to expel any carbon fines.
8. After 10 minutes, turn off faucet.
9. Your system is now ready for use.

Top of Pentair EZ-Connect PSE-500-P



Front of Pentair EZ-Connect PSE-500-P



Warning

Installing this system in a metal (conductive) plumbing system, i.e., copper or galvanized metal, will interrupt the continuity of the plumbing system and grounding source in some homes. If your home's electrical appliances are grounded through the plumbing system, you will need to install a bypass that consists of the same material as the existing plumbing or a grounded "jumper wire" to bridge the equipment and re-establish the contiguous conductive nature of the plumbing before using this Pentair system. Failure to do so can result in errant electricity from improperly grounded appliances or potential galvanic activity in the plumbing system, which could increase the risk of fire or injury while using your home appliances. Please consult a licensed electrician before attempting to install.

MAINTENANCE:

- The Sediment and Chloramine cartridges will need to be replaced every six (6) months.
- The NaturSoft® cartridge will need to be replaced every five (5) years.

CARTRIDGE REPLACEMENT

1. Turn off main water supply.
2. Open the nearest faucet (leave open).
3. Open drain on the bottom of Housing to drain water.
4. Apply wrench to housing, and turn wrench handle to the right to loosen the housing (turning the housing to the left).
5. Remove and discard old O-ring and cartridge.
6. Unwrap and install a new cartridge, centering on stand pipe.
7. Install a new O-ring lubricated with food grade silicone grease.
8. Re-install housing and tighten (do not over tighten).
9. Turn main water supply on slowly to allow the system to fill, the air will expel through the open faucet.
* When replacing the chloramine cartridge, you will need to run water at the nearest faucet for 10 minutes to expel any carbon fines.
10. Close faucet and check for leaks.



2361 Mason Ave | Suite 100 | Daytona Beach, FL 32117 | United States
P: 877.842.1635 | Technical Services: 877.842.1635 | pentair.com/homewater

© 2021 Pentair. All indicated Pentair trademarks and logos are property of Pentair. Third party registered and unregistered trademarks and logos are the property of their respective owners.

4006091 Rev B AU21