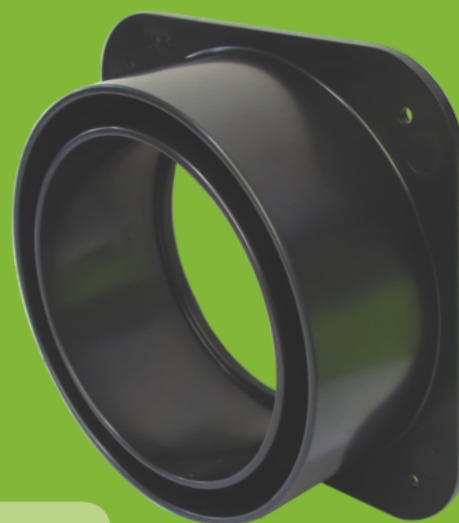


# 4" Triple Wall Pipe to Stormwater Pit Connector

## There's a New Boss of the Underground

US Trench Drain's PIT BOSS provides an easy, quick and simple method of securing 4" Triple wall pipe to polypropylene catch basins or stormwater pits.



The US Trench Drain's Pit Boss provides a secure and easy connection between polymer stormwater pits and 4" Triple Wall pipe.

Made from ABS, US Trench Drain's Pit Boss can be secured to the wall of the Storm water catch basin using US Trench Drain's **Poly Adhesive SKU 20095** and the stainless steel screws. Once installed, 4" Triple wall, solid or perforated pipe can be attached using **Poly Adhesive SKU 20095**

Product code: 80080

**Works with ANY  
polypropylene catch  
basin or stormwater pit**

### Installation Guidelines

Choose the US Trench Drain storm water catch basin that suits your project, identify the installation location that is required and dig a hole to suit. Mark out the location where pipe will be connected. Use a 4 5/16" hole saw to create the opening to suit the Pit Boss. Connect the Pit Boss using US Trench Drain's **Poly Adhesive SKU 20095**, and fix to the wall of the catch basin using the 4 x Stainless steel screws (included) Connect the 4" Triple wall, solid, or perforated pipe to the pit Boss, securing, using US Trench Drain's **Poly Adhesive, SKU 20095**.

Place the grate into the storm water pit basin and backfill around the catch basin.

Jan 2016