



OMS THD SKU# 1005 982 290

Model # 21RT1092124

ASSEMBLY INSTRUCTIONS

108in 280L WW LED Scary Clown Arch

USE AND CARE GUIDE

PLANNING ASSEMBLY

Carefully remove all the parts from the box and place them on the ground or flat surface. Many parts are connected by the lighting string that runs throughout the item. Take special care not to pull, cut or damage the lighting string. Read the entire manual prior to assembly and identify all the parts included in the package against the parts list. It is recommended to assemble parts of the product while laying flat on the ground versus standing the item up to assemble the parts. If any parts are missing or damaged do not attempt assembly but contact our customer service center or return the item to place of purchase with receipt.

***Assembly of this product may require more than one person.**

Pre-Operation

CAUTION: Grasp the plug to insert or remove from the power source.

Do not unplug by pulling on the cord.

CAUTION: The lighting string on this product is rated at 67.2 Watts (0.56 Amps). Do not overload. Do not connect to another lighting string, decorative outfit or other electrical products. Before you use or re-use this product inspect it carefully. Discard or return to place of purchase with purchase receipt if the product has cuts, damage, frayed wire insulation on cords, cracks in the socket enclosures, loose connections, exposed copper wire or other obvious damage..

Care and Cleaning

- Carefully remove the product from wherever it is placed. This helps to avoid any undue strain or stress on the product connections and wires. If the product is placed somewhere other than the ground it should be well secured and flat.
- Carefully disassemble the product taking caution not to cut any electrical wires.
- Wipe the product with a damp cloth and allow to dry before storing.
- Store the product neatly in a cool, dry location protected from sunlight.

Trouble Shooting

- Ensure that the floor or surface that the item sits on is flat and level
- Be sure to plug the item correctly to a wall outlet or a UL Listed Power Cord
- Ensure all parts are assembled properly per the Instruction Manual
- If the product does not light check for loose or broken bulbs and connections
- Do not plug into other electrical items
- If the product has multiple Light String Cords be sure to plug in all cords
- Check for Broken or Burned Out Fuse In Plug

Guarantee

What is Covered

The product is intended for residential seasonal use for 90 days maximum per year. This product is covered by a 90 days limited guarantee due to defects in material and workmanship. Return the product with purchase receipts to the location of purchase for refund within 90 days of purchase.

What is Not Covered

This warranty does not cover commercial use, normal wear and tear, products not used in accordance with directions provided on or with the product, burn out of bulbs or LEDs, batteries, products that have been subjected to unauthorized repair and/or modification and damage caused by shipping and improper handling, alterations, in-store display units, misuse or accidents. Questions, problems, missing parts? Before returning to the store, call Home Accents Holiday Customer Service 8 a.m.-6 p.m., EST, Monday-Friday



Thank you!

We appreciate the trust and confidence you have placed in Home Accents through the purchase of this 108in 280L WW LED Scary Clown Arch. We strive to continually create quality products designed to enhance your home. Visit us online to see our full line of products available for your home improvement needs. Thank you for choosing Home Accents!

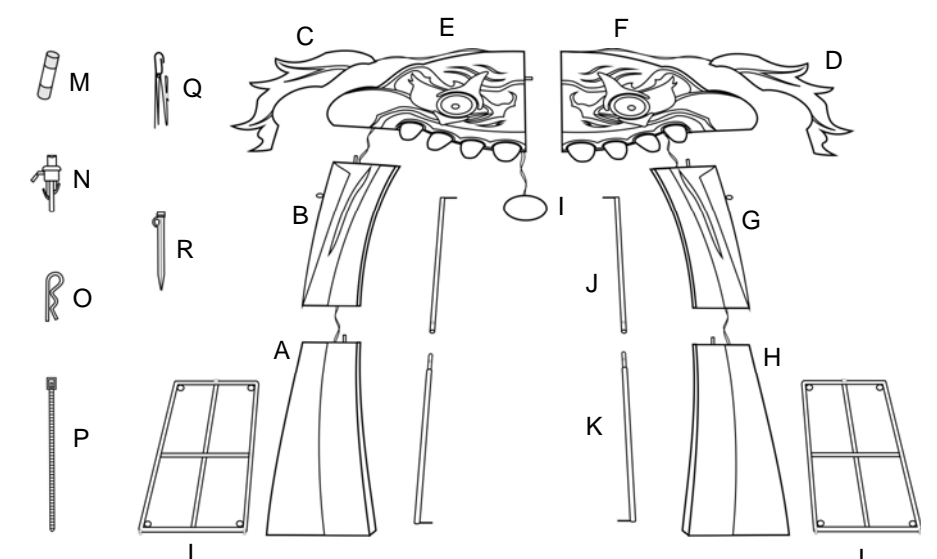
1-877-527-0313

HOMEACCENTSHOLIDAY.COM

Parts List		
A	Bottom Right Section of Arch	1
B	Middle Right Section of Arch	1
C	Right Section of Hair	1
D	Left Section of Hair	1
E	Right Section of Head	1
F	Left Section of Head	1
G	Middle Left Section of Arch	1
H	Bottom Left Section of Arch	1
I	Red Nose	1
J	Stabilizing Bar	2
K	Stabilizing Bar	2
L	Base Stand	2

Hardware List		
M	Spare Fuse	4
N	Spare Bulb	10
O	Cotter Pin	2
P	Plastic Tie	15
Q	Anchoring String	4
R	Ground Stake	12

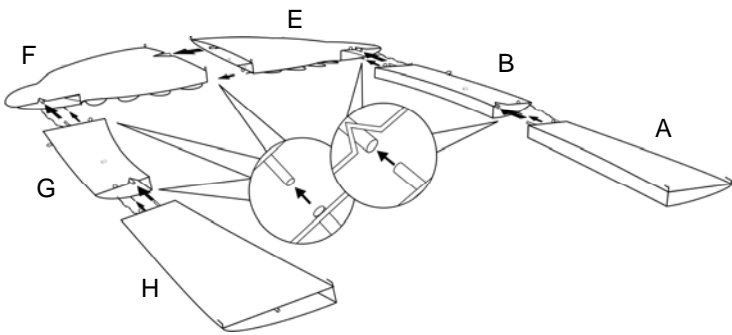
Diagram of Parts



ASSEMBLY

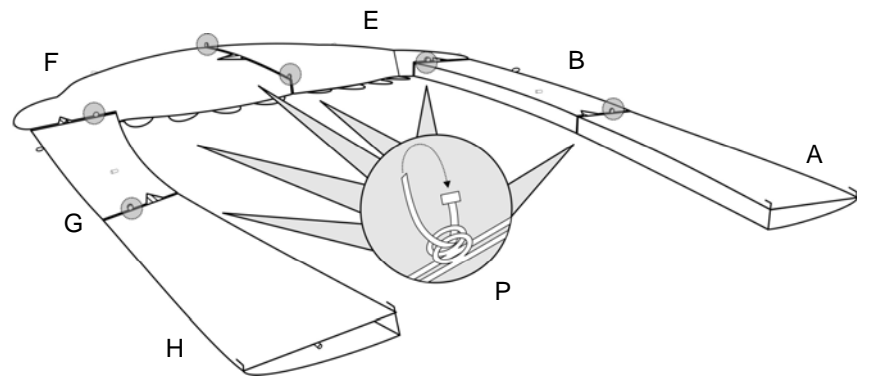
1 Assembling the Scary Clown Arch

NOTES: Place the six (6) sections of the Scary Clown Arch (A,B,E,F,G,H) face down on the ground or floor. Attach the connecting rods into the connecting holes for each Scary Clown Arch Section (A,B,E,F,G,H) per the diagram below. A & B connect, B & E connect, E & F connect, F & G connect, G & H connect. Tuck the power cord that runs throughout the parts into the sections so it is not visible on the outside.



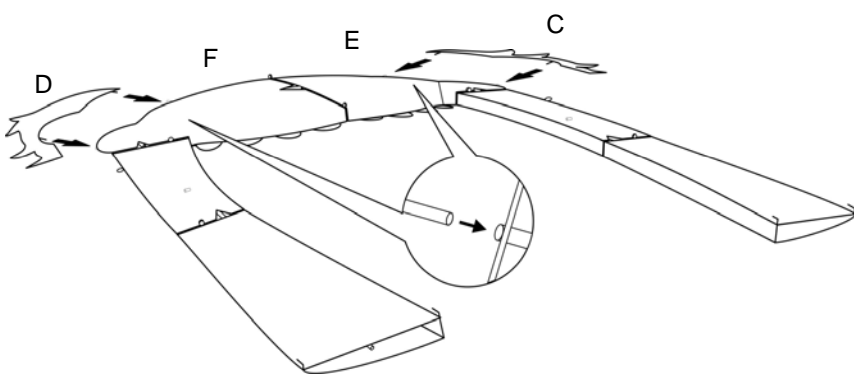
2 Securing the Assembled Scary Clown Arch

Align the connecting loops between the sections (per the diagram below) with each other and fasten the sections of the Scary Clown Arch (A,B,E,F,G,H) together at the connecting loops with the Plastic Ties (P).



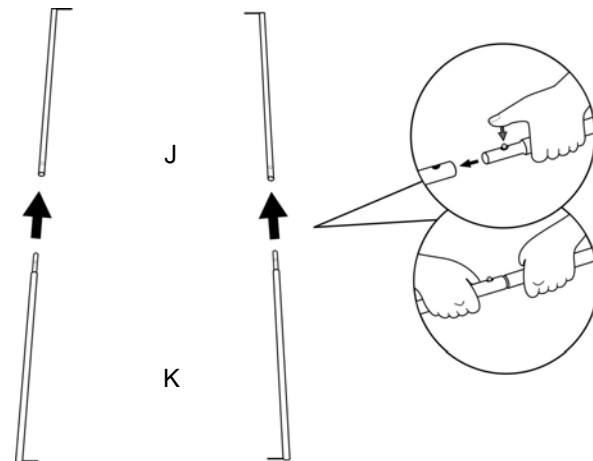
3 Assembling the Left and Right Section of Hairs

Insert the connecting rods on the Left and Right Section of Hairs (C,D) into the connecting holes on the Left and Right Section of Heads (E,F).



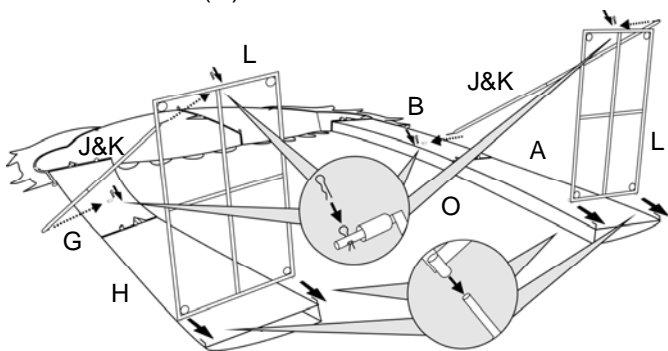
4 Assembling the Stabilizing Bars

Attach the sections of the Stabilizing Bars (J,K) together and lock with built in locking pin.



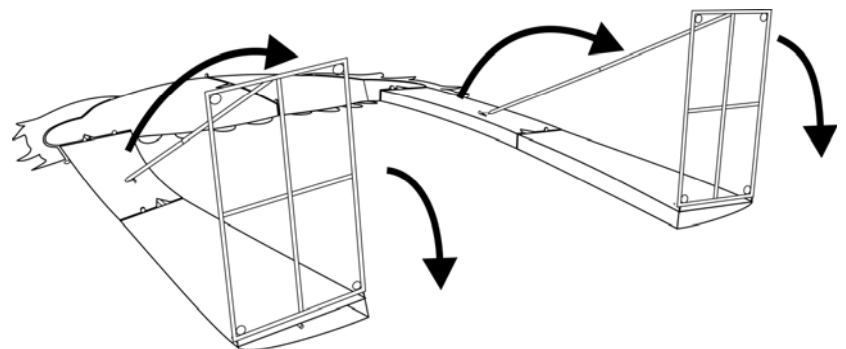
5 Attach the Stabilizing Bars to the Arch and Base Stands

Insert the connecting rods on the bottom of the Scary Clown Arch sections (A, H) into the matching holes of the Base Stands (L). Insert the connecting rods on the upper Stabilizing Bars (J) into the matching connecting holes on the back of the Arch Sections (B,G) then secure with the Cotter Pins (O). Insert the connecting rods on the lower Stabilizing Bars (K) into the left and right Base Stands (L) then secure with the Cotter Pins (O).



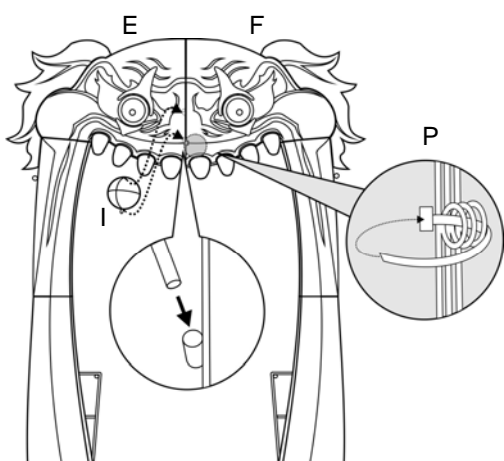
6 Stand up the Arch

Stand the assembled Scary Clown Arch up to an upright standing position.



7 Assembling the Red Nose

Insert the connecting rods on the Red Nose (I) into the matching holes on the front of the Right Section of Head (E) then fasten them (E,F,I) together at the connecting loops with the Plastic Tie (P).



8 Attach the Anchoring Strings and Ground Stakes

Insert Ground Stakes (R) over the 4 corners of the Left and Right Base Stands then press into the ground. The Arch comes with Anchoring Strings (Q). Hook the plastic clip end of each Anchoring Strings (Q) onto the securing loop located on the Middle Left and Right Sections of Section of Arch (B,G). Use the remaining Ground Stakes and run the looped end of the Anchoring Strings over the clip on the end of the Ground Stake. Pull the Anchoring Strings with Ground Stakes away and out from the Arch in four directions then press the Ground Stake (R) firmly into the ground.

