

INSTRUCTION MANUAL

This is a high quality product and must be installed and maintained as per these instructions or it may invalidate the Warranty.

To installer: Please leave this manual with the user/householder when finished.

WARNING:

When using electrical appliances, comply with basic safety precautions in order to reduce the risk of fire, electric shocks and personal injury.

GENERAL INSTRUCTIONS

No-one, and in particular no child, must be in the vicinity of the workplace. Check that the electrical specifications of this mirror light are compatible with your installation.

WARNING:

The power supply must be switched off before installation or maintenance. Remove The fuse or de-activate it, and make sure that it cannot be reactivated.

The mirror light must be installed by a qualified electrician in accordance with the wiring standards in force in the country where the installation takes place.

This electrical product complies with the safety standards in force. Repairs must only be carried out by qualified technicians using original spare parts. Any failure to follow these instructions can be particularly dangerous to users and will invalidate the Warranty.

Installation Instructions:

1. Fix the screw(s) on the wall where the mirror is to be placed.

Screw fastenings should be made in concrete or other solid structure, or in structures that have been tested and approved for fastenings.

Before drilling a hole, make sure that there is no risk of drilling through an existing non-visible cable or pipe; and make sure that the hole position for the expansion screw fits the mirror and the hanging direction.

2. Isolate the power supply by means of the electrical system main switch.

3. Connect the electricity supply to the mains cable, making sure that the conductors match (mains brown and neutral blue).

4. Carefully attach the mirror to the wall, making sure the mirror hanging properly and level.

5. Restore the power supply.

6. Switch on the mirror light. Your mirror light is now ready to work.

Short Touch - ON/OFF

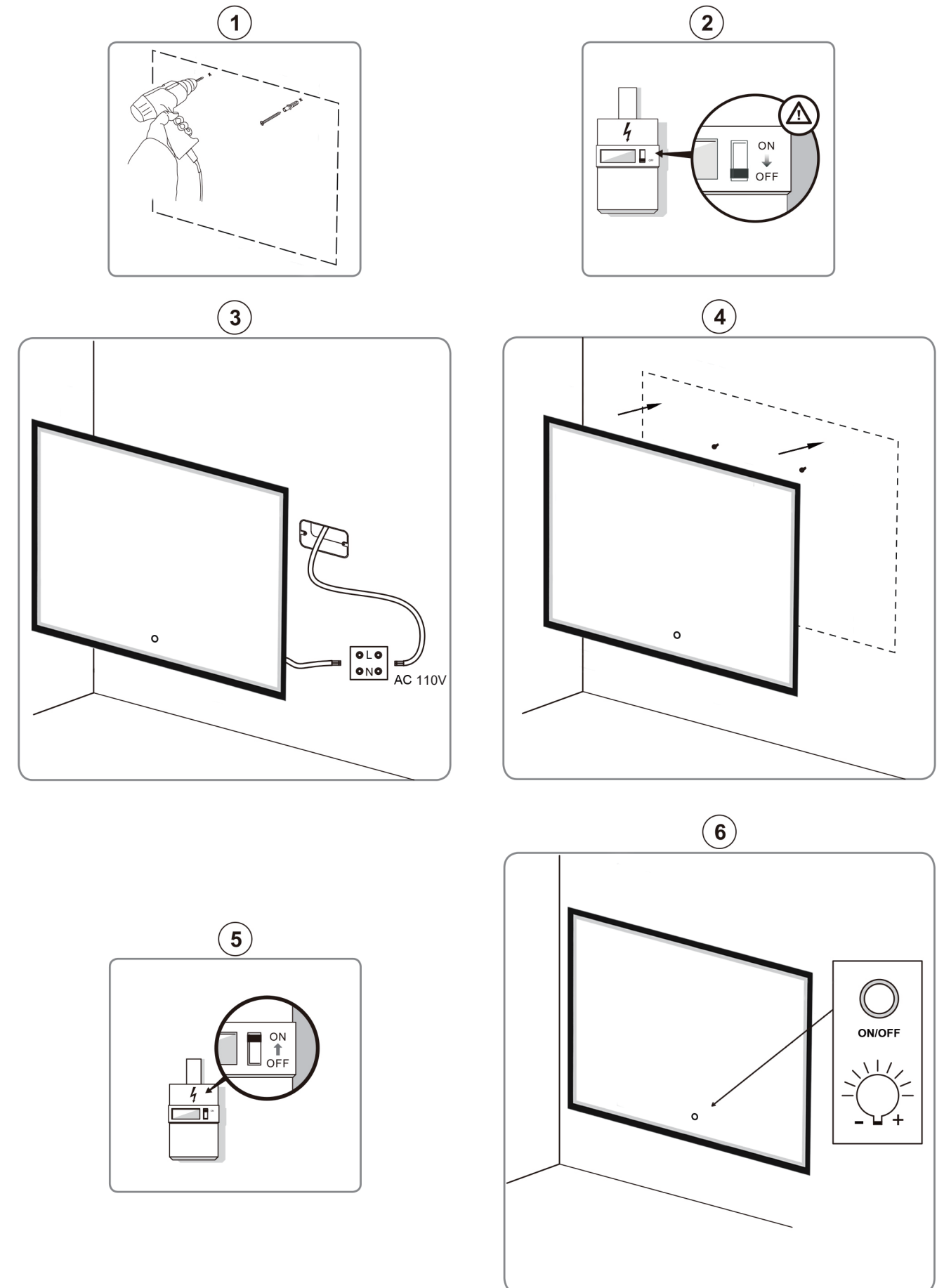
Long Touch - Dimming

The demister starts working when switching on the mirror light.

Cleaning and Maintenance:

Clean regularly and wipe off excess moisture by using a dry cloth only. Installation and maintenance must only be carried out by a Qualified Electrician.

Installation Manual



HOW TO USE?

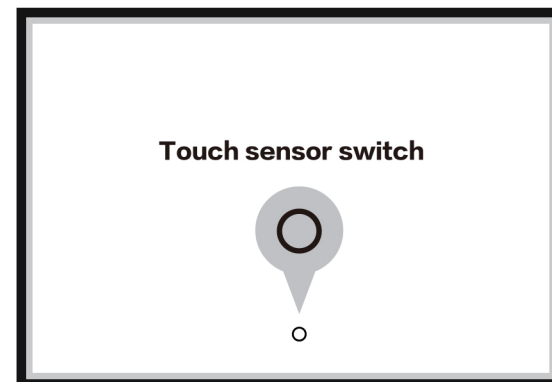
For LED lamps

1. Press on the touch switch for a short time to control the light on or off.

(Note: The defogging is turned on or off with mirror light)

2. After the light is turned on, press the touch switch for a long time to adjust the brightness of the light.

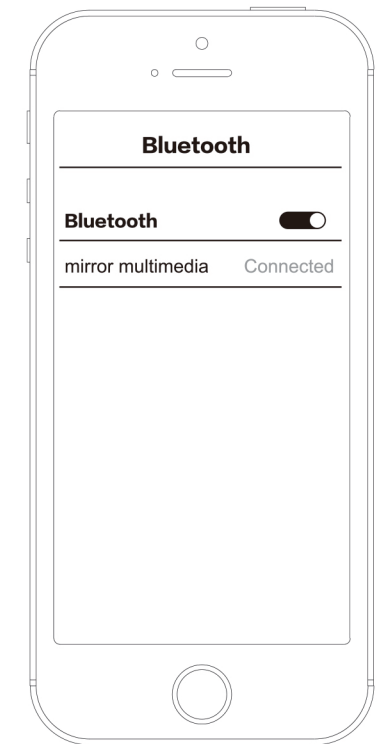
3. Light color temperature can be switchable to warm white, natural white and cool white. Turn on / off once, the color changes once.



For Bluetooth Music

1. Turn on the power.
2. Open your phone Bluetooth search for 'mirror multimedia', select and connection.
3. Then you can play any music within your phone/pad.

NOTE: Bluetooth is connectable to one device only. If you want to connect the second device, please forget the first device.



PARAMETERS

HLIN1	LED LAMP	HORN *
Size: 700*1200*25mm	Lumen: 1500 lm	Power: 6W
Input: AC100~120V	CCT: 3000K/4000K/6500K	Sensitivity: 84~90dB
Output: 12VDC 2.5A MAX	Power: 55W	Impedance: 4Ω
Power: 60W	Ra>90	

Every parts is dismountable, we will send you new one if it is unworkable.

*The bluetooth version for choosing

HOW TO REPLACE?