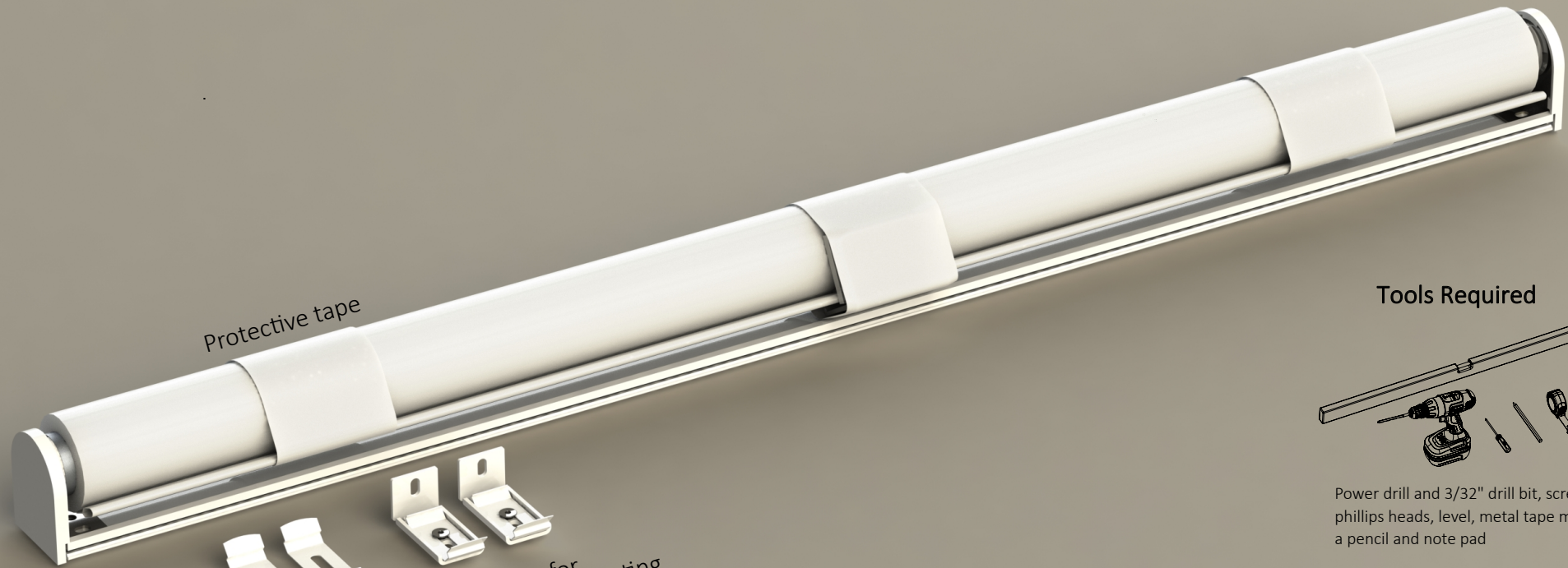
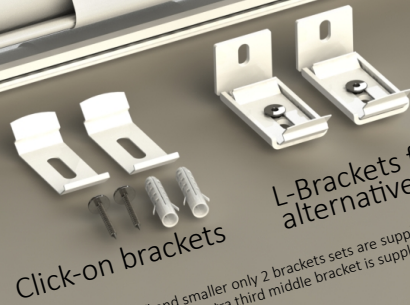


Spring Roller Shade

Installation Guide



Protective tape

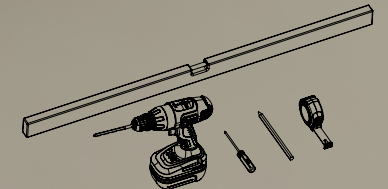


Click-on brackets

L-Brackets for alternative mounting

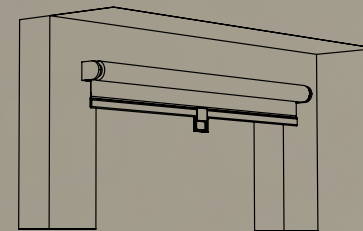
*For shades 47" and smaller only 2 brackets sets are supplied
(For wider shades an extra third middle bracket is supplied)

Tools Required

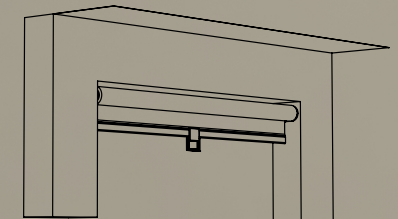


Power drill and 3/32" drill bit, screwdriver or bits with phillips heads, level, metal tape measure, a pencil and note pad

Installation Positions



Outside mount



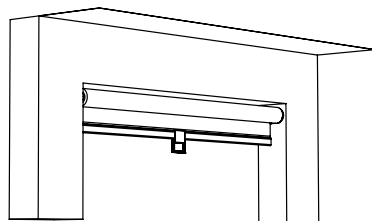
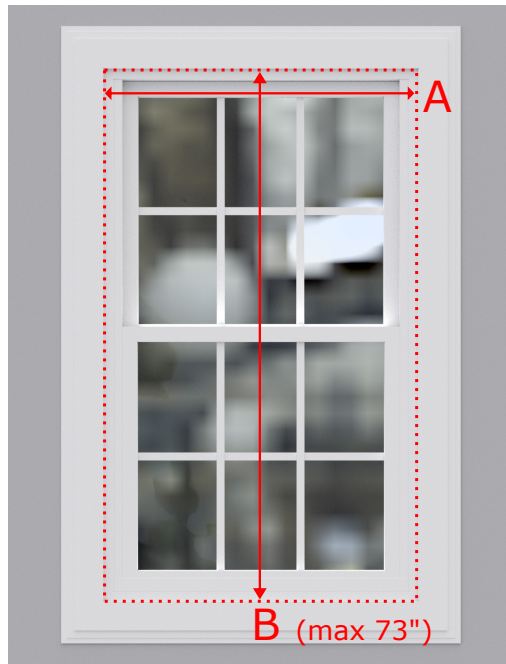
Inside mount

Spring Roller Shade

Installation Guide - Measurement instructions

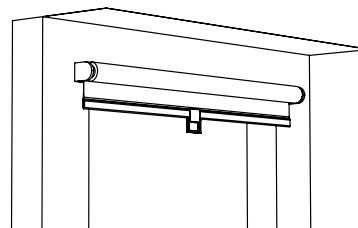
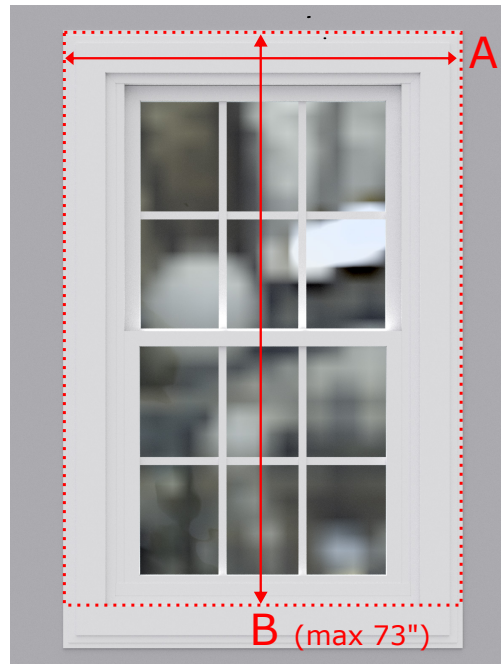
Inside mount

Measure the opening width at top (A):



Outside mount

Measure the width from edge to edge of window molding (A):



Inside mount

Measure the window opening width at the top rounded down to the closest 0.5". The depth of the window frame must be at least 1.5" for inside mount.

Outside mount

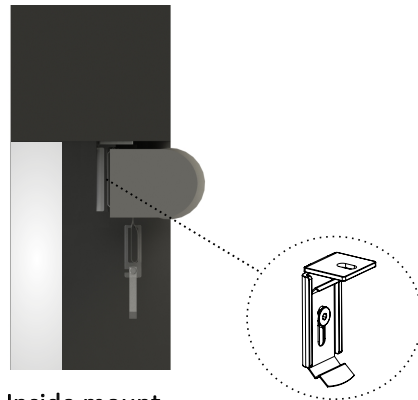
Measure window molding width to the closest 0.5". If preferred the shade can also be installed on the wall above the molding.

The **maximum height** of the iFit shade is 73".

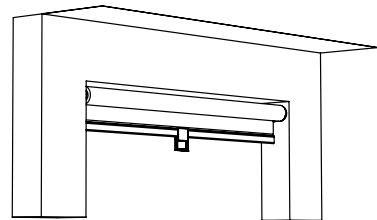
Spring Roller Shade

Installation Guide - Installation positions

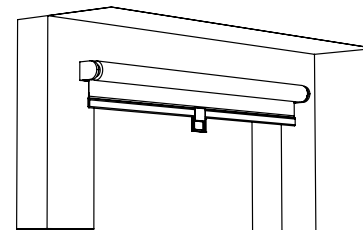
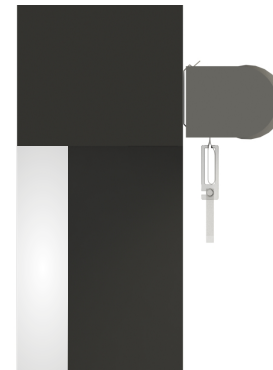
Inside mount



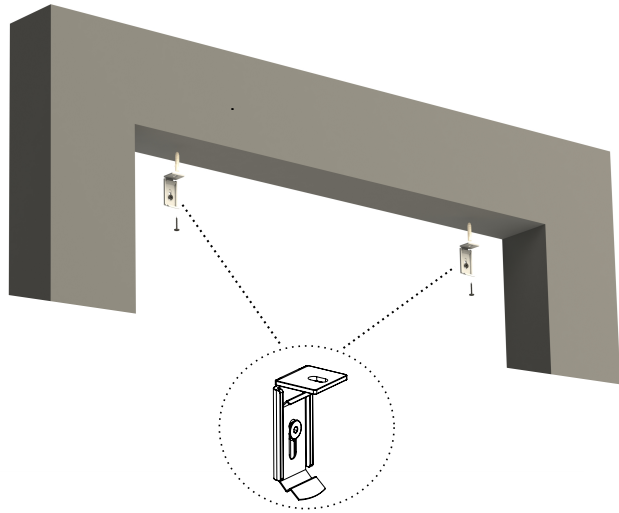
Inside mount
using L-bracket



Outside mount



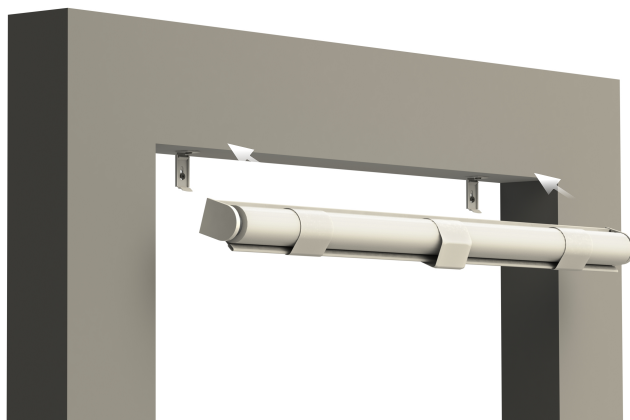
Spring Roller Shade Installation Guide - Inside mount



With a pencil, mark the position of the brackets approx. 4" from the inside edges. Use the level to assure that brackets are level across.

For shades 47" and shorter 2 mounting brackets are supplied.
(For 47,5" and wider shades an extra third middle bracket is supplied)

Drill mounting holes using a 3/32" drill bit.
Attach brackets with the provided screws using a screw driver or power drill.
(If installed in drywall use the supplied plugs).



Install the shade by simply clicking it on the bracket with an up and in motion.
Now the shade can be adjusted sideways by hand to be centered.

Spring Roller Shade

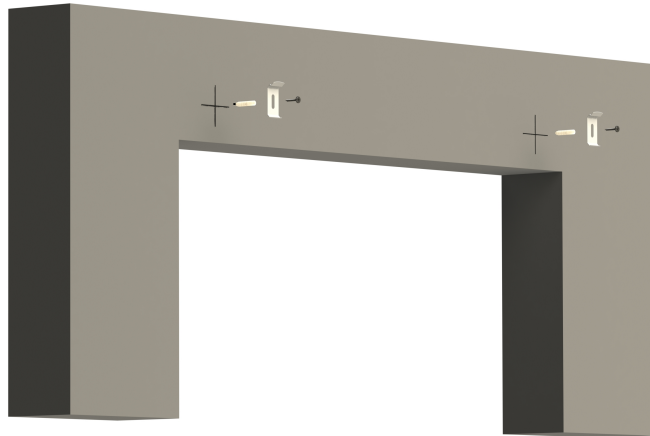
Installation Guide - Inside mount



Carefully remove the protective tape from the shade.

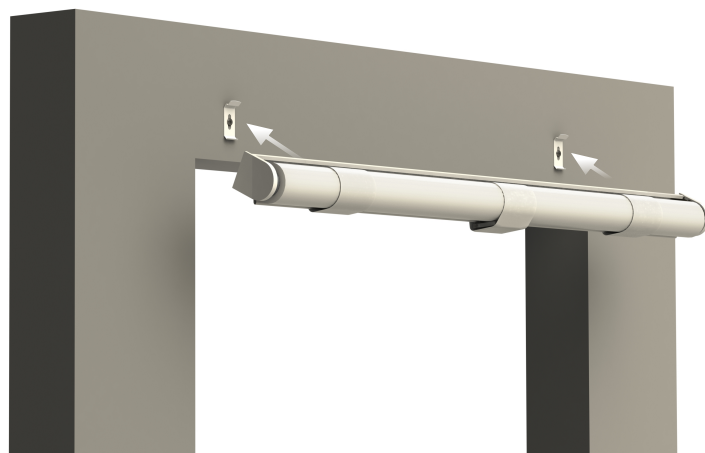
Spring Roller Shade

Installation Guide - Outside mount



With a pencil, check and mark the position of the brackets, including fixing positions. Mark position of the brackets approx. 4" from the edges of the roller shade. Use a spirit level to ensure the brackets are placed in a straight line. For shades smaller than 47" only 2 brackets are supplied (For wider blinds an extra middle bracket is supplied)

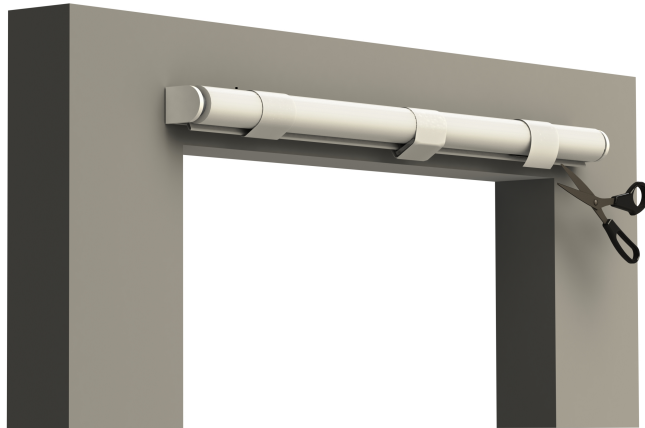
Pre-drill holes for screws. Using a Phillips head screwdriver, fix the brackets using the screws provided. For installation on plaster walls use the wall plugs provided. In order to install on aluminium frames pre-drill holes of 3/32" diameter for bracket screws.



Install the shade by simply clicking it on the bracket with an up and in motion. Now the shade can be adjusted sideways by hand to be centered.

Spring Roller Shade

Installation Guide - Outside mount

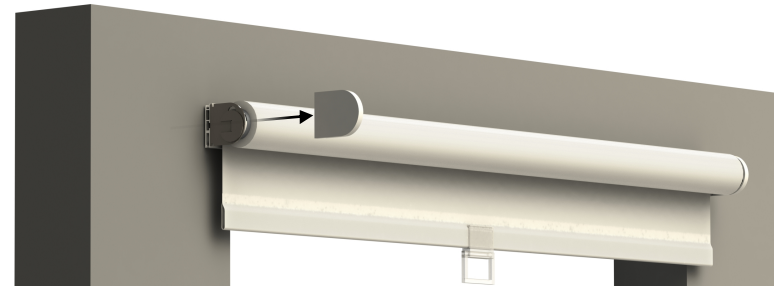


Carefully remove the protective tape from the shade.

Spring Roller Shade

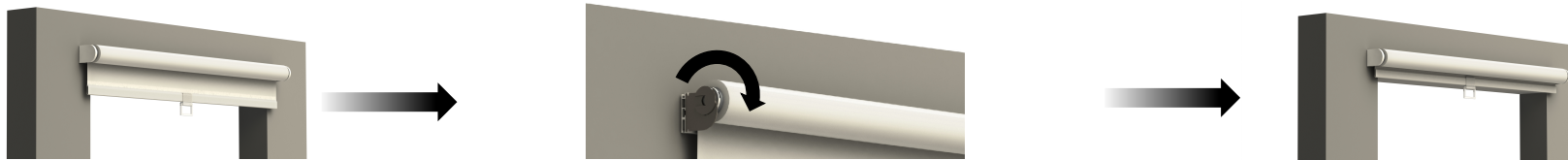
Installation Guide - Adjusting the Shade (optional)

The stop position can be adjusted to your individual preference. To adjust the shade, first remove the plastic cover from the left bracket, then follow the steps shown below.



Option 1: The roller shade is stopping too low

Hold the left part of the shade with one hand and lift the adjustable ring in the bracket. Turn the ring together with the shade in the clockwise direction and insert it back in the bracket slot. Half turns (180°) and full turns (360°) are possible. The bigger adjustment in the clockwise direction, the higher the shade will stop. More than 1 adjustment might be needed before reaching desired position.



Option 2: The roller shade is stopping too high

Hold the left part of the shade with one hand and lift the adjustable ring in the bracket. Turn the ring together with the shade in the counterclockwise direction and insert it back in the bracket slot. Half turns (180°) and full turns (360°) are possible. The bigger adjustment in the counterclockwise direction, the lower the shade will stop. More than 1 adjustment might be needed before reaching desired position.

