

CAL FLOR

SOLUTIONS FOR YOUR FLOORS

SilverStep

Premium Folded Underlayment Combined with Moisture Barrier

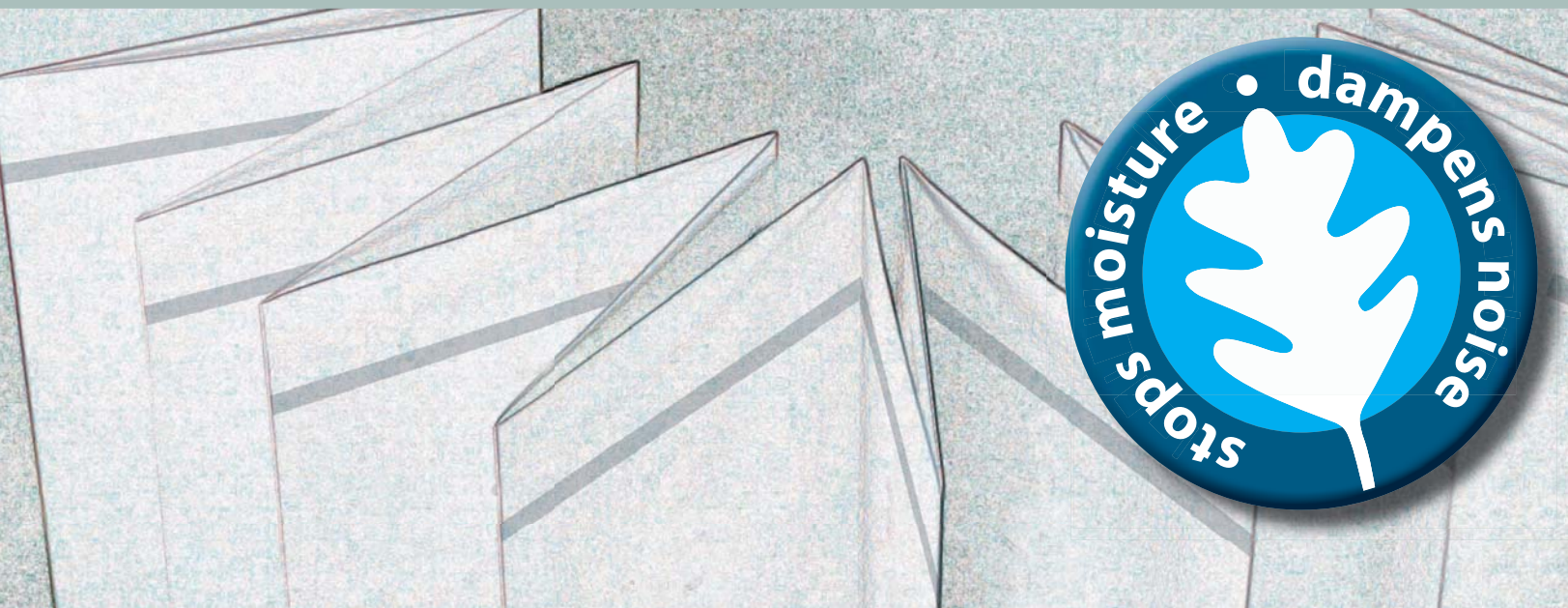
Crosslinked foam stops moisture before it hits your floor

Moisture barrier film adds double-protection

Folded shape lays flat during installation

Faster & easier to handle than rolls

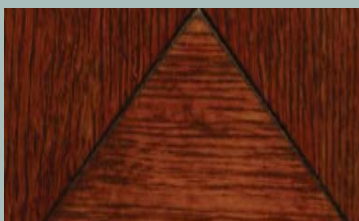
Pre-taped overlap flap speeds installation



Reduces sound on & below the floor: IIC 72, STC 66

COVERAGE: 100 SQ FT

Size: 1/8" x 43" x 28 FT



FOR USE WITH
Floating wood floors
Laminate flooring
Bamboo & Cork floors



MADE IN CHINA

Item #FU81422



SilverStep Installation Instructions

A Double Moisture Blocking System

SilverStep Folding Underlayment is a high quality, cross-linked polyethylene foam with an additional film moisture barrier. Cross-linked foams by themselves meet the requirements for all floated flooring. But Cal-Flor adds an additional barrier film, because in your home you cannot be too safe or too protective against flooring's #1 enemy: moisture.

Superior Acoustical Properties

SilverStep meets and exceeds the sound requirements set by the flooring industry for use in multi-story dwellings. With an Impact Insulation Class (IIC) rating of 72 and a Sound Transmission Class (STC) rating of 66, SilverStep provides superior protection against unwanted noise, both in the room and below the floor.

Gridded & Folded Underlayment

SilverStep's fast and flat folding style is much easier to install and the handy printed grid lines make your cuts straighter, more accurate and faster.

1. Calculate and purchase enough SilverStep underlayment to allow for about 5% loss due to cutting.
2. Following the flooring manufacturer's instructions, prepare the subfloor and be sure to repair any damaged sections. Sweep, vacuum, and remove all debris on the subfloor.
3. Start in the same corner of the room that you will be starting the flooring installation. Unfold SilverStep underlayment with the printed side up and the overlap flap side against the wall. Run the 3" flap up the wall to be trimmed after the flooring is installed.
4. Unfold and lay out the second row beside the first with the flap overlapping the first row. Pull the protective liner off the tape and firmly press the flap onto the previous row's tape with no folds or wrinkles.
5. Cut as needed to fill the room. Wherever there is a cut seam (like where the ends meet), tape and seal the seam with good packing or duct tape.

GENERAL NOTES:

- Any areas where the tape, the flap or the surface have been cut or damaged, use packing or duct tape to reseal the underlayment.
- Be sure to connect rows and ends together evenly so that the foam never overlaps and there are no wide gaps.

HINT & TIPS:

- To preserve the moisture barrier properties of the underlayment, we suggest you lay out SilverStep only one row ahead of your flooring installation.
- If you or other tradespeople have to walk repeatedly over the underlayment, cut some of the SilverStep into walkways and lay them on top of the underlayment to protect it.
- If the underlayment is moving around on you, place some unopened cartons of flooring in strategic places to hold the foam in place. ***Never staple SilverStep to the subfloor.***
- To save you time and work, run SilverStep through doorways and trim it later (prior to installing trims and transitions).