

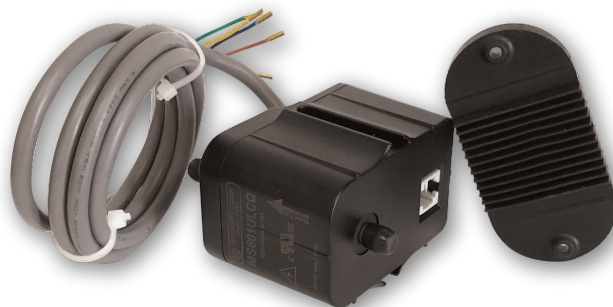


New Quieter Design

Mini Condensate Pump

Model: MS602ULCQ

Includes: Pump with mounting pad, Condensate reservoir, Breather tube, 1/2" Drain inlet adapter, 5' of 1/4" ID tubing



Application: Mini Split system up to 36,000 BTU



Power Supply	230V 50/60Hz 0.08 Amps
Water Temp Range	41°F - 140°F
Size Reservoir	4.3" L x 1.5" W x 1.6" H
Size Pump & Pad	3.4" L x 2.8" W x 2.5" H
Inlet/ Outlet size	1/4" ID tubing
Switch	Single reed switch with on/off and safety (N.O.)

Pump & Switch Power Cord	5'
Duty Cycle	50%
Flow Rate @ 0'	2.7 gph
@20'	1.7 gph
	Avg Performance
Recommended Lift	33'
Max Suction Lift	4.0'