

VEVOR[®]

VEVOR[®]

E-mail: CustomerService@vevor.com

**HIGH PRESSURE WASHER
INSTRUCTION MANUAL**

Machine often starts and stops by itself.	Pump/spray gun is leaking.	Contact your nearest service.
Machine starts, but no water comes out.	Pump/hoses or accessory frozen. No Water supply. Water filter blocked Nozzle blocked	Wait for pump/hoses or accessory to thaw. Connect water supply and turn on. Clean the filter. Clean the nozzle.



E-mail: CustomerService@vevor.com

Made in China

VEVOR[®]

HIGH PRESSURE WASHER INSTRUCTION MANUAL



NEED HELP? CONTACT US!

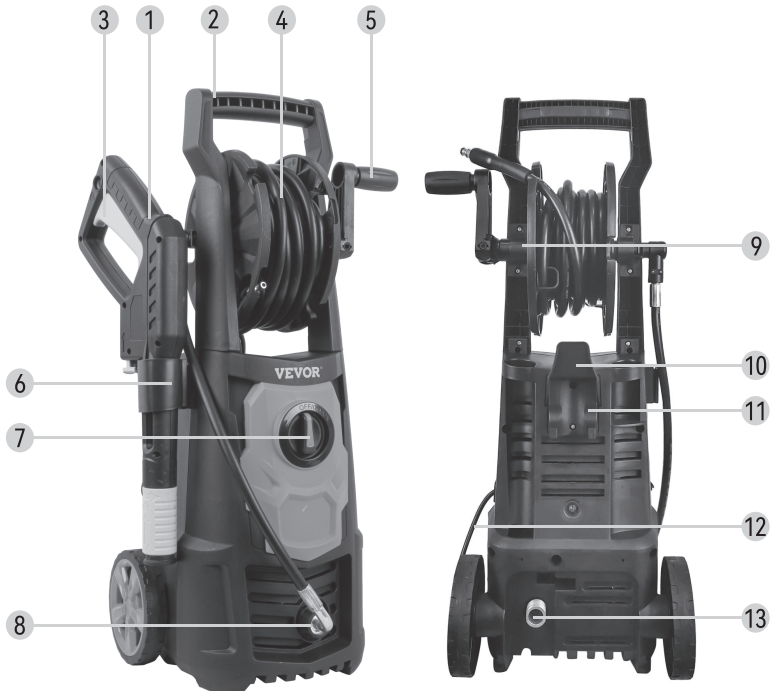
Have product questions? Need technical support? Please feel free to contact us:

CustomerService@vevor.com

This appliance is not intended for use by persons (including children) with reduced physical, sensory or capabilities, or lack of experience and knowledge, unless they have been given supervision or instruction concerning use of the appliance by a person responsible for their safety.

COMPONENT LIST

1. Spray gun	2. Handle	3. Trigger gun
4. High pressure hose with reel	5. Reel handle bracket shaft	6. Gun hook
7. ON/OFF switch	8. Outlet	9. Handle bracket shaft
10. Cable hook	11. Soap bottle hook	12. Cable
13. Inlet	14. Spray lance	15. Nozzles
16. Needle	17. Soap bottle	18. Inlet filter
19. Turbo nozzle		







TROUBLESHOOTING

Disconnect the machine from the power source before making any repairs. To avoid unnecessary complications, check the following before contacting the service organization:

Machine refuses to start.	Machine not plugged in Defective socket. Defective extension cable.	Plug in machine. Try another socket. Try without the extension cable.
Fluctuating pressure.	Pump sucking air. Valves dirty, worn out or stuck. Pump seals worn out.	Check that hoses and connections are airtight. Clean and replace or refer to local distributor.
Machine stops	Incorrect mains voltage. Thermal cut-out activated. Nozzle partially blocked.	Check that the mains voltage corresponds to specification on the model tag. Leave the washer for 5 minutes to cool down. Clean the nozzle.
Machine pulsating	Air in inlet hose. Inadequate supply of mains water. Nozzle partially blocked. Water filter blocked. Hose kinked.	Pump and allow the machine to run with an open trigger until regular working pressure resumes. Check that the water supply corresponds to specifications required. Avoid using long, thin hoses (min. 1/2"). Clean the nozzle. Clean the filter. Straighten out hose.

SYMBOLS

	Warning: Do not direct the jet at people, animals, and electrical equipment. Consider removing the period since the rest of the parts below do not have periods.
	Read the manual
	Machine not suitable for connection to the potable water mains
	Double insulation

OPERATING INSTRUCTION



NOTE: Before using the tool, read the instruction book carefully.




WARNING:

- Never use the pressure washer to draw in water contaminated with solvents (e.g. paint thinners, gasoline, oil, etc.).
- Dirt in the feed water will damage the unit. To avoid this risk, we recommend checking the water filter (Locate inside the water inlet; to clean it out, see maintenance section).
- Always prevent debris from being drawn into the unit by using a clean water source. If a water filter is available, use it also.


Water supply (cold water only)

1. Do not draw non-water liquids through the unit. For use with cold water supply only.
2. Water hose must be at least a 1/2" in diameter.
3. Flow rate can be determined by running the water for one minute into an empty container.
4. The water supply temperature must not exceed 40°C (104°F)

1		2	
4		5	
6		9	
10		14	
15		16	
17		18	
19			

TECHNICAL

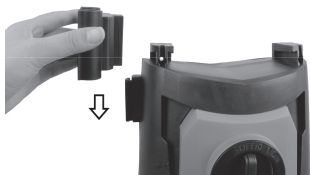
Voltage: 120V/60Hz
 Wattage: 1500W
 Rated pressure: 1300PSI
 Max. pressure: 2000PSI
 Rated flow: 1.2GPM

Max. flow: 1.76GPM
 Degree of protection: IPX5
 Rated temperature: 0-40°C
 Insulation class: 
 N.W.: 7.2kg

ASSEMBLY

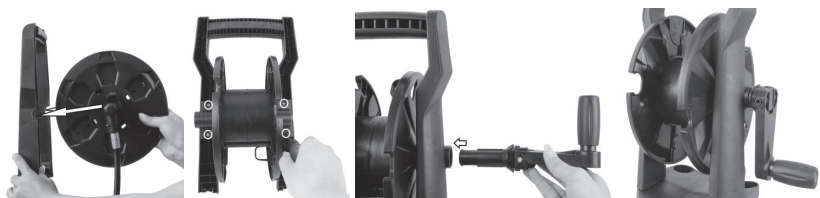
1. Assembling gun hook

Slide the gun hook onto the side of the machine.



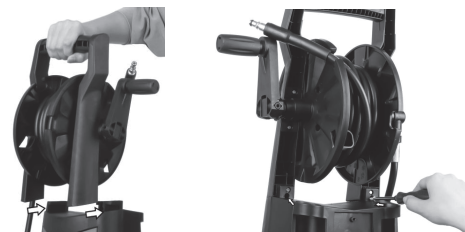
2. Assembling hose reel

Attach the handle bracket shaft to the handle and tighten the screws. (4pcs size:4x16mm).
Insert the reel handle bracket shaft into the right end of the winding barrel and fix it to the deepest point.



3. Assembling the handle

Attach the handle to the main body and tighten the screws.



4. Assembling cable hook&soap bottle hook

Press the cable hook to the machine, and tighten the two screws.



ADDITIONAL POWER TOOL SAFETY WARNING



WARNING: Do not use the appliance without reading the instruction sheet.

- Safety boots, safety gloves, safety helmets with visors, hearing protection, etc shall be worn while operating the machine.
- When opening the trigger gun, there is a risk of the kickback force and the sudden torque on the spray assembly. Please hold the nozzle tightly.
- **WARNING:** This machine has been designed for use with the cleaning agent supplied or recommended by the manufacturer. The use of other cleaning agents or chemicals may adversely affect the safety of the machine.
- **WARNING:** High pressure jets can be dangerous if subject to misuse. The jet must not be directed at persons, live electrical equipment or the machine itself.
- **WARNING:** Do not use the machine within range of people unless they wear protective clothing.
- **WARNING:** Do not direct the jet against yourself or others in order to clean clothes or foot-wear.
- Disconnect from the electrical power supply before carrying out user maintenance.
- High pressure cleaner should not be handled by children or untrained persons.
- **WARNING:** Risk of explosion - Do not spray flammable liquids.
- **WARNING:** To ensure machine safety, use only original spare parts from the manufacturer or approved by the manufacturer.
- **WARNING:** High pressure hoses, fittings and couplings are important for the safety of the appliance. Use only hoses, fittings and couplings recommended by the manufacturer.
- **WARNING:** Water that has flown through back flow prevent is considered to be non-potable.
- **WARNING:** The machine shall be disconnected from its power source by removing the plug from the socket-outlet during leaning or maintenance and when replacing parts or converting the machine to another function.
- **WARNING:** Do not use the machine if a supply cord or important parts of the machine are damaged, e.g. safety devices, high-pressure hoses, or trigger gun.
- **WARNING:** If an extension cord is used, the plug and socket must be of watertight construction.
- **WARNING:** Inadequate extension cords can be dangerous.
- It is recommended that the electric supply to this machine include either a residual current device that will interrupt the supply if the leakage current to earth exceeds 30 mA for 30 ms or a device that will ensure the earth circuit.

4. Switching off the appliance

Turn off the water supply at the tap.

Press the trigger to reduce the pressure in the appliance.

Pull out the water inlet hose, then let the machine run a few seconds to drain the water stored in the pump.

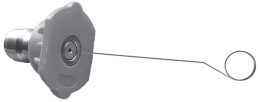
Switch off the appliance and disconnect the electric plug from the power socket

Detach the pressure hose. To drain the residual water, lift up the jet gun and squeeze the trigger.

5. Clean the inlet filter and nozzle

To ensure good performance, check and clean the adapter filter. Remove the filter and rinse with warm water to prevent any foreign matter from clogging the pump.

Remove the spray lance from the spray gun; remove any dirt from the nozzle hole and rinse.



WARNING:

1. After use, you need to turn off the water, turn off the gun, remove the barrel, and then fire the gun to remove the internal pressure of the product to prevent the product overflow valve from being under pressure for a long time;
2. Especially in winter, the product needs to be drained and placed indoors to prevent the water from freezing inside the product.

GENERAL POWER TOOL SAFETY WARNING



WARNING: Read all safety warnings and all instructions. Failure to follow the warnings and instructions may result in electric shock, fire, and/or serious injury.

Save all warnings and instructions for future reference.

- This appliance is not intended for use by people (including children) with reduced physical, sensory, mental capabilities, or lack of experience and knowledge, unless they have been given supervision or instruction concerning the use of the appliance by a person responsible for their safety.
- Children should be supervised to ensure that they do not play with the appliance.
- If the supply cord is damaged, it must be replaced by the manufacturer, its service agent, or similarly qualified individuals to prevent a hazard.

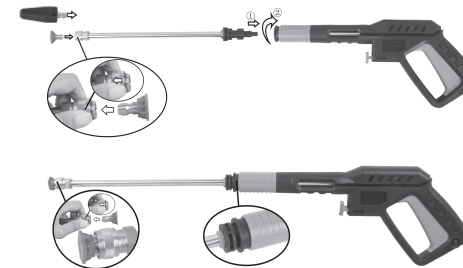
5. Inlet filter connection

Remove the protection cap (a) of the inlet first. Attach the inlet filter to the machine's inlet add space. (If it is already installed, you can ignore this step)



6. Gun connection

Insert the spray lance into the spray gun, and twist 1/4 turn. Insert the nozzle/ turbo nozzle into the spray lance.



7. Assembling high pressure hose

- 1) Make sure that the ON/OFF switch is in the OFF position.
- 2) Tighten the high pressure hose into the spray gun. But do not over tighten.
- 3) Remove the protection cap (b) of the outlet first, then connect the pressure hose to the machine's outlet, make sure it is connected firmly.



8. Soap bottle connection

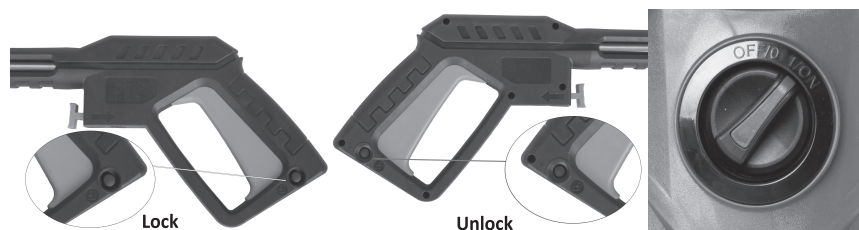
Insert the soap bottle into the spray gun, and twist 1/4 turn.



OPERATION

1. ON/OFF safety switch

- 1) Connect the plug into a power outlet.
- 2) Trigger switch is in a locked-off position to prevent accidental starting. Depress safety lock (d) to “unlock” position, to turn the trigger switch on.
- 3) Start the pressure washer by turning the ON/OFF switch to ON. Press the trigger. Reminder: motor does not run continuously, only when trigger is squeezed.
- 4) Before operating the high pressure washer, press the trigger switch to bleed any trapped air out of the pump and hose.



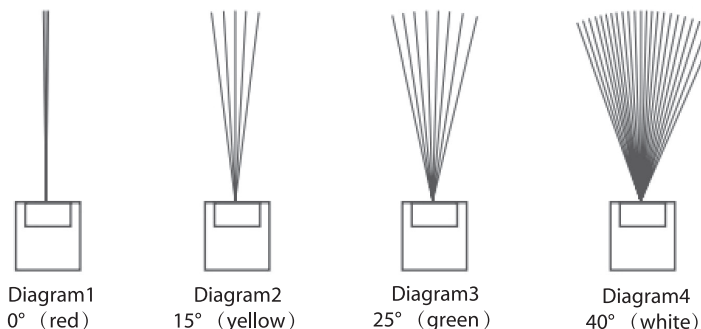
2. Surface preparation

Before starting any cleaning task, it is important to make sure that the area is free of objects which could create a hazard. Remove objects from the work area which could be tripped over, such as toys or outdoor furniture. Ensure that all doors and windows are closed tight.

3. Gun operation

1) Rotate to adjust the nozzle

The adjustable nozzle will allow you to use any variety of spray patterns from a full fan spray (Diagram 1) to a direct stream spray (Diagram 4). When using the pressure washer to clean wood decks, siding, vehicles etc., always start using the fan spray and begin spraying from a minimum 36” away to avoid damaging the surface of the material you are cleaning. Always begin by spraying in a testing area free and clear of people and objects.



CAUTION: Do not adjust the nozzle while the trigger is squeezed.



CAUTION: Jet spray adjustment is very aggressive. Do not adjust while spraying. We recommend that for most cleaning applications a 20-degree spray angle should be used to avoid damage to the surface being sprayed.

2) Using the soap bottle

It is recommended to use the detergent dispensing function to penetrate and remove dirt more effectively.

Connect the soap bottle into the spray lance until it is locked in position.



NOTE: Detergent needs to be diluted to achieve the most effective cleaning. It is recommended to dilute the detergent in a suitable container to the required concentration before use.