



STREAMLINE™

HARD FLOOR CLEANER



QUICK START GUIDE

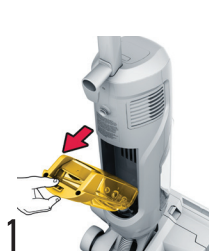
EASY ASSEMBLY



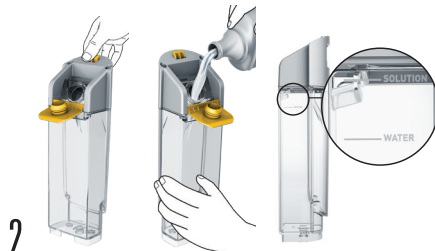
1

Insert handle into main unit. You will hear a click when inserted properly.

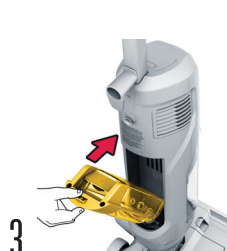
FILLING THE TANK



1 Remove solution tank from your product by pressing RELEASE latch.



2 First, open the flap and fill with water to the WATER line.
Next, fill Hoover Solution to SOLUTION fill line.

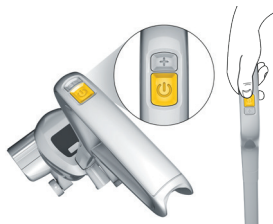


3 Close the flap and reinsert tank until it clicks into place.



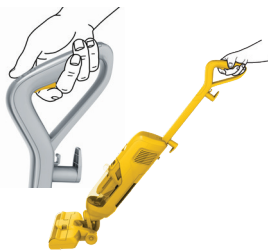
HOW TO USE

1



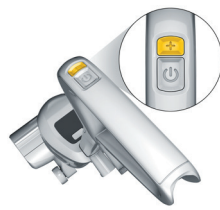
Locate and push the power button on the handle to start your machine.

2



Move the device slowly back and forth across the hard floor. Water is dispensed using the click of the trigger.

3



For stubborn messes switch to BOOST mode using the + button on the handle.

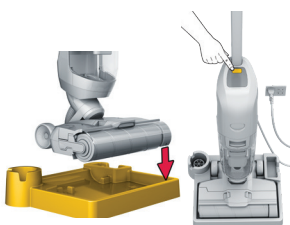
HOW TO USE SELF-CLEAN

1



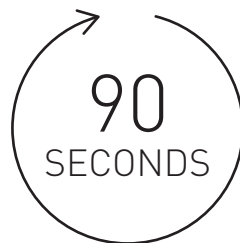
Make sure the Clean Water tank is at least half full.

2



Place your Streamline on the tray and press the Self-Clean button.

3



The unit will start a 90 second self-clean cycle. Do not remove from tray until cycle is complete.



BUY SOLUTIONS TODAY
FOR BEST PERFORMANCE, CHOOSE HOOVER®

961003600-RO