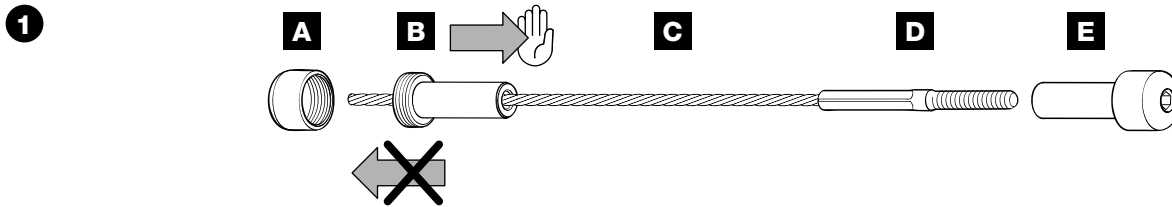




■ On-site assembly

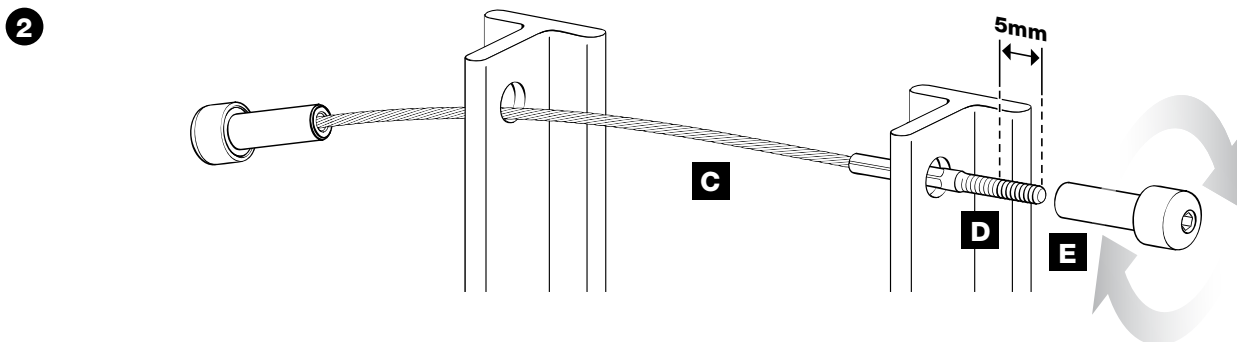


Part B comes already attached to the cable  
Suggested hole diameter for the END POST = 7/16"  
Suggested hole diameter for INTERMEDIATE POST = 5/16"

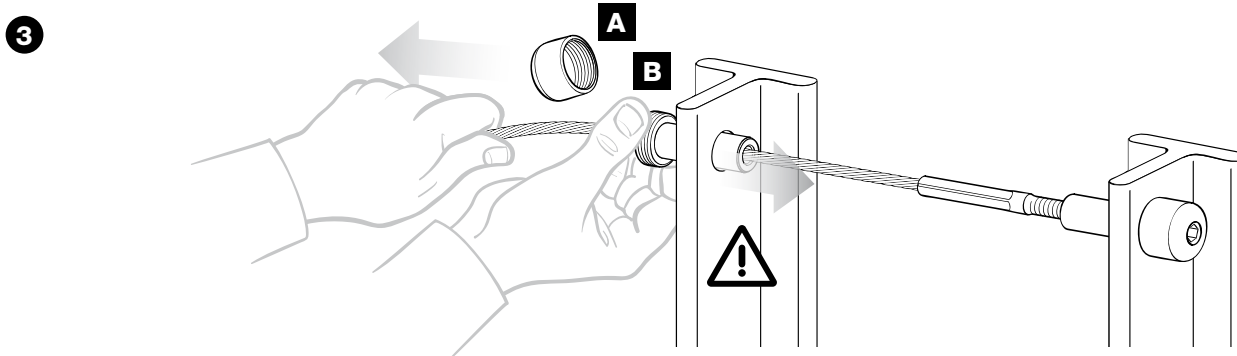
■ No. 30780-0400-...  
Radiused head rope  
for quick on-site assembly

Head cap with internal thread **A**, clamping/sliding sleeve **B**,  $\varnothing 4$  mm stranded wire **C**, swaged external thread end **D**, radius head with internal thread **E**.

**Caution: Part B can slide only in one direction and is self-locking!**



■ Slip stranded wire **C** with external thread end **D** into the railing post and screw radius head **E** onto the external thread 5 mm deep.

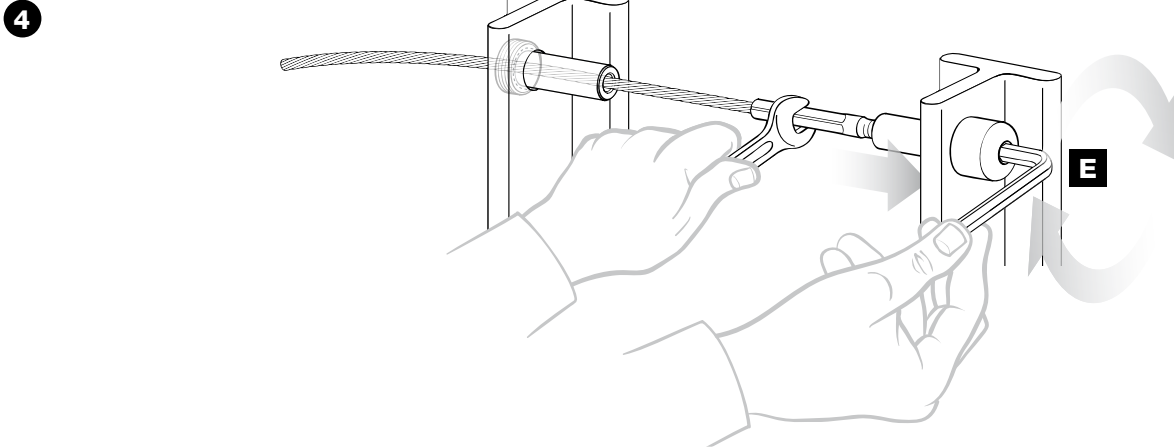


■ Unscrew head cap **A**, slide clamping/sliding sleeve **B** all the way to the post bore.

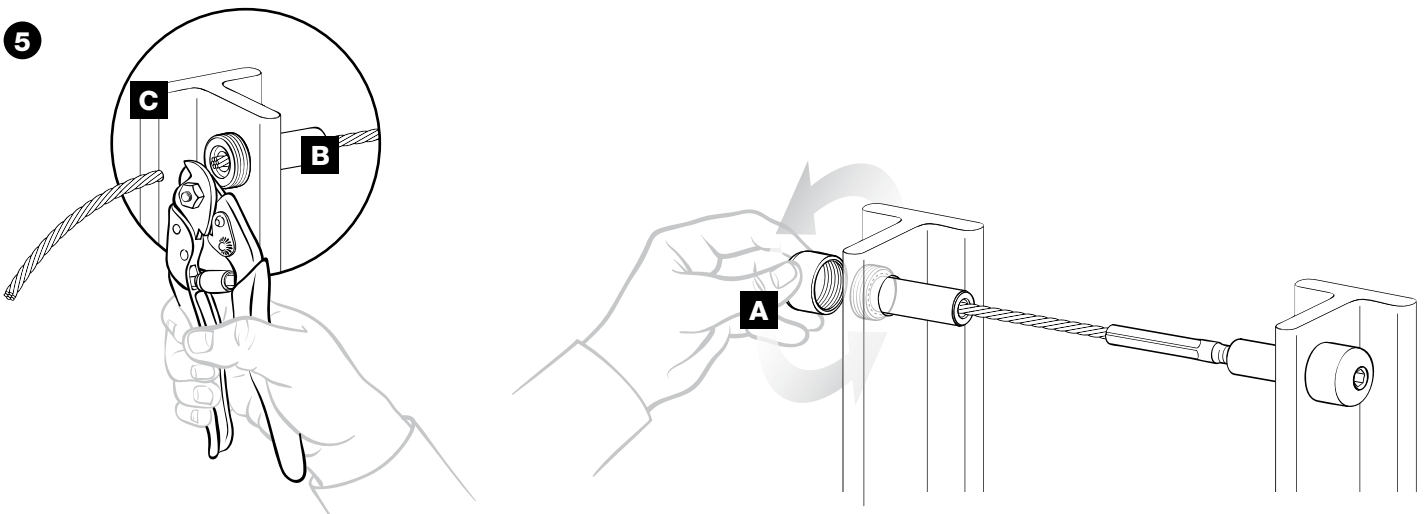
**Caution: Part B can slide only in one direction and is self-locking!**



■ On-site assembly



■ With a hex key, turn radius head with internal thread **E** until the desired tension of the stranded wire is attained



■ Use a cut-off saw or heavy wire snips to cut the protruding length of  $\varnothing$  4 mm stranded wire **C** close to clamping/sliding sleeve **B** and then screw head cap **A** tight.



■ The user is responsible for choosing the proper rope diameter and for correct assembly. **Functionality** is guaranteed only by Jakob<sup>®</sup> stranded wire **No. 10810-0400**.

**Working load limit:** see table below.

Stranded wire No. 10810-400	Working load limit
$\varnothing$ mm	kN
4	2,3

kN  $\times$  102 = kp