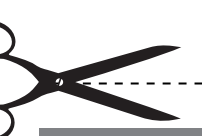
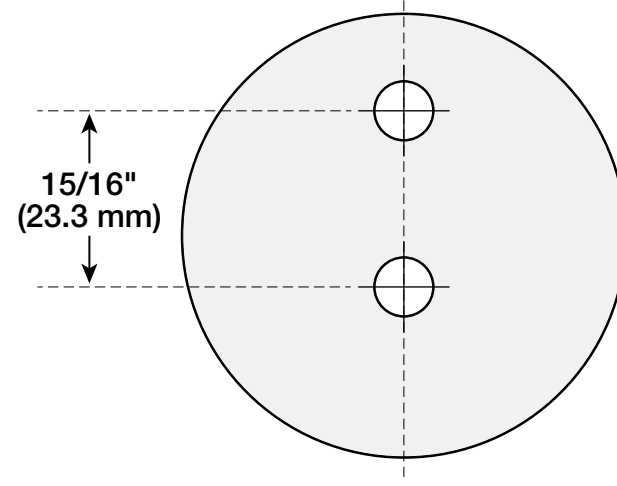




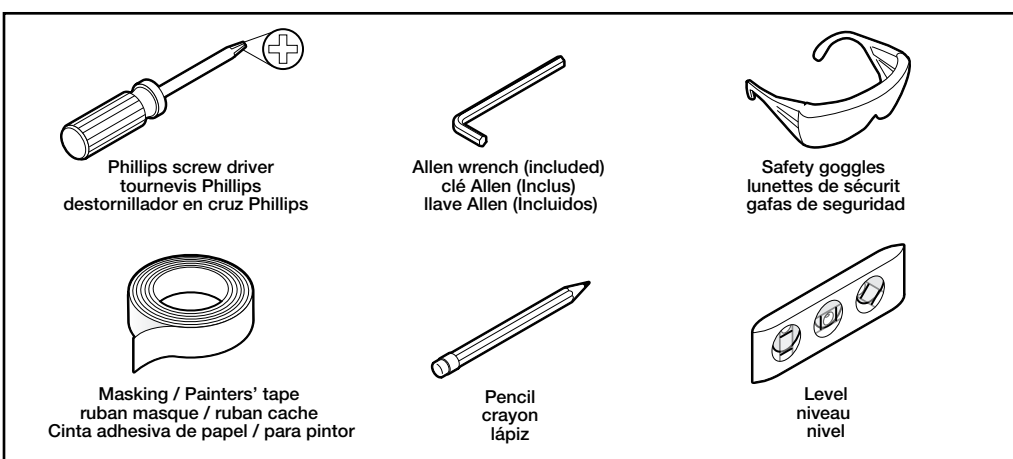
see what Delta can do™

Expandable Hook / Crochet extensible / Gancho extensible

TEMPLATE / GABARIT / PLANTILLA



REQUIRED TOOLS / OUTILS REQUIS / HERRAMIENTAS NECESARIAS



These installation instructions are for typical 1/2" drywall.

For wood stud installation, use #6 x 1-1/4" wood screws.

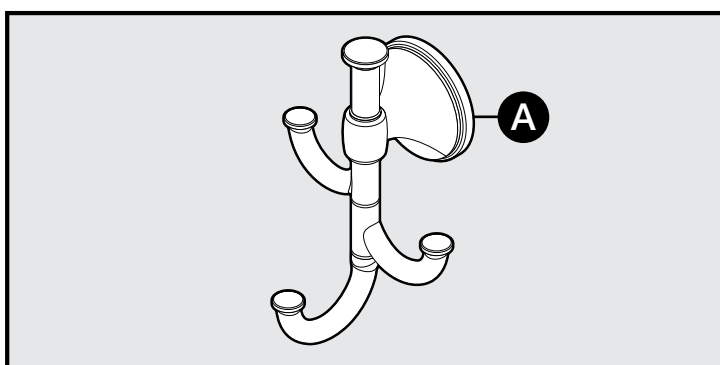
Ces instructions d'installation sont destinées aux cloisons sèches de 1/2 po.

Pour une installation sur montant en bois, utilisez des vis à bois n°6 x 1-1/4 po.

Estas instrucciones de instalación son para un panel de pared típico de 1/2".

Para la instalación en montante de madera, utilice tornillos para madera #6 de 1-1/4".

PACKAGE CONTENTS / CONTENU DE L'EMBALLAGE / CONTENIDO DEL PAQUETE

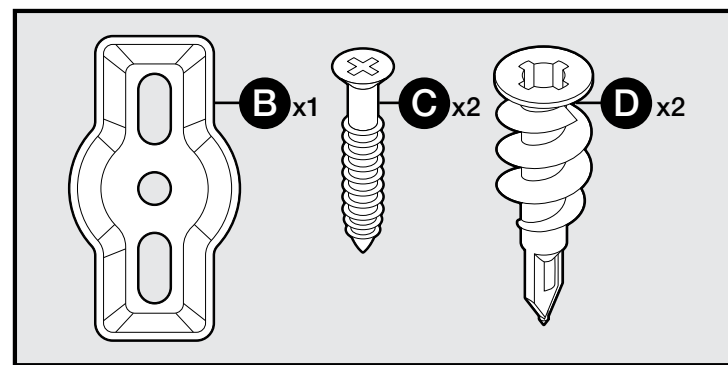


CAUTION: Read and follow these instructions carefully. Failure to follow these instructions could result in injury or property damage and may void the warranty.

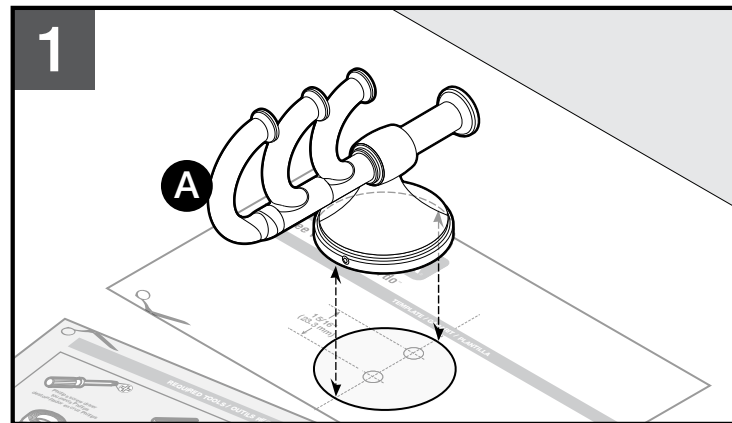
MISE EN GARDE: lire et suivre attentivement ces instructions. Le non-respect de ces instructions peut entraîner des blessures ou des dégâts matériels et annuler la garantie.

PRECAUCIÓN: Lea estas instrucciones cuidadosamente y respételas. De lo contrario se pueden ocasionar lesiones o daños en la propiedad y puede anular la garantía.

MOUNTING HARDWARE / MATÉRIEL DE MONTAGE / ELEMENTOS DE MONTAJE



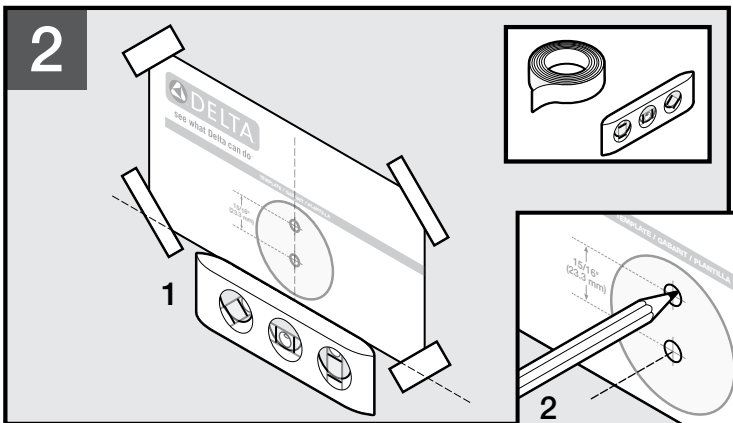
Locate mounting hardware before discarding any packaging. Localiser le matériel de montage avant de jeter les emballages. Ubique los elementos de montaje antes de desechar los envoltorios.



Carefully cut template along dotted line. Place fully assembled expandable Hook (A) and included template on a flat surface. Make sure post locations of Hook align with post locations on template.

Couper délicatement le gabarit le long de la ligne en pointillés. Placer le crochet (A) entièrement assemblé et le gabarit sur une surface plane. S'assurer que les emplacements des poteaux du crochet s'alignent avec les emplacements des poteaux du gabarit.

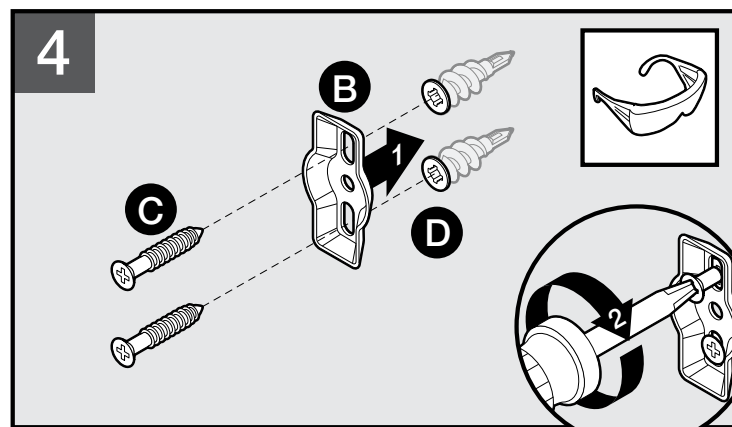
Corte cuidadosamente la plantilla por la línea punteada. Coloque el Gancho totalmente ensamblado (A) y la plantilla sobre una superficie plana. Asegúrese de que las ubicaciones del vástago en el Gancho se alineen con las ubicaciones del vástago en la plantilla.



Place template on wall and check level horizontally (using bottom edge of template as guide). Secure with tape. Using a pencil, mark holes through template onto wall.

Placer le gabarit contre le mur et vérifier le niveau à l'horizontale (en utilisant le bord inférieur du gabarit pour se guider). Fixer avec le ruban. À l'aide d'un crayon, marquer les trous du gabarit sur le mur.

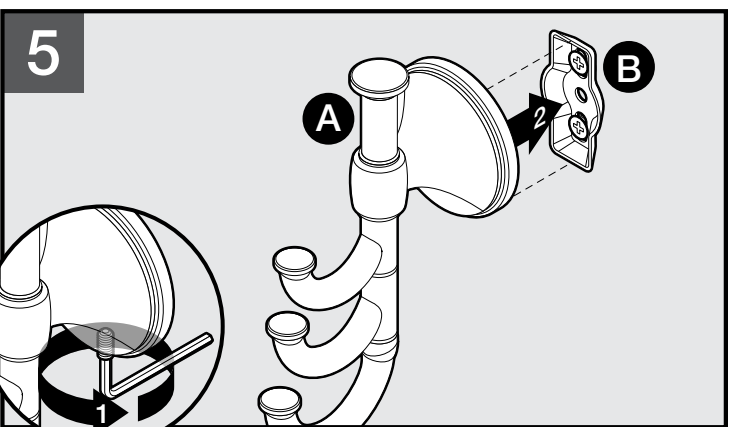
Coloque la plantilla contra la pared y verifique el nivel horizontal (use el borde inferior de la plantilla como guía). Fije con cinta adhesiva. Con un lápiz, marque los orificios en la pared a través de la plantilla.



Attach mounting bracket (B) facing outward to installed wall anchors (D) with two screws (C) using a Phillips screwdriver.

Fixer le support de montage (B) orienté vers l'extérieur aux chevilles murales (D) installées avec deux vis (C) à l'aide d'un tournevis à tête cruciforme.

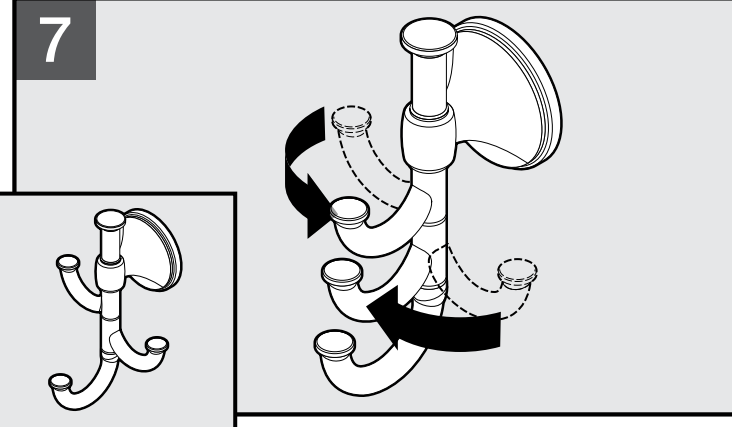
Fije el soporte de montaje (B) orientado hacia afuera a los pernos de sujeción para pared (D) con dos tornillos (C) con un destornillador Phillips.



Loosen set screw on the bottom of post (A) with an Allen wrench and attach post (A) to mounting bracket (B).

Desserer la vis d'assemblage en bas du poteau (A) avec une clé Allen. Fixer le poteau (A) au support de montage (B).

Afije el tornillo de sujeción de la parte inferior del vástago (A) con una llave Allen. Coloque el vástago (A) en el soporte de montaje (B).



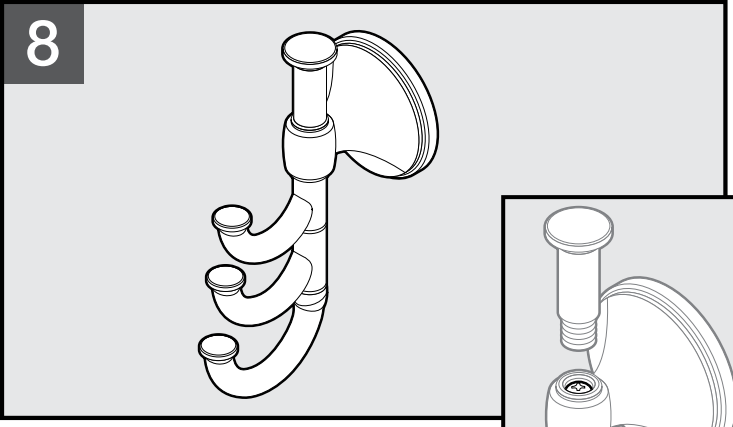
Rotate the expandable middle hook in either direction and align with bottom hook. Rotate the expandable top hook in either direction and align with bottom hook.

CAUTION: To avoid pinching, keep fingers or hands clear of moving parts. Tourner le crochet central extensible dans les deux sens et l'aligner avec le crochet inférieur. Tourner le crochet supérieur extensible dans les deux sens et l'aligner avec le crochet inférieur.

MISE EN GARDE: pour éviter tout pincement, garder les doigts et les mains éloignés des pièces mobiles.

Gire el Gancho extensible medio en cualquier dirección y alinee con el Gancho inferior. Gire el Gancho extensible superior en cualquier dirección y alinee con el Gancho inferior.

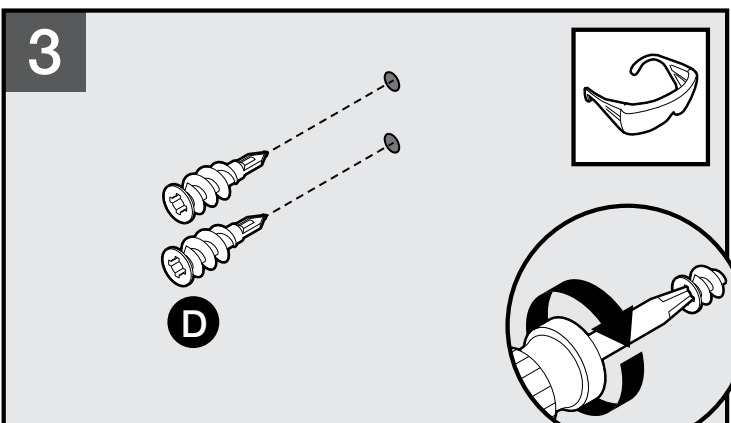
PRECAUCIÓN: Para evitar pellizcos, mantenga los dedos y las manos lejos de las piezas móviles.



Installed expandable hook in the closed position. Unscrew top and tighten or loosen Phillips screw to adjust hooks.

Installer le crochet extensible en position fermée. Dévisser le haut et serrer ou desserrer la vis à tête cruciforme pour régler les crochets.

Instale el Gancho en posición cerrada. Unscrew top and tighten or loosen Desatornille la parte superior y ajuste o afloje el tornillo Phillips para regular los ganchos.



Install auger wall anchor (D) with a Phillips screwdriver. NOTE: These instructions are for typical 1/2" drywall and do not include directions for installing into wood, tile or stucco. When installing directly into wood studs, use #6 1-1/4" wood screws (not included) and a 3/16" drill bit.

Installer la cheville d'ancrage (D) avec un tournevis à tête cruciforme. REMARQUE: ces instructions concernent les cloisons sèches classiques de 0,5 po (1,27 cm) et n'incluent pas d'indications d'installation dans du bois, du carrelage ou du stuc.

Coloque el perno de fijación de barrena para pared (D) con un destornillador Phillips. NOTA: Estas instrucciones son para mampostería típica de 1/2" y no incluyen instrucciones para instalar en madera, azulejos o estuco.

Limitations on the Warranty. The warranty does not cover: (a) normal wear and tear; (b) damage through abuse, neglect, misuse, or as a result of any accident or act of God; (c) improper installation or maintenance; (d) commercial, industrial, institutional or other nonresidential use; or (e) products altered without Liberty Hardware's prior written consent.

Obligations of Purchaser. If this product does not meet its warranty, return the product (postage prepaid) to the distributor or retailer from which it was purchased with proof of purchase and a written claim briefly describing the defect.

Limitations on Implied Warranties. IMPLIED WARRANTIES, INCLUDING ANY WARRANTY OF MERCHANTABILITY OR FITNESS FOR A PARTICULAR PURPOSE, ARE LIMITED TO THE SAME DURATION AS THIS EXPRESS WARRANTY.

Disclaimer. NO OTHER EXPRESS WARRANTY HAS BEEN MADE OR WILL BE MADE ON BEHALF OF LIBERTY HARDWARE WITH RESPECT TO THE PRODUCT.

State Law. This warranty gives you specific legal rights, and You also may have other rights, which vary from state to state.

140 Business Park Drive • Winston-Salem, NC 27107 www.libertyhardware.com 1-800-542-3789

CARE INTRUCTIONS / CONSIGNES D' ENTRETIEN / INSTRUCCIONES SOBREL CUIDADO. Care should be given to the cleaning of this product. Although its finish is extremely durable, it can be damaged by harsh abrasives or polish.

WARRANTY INFORMATION / RENSEIGNEMENTS SUR LA GARANTIE / INFORMACIÓN DE LA GARANTÍA. Liberty Hardware® Manufacturing Corporation LIMITED LIFETIME WARRANTY. GARANTIE À VIE LIMITÉE DE LIBERTY HARDWARE® MANUFACTURING CORPORATION.

Subject to the terms of this warranty, Liberty Hardware® Manufacturing Corporation ("Liberty Hardware") warrants to the original consumer purchaser ("You") that the product will be free from defects in material and workmanship.

Limitations on the Warranty. The warranty does not cover: (a) normal wear and tear; (b) damage through abuse, neglect, misuse, or as a result of any accident or act of God; (c) improper installation or maintenance; (d) commercial, industrial, institutional or other nonresidential use; or (e) products altered without Liberty Hardware's prior written consent.

Obligations of Purchaser. If this product does not meet its warranty, return the product (postage prepaid) to the distributor or retailer from which it was purchased with proof of purchase and a written claim briefly describing the defect.

Limitations on Implied Warranties. IMPLIED WARRANTIES, INCLUDING ANY WARRANTY OF MERCHANTABILITY OR FITNESS FOR A PARTICULAR PURPOSE, ARE LIMITED TO THE SAME DURATION AS THIS EXPRESS WARRANTY.

Disclaimer. NO OTHER EXPRESS WARRANTY HAS BEEN MADE OR WILL BE MADE ON BEHALF OF LIBERTY HARDWARE WITH RESPECT TO THE PRODUCT.

State Law. This warranty gives you specific legal rights, and You also may have other rights, which vary from state to state.

140 Business Park Drive • Winston-Salem, NC 27107 www.libertyhardware.com 1-800-542-3789