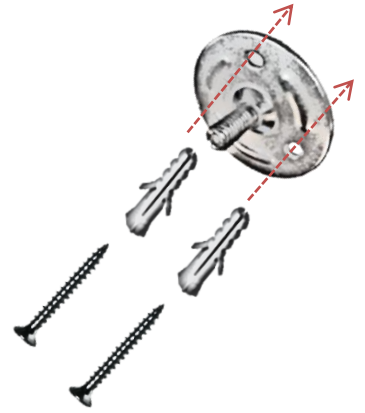


Installation manual

Wooden curtain rod set

1/3

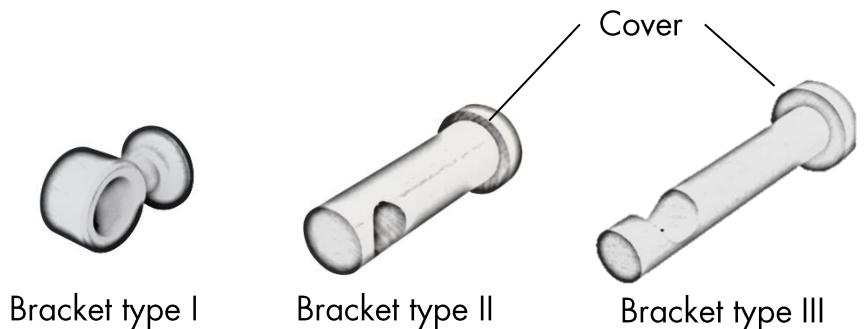


Step 1 A

Mount the wall piece of each bracket to the wall by using at least 2 plugs and screws, which are included in the packaging.

Step 1 B

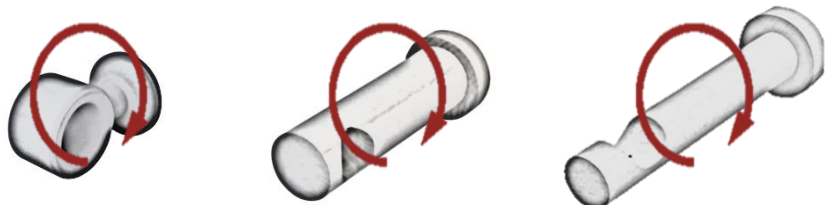
For bracket types II and III put the cover over the wall piece.



Step 2

Attach the main part of the bracket by rotating it clockwise on the wall piece.

The pre-drilled holes in the brackets help to attach the main part. Rotate till the brackets are firmly tightened.



Installation manual

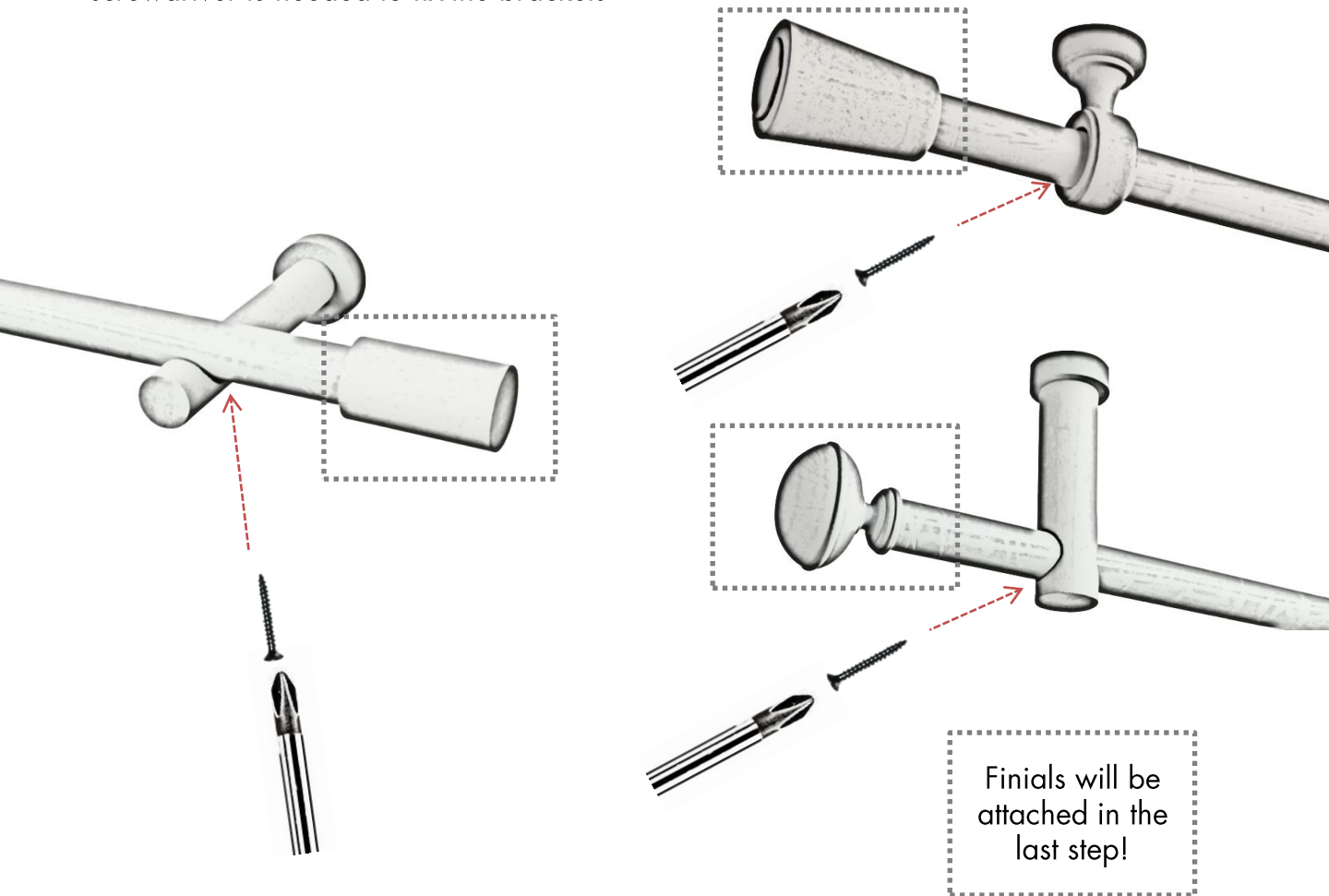
Wooden curtain rod set

2/3

Step 3

Attach the rod (including the curtain) and fixate the brackets by attached the screws from the not visible side of the bracket.

Screws are included in the packaging. A crosshead screwdriver is needed to fix the brackets



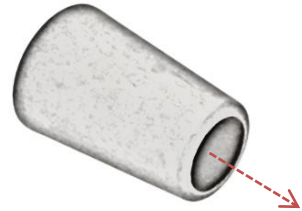
Installation manual

Wooden curtain rod set

3/3

Step 4 A

The first type of finials are just put on the end sides of the rod and just should be pushed a bit to be fixed.



Step 4 B

The second type of finials are attached to the end sides of the rod by using a 2-sided screw. Put 1 side of the screw in the pre-drilled hole in the finial and the other side in the pre-drilled hole in the pole. Now rotate the finial clockwise to the rod.

If you struggle to get the screw into the wood, make a start by using a tang.

The 2-sided screws are included in the packaging.

