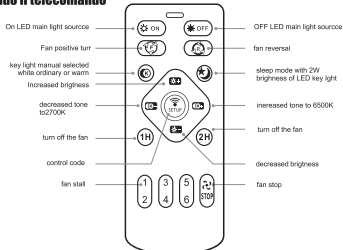


Fan lamp product installation manual

Warning

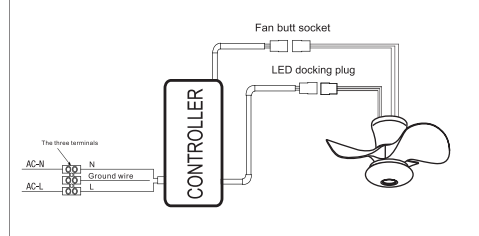
1. Please disconnect the power before installation.
2. The installation and maintenance must be carried out by professional and technical personnel.
3. If damaged, please replace it with the dealer immediately before use.
4. Turn off the power when cleaning the lamp, otherwise it will cause unsafe accidents.
5. Do not touch the lamp when it is working to prevent insecurity.
6. Please confirm whether the ceiling can bear the weight of the lamp before installation.
7. Thank you for using our products and live up to your expectations with awe.

Usando il telecomando

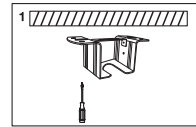


Turn on the power switch, press the "pair code" key within 3 seconds, the receiver issued a "tick" two sounds, the pair code is successful. If not successful, turn off the power for a minute and repeat the above. Warm tips: Check the battery when the remote control is not effectively controlled, please remove the battery for a long absence.

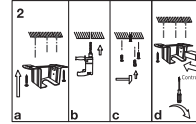
The wiring method of the controller



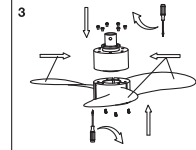
Derrick fan lamp installation method



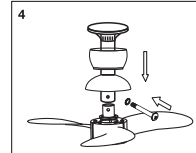
1, as shown in figure, for fan base Template tags drill point.



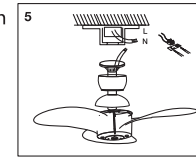
2, drilling was carried out on the marked points, Base with screws.



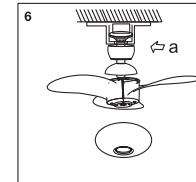
3, the blade central card into the electrical and mechanical, The number of the alignment. (the above 6 Fixed, under 3) Screw.



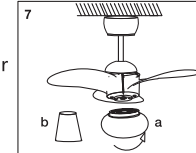
4, will suck in particular is fixed at the top of the motor Department of well hole, the screws.



5, the controller of the light source The son, the motor terminal respectively For good, and at the top of the electricity Cable connection.



6, into the top card on the derrick Base stability, load Lamp plate, screw.

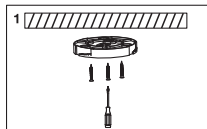


7, a good light source line, chimney On the bottom of the well hangs Taiwan bayonet, Rotate in place. B hypotenuse disc alignment hangs Taiwan holes And screws.

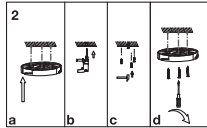
Warranty Card

Product number		Item number		Purchase date		Invoice number	
Username		contact number				Postcode	
Address							
Remarks: After purchasing this product, please ask the local distributor about installation				Dealer phone			
Maintenance records							

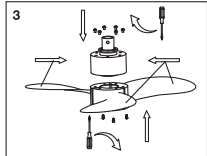
Pay attention to things:
 This product uses high-efficiency heat dissipation materials, and it is normal for the lamps to become hot
 The lamp cannot be covered by heat insulation pads or sand



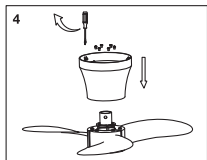
1, as shown in figure, for fan base Template tags drill point.



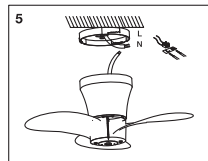
2, drilling was carried out on the marked points, Base with screws.



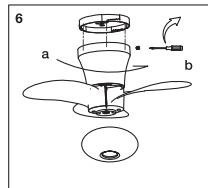
3, the blade central card into the electrical and mechanical, The number of the alignment. (the above 6 Fixed, under 3) Screw.



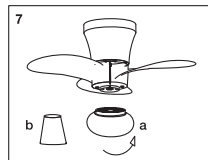
4, will suck in particular is fixed at the top of the motor Department of well hole, the screws.



5, the controller of the light source The son, the motor terminal respectively For good, and at the top of the electricity Cable connection.



6, rotation in particular with the top Base stability, screw fixation.



7, a good light source line, chimney On the bottom of the well hangs Taiwan bayonet, Rotate in place. B hypotenuse disc alignment hangs Taiwan holes And screws.