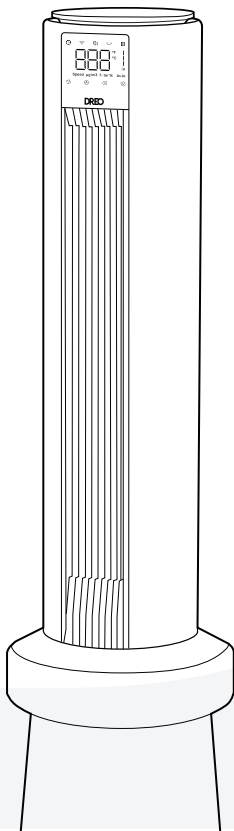


DREO | Smart 2-in-1 Tower Fan

USER MANUAL



”

Thanks for Choosing **DREO!**

Your support means the world to us. We hope you enjoy our product as much as we did creating it.

CONTENTS

01

KNOWING YOUR SMART
2-IN-1 TOWER FAN

1

02

USING YOUR SMART
2-IN-1 TOWER FAN

4

03

CLEANING AND
MAINTENANCE

8

04

TROUBLESHOOTING

13

05

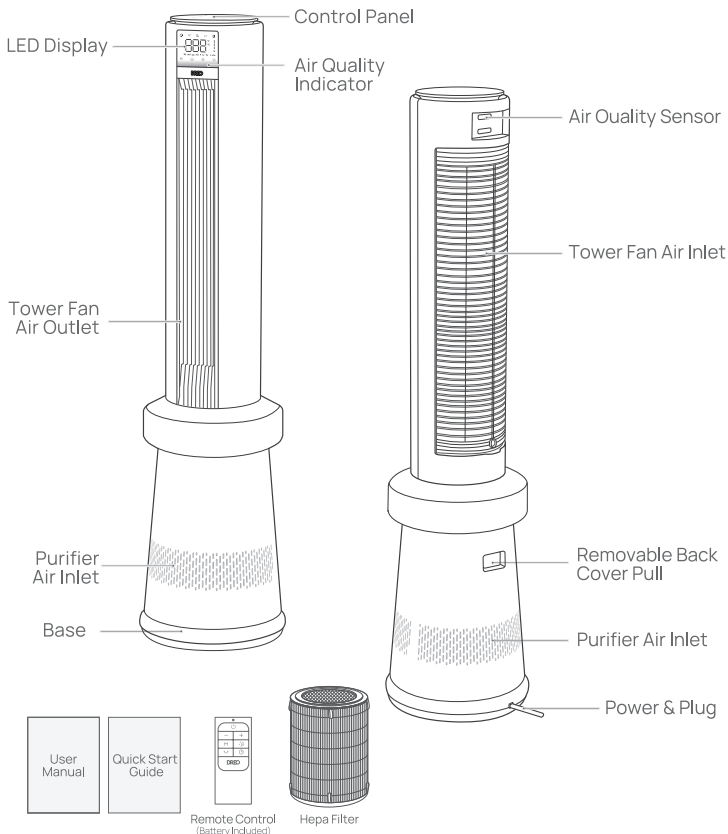
DREO CUSTOMER
CARE

16

KNOWING YOUR SMART 2-IN-1 TOWER FAN

01

Package Contents



Control Panel



Power Button

- On/Off
- Long press 10S to reset to factory settings.



Tower Fan Mode Button

- Switch between Normal/Auto/Sleep/No Wind



Purification Mode Button

- Switch between 1-2-3-A-0 levels in Normal/Sleep/Auto Mode
- Switch between 1-2-3-A levels in No Wind Mode



Increase Button

- Increase Tower Fan Speeds (1-12 Levels) excluding No Wind Mode



Decrease Button

- Decrease Tower Fan Speeds (12-1 Levels) excluding No Wind Mode



Information Button

- Switch between wind speed/PM2.5 data/filter life/ambient temperature



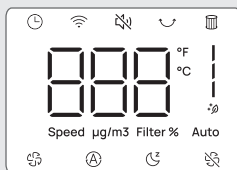
Timer Button (0-24H)



Oscillation Button

- 30°/60°/90°/120°
- Long press 5S to start network setting and device pairing

LED Display



NOTE: This 2-in-1 tower fan features auto-brightness. The display adapts automatically based on the ambient lighting conditions.

Air Quality Indicator Light

Light Color	Air Quality Level
Blue	Excellent
Green	Good
Orange	Moderate
Red	Poor

USING YOUR SMART 2-IN-1 TOWER FAN

02

Working Modes

Tower Fan Mode:



Normal Mode

Runs at the fixed speed.



Auto Mode

Wind/Purifying speed adapts to the Ambient temperature.



Sleep Mode

(Mute Auto On)

2-in-1 Tower Fan speed decreases every 30 minutes.

Speed decreases by three levels at most and will remain constant if at level 3, 2, or 1:

For level 12: 12 → 11 → 10 → 9

For level 11: 11 → 10 → 9 → 8

For level 10: 10 → 9 → 8 → 7

For level 9: 9 → 8 → 7 → 6

For level 8: 8 → 7 → 6

For level 7: 7 → 6 → 5

For level 6: 6 → 5 → 4

For level 5: 5 → 4 → 3

For level 4: 4 → 3

For level 3: 3

For level 2: 2

For level 1: 1

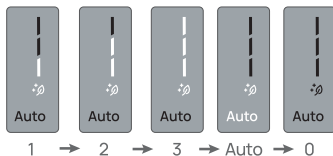


No Wind Mode

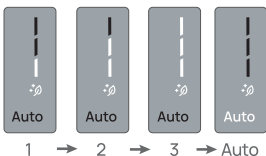
Without airflow but still improves air purification

Purification Mode:

Switch between 1-2-3-A-0 levels in Normal/Sleep/Auto Mode



Switch between 1-2-3-A levels in No Wind Mode



A: Speed adapts to the ambient air quality.
0: No purifying the air.

Additional Features




Change Oscillation Angle

The oscillation angle can be set to 30/60/90/120 degrees.




Timer

When the fan is ON/OFF, touch the timer button  repeatedly to set a timer from 1 to 24 hours. When the timer ends, the fan will stop/start running automatically. To cancel, set the time to 0 hour.

Note: When the auto off timer is enabled, display will return to fan speed after 3 seconds.



Mute

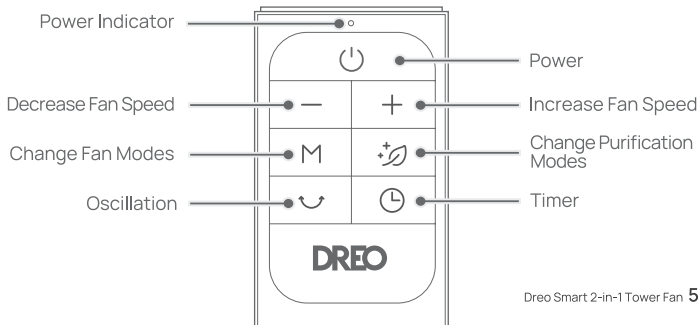
Long press the mode button  on the control panel to turn on/off button sounds.



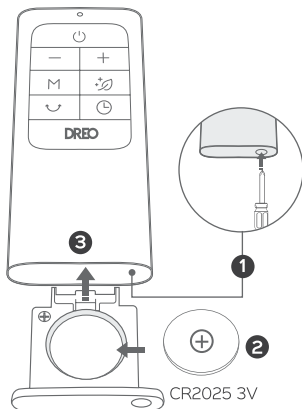
Memory

If the fan is turned OFF or disconnected from power, it will operate under the previous settings (except the timer setting) when it is turned ON again.

Remote Control



Battery Replacement



- 1 Press the locking button to pop out the battery holder.
- 2 Replace with the same battery type with the (+) side facing up.
- 3 Push in the holder until securely locked into place.

Note: If the indicator on the remote control doesn't turn on any more, please consider replacing the battery.



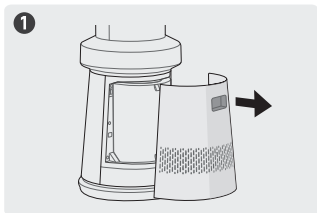
WARNING

Chemical Burn Hazard. Keep batteries away from children.

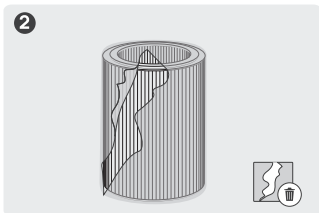
This product contains a lithium button/coin cell battery. If a new or used lithium button/coin cell battery is swallowed or enters the body, it can cause severe internal burns and can lead to death in as little as 2 hours. Always completely secure the battery compartment. If the battery compartment does not close securely, stop using the product, remove the battery, and keep it away from children. If you think batteries might have been swallowed or placed inside any part of the body, seek immediate medical attention.

The batteries must be disposed of properly, including keeping them away from children. Even used cells may cause injury.

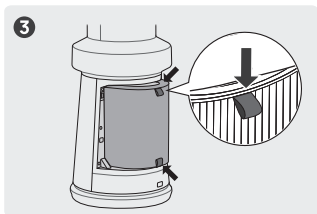
Getting Started



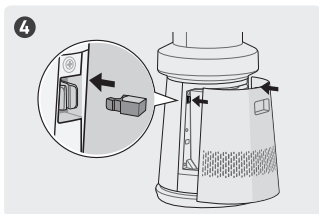
1 Locate the back handle and softly pull it to remove the back cover.



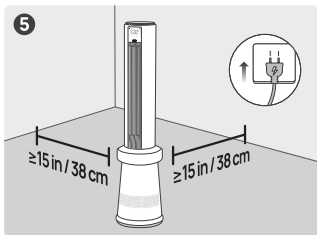
2 Remove the filter from its plastic packaging.



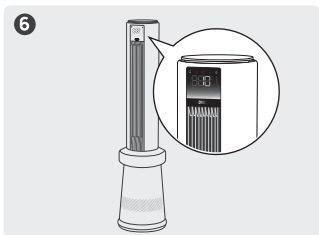
3 Put the filter back in position by making sure both straps are pointing outwards.



4 Make sure the base of the filter is within the marked guidelines, then close the back cover.



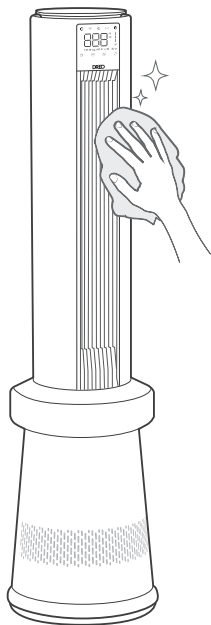
5 Place the 2-in-1 tower fan on a flat, stable and clear surface, plug the 2-in-1 tower fan into the power outlet.



6 After plugging your 2-in-1 tower fan, the air quality sensor will warm-up for 10 seconds, if turned on during this phase, lights will cycle and the screen will show a warm-up countdown. You can still operate the 2-in-1 tower fan during this phase.

CLEANING AND MAINTENANCE

03



Outer Surface

Gently wipe off the dust with a soft, dry cloth.

CAUTION



1. Always unplug the fan before any cleaning or maintenance to avoid the risk of fire, electric shock, or injury to persons.
2. Do not immerse in water or get water inside the motor housing.
3. Do not use any chemical agents when cleaning the fan.
4. Store in a cool, dry place and cover it to protect from dust.

Rear Grille

Replacing the Filter

The filter life is measured by the 2-in-1 tower fan's algorithm based on the operating mode, fan speed, run time, and indoor air quality. It's recommended to replace the filter every 6-8 months or when the filter change reminder alerts.

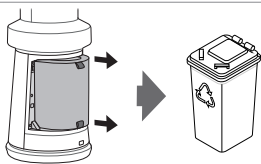
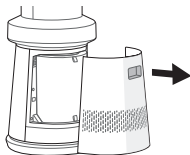


1

The Filter Change Reminder will flash when the filter needs to be replaced. Turn off and unplug the 2-in-1 tower fan.

Locate the back handle and softly pull it to remove the back cover of your 2-in-1 tower fan.

2

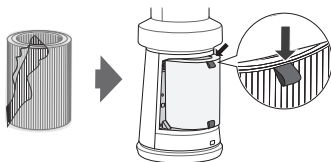


3

Pull the old filter out from the straps. Properly dispose the old filter after removing it from the 2-in-1 tower fan.

Remove the plastic wrap of your new filter then carefully place it within the 2-in-1 tower fan. Make sure both straps are pointing outwards and the filter is within the marked guidelines before closing the back cover.

4



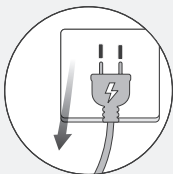
5

Plug in the 2-in-1 tower fan. Long press the **INFO** button for 5 seconds (until hearing the beep) to reset the filter change reminder.

Note: you can also reset the filter change reminder directly from the Dreo App.

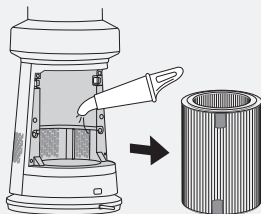
Cleaning the Inside & Outside

1



Unplug the 2-in-1 tower fan before any cleaning and maintenance.

2



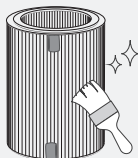
Remove the filter and clean the inside with a dust vacuum.

3



Wipe clean the housing with a dry, soft, non-abrasive cloth.

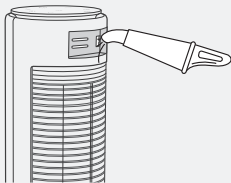
4



For optimal use, the outer pre-filter can be cleaned with a soft, dry brush once every 2-4 weeks.

5

It is recommended to clean the AQ sensor on the back with a dust vacuum at least every three months.

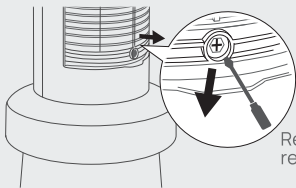




WARNING

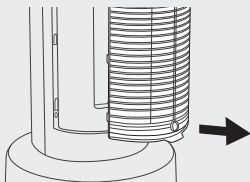
Turn off the appliance and unplug before any cleaning and maintenance.

1



Remove the screw on the top of the rear grille with a Philips screwdriver.

2



Lift up the grille and pull it out.

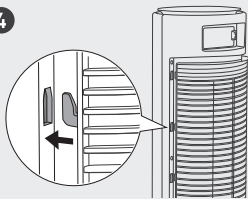
3



Clean the dust on blades using a vacuum cleaner or air duster. Rinse the rear grille under running water or with a clean, damp cloth.



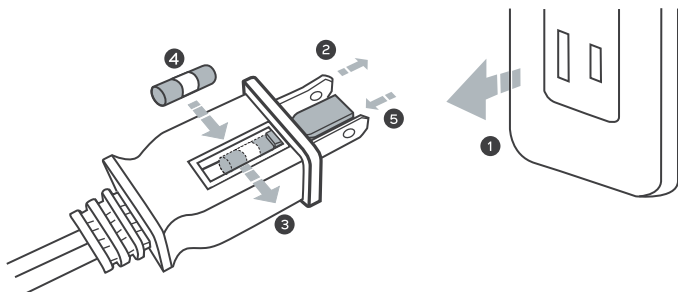
4



Dry up, then install the grille and the screw back in place, making sure the bottom pegs are fully inserted into the slots.

User Servicing Instructions (Fuse)

This appliance features a fused safety plug that protects against overload or short-circuit situations. If the fuse blows, please cut off power and follow the below instructions or consult a qualified electrician.



- 1** Grasp plug and remove from the receptacle or other outlet device. Do not unplug by pulling on cord.
- 2** Open fuse cover. Slide open fuse access cover on top of attachment plug towards blades.
- 3** Remove fuse carefully. Push the fuse from the other side to remove the fuse.
- 4** Risk of fire. Replace fuse only with 10 Amp.125 Volt fuse.
- 5** Close fuse cover. Slide closed the fuse access cover on top of attachment plug.



WARNING


Risk of fire. Do not replace attachment plug. Contains a safety device (fuse) that should not be removed. Discard product if the attachment plug is damaged.

Related to the Filter

Where can I buy a new filter?

1. Please purchase from Dreo official website: www.dreo.com.

I changed the filter, but the Filter Change Reminder is still on.

1. The Filter Change Reminder will not automatically reset. Please press and hold the  Filter Reset button to reset the reminder, the indicator will turn off after reset.

The Filter Change Reminder has not turned on for a long period of time.

1. There are several factors that can impact the filter life, including the indoor air quality level, length of operation and particle density in the air. If your room has a better air quality level and / or you don't use your 2-in-1 tower fan often, the reminder will take longer to light up.

Related to Use

Why is my 2-in-1 tower fan not working?

1. Check if the power is connected, the power cord is damaged, or the electrical outlet is powered.
2. Make sure that there is enough space around the 2-in-1 tower fan.
3. Check if the filter packaging has been removed.
4. Fan speed will be low when auto mode is switched on and air quality is good. Try to switch to higher speed or turbo mode.
5. Replace the filter if the filter is clogged and overloaded.

My 2-in-1 tower fan doesn't improve the air quality.

1. Check if the filter packaging has been removed.
2. Make sure the windows are closed as polluted air may continue coming in from outside of the windows.
3. The overloaded filter will make the fan work harder to pass the air through. Consider replacing the filter if it is clogged.
4. Do not place in crowded areas and corners.
5. Check if air outlet and inlet are obstructed.

Why is my 2-in-1 tower fan making a loud noise?

1. The turbo mode will produce higher noise level as the fan is at the maximum speed to clean the air in the room more quickly.
2. Switch the 2-in-1 tower fan to sleep mode or lower fan speeds.

Why is the Air Quality indicator is always red?

1. The Air Quality sensor may need to be cleaned.
2. Ultrasonic humidifiers usually release large particles with their mist. If a humidifier is placed near the sensor. The sensor may be detecting and reporting the large particles coming from the humidifier. Avoid using both appliances at the same time, or switch the 2-in-1 tower fan to another mode besides Auto Mode.

The odor in the room is very strong, but the Air Quality Indicator is only green or blue.

1. The Air Quality Sensor detects PM 2.5 particles but cannot detect odors. If you feel that the indoor air odor is relatively strong, it is recommended to manually open the highest fan speed.

My fan is shaky and wobbling!

1. Please the fan on a flat, level surface.

If your problem is not listed or still persists, please contact our Customer Support (see page 17).

DREO CUSTOMER CARE

05

Extend Your Warranty

Extend your warranty by registering your new appliance on our website <https://dreo.com/warranty>.

The warranty will not apply in cases of:

- Accident, misuse, or repairs performed by unauthorized personnel.
- Any unit that has been tampered with or used for commercial purposes.
- Normal wear and tear of wearable parts.
- Use of force, damage caused by external influences.
- Damage caused by non-observance of the User Manual, e.g. connection to an unsuitable mains supply or noncompliance with the instructions.
- Partially or completely dismantled appliances.
- Defects caused by or resulting from damages from shipping or from repairs, service, or alteration to the product or any of its parts that have been performed by a repair person not authorized by DREO.

We can only provide after-sales service for products that are sold by DREO or DREO authorized retailers and distributors. If you have purchased your unit from a different place, please contact your seller for return and warranty issues.

FCC STATEMENT

This device complies with Part 15 of the FCC Rules.

This equipment has been tested and found to comply with the limits for a Class B digital device, pursuant to Part 15 of the FCC Rules. These limits are designed to provide reasonable protection against harmful interference in a residential installation. This equipment generates, uses and can radiate radio frequency energy and, if not installed and used in accordance with the instructions, may cause harmful interference to radio communications. However, there is no guarantee that interference will not occur in a particular installation. Please note that changes or modifications of this product is not expressly approved by the party responsible for compliance could void the user's authority to operate the equipment. If this equipment does cause harmful interference to radio or television reception, which can be determined by turning the equipment off and on, the user is encouraged to try to correct the interference by one or more of the following measures:

- Reorient or relocate the receiving antenna.
- Increase the separation between the equipment and receiver.
- Connect the equipment into an outlet on a circuit different from that to which the receiver is connected.
- Consult the dealer or an experienced radio/TV technician for help.

This equipment complies with FCC radiation exposure limits set forth for an uncontrolled environment. This equipment should be installed and operated with a minimum distance of 20cm between the radiator & your body. This transmitter must not be co-located or operating in conjunction with any other antenna or transmitter.

2023.09.12_1.0

We're Here to Help!

 (888) 290-1688 Mon - Fri, 9:00 am-5:00 pm PST/PDT

 www.dreo.com  support@dreo.com

 Shenzhen Hesung Innovation Technology Co., LTD
 26F, Bldg A7, Creative City, Shenzhen, China



MADE IN CHINA



DREO

www.dreo.com

Looking for help?

Contact us to get expert support.



(888) 290-1688 (Only for N.A.)

Mon - Fri, 9:00 am-5:00 pm PST/PDT



support@dreo.com (N.A.)

uk-support@dreo.com (U.K.)

eu-support@dreo.com (E.U.)



www.dreo.com