

Stainlifter

Carpet & Upholstery Cleaner



Lift
Pet Stains
Out!

Multi-Surface Cleaning Action

User Guide

Table of Contents

1.	Introduction and Features
2.	What's in the Box
2.1	Main Parts and Accessories
3.	Setting Up
3.1	Using the StainLifter
3.2	Cleaning the StainLifter
3.3	Storing the StainLifter
4.	Important Safeguards
5.	Customer Support
6.	Specifications

1

Introduction and Features

Meet your new StainLifter, the solution to all your spot-cleaning needs! Featuring a potent spraying function and up to 12kPa of suction power, this multi-surface spot cleaner can quickly remove even the toughest stains from carpet, upholstery, rugs, beds, sensitive surfaces, and even auto interiors. Pair it with a carpet cleaning solution for an even more effective deep clean – you only need to spray, scrub, and vacuum your soiled surfaces to quickly and permanently lift any type of spot, from wine spills to pet stains! Its large-capacity dual water tanks make it easy to clean large areas, while its compact and lightweight design allows for greater portability and ease of use.

- **Up to 12kPa of suction power.**
- **Compact & lightweight for easy portability and storage.**
- **Large-capacity dual water tanks.**
- **Self-cleaning functionality.**
- **Sprays, brushes, and vacuums even the toughest spots and strains.**

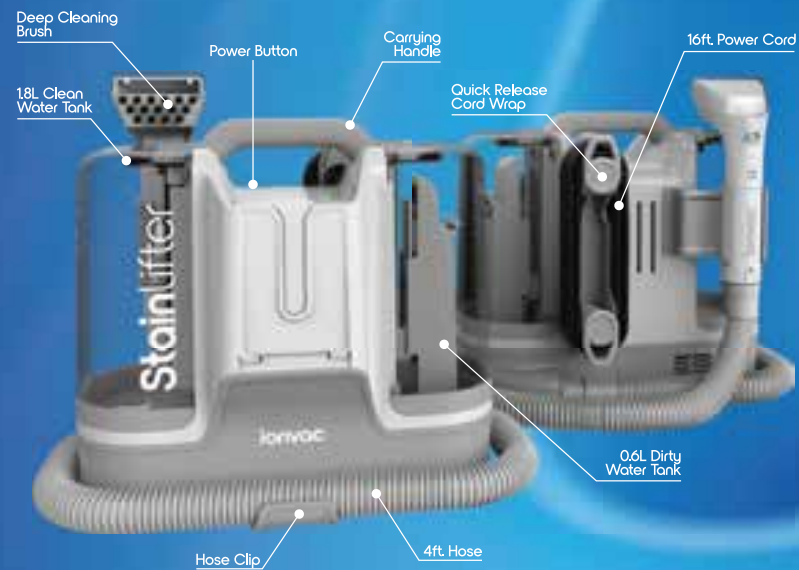
2

What's in the Box

- ionvac StainLifter
- Quick Release Cord Wrap
- Brush Bracket
- Hose Clip
- Hose
- Deep Cleaning Brush
- Self-Cleaning Head
- User Guide

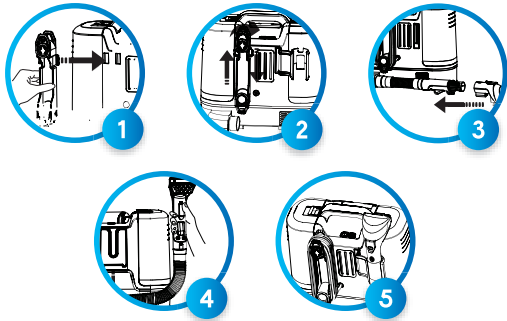


2.1 Main Parts and Accessories



3

Setting Up

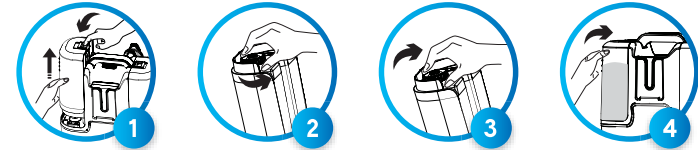


1. Attach the Quick Release Cord Wrap to the back of the StainLifter by snapping it into the slot on the upper left side of the machine.
2. Wrap the power cord around the Quick Release Cord Wrap.
3. Connect the Deep Cleaning Brush tool to the hose.
4. Wrap the Hose around the StainLifter and insert the hose into the Hose Clip to keep it tidy and in place.
5. Insert the Brush into the Brush Bracket for storage.

3.1

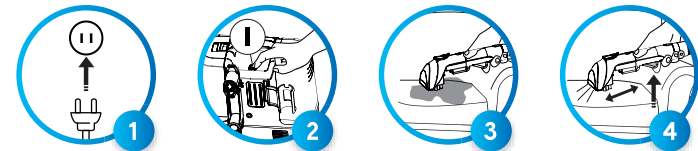
Using The StainLifter

Filling the Clean Water Tank



1. Press the clip on top of the Clean Water Tank to detach it from the machine.
2. Unscrew the cap on the bottom of the Clean Water Tank, then add water and cleaning solution to the max fill line.
3. Screw the cap back on tightly.
4. Insert the Clean Water Tank back into the StainLifter.

Cleaning with the StainLifter

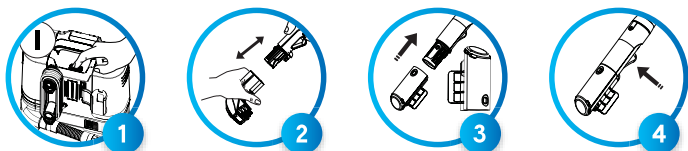


1. Plug the power cord into a nearby AC outlet.
 2. Press the Power button on top of the StainLifter to turn it ON.
 3. Place the brush nozzle over the spot or stain to be cleaned. Then press the spray trigger on the hose grip to spray cleaning solution over the stain.
 4. Slowly move the brush head back and forth to scrub and vacuum the stain away.
- NOTE:** Do not spray too much cleaning solution on the surface to be cleaned.

3.2

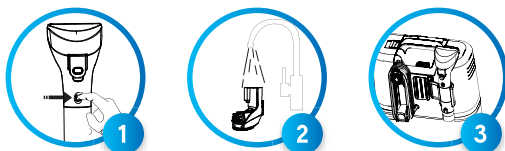
Cleaning The StainLifter

Self Cleaning



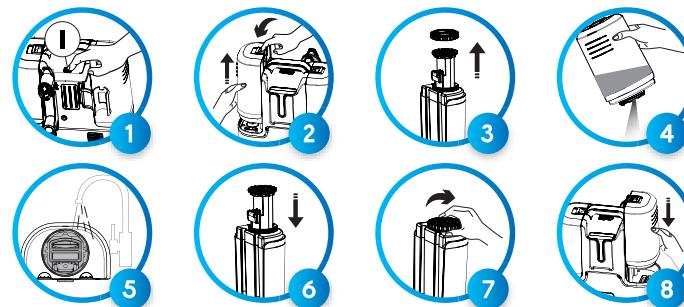
1. Make sure that the StainLifter is OFF.
2. Remove the brush head from the hose.
3. Connect the self-cleaning head to the hose.
4. Power the StainLifter ON and press the spray trigger on the hose grip to activate the self-cleaning function.

Cleaning the Brush Nozzle



1. Press the small button at the bottom of the brush nozzle and pull the brush off the hose.
2. Wash the brush and let it dry completely.
3. You can use the Brush Bracket to store the brush nozzle when it is not in use.

Cleaning the Dirty Water Tank



1. Turn the StainLifter OFF and unplug it from the power outlet.
2. Remove the Dirty Water Tank by pressing the release button on top.
3. Unscrew the cap and remove the buoy bracket.
4. Pour out the dirty water.
5. Hand-wash the dirty water tank with clean water.
6. Wash the buoy bracket and dry it completely before reinserting it back into the Dirty Water Tank.
7. Screw the cap back on tightly.
8. Reinstall the Dirty Water Tank, making sure it clicks into place.

3.3

Storing The StainLifter



1. Wrap the power cord around the Quick Release Cord Wrap.
2. Wrap the hose around the machine and fit it into the hose clip to secure it in place.

4. Important Safeguards

Read all the instructions carefully before using the StainLifter.
Keep this user guide for future reference.

- Only use the StainLifter as indicated in this user guide.
- The StainLifter is for indoor domestic use ONLY. Do not use it outdoors.
- Always unplug the StainLifter from the power outlet when it is not in use.
- Do not immerse the StainLifter in water or any other liquid.
- Do not operate the StainLifter if it has been damaged, dropped, left outdoors, wetted, or if it is malfunctioning or operating in an abnormal way.
- Do not use the StainLifter with a damaged power cord or plug. If the power cord is frayed or damaged, it must be replaced by the manufacturer or an authorized service agent.
- Keep away from children.
- Do not unplug the StainLifter by pulling on the cord. Grasp the plug instead.
- Do not handle the power cord, including the plug and the plug terminal, with wet hands.
- Do not use the StainLifter to pick up flammable or combustible liquids (e.g., gasoline) or toxic materials (e.g., chlorine bleach, ammonia, drain cleaner, etc.), or use in spaces where they may be present.
- Do not carry the StainLifter while it is in use.
- Keep the StainLifter on a level, stable surface.
- Keep all openings and vents clean, unobstructed, and free of dust, lint, hair, or anything that might reduce airflow. Do not use the StainLifter with any blocked openings.
- Keep hair, all body parts, and items of clothing away from the StainLifter's suction opening.
- Do not attempt to alter, disassemble, repair, or modify the StainLifter in any way. Doing so will void any warranty in place and may put the user at serious risk. Any repairs should be conducted by a qualified technician.

5. Customer Support

If you have questions about using the ionvac StainLifter, we are here to help! Call or email us, and an experienced customer support representative will be happy to assist you: **1-855-GO-TZUMI** or **support@tzumi.com**.

6. Specifications

Input	110-120V ~ 50/60Hz
Power	450W
Suction Power	12kPa
Clean Water Tank Capacity	1800ml
Dirty Water Tank Capacity	600ml
Sound Level	78dB
Size	9.25 x 12.6 x 13 in.
Weight	8.4 lbs.

ionvac StainLifter, Distributed by tzumi Inc, NY, NY, 10016.
©Copyright 2023 tzumi Inc, All Rights Reserved. Made in China.
All other trademarks and trade names are the property of their respective owners. All pictures shown are for illustration purposes only. The actual product may vary due to product enhancement.
Subject to change without prior notice.

For more details on
the ionvac family of products,
or to check out more brilliant
innovations, visit: www.tzumi.com.

tzumi®
live awesome.