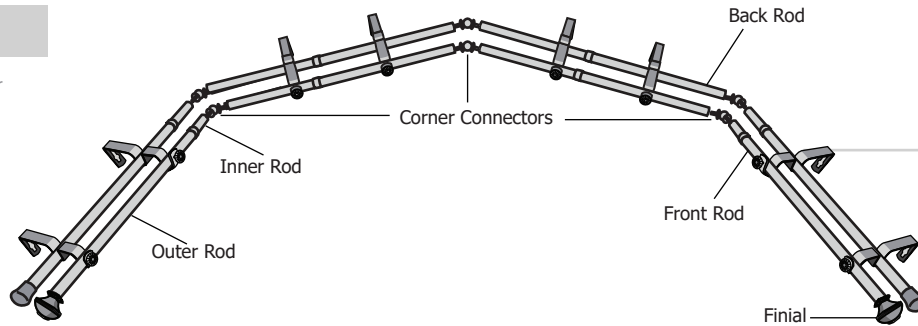


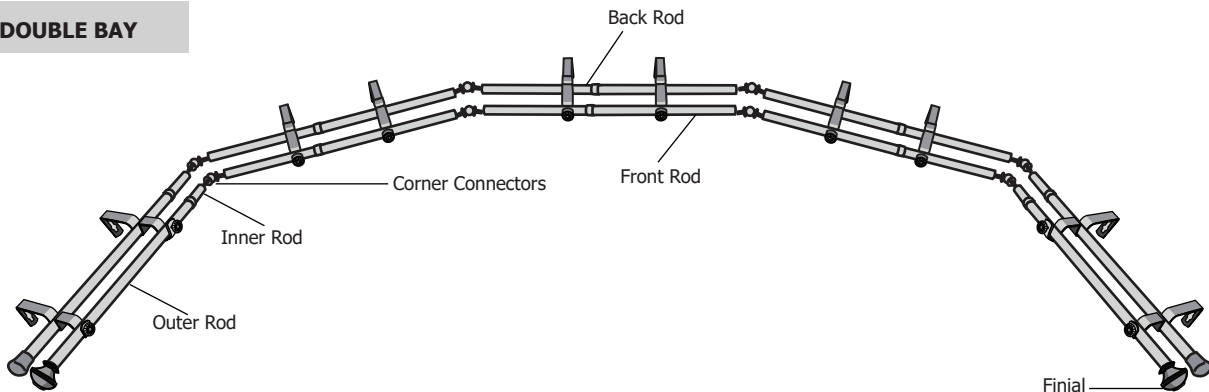
INSTALLATION INSTRUCTIONS FOR 4, 5, & 6 SIDED DOUBLE BAY RODS

4 SIDED DOUBLE BAY

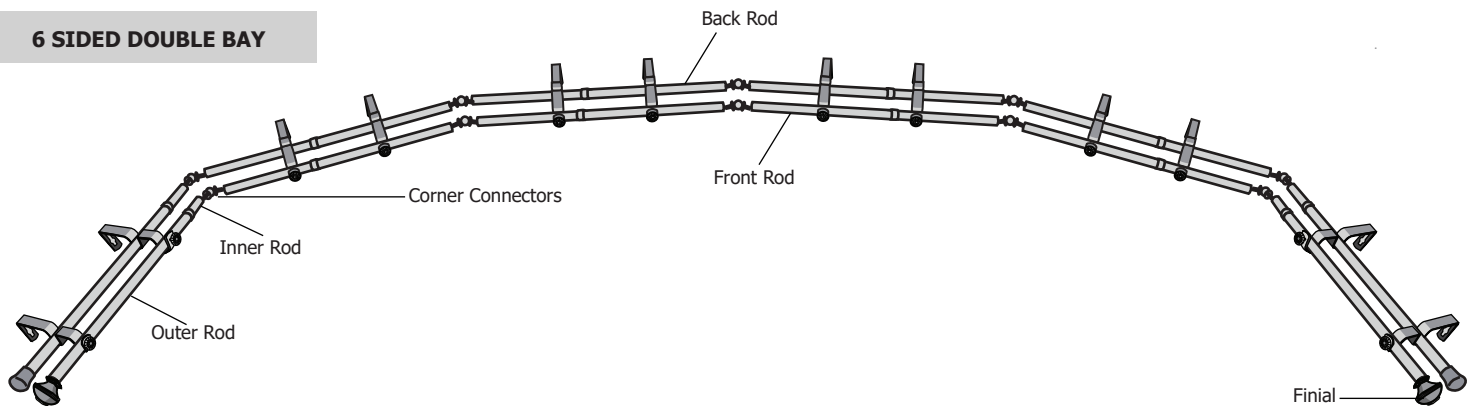
NOTE: Finials shown are for illustration purposes only.



5 SIDED DOUBLE BAY



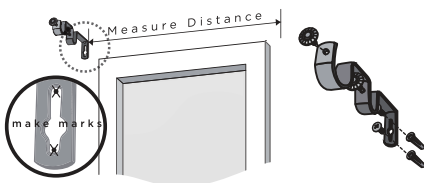
6 SIDED DOUBLE BAY



1

Mounting Bracket

Spot and mount brackets above window using a level to ensure accuracy. Use anchors with screws for drywall installs.



2

Rod Assembly

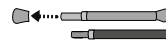
Build the rod parts by sliding the rod segments together. Depending on the drapes attachment method, slide the rod pockets or the rings over the assembled rod segments.

(Please see the diagrams above)

3

Back Rod End Caps

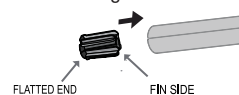
All the back rods come with a pair of end cap.
a. Remove all end caps except the ones on the very end of each side.



b. Insert provided plastic finial adapter.



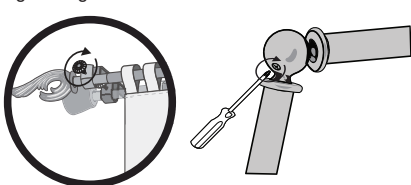
There are two diameters of plastic inserts included. (Skip this step if inserts are already attached to rod.) Push corresponding insert into each end of rod with fin side going into the pole and flat end facing out.



5

Hanging the Rod

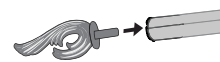
Hang the assembled rods by loosening the brackets' front adjustment screws and dropping the rods in. Once hung, tighten both brackets' tightening screws and connectors tightening screws.



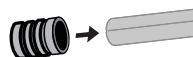
6

Attaching Finials

a. Attach finials by pushing and turning the end of the finial post into the end of the finial insert until completely snug. Rotate finial on rod for proper alignment if required.



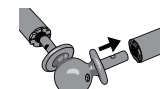
b. For hollow type finials with no post, slide finials onto each end. Finial inserts are not necessary for this type.



4

Attaching Rod Connectors

Insert the rod connector to one rod and then loosen the connector's tightening screw to find the correct angles. Tighten the screw a little bit on the connector to lock the angle into place to the other rod and push the rod to the open end of the rod connectors.



DRYWALL ANCHOR INSTALLATION



If screws are going directly into wood trim or wall studs - drill 1/8" (3mm) holes and install screws through bracket. If screws are going into hollow wall - drill 3/16" (5mm) holes and push or lightly hammer plastic anchors into holes. Then install screws through brackets. Do not tighten screws too much - just snug is best.