



High Efficiency Polycrystalline Photovoltaic Module

Overview

- High efficiency solar cells with quality silicon material for high module conversion efficiency and long term output stability and reliability.
- Unique frame design with strong mechanical strength for up to 50 lbs./sq ft. wind load and snow load withstanding, mounting holes provided for easy installation.
- High transmittance, low iron tempered glass with enhanced stiffness and impact resistance.
- Advanced encapsulation material with multilayer sheet lamination to provide long-life and enhanced cell performance.
- Rigorous quality control to meet the highest international standards.
- Outstanding electrical performance under high temperature and weak light environments.
- Built in blocking diodes prevent reverse current flow.

Applications

- Any large or small on-grid /off-grid solar power stations.
- Commercial/industrial building roof-top and ground systems.
- Residential roof-top and ground systems.

Warranty

- 10 year limited product warranty on materials and workmanship.
- 25 year warranty on >80% power output and 10 year warranty on >90% power output.
- Refer to warranty document for detailed warranty information.

Certifications

UL1703, CEC Listed, MCS and CE
 ISO 9001: 2008: Quality management systems, ISO 14001: 2004: Environmental management systems
 BS OHSAS 18001: 2007: Occupational health and safety management systems
 Type 1 Fire Classification

Mechanical Specifications

Characteristic	Details
Cell Size	156mm x 156mm (6.14" x 6.14")
Module Dimension (L x W x T)	1650mm x 990mm x 35mm (64.6" x 39.1" x 1.37")
No. of Cells	60
Weight	18.2 kg (40.9 lbs)
Cable Length	900mm for positive (+) and negative (-)
Type of Connector	MC-IV comparable
Junction Box	IP65 Rated
No. of Holes in Frame	8 installation holes, 16 drainage holes, 4 grounding holes



MODEL: GS-P60-265-Fab2

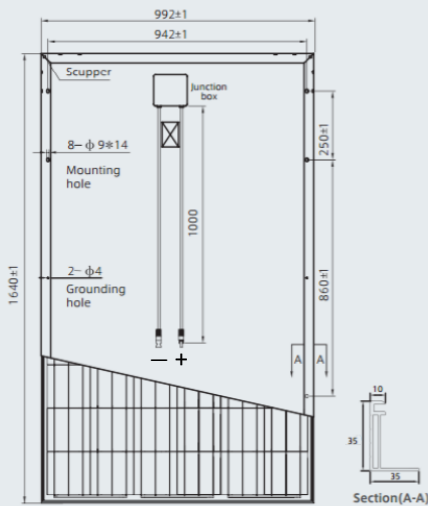
Electrical Specifications

(STC* = 25 °C, 1000W/m² Irradiance and AM=1.5)

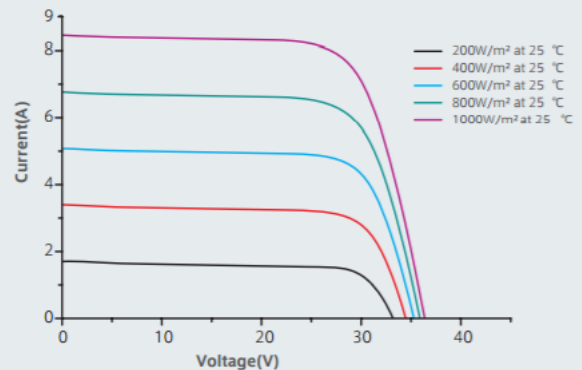
Model	GS-P60-265-Fab2
Max System Voltage (IEC/UL)	1000V
Maximum Power P _{max}	265 W* (0%, +5%)
Listed PTC Power	239.4 W
Voltage at Maximum Power Point V _{mpp}	30.96 V
Current at Maximum Power Point I _{mpp}	8.56 A
Open Circuit Voltage V _{oc}	38.14 V
Short Circuit Current I _{sc}	9.1 A
Module Efficiency (%)	16.21%
Temperature Coefficient of V _{oc}	-0.33% /°C
Temperature Coefficient of I _{sc}	+0.058% /°C
Temperature Coefficient of P _{max}	-0.43% /°C

*Standard Test Conditions

Physical Specifications (mm)



I-V Curve Chart



Other Performance Data

Power Tolerance	Operating Temperature	Max Series Fuse Rating	NOCT*
0%, +5%	-40 °C to +85 °C	15A	45 °C

*Normal Operating Cell Temperature

www.GrapeSolar.com

For service or support call

1-541-349-9000

2635 W. 7th Place

Eugene, Oregon 97402, USA

Tel: 541.349.9000 Fax: 541.343.9000