

60" Pine Straw/Debris Rake

OWNER'S MANUAL



WARNING:

Carefully read and understand all **ASSEMBLY AND OPERATION INSTRUCTIONS** before operating. Failure to follow the safety rules and other basic safety precautions may result in serious personal injury.

MODEL # YTF-60PSR

Thank you very much for choosing this product! For future reference, please complete the owner's record below:

Model: YTF-60PSR Purchase Date: _____

Save the receipt, the warranty, and these instructions. It is important that you read the entire manual to become familiar with this product before you begin using it.

This product is designed for certain applications only. The manufacturer cannot be responsible for issues arising from modification. We strongly recommend that this product not be modified and/or used for any application other than that for which it was designed. If you have any questions relative to a particular application, DO NOT use the product until you have first contacted us to determine if it can, or should, be performed on the product.

For technical questions, please call **1-218-943-6296**.

TECHNICAL SPECIFICATIONS

Item	Description
Coverage	60" working width
Single Tine Qty.	22
Tine Section Qty.	2
Tires	12" pneumatic wheels

IMPORTANT SAFETY INFORMATION



WARNING: Read and understand all instructions. Failure to follow all instructions listed below may result in serious injury.



CAUTION: Do not allow persons to operate or assemble this Pine Straw/Debris Rake until they have read this manual and have developed a thorough understanding of how it works.



WARNING: The warnings, cautions, and instructions discussed in this instruction manual cannot cover all possible conditions or situations that could occur. It must be understood by the operator that common sense and caution are factors that cannot be built into this product, but must be supplied by the operator.



WARNING: Do not exceed 30 PSI in each wheel.

SAVE THESE INSTRUCTIONS

WORK AREA

- **Keep work area clean**, free of clutter, and well-lit. Cluttered and dark work areas can cause accidents.
- **Keep children and bystanders** away while operating the Pine Straw/Debris Rake. Distractions can cause you to lose control, so visitors should remain at a safe distance from the work area.
- **Be alert of your surroundings.** Using a Pine Straw/Debris Rake in confined work areas may put you dangerously close to sharp tools and rotating parts.

PERSONAL SAFETY

- **Stay alert**, watch what you are doing, and use common sense when using a Pine Straw/Debris Rake. Do not use while you are tired or under the influence of drugs, alcohol, or medication. A moment of inattention while operating a Pine Straw/Debris Rake may result in serious personal injury.
- **Dress properly.** Do not wear loose clothing, dangling objects, or jewelry. Keep your hair, clothing, and gloves away from moving parts. Loose clothes, jewelry, or long hair can be caught in moving parts.
- **Use safety apparel and equipment.** Use safety goggles or safety glasses with side shields that comply with current national standards or, when needed, a face shield. Use a dust mask if working in dusty work conditions. This applies to all persons in the work area. Also use non-skid, safety shoes, hard hat, gloves, dust collections systems, and hearing protecting when appropriate.
- **Do not have passengers** on the tow vehicle when pulling the Pine Straw/Debris Rake.
- **Do not turn too short when pulling the Pine Straw/Debris Rake.** Turning too short can result in the Pine Straw/Debris Rake catching a tire and possibly injuring the operator.

PINE STRAW/DEBRIS RAKE USE AND CARE

- **Do not modify the Pine Straw/Debris Rake in any way.** Unauthorized modification may impair the function and/or safety and could affect the life of the equipment. There are specific applications for which the Pine Straw/Debris Rake was designed.
- **Always check for damaged or worn-out parts before using the Pine Straw/Debris Rake.** Broken parts will affect Pine Straw/Debris Rake operation. Replace or repair damaged or worn parts immediately.
- **Store idle Pine Straw/Debris Rake.** When the Pine Straw/Debris Rake is not in use, store it in a secure place out of the reach of children. Inspect it for good working condition prior to storage and before re-use.
- **Exercise extreme caution when changing direction on slopes.** Do not operate across slopes. Use up and down only. Do not attempt to operate on steep slopes.
- **Beware of hidden, underground objects.** Contact with hidden objects might cause a sudden stop of the towing vehicle and damage to the Pine Straw/Debris Rake.
- **Do not operate the vehicle at speeds higher than 10 mph** and use care when backing up.
- **Do not load or unload the tow vehicle** with the Pine Straw/Debris Rake attached to the towing vehicle.

ASSEMBLY

Step #1:

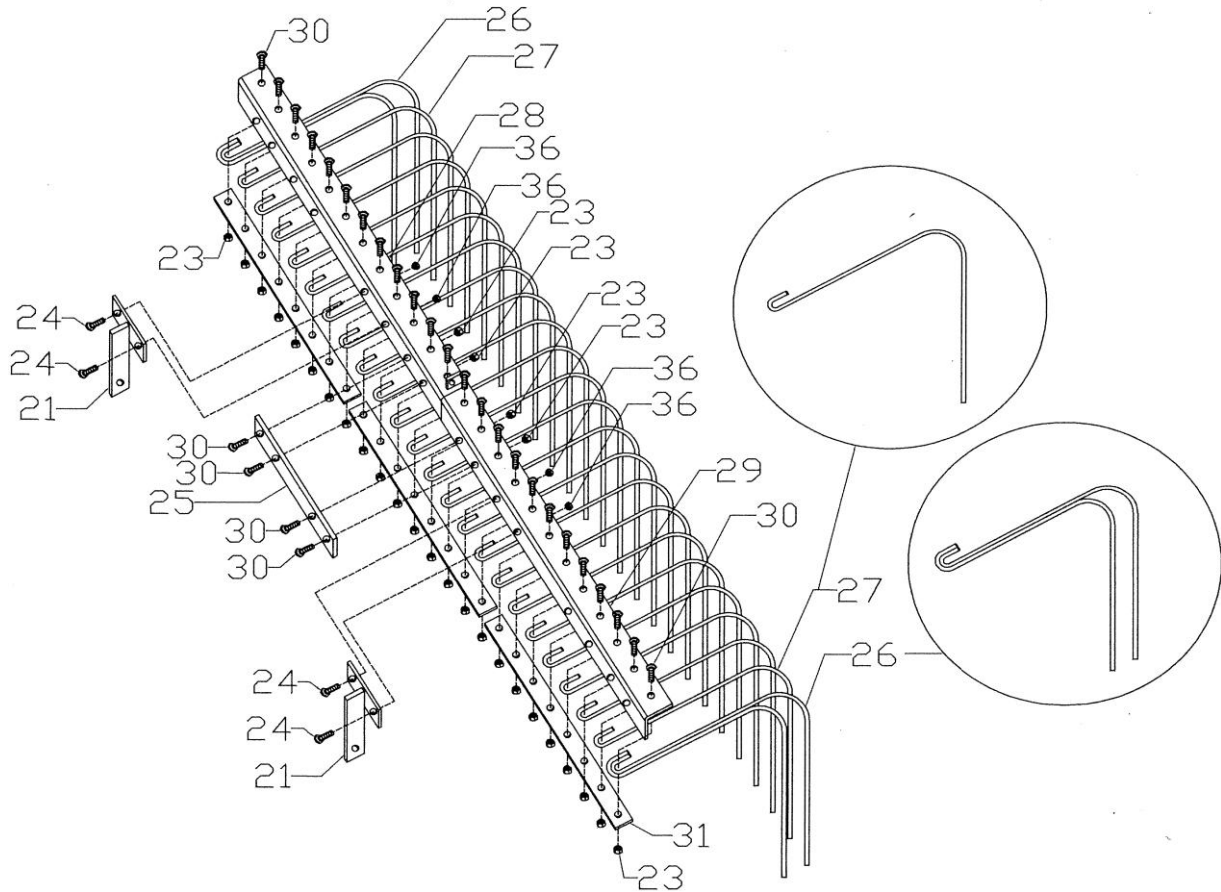
Assemble the Connection Plate (#25), the Right Angle Steel Section (with chain eyelet) (#28) and the Left Angle Steel Section (#29) using four 1/2" x 1-1/2" Hex Bolts (#30) and four 1/2" Smaller Nylon Nuts (#36).

Step #2:

Assemble the twenty-two Single Tines (#27) and the two Tine Sections (#26) to the Right Angle Steel Section (#28) and the Left Angle Steel Section (#29) using twenty-four 1/2" x 1-1/2" Hex Bolts (#30), three pressure plates (#31), and twenty-four 1/2" Nylon Nuts (#23).

Step #3:

Assemble the two Tine Assembly Mounting Brackets (#21) to the Right Angle Steel Section (#28) and Left Angle Steel Section (#29) using four 1/2" x 1" Hex Bolts (#24) and four 1/2" Nylon Nuts (#23).



Step #4:

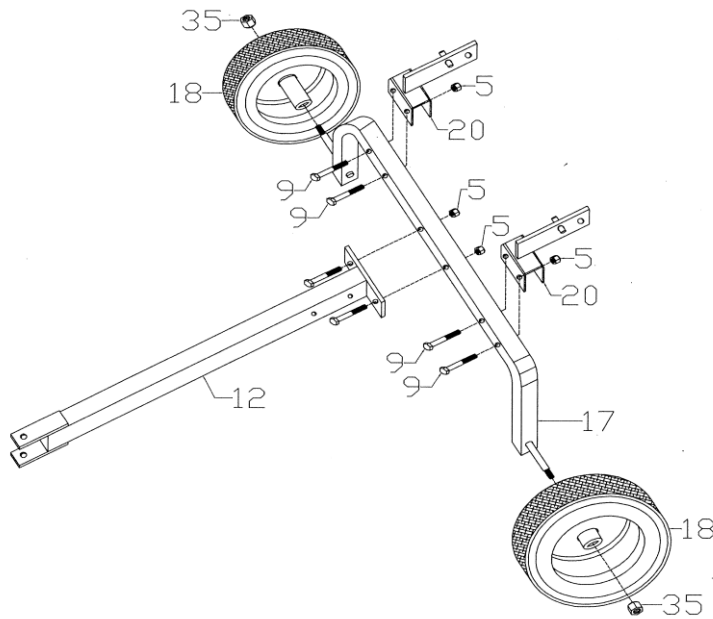
Assemble the Tongue (#12) to the Axle Frame (#17) using two 3/8" x 2-1/2" Hex Bolts (#9) and two 3/8" Nylon Nuts (#5).

Step #5:

Assemble the two Axle Mounting Brackets (#20) to the Axle Frame (#17) using four Hex 3/8" x 2-1/2" Bolts (#9) and four 3/8" Nylon Nuts (#5). .

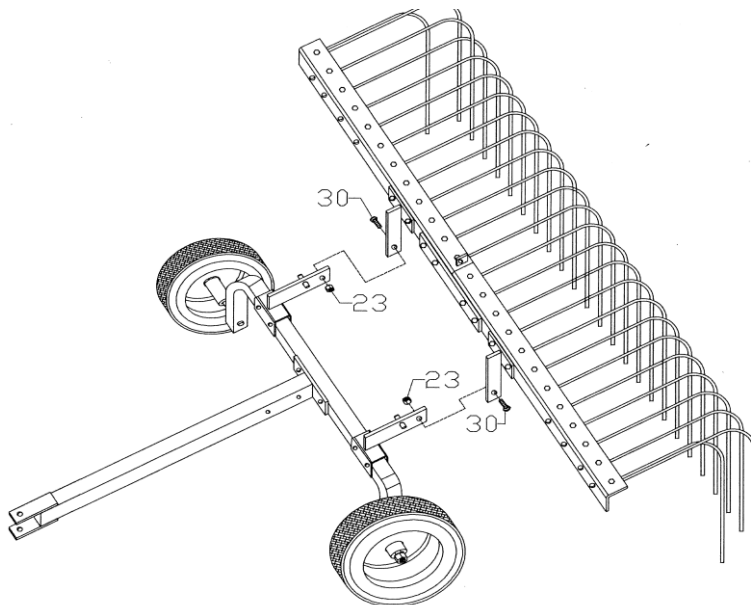
Step #6:

Attach the two Pneumatic Tires (#18) to Axle Frame (#17), and secure with two 9/16" Nylon Nuts(#35).



Step #7:

Connect the Spring Assembly to the Axle Assembly with two 1/2" x 1-1/2" Hex Bolts (#30) and two 1/2" Nylon Nuts. (#23).



Step #8:

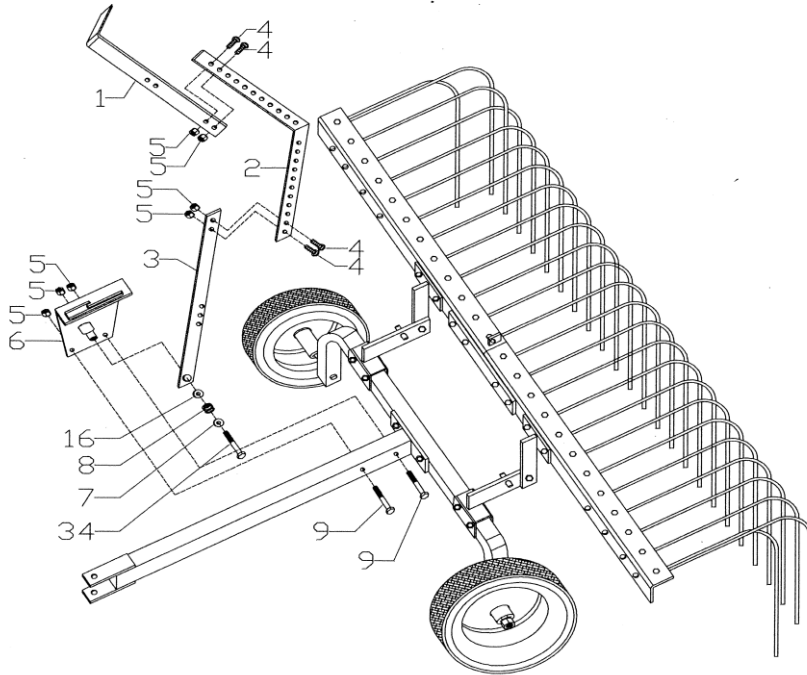
Assemble the Lift Handle Support (#6) to the Tongue (#12) using two 3/8" x 2-1/2" Hex Bolts (#9) and two 3/8" Hex Lock Nuts (#5).

Step #9:

Assemble the Lift Handle C (#3) to the Lift Handle Support (#6) using one 3/8" x 3" Hex Bolt (#34), one Big Washer (#7), one Spring (#8), one Washer (#16), and one 3/8" Nylon Nut (#5).

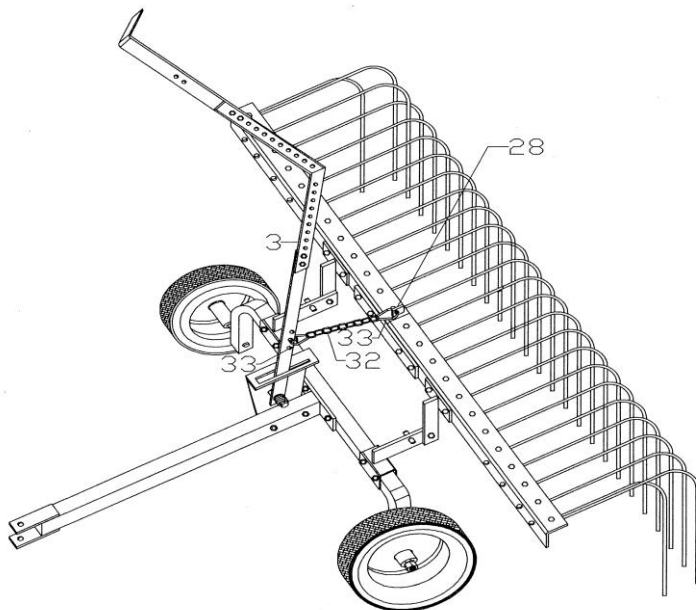
Step #10:

Attach the Lift Handle B (#2) and the Lift Handle A (#1) to the Lift Handle C (#3) using four 3/8" x 1" Hex Bolts (#4) and four 3/8" Nylon Nuts (#5).



Step #11:

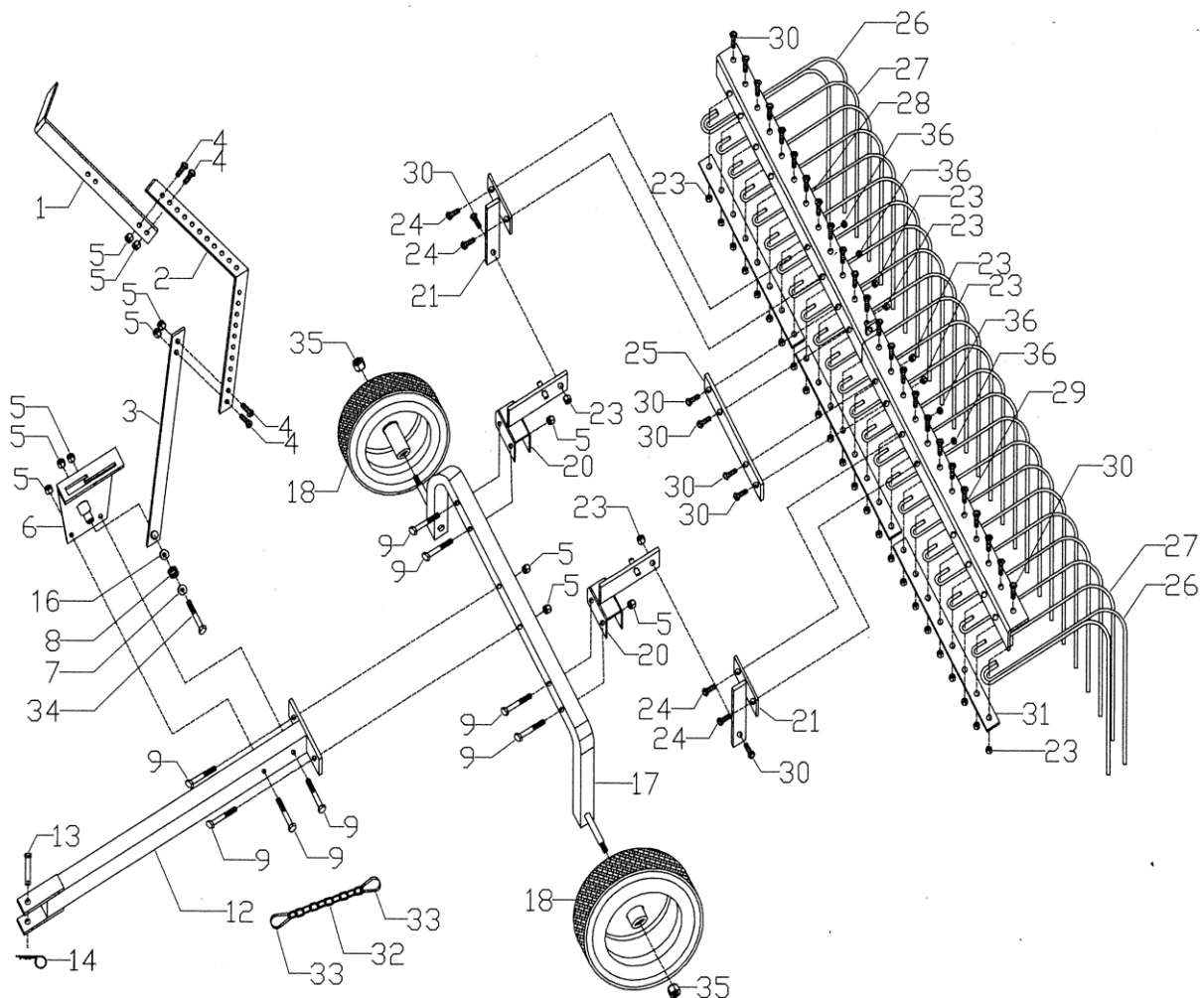
Attach the Chain (#32) to the Lift Handle and to the Tine Assembly using the Chain Clip A (#33) to Lift Handle C (#3) and Chain Clip B to the chain eyelet on the Right Angle Steel Section. The height of the tines can be adjusted by putting the Lift Handle in different positions.



MAINTENANCE

- **Maintain your Pine Straw/Debris Rake.** It is recommended that the general condition of any Pine Straw/Debris Rake be examined before it is used. Keep your Pine Straw/Debris Rake in good repair by adopting a program of conscientious repair and maintenance. If any abnormal vibrations or noise occurs, have the problem corrected before further use. Have necessary repairs made by qualified service personnel.
- **Do not exceed 30 PSI in each wheel.**

PARTS DIAGRAM



PARTS LIST:

Part #	Description	Qty.	Part #	Description	Qty.
1	Lift Handle A	1	21	Tine Assembly Mounting Bracket	2
2	Lift Handle B	1	23	Nylon Nut 1/2"	30
3	Lift Handle C	1	24	Hex Bolt 1/2" x 1"	4
4	Hex Bolt 3/8" x 1"	4	25	Connection Plate	1
5	Nylon Nut 3/8"	13	26	Tine Section	2
6	Lift Handle Support	1	27	Single Tine	22
7	Washer 1/2"	1	28	Right Angle Steel Section (with chain eyelet)	1
8	Spring $\Phi 36.5 \times \Phi 19.5 \times 28\text{mm}$	1	29	Left Angle Steel Section	1
9	Hex Bolt 3/8" x 2-1/2"	8	30	Hex Bolt 1/2" x 1-1/2"	30
12	Tongue	1	31	Pressure plate	3
13	Hitch Pin 1/2" x 2-1/2"	1	32	Chain	1
14	Hair Cotter Pin 1/8"	1	33	Chain Clip	2
16	Washer 3/4"	1	34	Hex Bolt 3/8" x 3"	1
17	Axle Frame	1	35	Nylon Nut 9/16"	2
18	12" Pneumatic Tire	2	36	Nylon Nut 1/2" Smaller	4
20	Axle Mounting Bracket	2			

For technical questions, please call **1-218-943-6296**.

WARRANTY

One-year limited parts warranty.



TG
PO BOX 203
Miltona, MN 56354
Made in Taiwan