



# Replacement Blade Kit

## TimeCutter® Riding Mower with 42in Mower

Model No. 137-1999-03P

### Installation Instructions

#### ▲ WARNING

#### CALIFORNIA Proposition 65 Warning

This product contains a chemical or chemicals known to the State of California to cause cancer, birth defects, or reproductive harm.

## Installation

### Loose Parts

Use the chart below to verify that all parts have been shipped.

Description	Qty.	Use
No parts required	–	Remove the blades.
Blades	2	Install the blades.

## Removing the Blades

1. Disengage the blade-control switch (PTO).
2. Shut off the engine, wait for all moving parts to stop, and remove the key before leaving the operating position.
3. To access the blades, do one of the following steps:
  - Raise the mower deck to the highest position and raise the front of the machine and support it with jack stands.

**Note:** Do not rely solely on mechanical or hydraulic jacks for support. Use adequate jack stands or equivalent support.

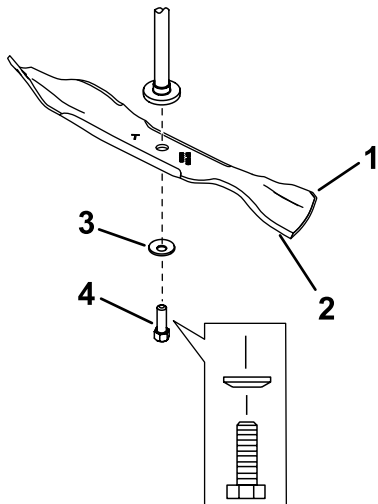
  - Remove the mower deck as described in the *Operator's Manual* for the machine.
4. Hold the blade end using a rag or thickly-padded glove. Remove the blade bolt, curved washer, and blade from the spindle shaft ([Figure 1](#)).



# Installing the Blades

1. Install the blade onto the spindle shaft ([Figure 1](#)).

**Important:** The sail area (curved part) of the blade must point upward toward the inside of the mower deck to ensure proper cutting.



g237146

**Figure 1**

- |                       |                  |
|-----------------------|------------------|
| 1. Sail area of blade | 3. Curved washer |
| 2. Blade              | 4. Blade bolt    |

- 
2. Install the curved washer (cupped side toward the blade) and the blade bolt ([Figure 1](#)).
  3. Torque the blade bolt to 47-88 N·m (35-65 ft-lb).