



# ASSEMBLY INSTRUCTIONS FOR REPLACEMENT FILTERS

AVAILABLE PACK SIZE: 1, 2, 4, 8, 12  
Fits All ZeroWater Pitchers and Dispensers

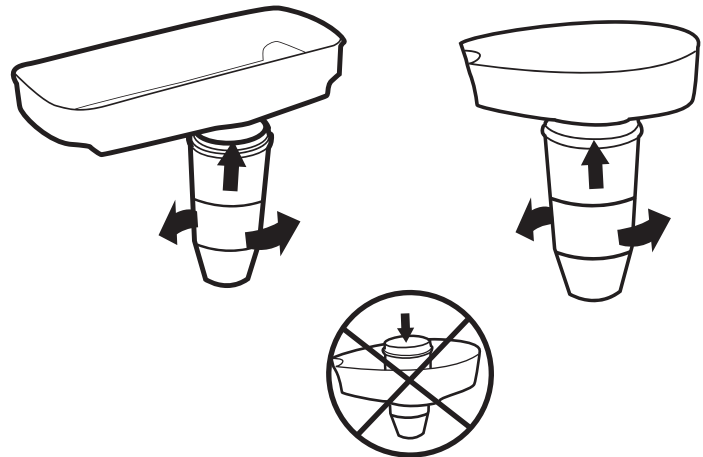


## 1 UNWRAP FILTER

Remove and discard blue cap.



**2 TWIST** filter into the bottom of reservoir (from below) and tighten filter to obtain a complete seal with the reservoir. ***Do not drop the filter in from above.*** Tighten until there is a complete seal between the filter, o-ring and reservoir.



***You do not need to presoak or flush your filter with tap water, you can use the filter immediately.***

ZeroWater recommends changing your filter when your water quality meter, included with every ZeroWater pitcher and dispenser, reads **006 or higher**.

Have additional questions about your filter or product?  
Check out the FAQ section at [zerowater.com/faqs.php](http://zerowater.com/faqs.php)

Do not use with water that is microbiologically unsafe or of unknown quality without adequate disinfection before or after the system

For additional assistance or comments please contact customer service at **1.800.503.2939, Mon-Fri 8am – 8pm CT.**