



Deluxe Steel Folding Scooter & Wheelchair Carrier

Instructions for Part # SC500-V3

General Guidelines

- It is the user's responsibility to read and follow all instructions.
- Keep these instructions with the product at all times and review before each use.
- It is the responsibility of this product's owner to furnish the instructions to any person that borrows or purchases the product.
- Inspect the product before use to ensure it is assembled properly and all parts are in safe working order and free of defects.
- Never modify this product in any way.
- All circumstances cannot be addressed in these instructions. Please use common sense and practice general safety measures when using this product.
- Parts and/or instructions are subject to change without notice.

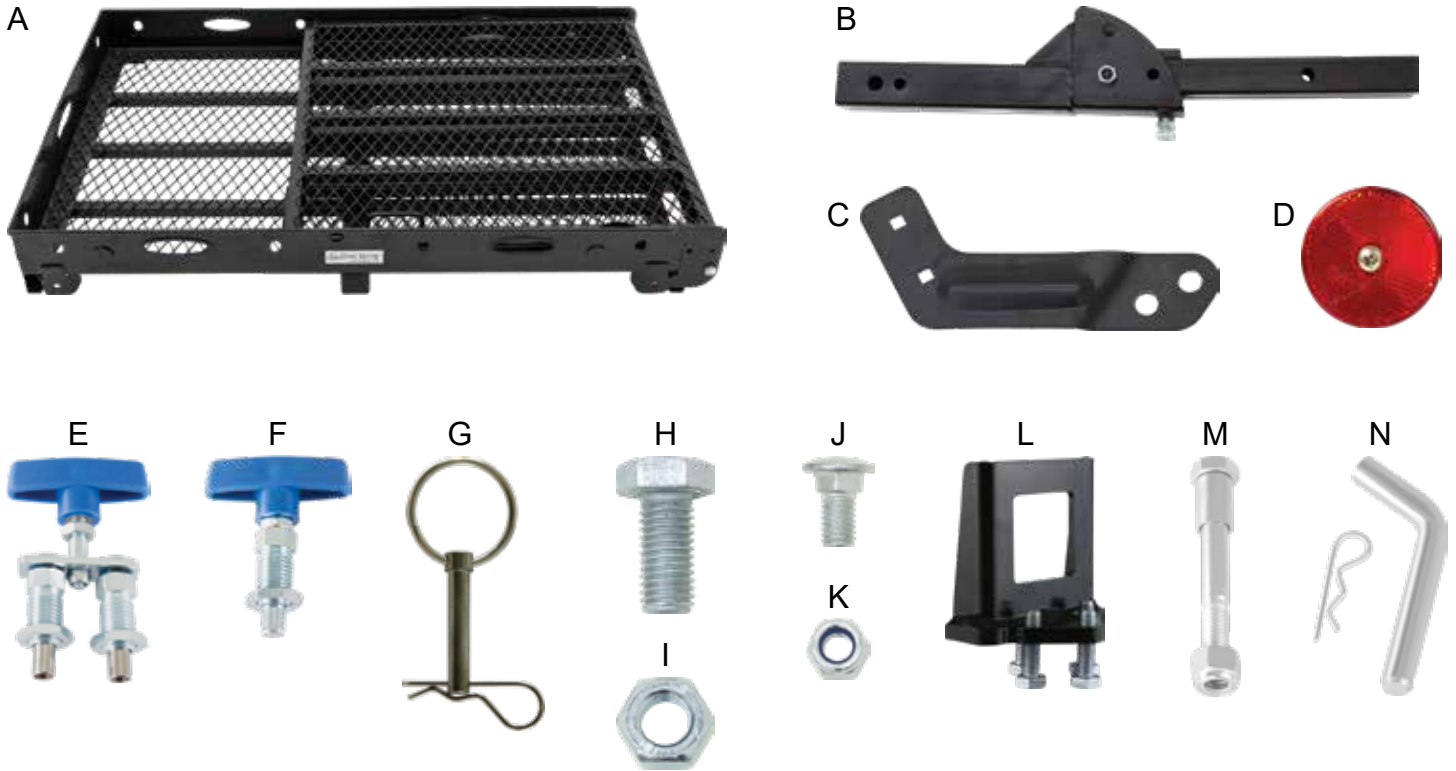
Safety

- Follow all warnings and instructions marked on the product.
- Do not occupy the mobility aid while loading the carrier.
- Do not stand on the carrier.
- Never exceed vehicle tongue weight rating.
- Do not exceed the 500 lb carrying capacity.
- Hitch adapters may affect the weight capacity of the carrier. If using a hitch adapter, always check its limitations before use.
- Always store the carrier in a safe place.
- Improper use, storage, or installation of the carrier could result in death or serious injury.
- Do not put the product on any kind of trailer.
- NOT recommended for tow-behind trailers including 5th wheel trailers and camping trailers.
- Periodically check nuts and bolts for tightness.

Tools Required

- | | |
|-----------------------|--------------------------------|
| • 17mm wrench | • 7/8" or 22mm wrench |
| • 13mm or 1/2" wrench | • Phillips screwdriver |
| • 19mm or 3/4" wrench | • 10mm Allen wrench (included) |

Parts



Part	Description	Quantity
A	Basket and Ramp Assembly	1
B	Hitch Tube Assembly	1
C	Ramp Bracket	1
D	Reflector with Mounting Screw	2
E	Double Spring Pull Pin with Handle	1
F	Single Spring Pull Pin with Handle	1
G	12mm Pin with Clip	2

Part	Description	Quantity
H	M14x2.0x30 Bolt	2
I	M14x2.0 Nut	2
J	M8x1.0x16 Carriage Bolt	2
K	M8x1.0 Lock Nut	2
L	Anti-Tilt Locking Device	1
M	Pinch Bolt Assembly - M12x1.5x99 Bolt	1
N	Hitch Pin Set	1

Assembly

Step 1. Install the spring pull pin (F) into the front of the carrier basket (A). Allow the spring pull pin to partially cover the edge of the ramp.

Adjust the spring pull pin with enough room that when pulled back, the ramp can be lifted out of the carrier basket. Securely tighten jam nut.

Fig. 1a

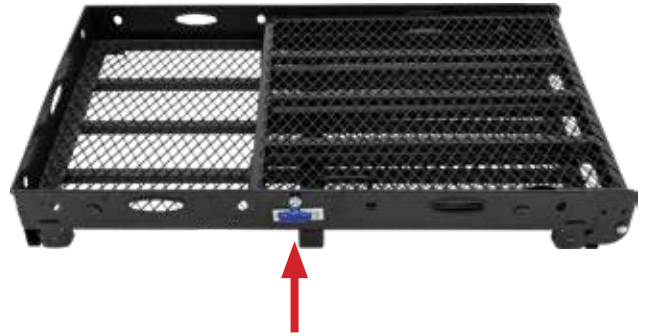


Fig. 1b

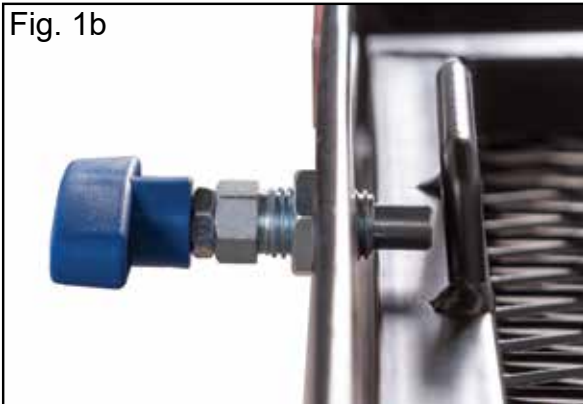


Fig. 1c



Step 2. Flip the carrier basket assembly upside down and slide the hitch tube assembly into the center support tube. Align the holes and insert a pin with clip (G). Install two bolts (H) with nuts (I) and tighten until seated using a 7/8" wrench. Do not over-tighten.

Note: To properly tighten the bolts (H) with jam nuts (I), first thread the jam nut counterclockwise up to the head of the bolt. Fully tighten the bolt into the carrier tube. Then tighten the jam nut clockwise against the carrier tube to secure the bolt.

Fig. 2a



Fig. 2b



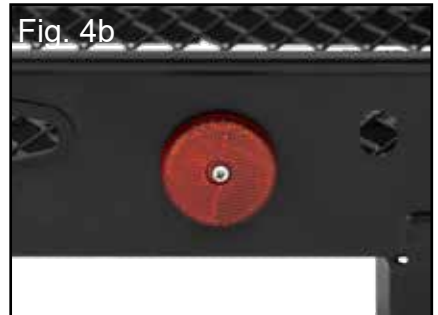
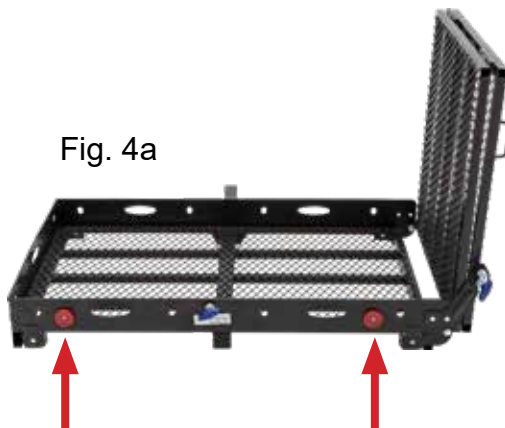
Step 3. Flip the carrier right side up and install the ramp bracket (C) using the carriage bolts (J) and lock nuts (K) using a 13mm or 1/2" wrench. Be sure the square shoulders on the carriage bolts seat fully in the square holes on the carrier.

Note: Fully tighten the carriage bolts only after the ramp is in the upright position and the spring pins are locked into place. This will align the pins with the holes in the ramp as there is some play in the bracket that could cause misalignment if this procedure is not followed.



Step 4. Install the reflectors using a Phillips screwdriver.

Fig. 4a



Step 5. Slide the anti-tilt locking device (L) onto the carrier hitch tube with the 3-bolt side facing the hitch.



Fig. 5

Installation

It is required to install either the included anti-tilt locking device or pinch bolt.

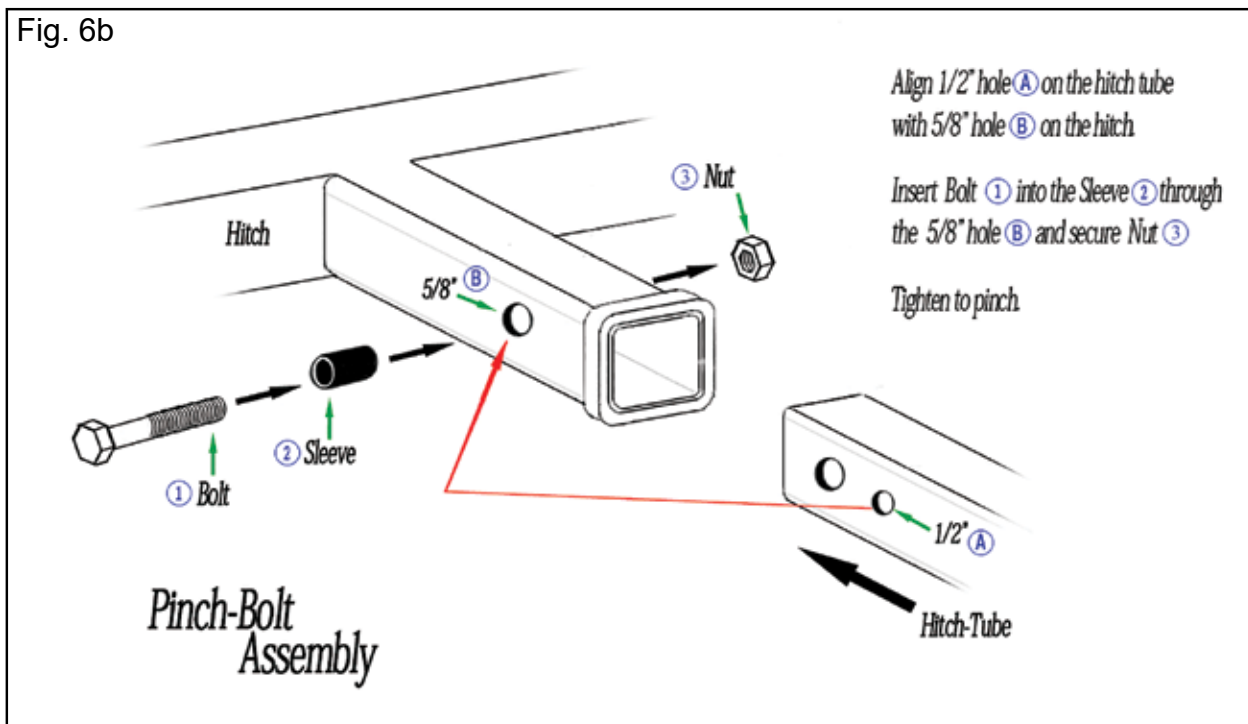
Step 6a. Anti-Tilt - Preferred Option:

Slide the anti-tilt locking device (L) tight up against the hitch receiver. Insert a hitch pin (N) or pinch bolt (M) and tighten the bolts using a 17mm wrench.

When tightening the bolts, tighten one side first until the rack is level, then tighten the other bolts.



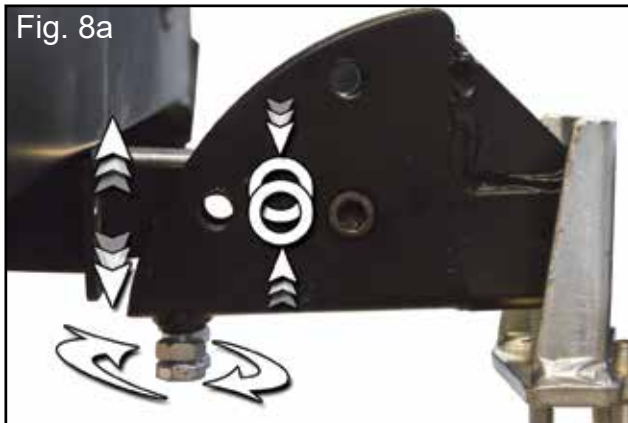
Step 6b. Pinch Bolt - 2nd Option: Insert the carrier into the hitch and install the pinch bolt assembly.



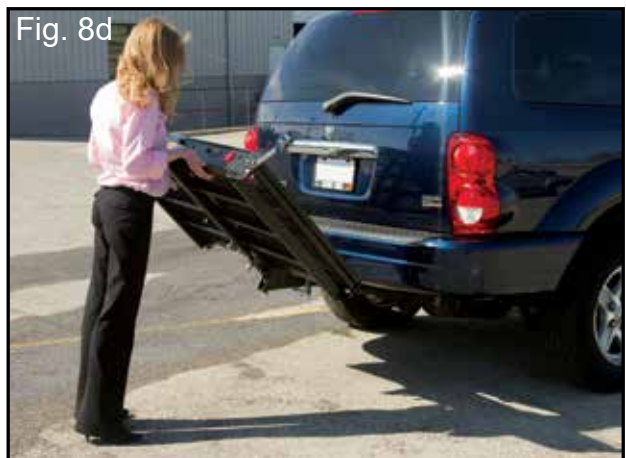
Step 7. Securely tighten the hex head pivot bolt on the hitch tube assembly with a 10mm Allen wrench to eliminate side-to-side wobble of the hitch carrier. If the bolt is not properly tightened, it may cause the carrier to not be level.



Step 8. Adjust the leveler bolt to align the pin holes. The pin with clip (G) should be able to be removed/installed without binding if properly adjusted. Tighten the jam nuts when properly aligned using a 17mm or 11/16" wrench.



Remove the pin with clip (G) to fold the carrier vertically. Replace the pin in the top pin hole to secure the carrier in the vertical position.



Step 9. To unfold the loading ramp, pull the spring pull pin (F) on the carrier basket and lift the ramp up. Next, pull the ramp bracket spring pull pin (E) to allow the ramp to pass. Finally, lay the loading ramp flat on the ground and load wheeled cargo. After the cargo has been loaded, store the ramp in the vertical position. To store in the vertical position, lift the ramp back up and secure using the ramp bracket spring pull pins. Safely secure all cargo with high quality tie downs.

Fig. 9a



Fig. 9b



Fig. 9c



Fig. 9d



Product Warranty and Liability

GENERAL PRODUCT WARRANTY: Products purchased from the Authorized Dealer (original place of purchase) or Merchant ("Dealer") will be free of defects in material and workmanship at the time of receipt, and will meet the specifications stated at the place of purchase transaction or online at the Dealer's website, under normal use and service when correctly installed, operated and maintained. This product warranty is effective for the period of time stated below, unless otherwise stated in the product instructions or depicted in the product advertisement. **All Authorized Dealer warranties are NON-TRANSFERABLE** and cover only the original end purchaser. This limited warranty does not cover products purchased through non-authorized dealers. Non-authorized dealer receipts are not accepted for warranty verification.

*****Warranty claims must be made directly to the original place of purchase.*****

WARRANTY PERIOD: This warranty remains in force for one year from the date of the product's accepted delivery. The Authorized Dealer offers a one year manufacturer's warranty for most products unless otherwise specified on the product advertisement.

WARRANTY SERVICE: The Authorized Dealer will replace any defective or malfunctioning part at no charge, including payment of the shipping costs of parts or replacement product to and from the manufacturer. The purchaser is responsible for labor charges. If the product does not meet specifications as depicted in the advertisement, the Authorized Dealer will refund the full purchase price of the product.

Questions regarding the warranty on a specific product and warranty claims should be directed to the Authorized Dealer with whom the purchase transaction was made.

WARRANTY LIMITATIONS: The above warranty does not apply to products that are repaired, modified or altered by any party other than the Authorized Dealer; are subjected to unusual physical stress or conditions (such as overloaded ramps or corrosion), natural disaster, governmental actions, wars, strikes, labor disputes, riots, theft, vandalism, terrorism or any reason beyond reasonable control; are damaged due to improper installation, misuse, abuse, accident or negligence in use, storage, transportation or handling, or tampering; or to products that are considered consumable items or items requiring repair or replacement due to normal wear and tear.

Product should be inspected prior to signing for delivery. Product damage incurred during shipping, unless noted on the Bill of Lading at the time of delivery, renders this warranty void.

LIMITED LIABILITY: In no event shall THE AUTHORIZED DEALER be liable to the purchaser or any third party for any indirect, incidental, consequential, special, exemplary or punitive damages arising out of the use of the product, including, without limitation, property damage, loss of value of the product or any third party products that are used in or with the product, or loss of use of the product or any third party products that are used in or with the product.

