

3D-GUIDED INTERACTIVE ASSEMBLY
INSTRUCTIONS CAN BE FOUND IN **BILT®**
DOWNLOAD THE FREE APP



1-877-527-0313
HOMEACCENTSHOLIDAY.COM

Hardware List		
Locator	Name	Qty.
I	Spare Fuse	4
J	Spare Bulb	8
K	Anchoring String	4
L	Ground Stake	8
M	Bolt & WingNut	4
N	Plastic Tie	20

USE AND CARE GUIDE

PLANNING ASSEMBLY

***Assembly of this product may require more than one person.**

CAUTION: Grasp the plug to insert or remove from the power source. Do not unplug by pulling on cord.

CAUTION: The lighting string on this product is rated at 19.2 Watts (0.16 Amps). Do not overload. Do not connect to another lighting string, decorative outfit or other electrical products. Before you use or re-use this product inspect it carefully. Discard or return to place of purchase with purchase receipt if the product has cuts, damage, frayed wire insulation on cords, cracks in the socket enclosures, loose connections, exposed copper wire or other obvious damage.

- a. Carefully remove the product from wherever it is placed. This helps to avoid any undue strain or stress on the product connections and wires. If the product is placed somewhere other than the ground it should be well secured and flat.
- b. Carefully disassemble the unit taking caution not to cut any electrical wires.
- c. Wipe the unit with a damp cloth and allow the unit to dry before storing.
- d. Store the product neatly in a cool, dry location protected from sunlight.

- a. Ensure that the floor or surface that the item sits on is flat and level
- b. Be sure to plug the item correctly to a wall outlet or a UL Listed Power Cord
- c. Ensure all parts are assembled properly per the Instruction Manual
- d. If the item does not light check for loose or broken bulbs and connections
- e. Do not plug into other electrical items
- f. If the item has multiple Light String Cords be sure to plug in all cords
- g. Check for Broken or Burned Out Fuse In Plug

What is Covered

The product is intended for residential seasonal use for 90 days per year. This product is covered by a 90 days limited guarantee due to defects in material and workmanship. Return the product with purchase receipts to the location of purchase for refund within 90 days of purchase.

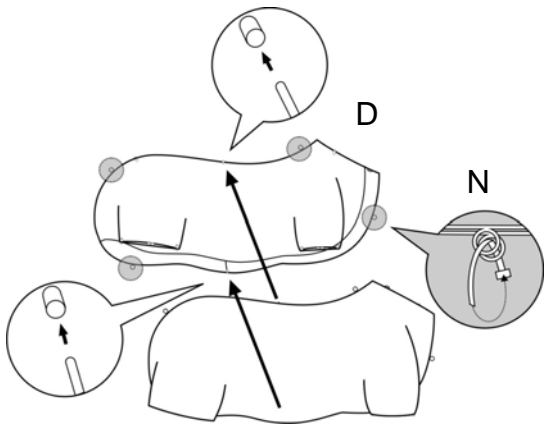
What is Not Covered

This warranty does not cover commercial use, normal wear and tear, products not used in accordance with directions provided on or with the product, burn out of bulbs or LEDS, batteries, products that have been subjected to unauthorized repair and/or modification and damage caused by shipping and improper handling, alterations, misuse, in store display models or accidents. Questions, problems, missing parts? Before returning to the store, call Home Accents Holiday Customer Service 8 a.m.-6 p.m., EST, Monday-Friday

ASSEMBLY

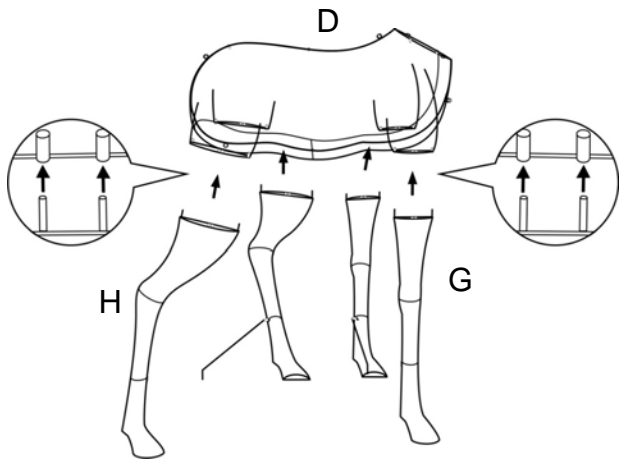
1 Assembling the Body

Align the two Halves of Body (D) with each other then insert the connecting rods on one half into the connecting holes on the other half then fasten together at the connecting loops with the Plastic Ties (N).



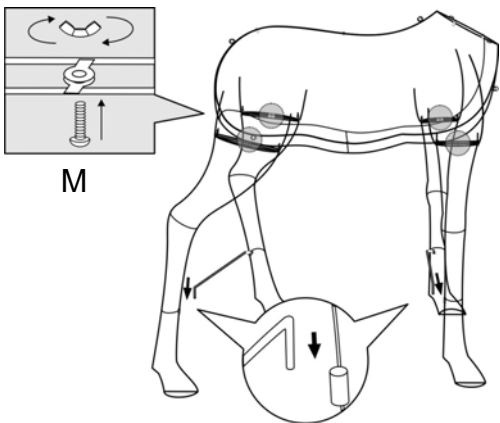
2 Assembling the Legs to the Body

Insert the metal connecting rods attached to the each Leg (G,H) into the matching connecting holes on the underside of the Body (D).



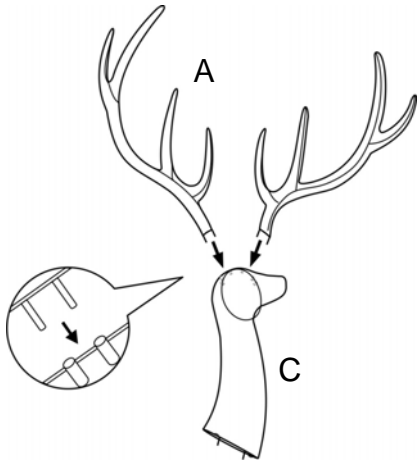
3 Securing the Legs to the Body

Secure the Legs and Body together at the connecting loops with Bolt & WingNuts (M). The Legs come with metal bars attached to stabilize the Deer. Insert the hooked end of the metal bars into the metal hole on the opposite Leg.



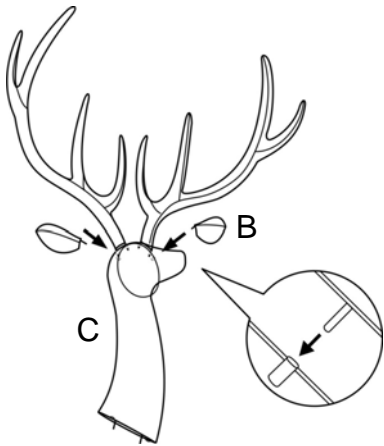
4 Assembling the Antlers to the Head/Neck

Insert the connecting rods on both Antlers (A) into the matching connecting holes at the top of Head/Neck (C).



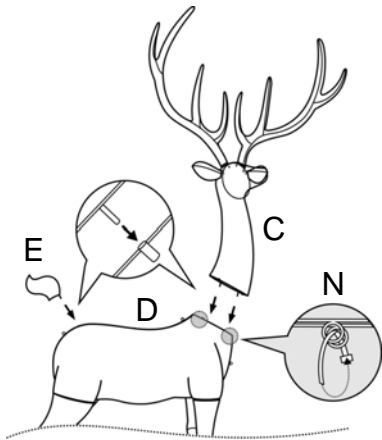
5 Assembling the Ears to the Head/Neck

Insert the connecting rods on both Ears (B) into the matching connecting holes at the top of Head (C). Note: The Ears are placed to the outside of the Antlers.



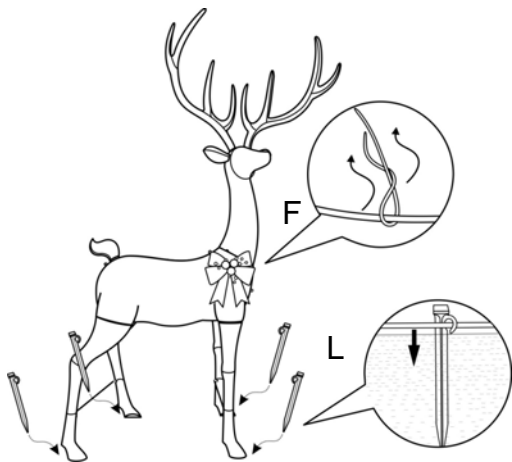
6 Assembling the Head/Neck and Tail to the Body

Insert the connecting rods on the Head/Neck and Tail (C,E) into the matching connecting holes on the Body (D) then fasten together at the connecting loops with the Plastic Ties (N).



7 Assembling the Bow Tie and Ground Stakes

The Bow Tie (F) comes with a wire tie on the back side. Feed the wire tie through the holes of the body then twist the wires together to secure. Place the Ground Stakes (L) over the metal frame at each hoof of the Deer then firmly into the ground.



8 Assembling the Anchoring Strings and Ground Stakes

Hook the plastic clipped end of each of Anchoring String (K) onto the metal loops on top of the Body; Attach the Ground Stakes (L) thru the looped free end of each Anchoring String (K) then tightly secure to the ground evenly away from the Deer as shown below.

